

Date Sun 12/03/2023

Job #

Weather

6:00 AM

30° 

Clear

Wind: 7 MPH | Precipitation: .0" | Humidity: 93%

12:00 PM

54° 

Clear

Wind: 14 MPH | Precipitation: .0" | Humidity: 45%

4:00 PM

61° 

Clear

Wind: 10 MPH | Precipitation: .0" | Humidity: 30%

Work Logs

Name	Description
Cavins Environmental	Cavins Group inspected all equipment and containments and changed all air scrubber filters. Humidity and temperature readings were checked on all three floors in the main area and one exterior reading.
Total	

General Notes

1. Exterior: Equipment On-site
2 - 20' Conex



2. Exterior: Humidity and Temperature

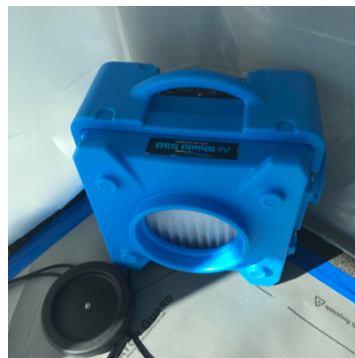


3. First Floor - 149 Storytime: Containment Upon Arrival/Departure

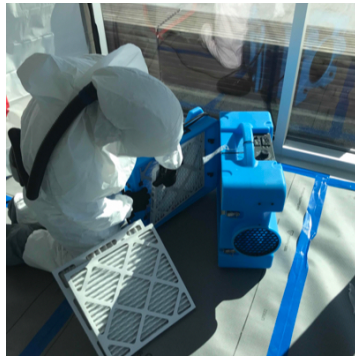


4. First Floor - 149 Storytime: Equipment On-site

- 2 - Air scrubbers
- 5 - Zip Posts



5. First Floor - 149 Storytime: Filter Change

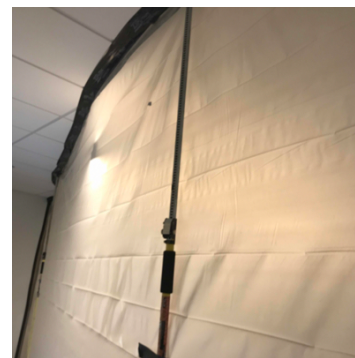


6. SO 201A: Containment Upon Arrival/Departure



7. SO 201A: Equipment On-site

- 7 - Zip Posts
- 2 - Air Scrubbers





8. SO 201A: Filter Change



9. 305 Pioneer: Filter Change



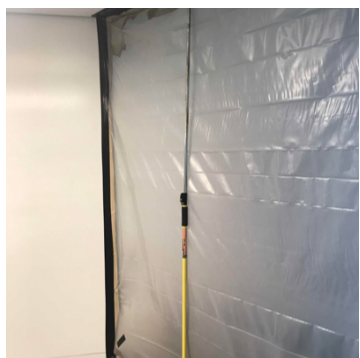
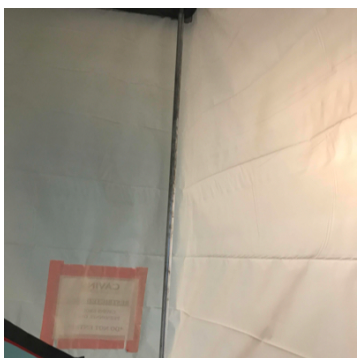
10. 305 Pioneer: Containment Upon Arrival/Departure



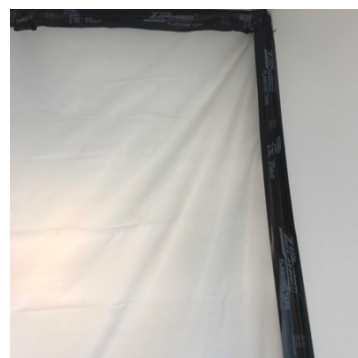
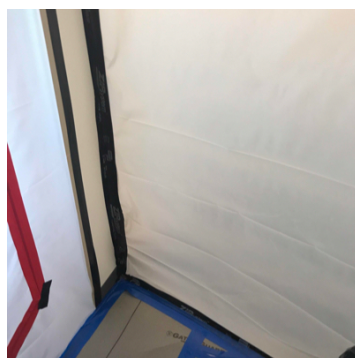


11. 305 Pioneer: Equipment On-site

- 4 - Zip Posts
- 2 - Air Scrubbers



12. 311 Local History: Containment Upon Arrival/Departure





13. 311 Local History: Equipment On-site

2 - Air Scrubbers



14. 311 - Local History: Filter Change

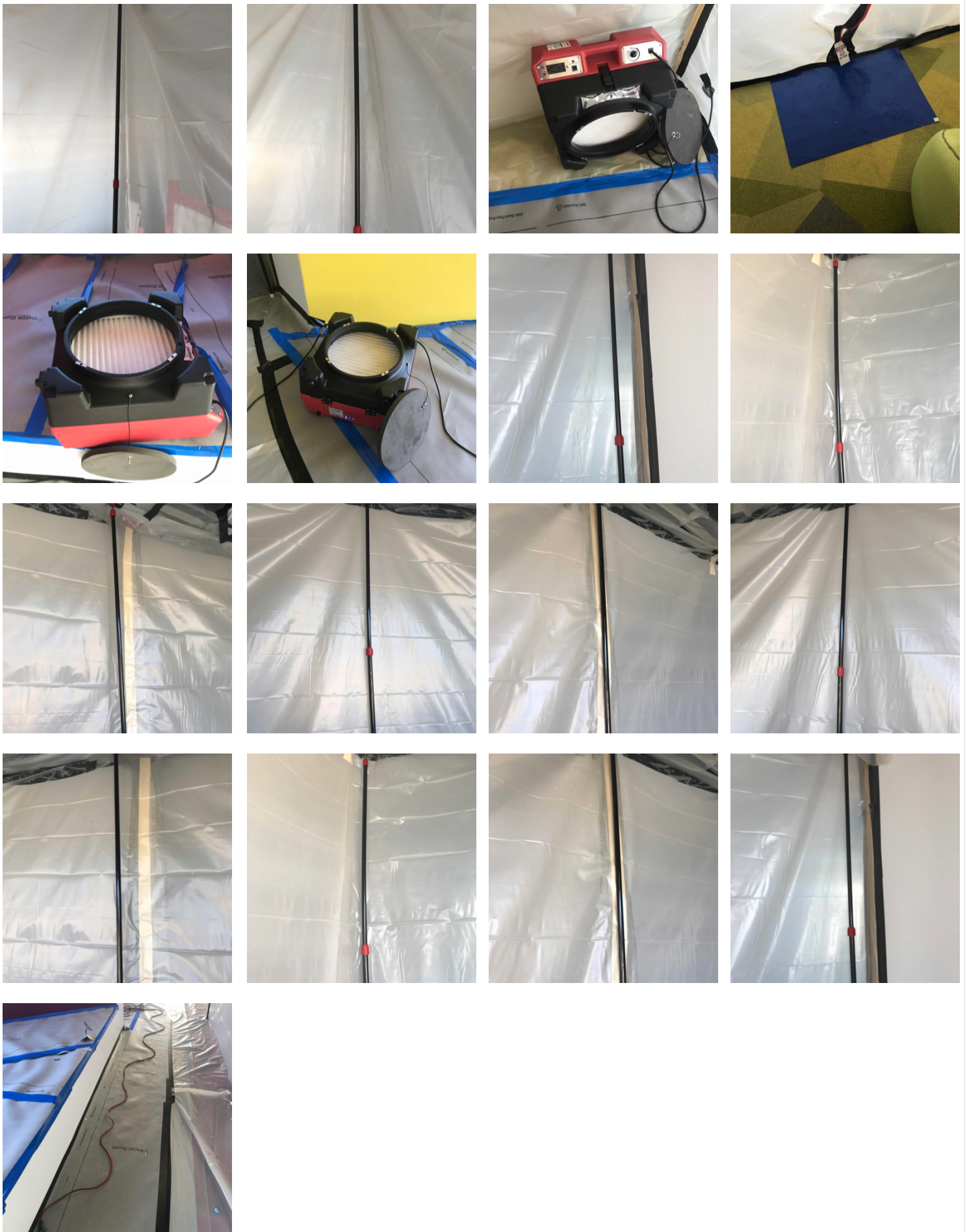


15. First Floor - Bay Windows (Children's Area): Containment Upon Arrival/Departure

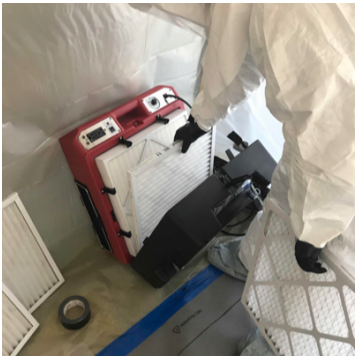


16. First Floor - Bay Windows (Children's Area): Equipment On-site

- 12 - Zip Posts
- 3 - Air Scrubbers
- 1 - 50' Extension Cord



17. First Floor - Bay Windows (Children's Area): Filter Change



18. Third Floor - Main Area - Equipment On-site

1 - Air Scrubber



19. Third Floor - Main Area: Filter Change



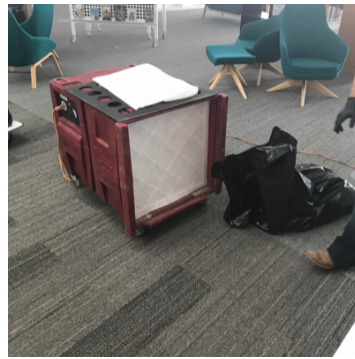
20. Third Floor - Main Area: Temperature and Humidity



21. Second Floor - Main Area: Temperature and Humidity



22. Second Floor - Main Area: Filter Change



23. Second Floor - Main Area: Equipment On-site

1 - Air Scrubber



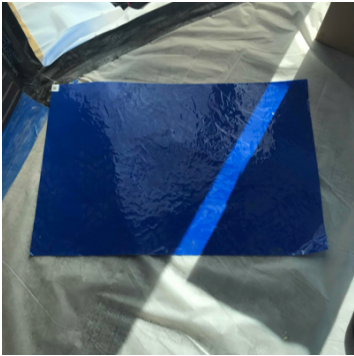
24. Second Floor - Southeast Corner: Containment Upon Arrival/Departure

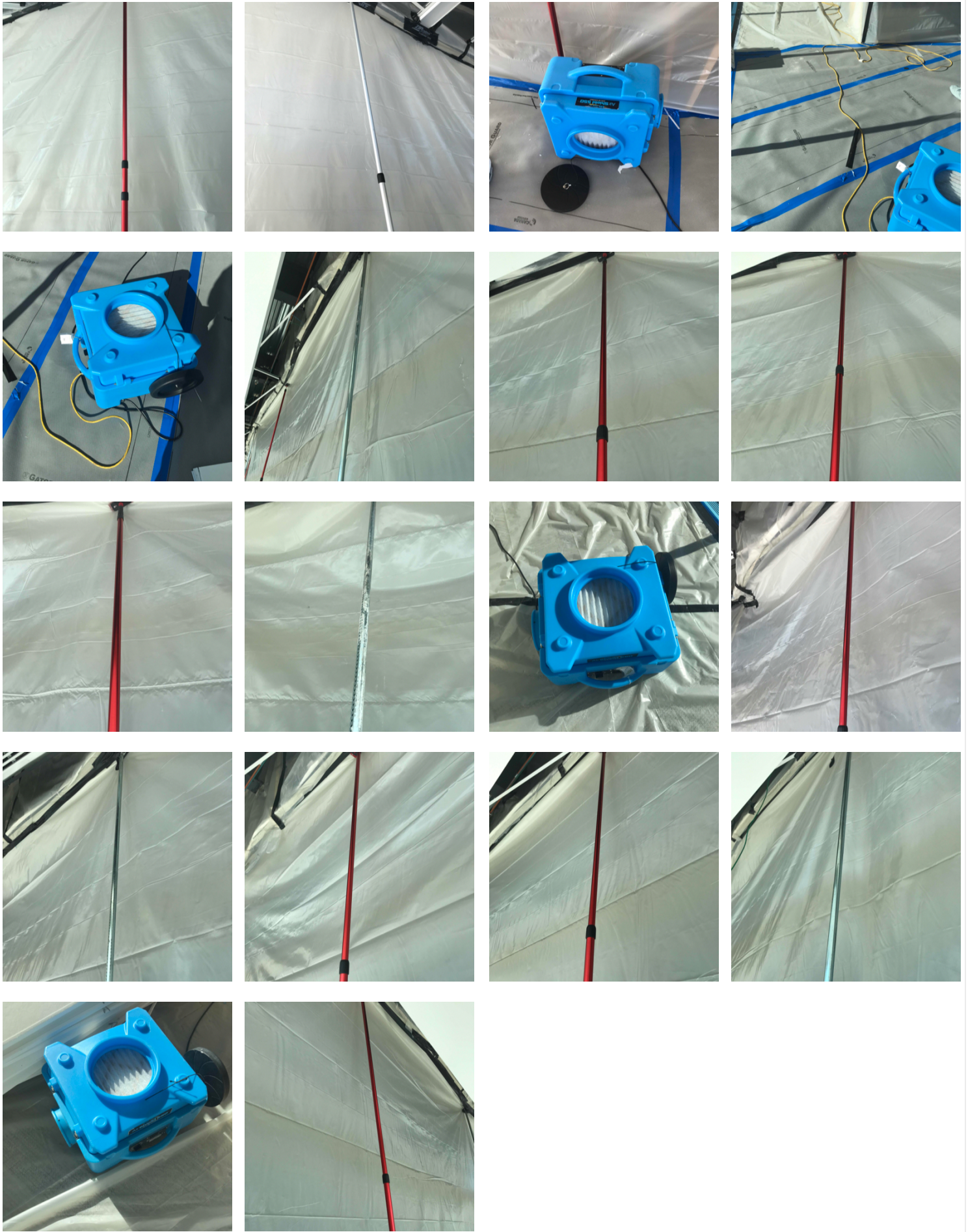




25. Second Floor - Southeast Corner: Equipment On-site

- 22 - Zip Posts
- 6 - Medium Air Scrubbers
- 1 - 25' yellow extension cord





26. Southwest Exit Stairwell: Equipment On-site

1 - Air Scrubber



27. Second Floor - Southeast Corner: Filter Change



28. First Floor - Main Area: Temperature and Humidity



29. First Floor - Main Area Equipment On-site

2 - Air Scrubbers



30. First Floor - Main Area: Filter Change



31. First Floor - Southwest Vestibule: Equipment On-site

- 2 - Air Scrubbers
- 2 - Zip Posts



32. First Floor - Southwest Vestibule: Containment Upon Arrival/ Departure



33. First Floor - Southwest Vestibule: Filter Change



34. Garage: Equipment On-site

- 4 - Air Scrubbers
- 2 - 50' Extension Cord
- 2 - 25' Extension Cords





35. Garage: Filter Change



36. Southwest Stairwell: Filter Change

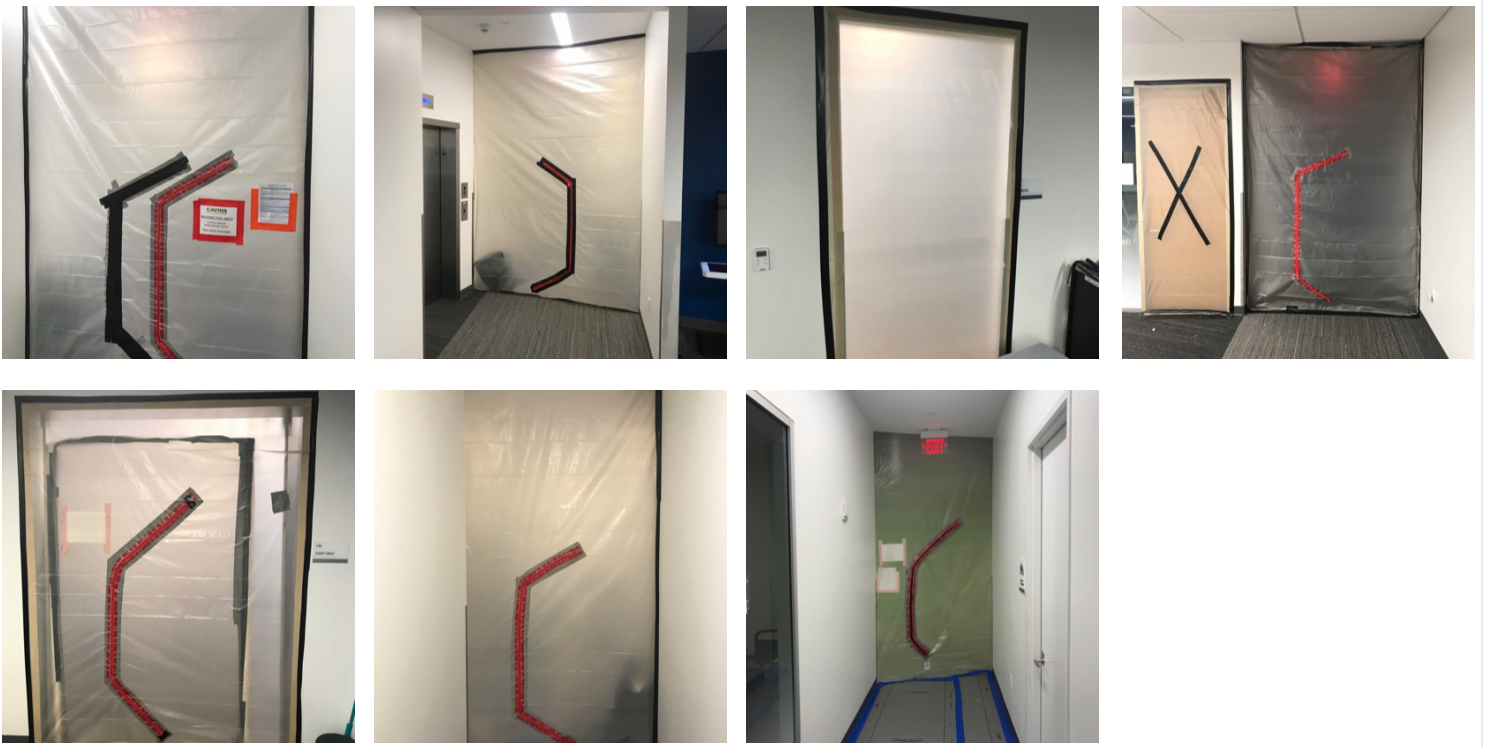


37. SO 115: Equipment On-site

3 - Air Scrubbers



38. SO 115 - Containment Upon Arrival/Departure - 12/3/23



39. SO 115: Filter Change



40. Overall Equipment On-site:

- 31 - Air Scrubbers
- 52 - Zip Posts
- 2 - 20' Conex Boxes
- 3 - 25' Extension Cords
- 3 - 50' Extension Cords