

Norman Public Library Central - Mold

103 W Acres St Norman, OK 73069



Date Sun 12/17/2023

Job #

Weather

6:00 AM

34° 

Clear

Wind: 6 MPH | Precipitation: .0" | Humidity: 83%

12:00 PM

56° 

Clear

Wind: 1 MPH | Precipitation: .0" | Humidity: 50%

4:00 PM

66° 

Clear

Wind: 3 MPH | Precipitation: .0" | Humidity: 32%

Work Logs

Name	Description
City of Norman Central Library - Mold	Cavins Group arrived on site and suited up in proper PPE. Upon suiting up, Cavins technicians checked all containments and equipment for defects. All air scrubber filters were changed, temperature and humidity readings were taken in all containments, all three floors in the main area, and one exterior reading.
Total	

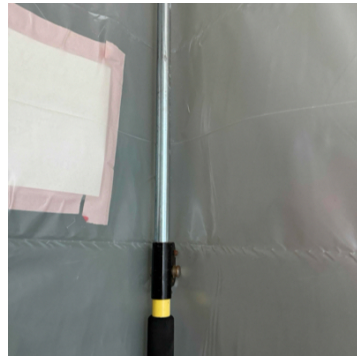
General Notes

1. 305 Pioneer: Containment Upon Arrival/Departure



2. 305 Pioneer: Equipment

4 - Zip Post



3. 303 Storage: Containment Upon Arrival/Departure

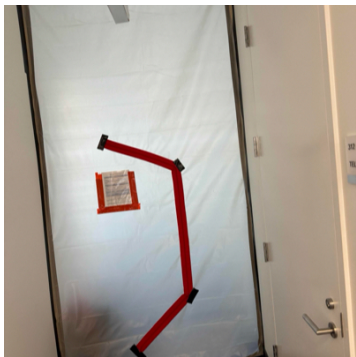


4. 303 Storage: Equipment

2 - Zip Post



5. 311 Local History: Containment Upon Arrival/Departure



6. 311 Local History: Temperature and Humidity

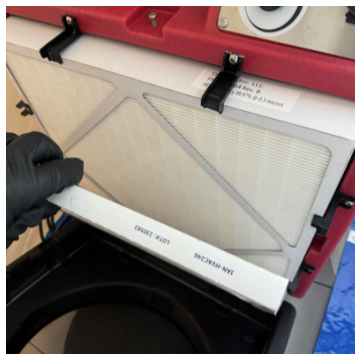
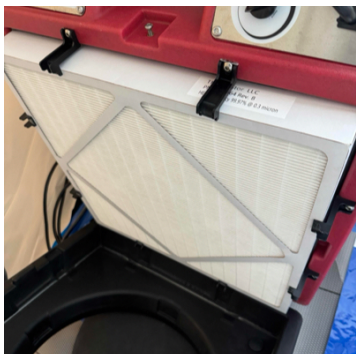


7. 311 Local History: Equipment

2 - Air Scrubbers

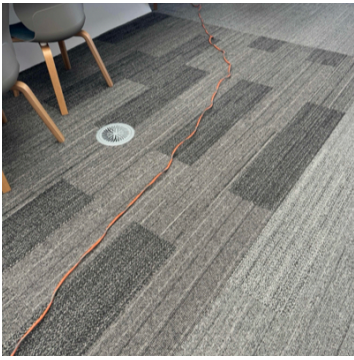


8. 311 Local History: Filter Change



9. Third Floor - Main Area: Equipment

- 1 - Air Scrubber
- 1 - 50' Extension Cord



10. Third Floor - Main Area: Temperature and Humidity

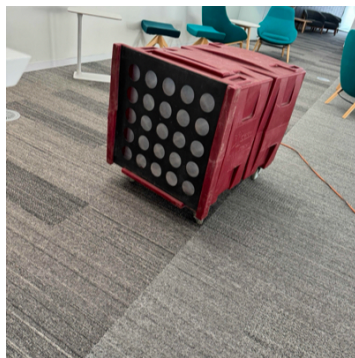
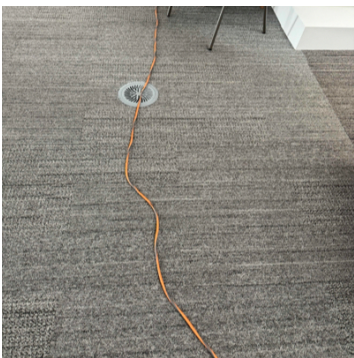


11. Third Floor - Main Area: Filter Change



12. Second Floor - Main Area: Equipment

- 1 - 50' Extension Cord
- 2 - Air Scrubbers



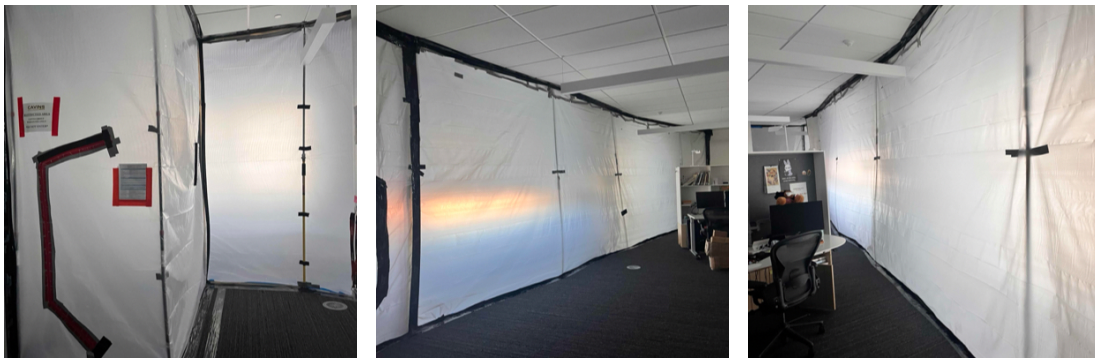
13. Second Floor - Main Area: Temperature and Humidity



14. Second Floor - Main Area: Filter Change



15. 201A Staff Only: Containment Upon Arrival/Departure



16. 201A Staff Only: Equipment

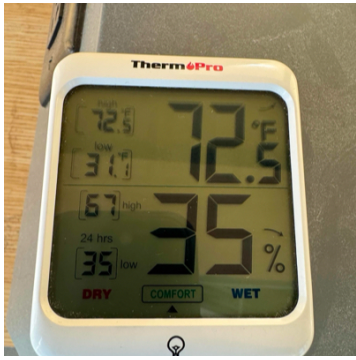
10 - Zip Post



17. Second Floor - Southeast Corner: Containment Upon Arrival/Departure



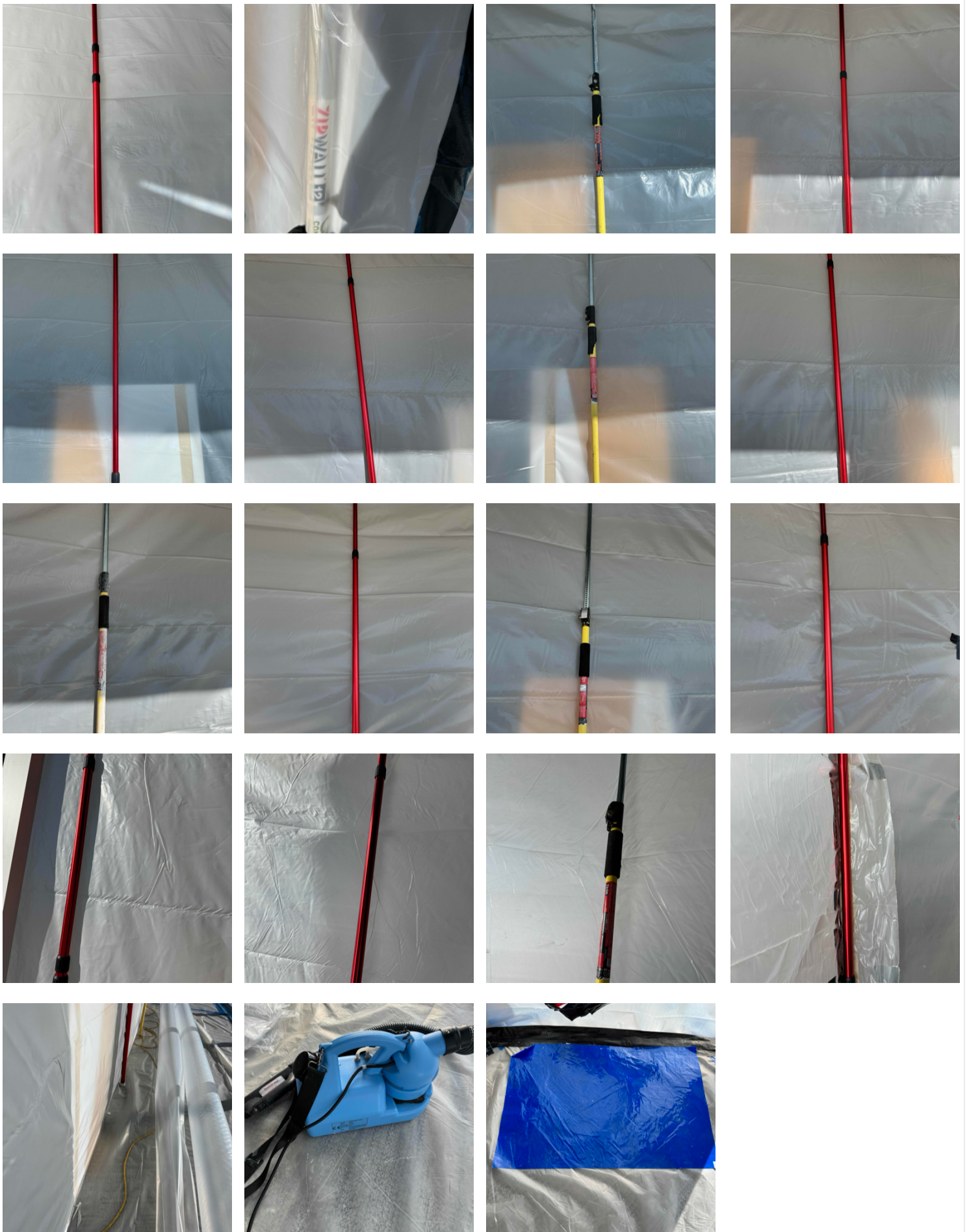
18. Second Floor - Southeast Corner: Temperature and Humidity



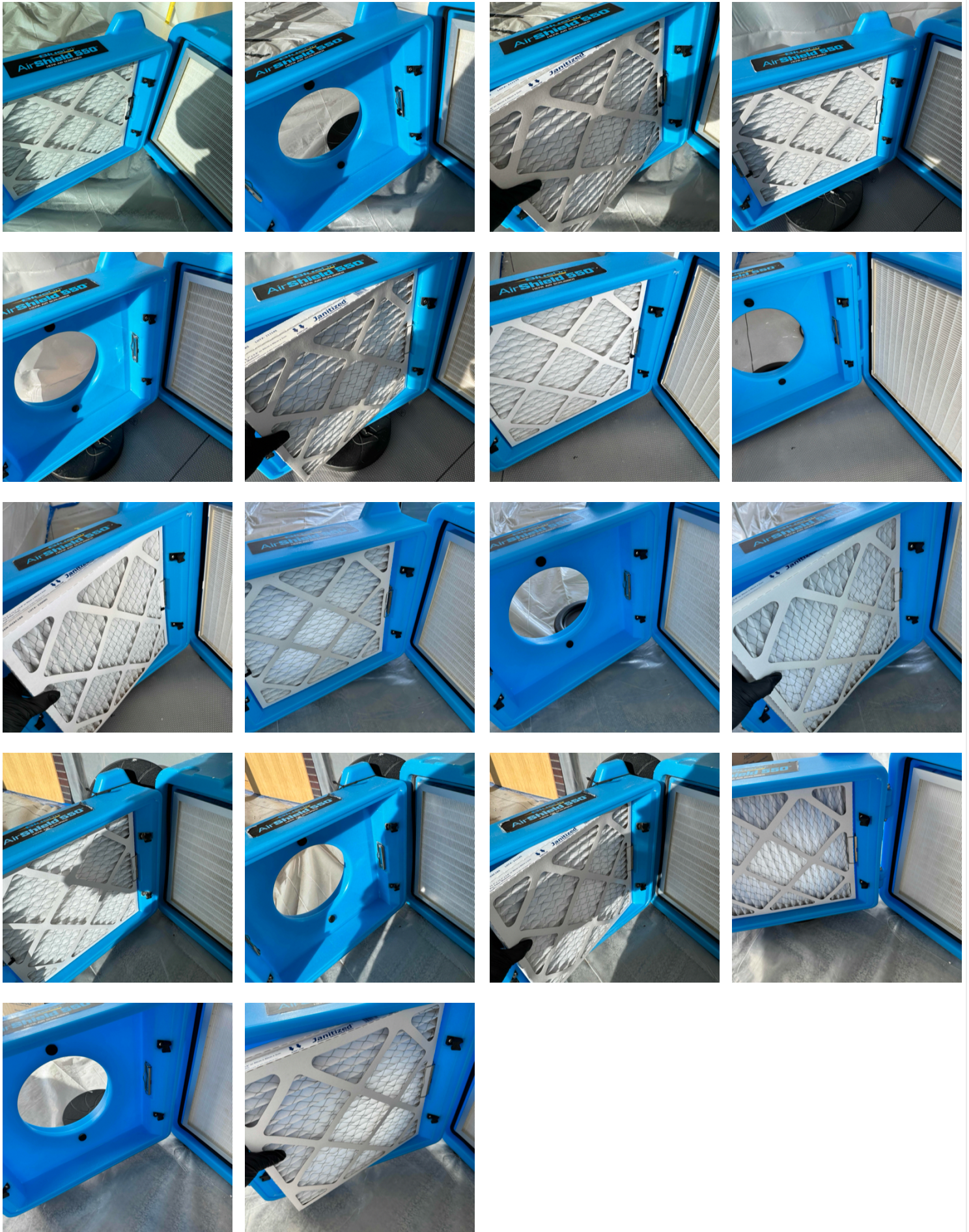
19. Second Floor - Southeast Corner: Equipment

- 6 - Air Scrubbers
- 22 - Zip Post
- 1 - 50' Extension Cord
- 1 - Fogger





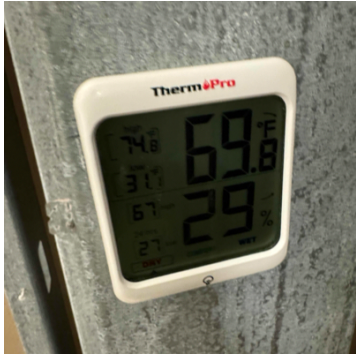
20. Second Floor - Southeast Corner: Filter Change



21. Stairwell: Containment Upon Arrival/Departure

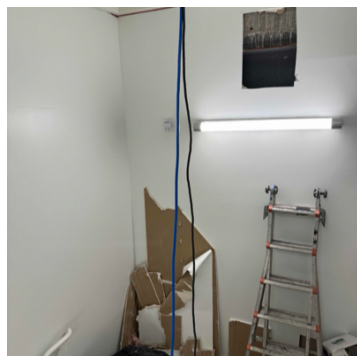
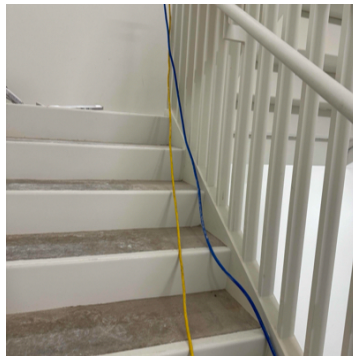


22. Stairwell: Temperature and Humidity



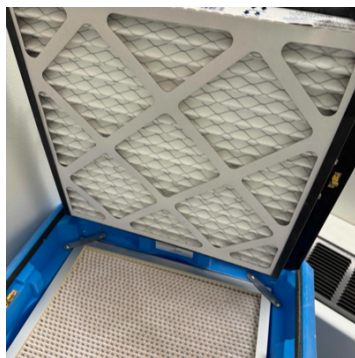
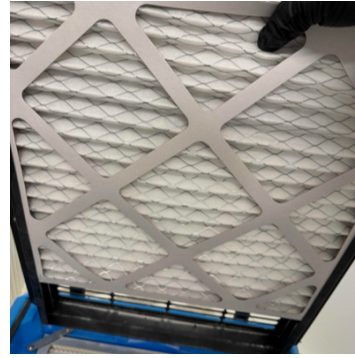
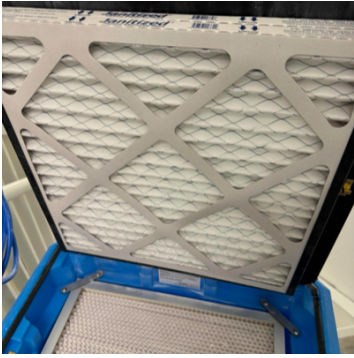
23. Stairwell: Equipment

- 4 - Air Scrubbers
- 3 - 100' Extension Cord
- 1 - 50' Extension Cord





24. Stairwell: Filter Change



25. First Floor - Main Area: Temperature and Humidity



26. First Floor - Main Area: Equipment

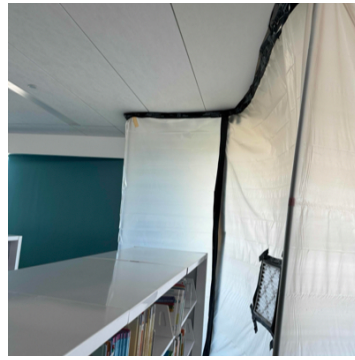
2 - Air Scrubbers



27. First Floor - Main Area: Filter Change



28. First Floor - Bay Window's (Children's Area): Containment Upon Arrival/Departure

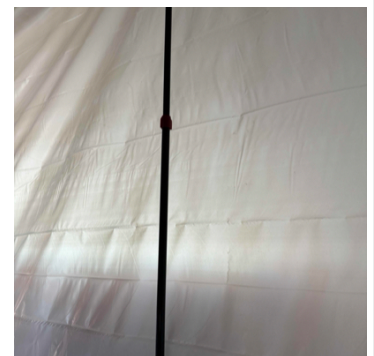
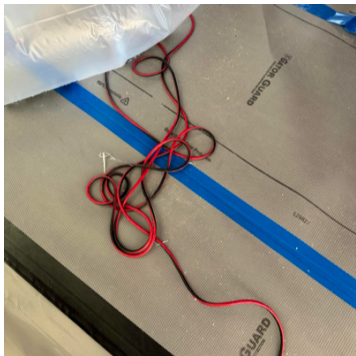


29. First Floor - Bay Window's (Children's Area): Temperature and Humidity



30. First Floor - Bay Window's (Children's Area): Equipment

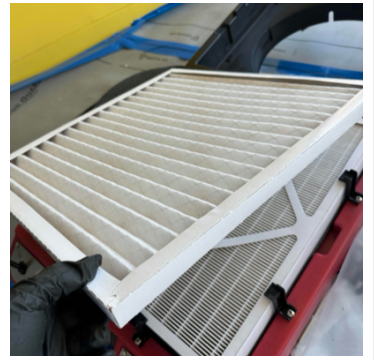
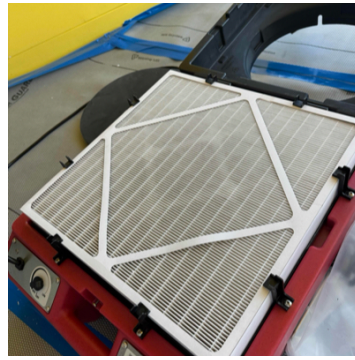
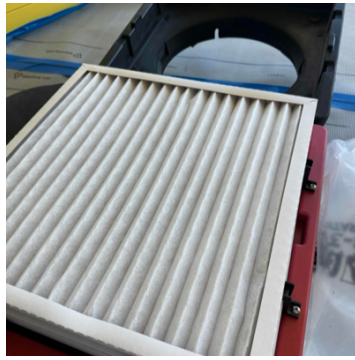
- 1 - 50' Extension Cord
- 4 - Air Scrubbers
- 12 - Zip Post





31. First Floor - Bay Window's (Children's Area): Filter Change

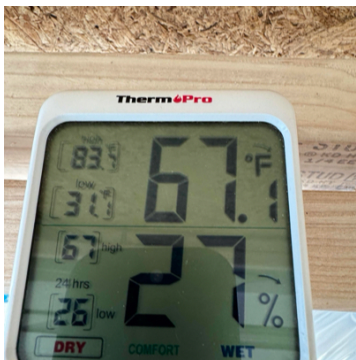




32. 149 Storytime - Containment Upon Arrival/Departure



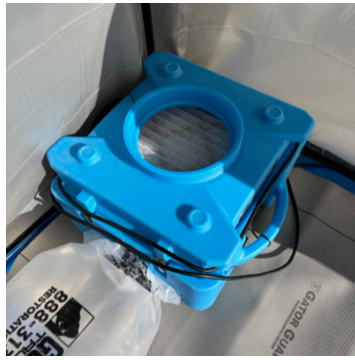
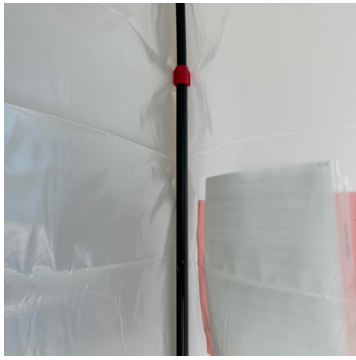
33. 149 Storytime: Temperature and Humidity



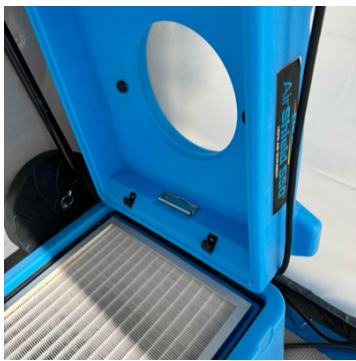
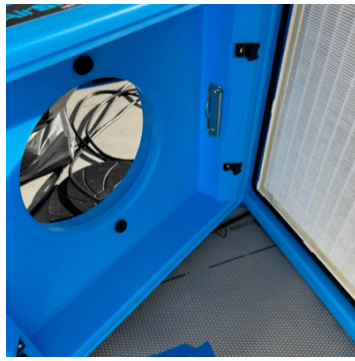
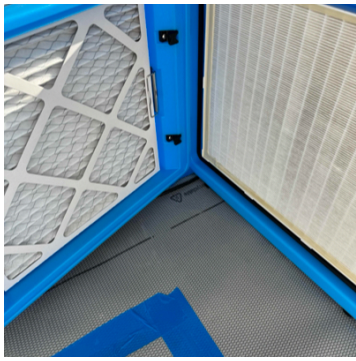
34. 149 Storytime: Equipment

- 5 - Zip Post
- 2 - Air Scrubbers





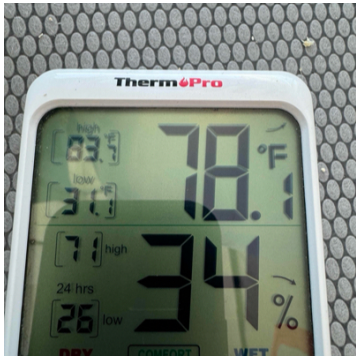
35. 149 Storytime: Filter Change



36. Main Entrance - Children's Area: Containment Upon Arrival/Departure

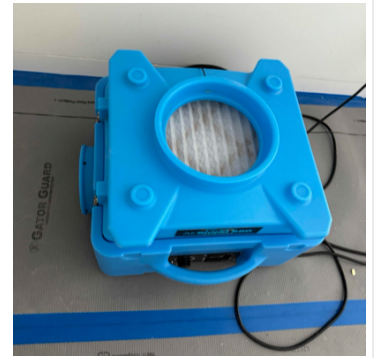
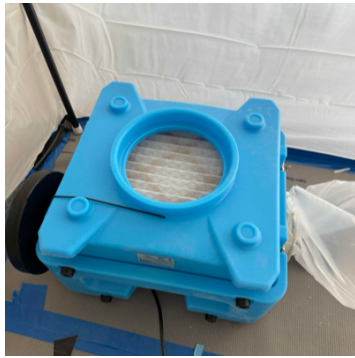


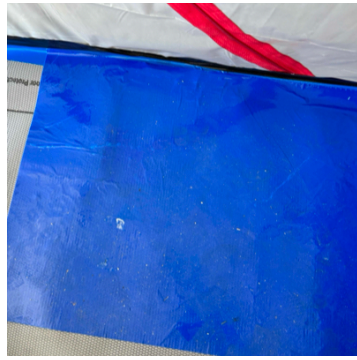
37. Main Entrance - Children's Area: Temperature and Humidity



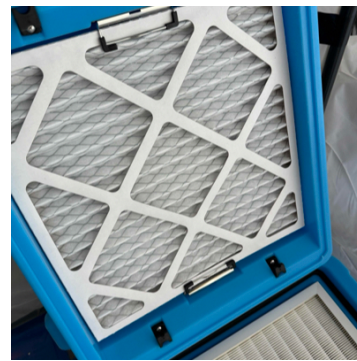
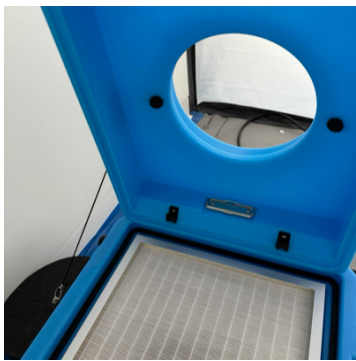
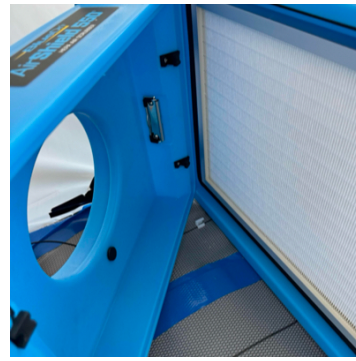
38. Main Entrance - Children's Area: Equipment

- 3 - Air Scrubbers
- 10 - Zip Post

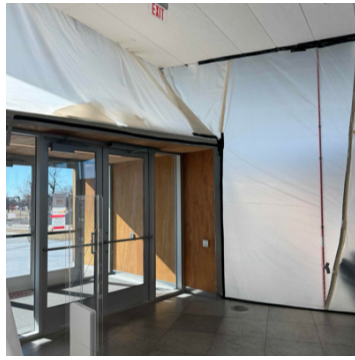




39. Main Entrance - Children's Area: Filter Change



40. First Floor - Southwest Vestibule: Containment Upon Arrival/Departure



41. First Floor - Southwest Vestibule: Temperature and Humidity



42. First Floor - Southwest Vestibule: Equipment

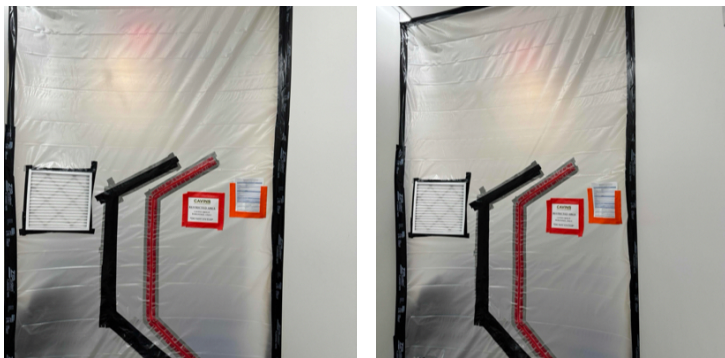
- 2 - Air Scrubbers
- 2 - Zip Post



43. First Floor - Southwest Vestibule: Filter Change



44. So 115: Containment Upon Arrival/Departure

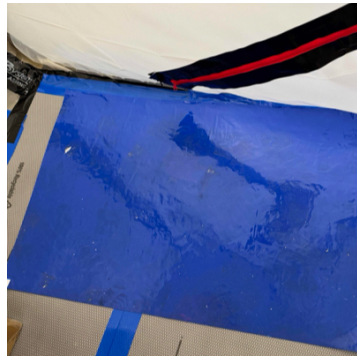


45. So 115: Temperature and Humidity

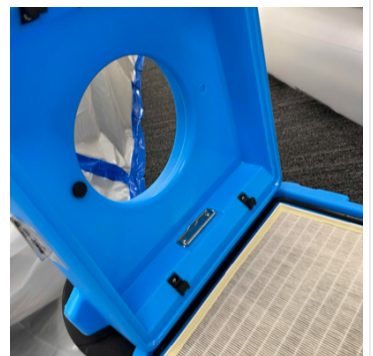
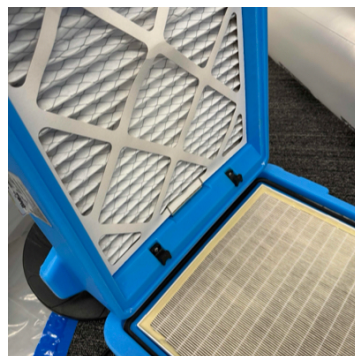
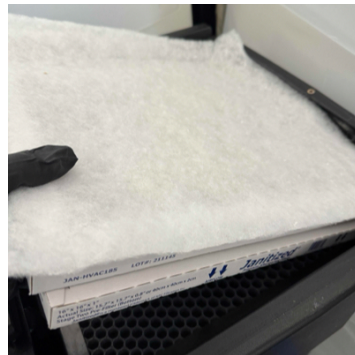
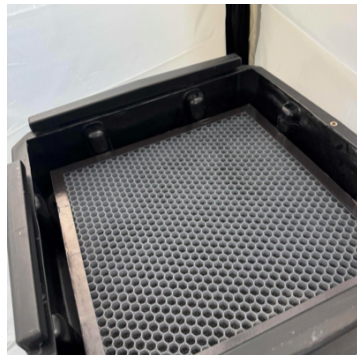
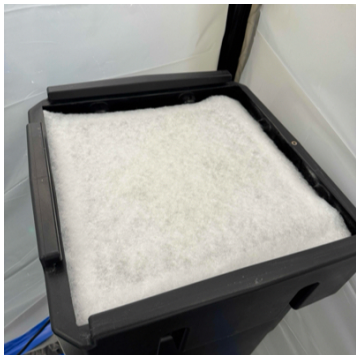


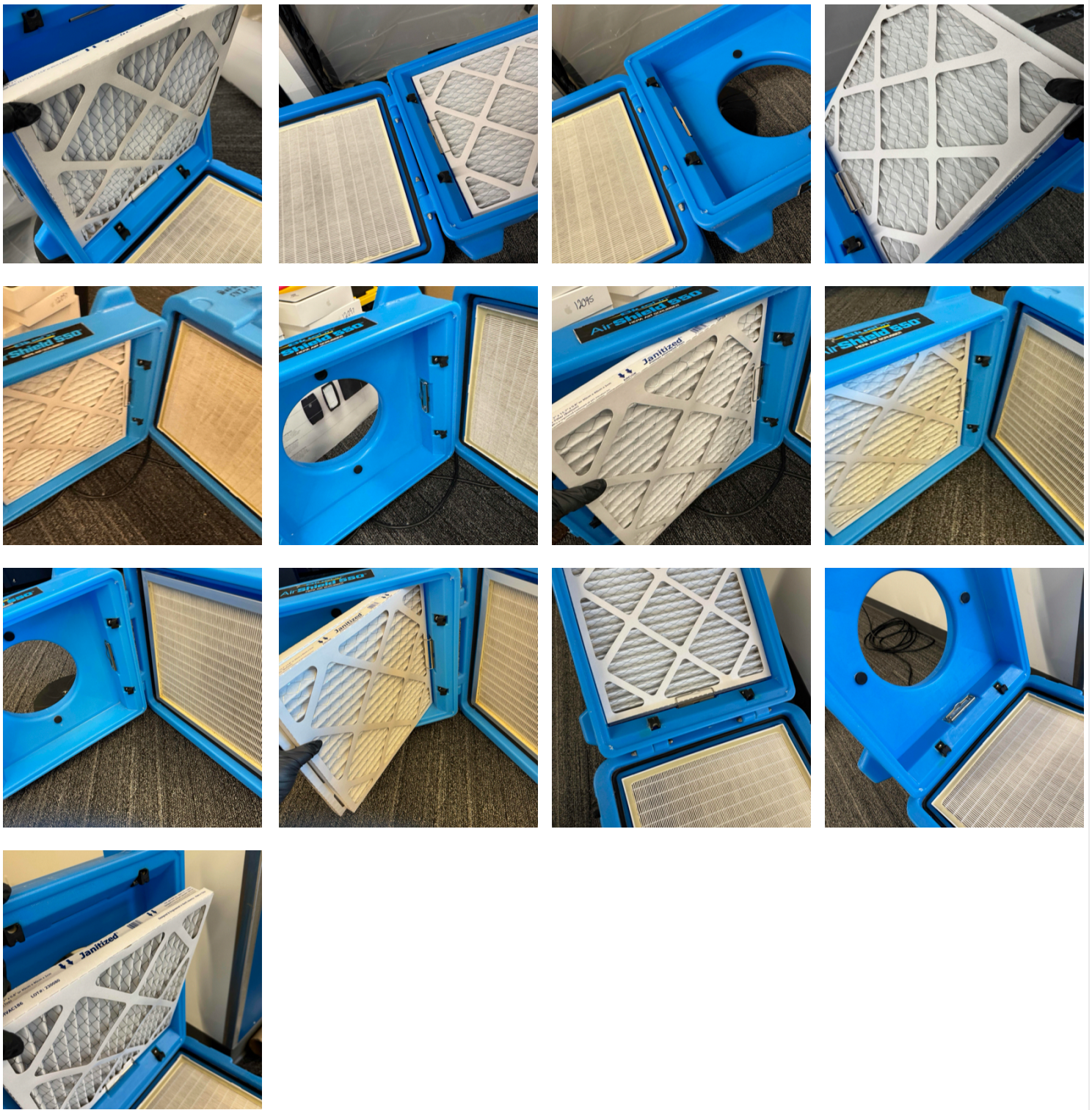
46. So 115: Equipment

- 7 - Air Scrubbers
- 1 - Fogger

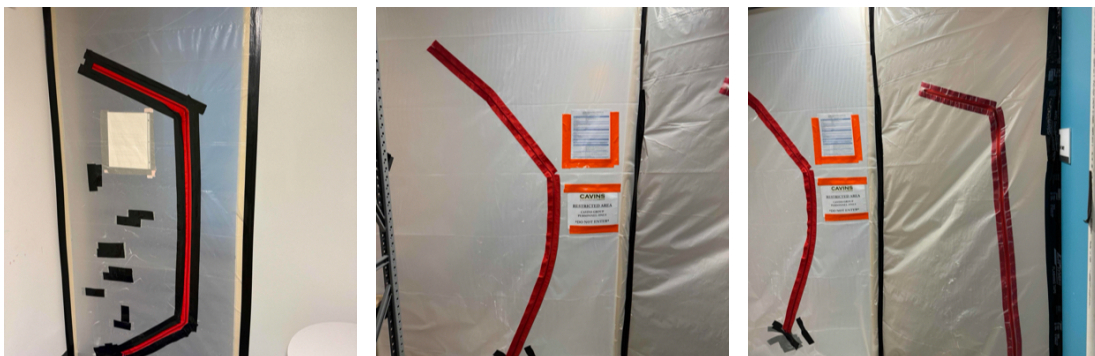


47. So 115: Filter Change



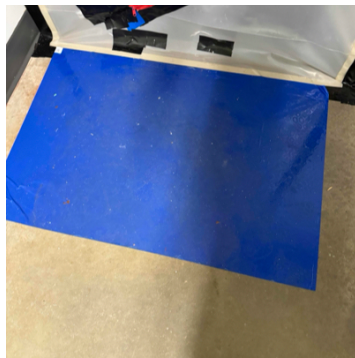
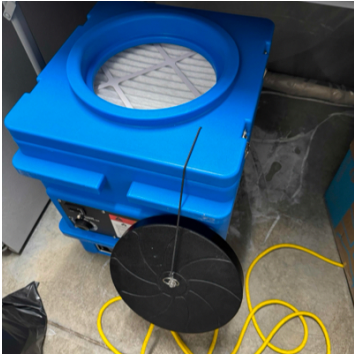


48. Garage: Containment Upon Arrival/Departure



49. Garage: Equipment

- 4 - Air Scrubbers
- 3 - 50' Extension Cords
- 1 - 25' Extension Cord



50. Garage: Temperature and Humidity

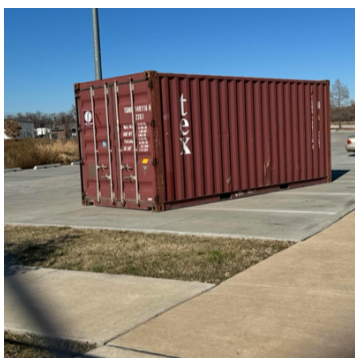


51. Garage: Filter Change



52. Exterior: Equipment

2 - 20' Conex Boxes



53. Exterior: Temperature and Humidity



54. Overall : Equipment

- 67 - Zip Post
- 39 - Air Scrubbers
- 3 - 100' Extension Cords
- 8 - 50' Extension Cords
- 1 - 25' Extension Cords
- 5 - Foggers