

# Norman Public Library Central - Mold

103 W Acres St Norman, OK 73069



Date Fri 12/22/2023

Job #

## Weather

6:00 AM

54°

Rain, Overcast

Wind: 8 MPH | Precipitation: .01" | Humidity: 98%

12:00 PM

58°

Overcast

Wind: 8 MPH | Precipitation: .0" | Humidity: 94%

4:00 PM

65°

Clear

Wind: 8 MPH | Precipitation: .0" | Humidity: 67%

## Work Logs

Name	Description
City of Norman Central Library - Mold	Cavins Group arrived on site and suited up in proper PPE. Upon suiting up, Cavins technicians checked all containments and equipment for defects. All air scrubber filters were changed, temperature and humidity readings were taken in all containments, all three floors in the main area, and one exterior reading.
Total	

## General Notes

### 1. Exterior: Equipment

2 - 20' Conex Box



### 2. Exterior: Temperature and Humidity



### 3. 303 Storage: Containment Upon Arrival/Departure

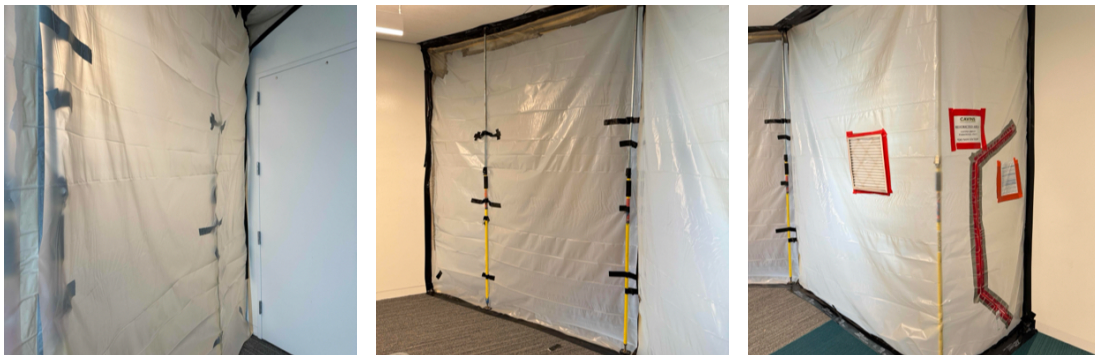


### 4. 303 Storage: Equipment

2 - Zip Post



### 5. 305 Pioneer: Containment Upon Arrival/Departure



### 6. 305 Pioneer: Equipment

4 - Zip Post





**7. Third Floor - Main Area: Equipment**

- 1 - Air Scrubber
- 1 - 50' Extension Cord



**8. Third Floor - Main Area: Filter Change**



**9. Third Floor - Main Area: Temperature and Humidity**



**10. 311 Local History: Containment Upon Arrival/Departure**



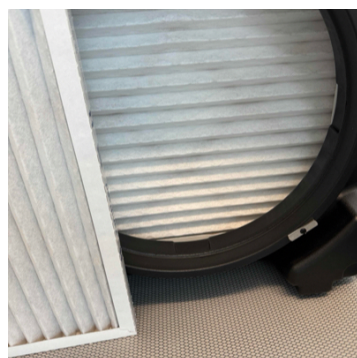
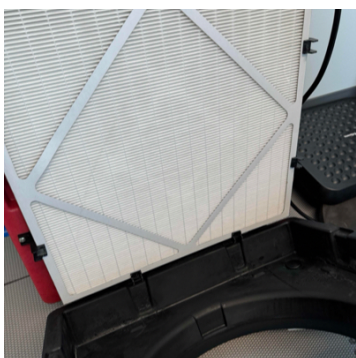
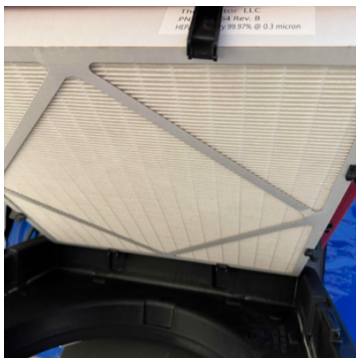


### 11. 311 Local History: Equipment

- 2 - Air Scrubbers
- 1 - Fogger



### 12. 311 Local History: Filter Change



### 13. 311 Local History: Temperature and Humidity



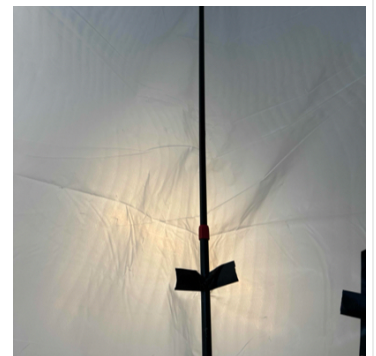
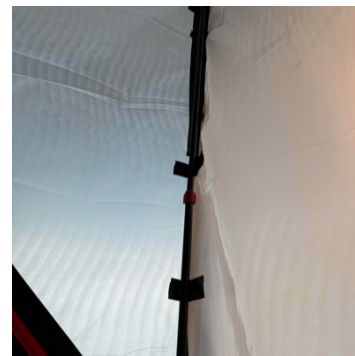
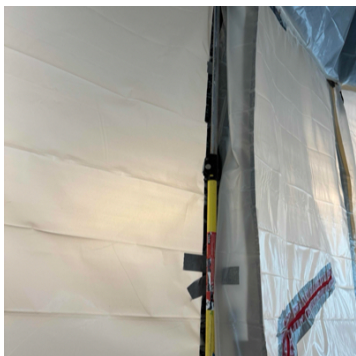


**14. 201A Staff Only: Containment Upon Arrival/Departure**



**15. 201A Staff Only: Equipment**

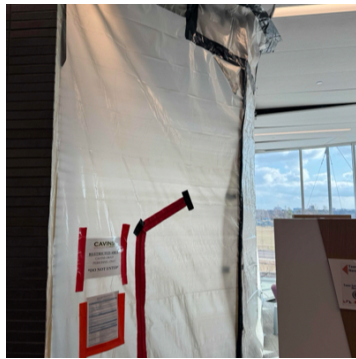
**10 - Zip Post**







**16. Second Floor - Southeast Corner: Containment Upon Arrival/Departure**

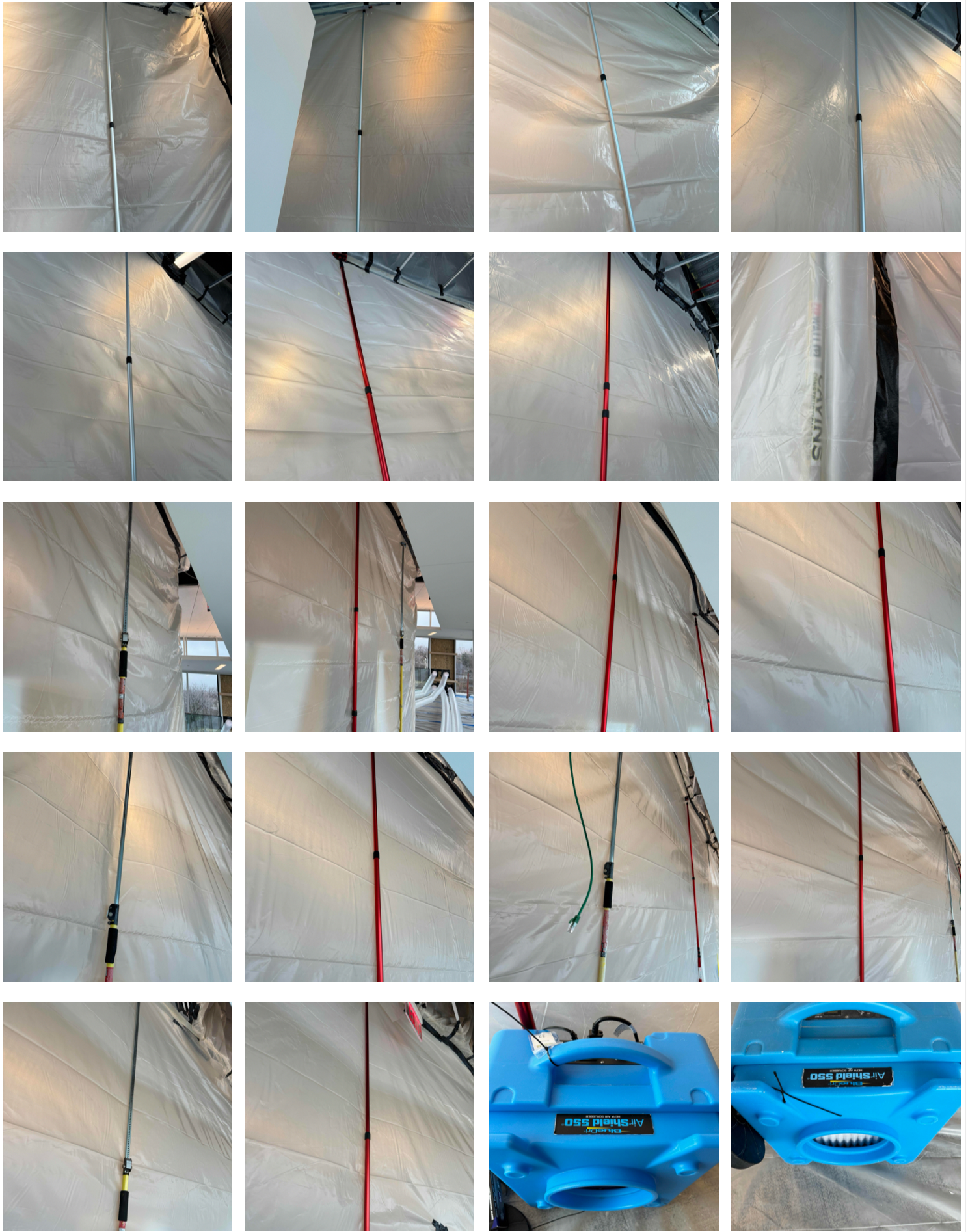


**17. Second Floor - Southeast Corner: Equipment**

- 22 - Zip Post
- 6 - Air Scrubbers
- 1 - 50' Extension Cord



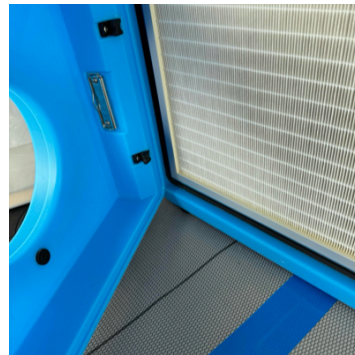
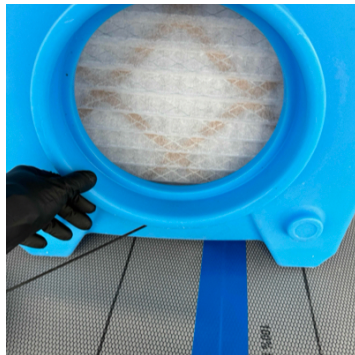
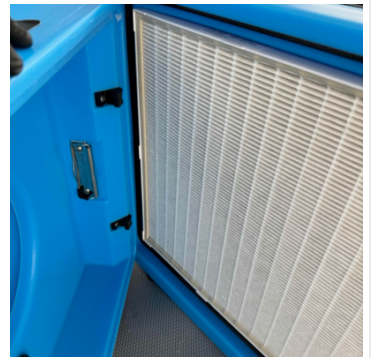
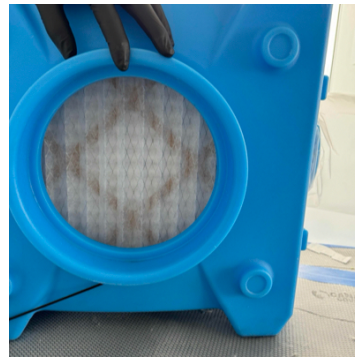
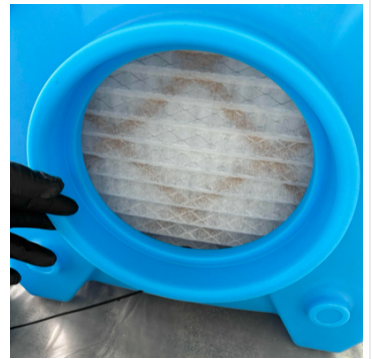
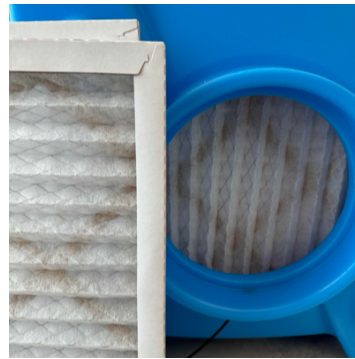
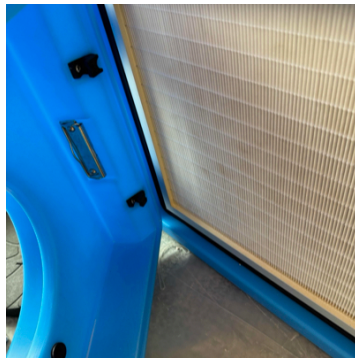




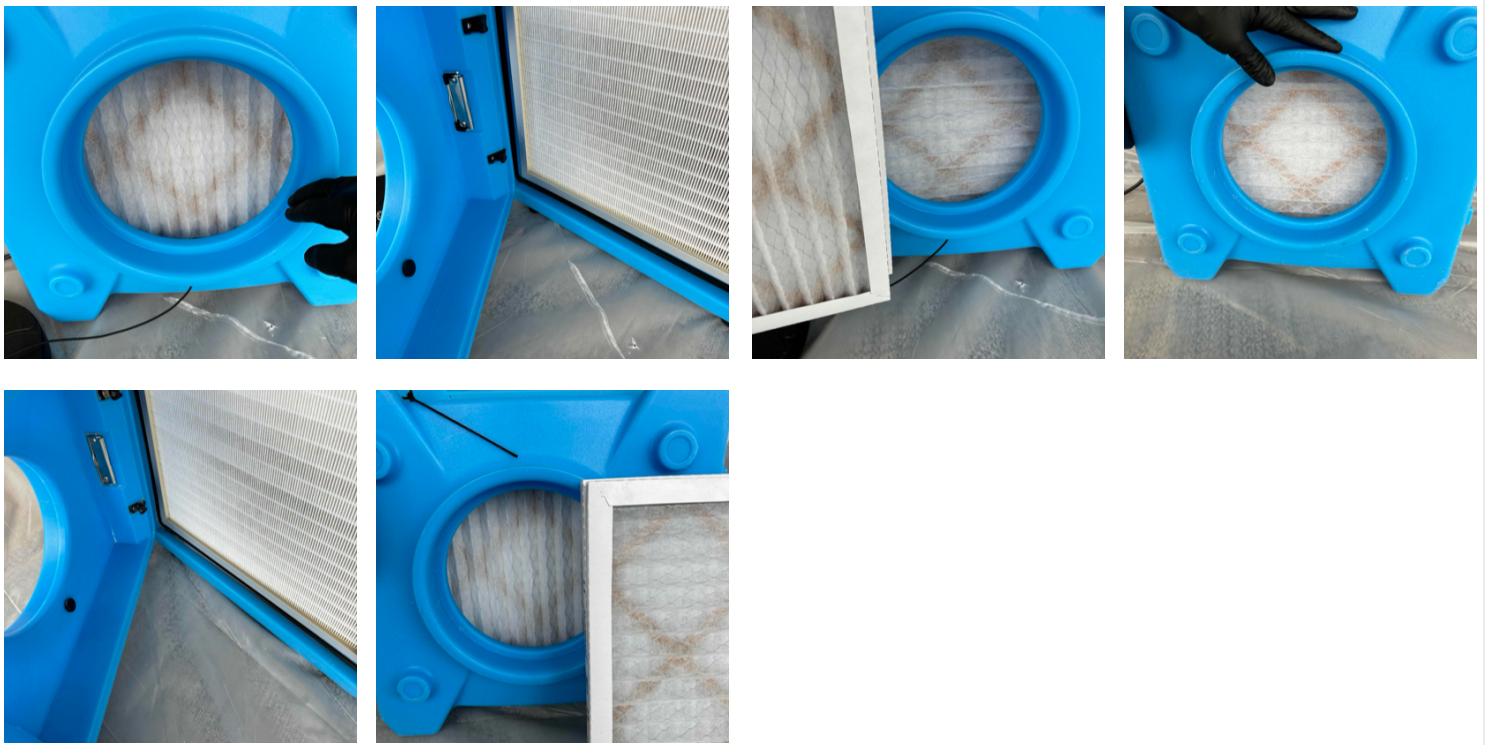




18. Second Floor - Southeast Corner: Filter Change







**19. Second Floor - Southeast Corner: Temperature and Humidity**



**20. Stairwell: Containment Upon Arrival/Departure**



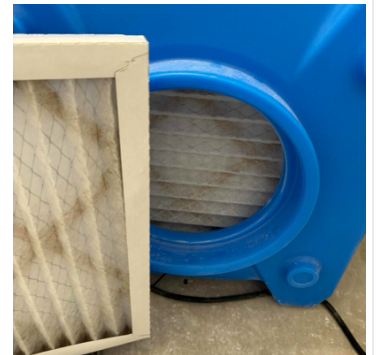
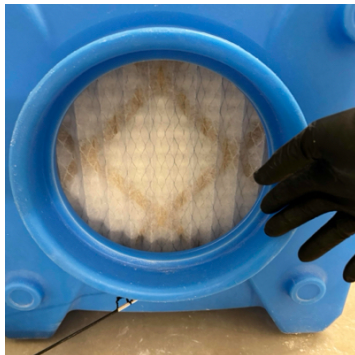
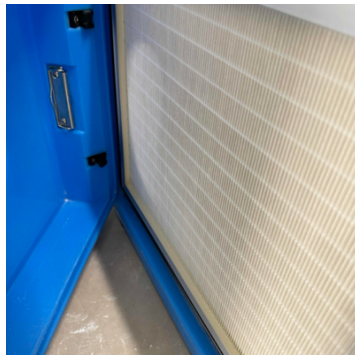
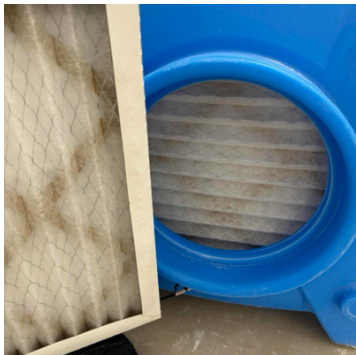
**21. Stairwell: Equipment**

- 4 - Air Scrubbers
- 1 - Zip Post
- 2 - Hepa Vacuums
- 3 - 100' Extension Cords
- 2 - 50' Extension Cords
- 1 - Fogger

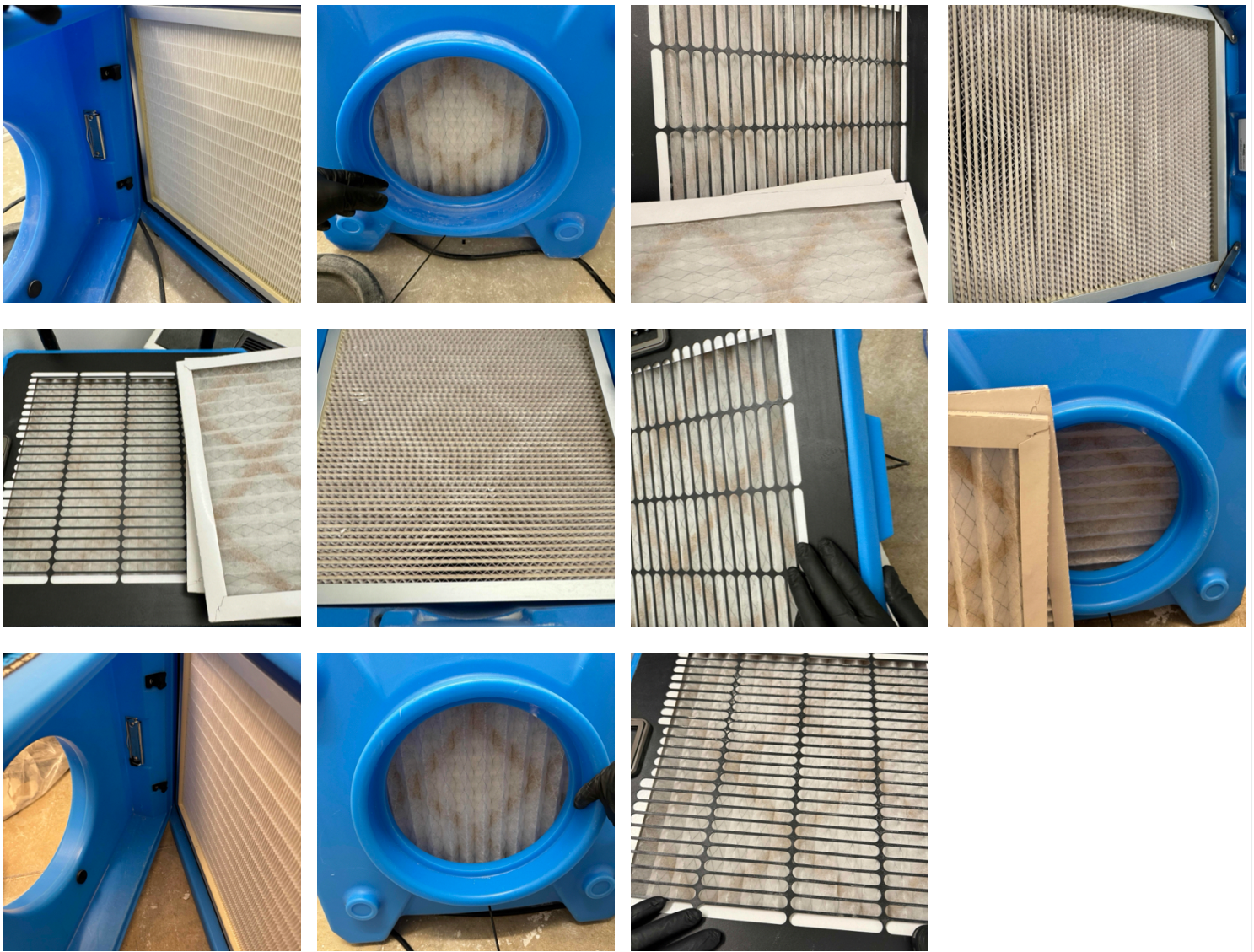




22. Stairwell: Filter Change







**23. Stairwell: Temperature and Humidity**



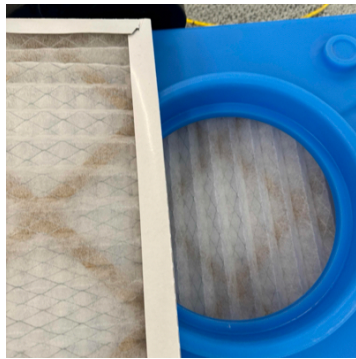
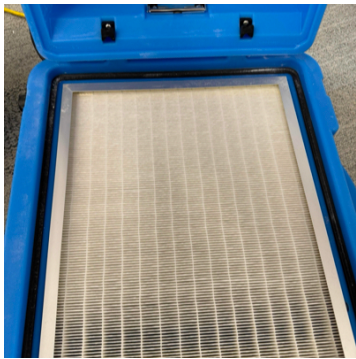
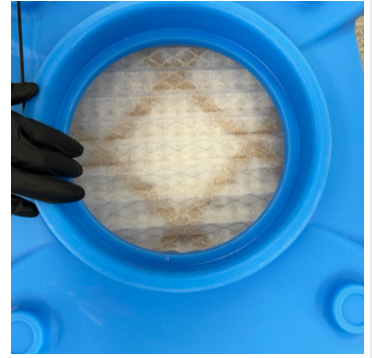
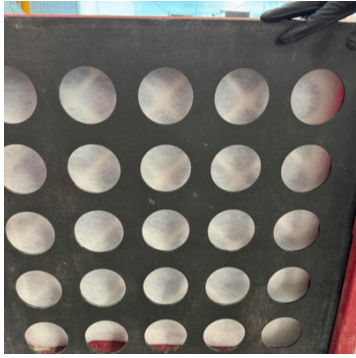
**24. Second Floor - Main Area: Equipment**

- 2 - Air Scrubbers
- 1 - 25' Extension Cord





**25. Second Floor - Main Area: Filter Change**

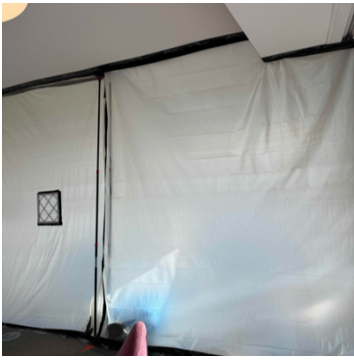


**26. Second Floor - Main Area: Temperature and Humidity**



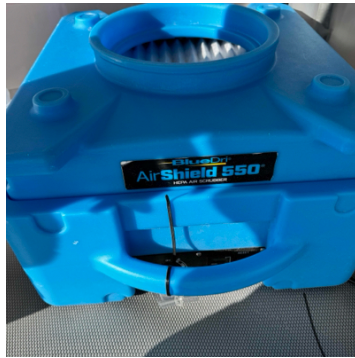
**27. 149 Storytime: Containment Upon Arrival/Departure**



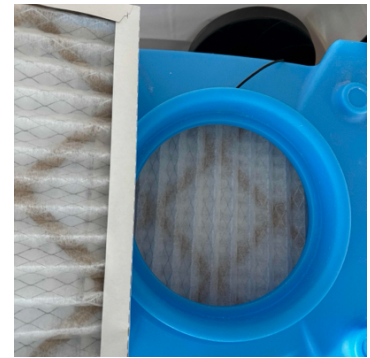
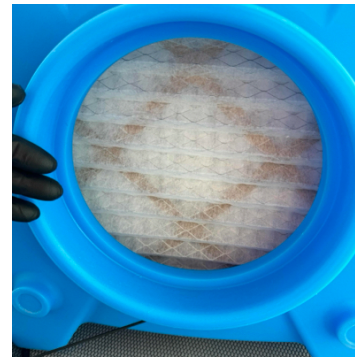
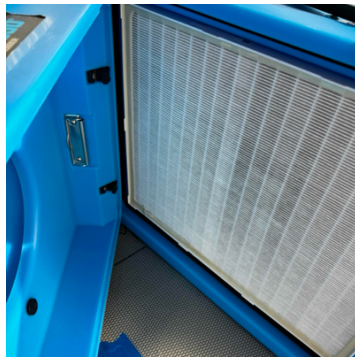
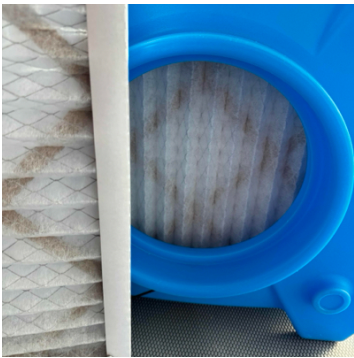


**28. 149 Storytime: Equipment**

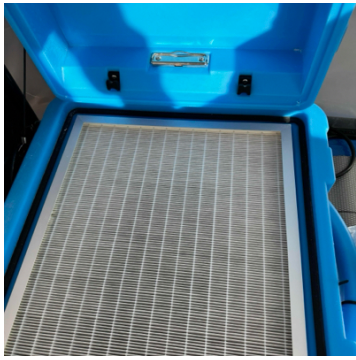
- 5 - Zip Post
- 2 - Air Scrubbers



**29. 149 Storytime: Filter Change**



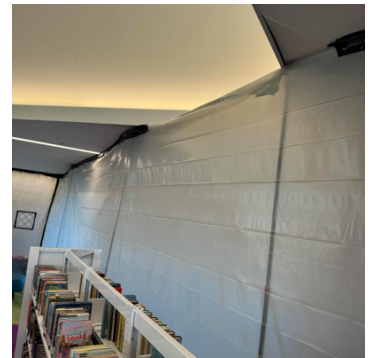
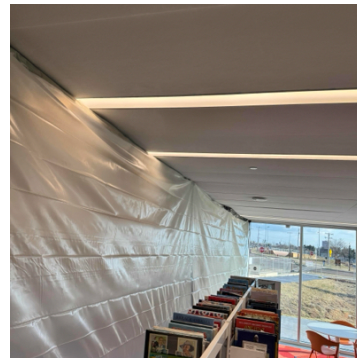




**30. 149 Storytime: Temperature and Humidity**

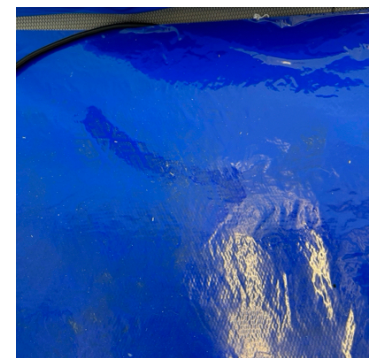


**31. First Floor - Bay Windows (Children's Area): Containment Upon Arrival/Departure**

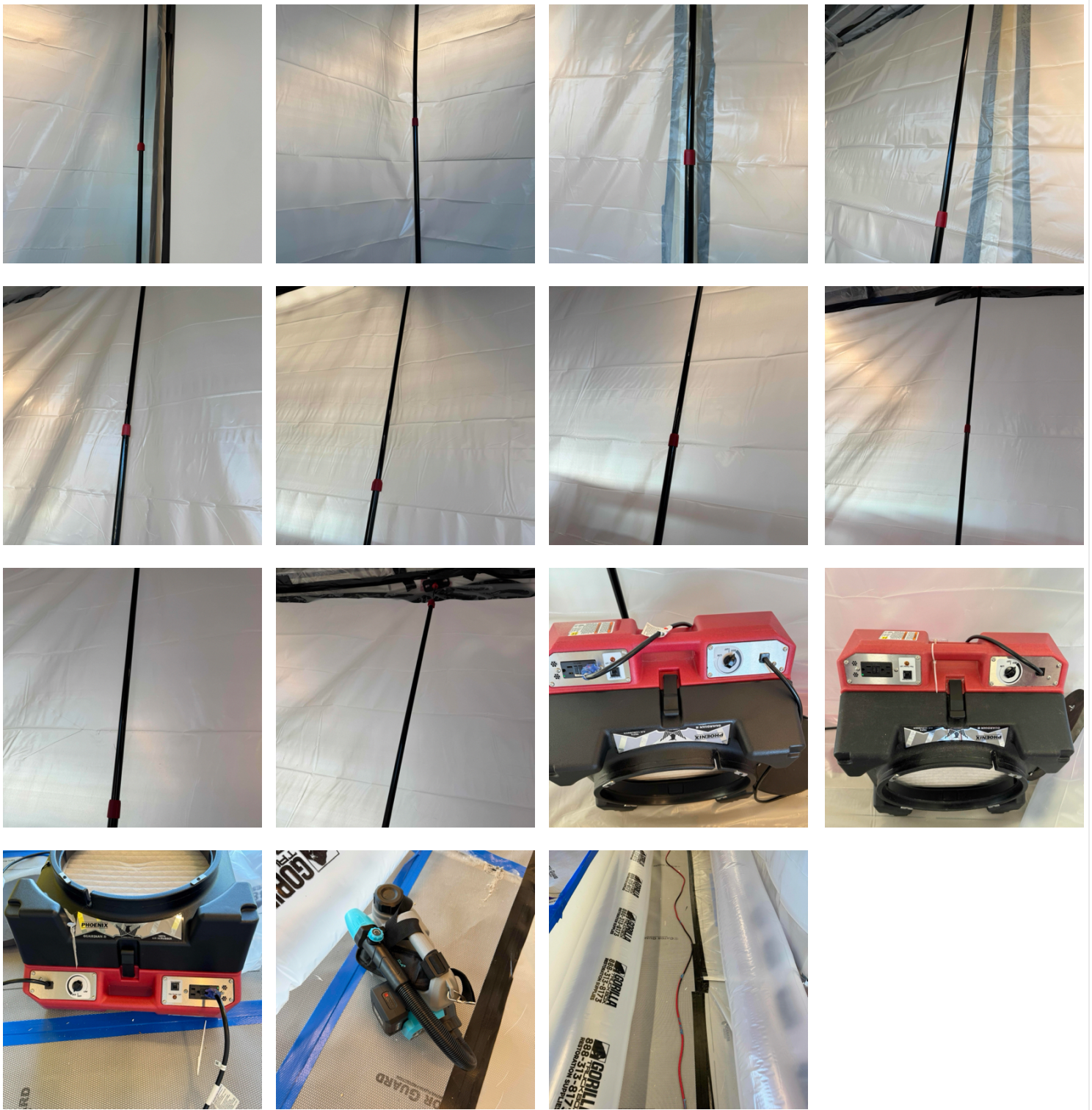


**32. First Floor - Bay Windows (Children's Area): Equipment**

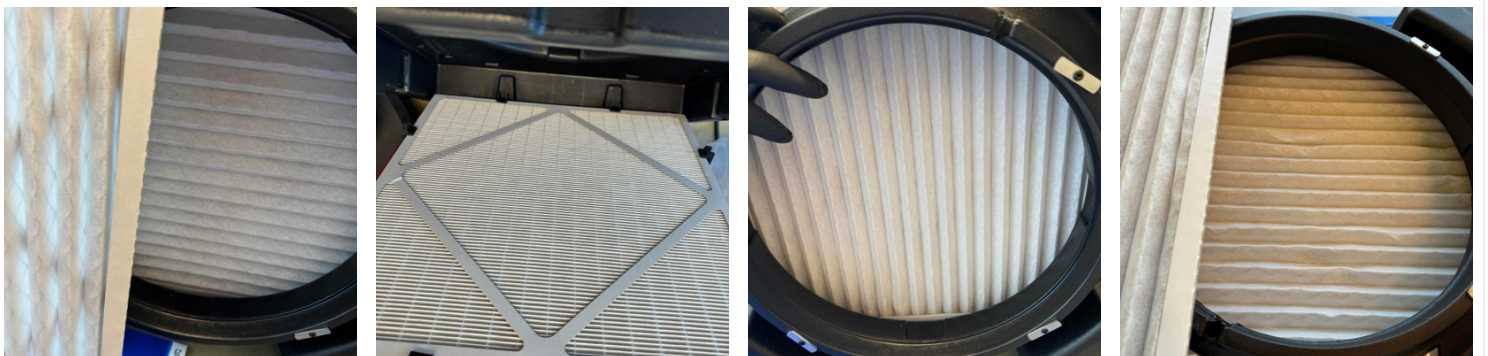
- 12 - Zip Post
- 4 - Air Scrubbers
- 1 - 50' Extension Cord







**33. First Floor - Bay Windows (Children's Area): Filter Change**







**34. First Floor - Bay Windows (Children's Area): Temperature and Humidity**



**35. First Floor - Main Area: Equipment**

2 - Air Scrubbers



**36. First Floor - Main Area: Filter Change**

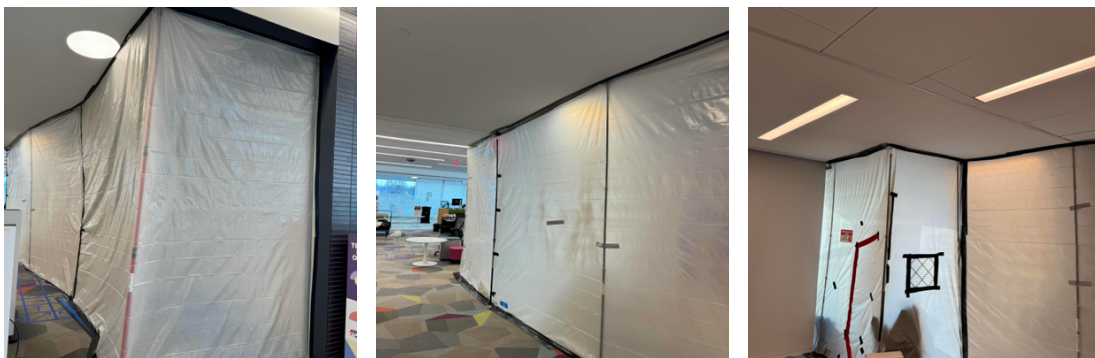




**37. First Floor - Main Area: Temperature and Humidity**



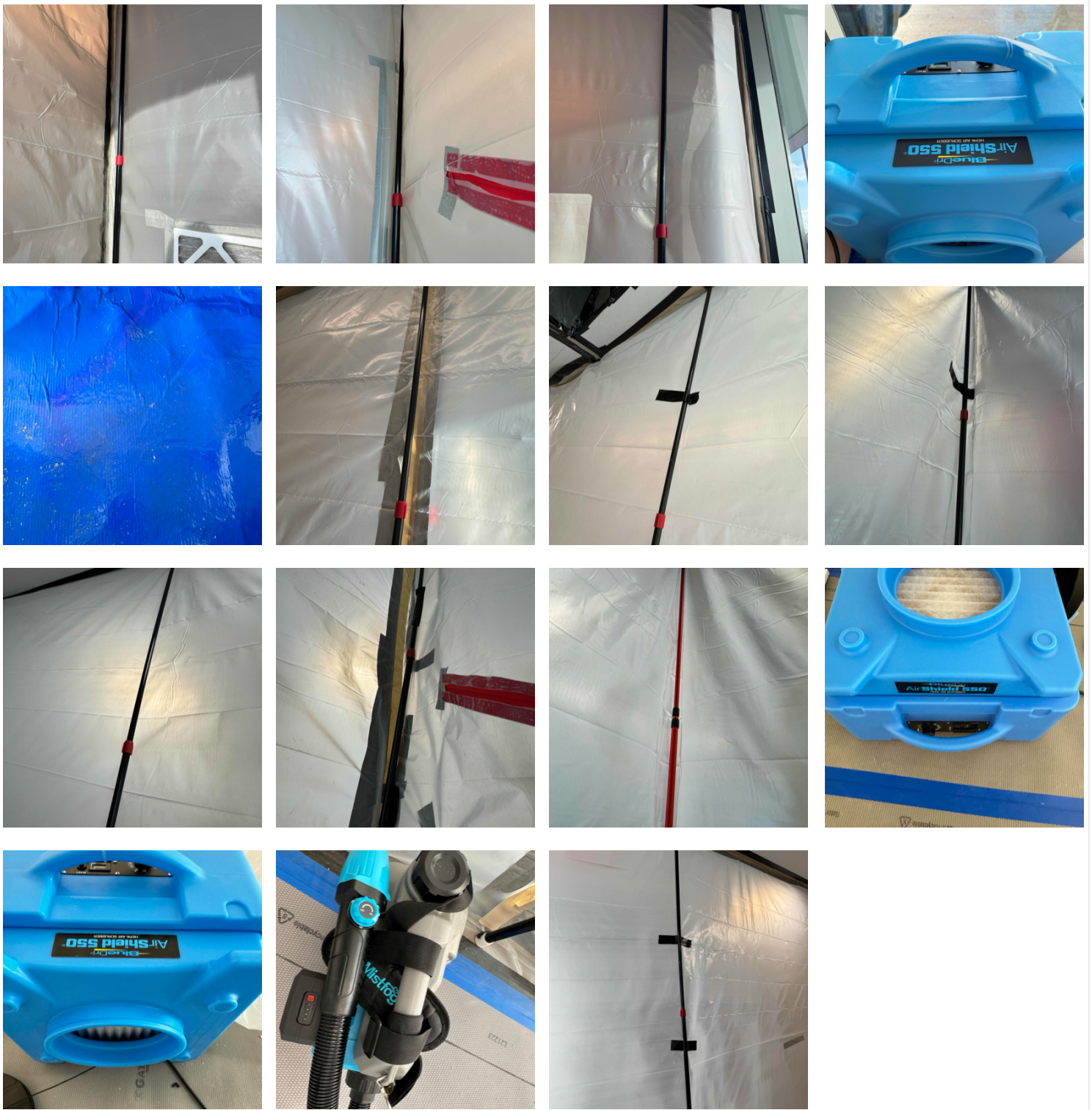
**38. Main Entrance - Children's Area: Containment Upon Arrival/Departure**



**39. Main Entrance - Children's Area: Equipment**

- 10 - Zip Post
- 3 - Air Scrubbers





**40. Main Entrance - Children's Area: Filter Change**







**41. Main Entrance - Children's Area: Temperature and Humidity**



**42. First Floor - Southwest Vestibule: Containment Upon Arrival/Departure**



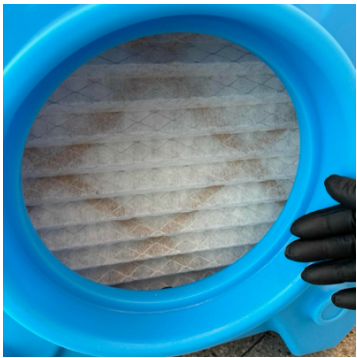
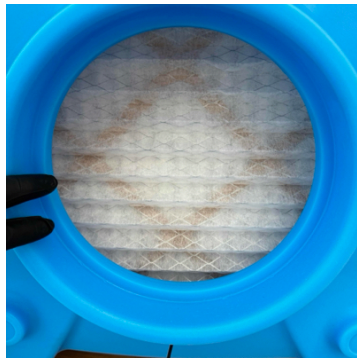
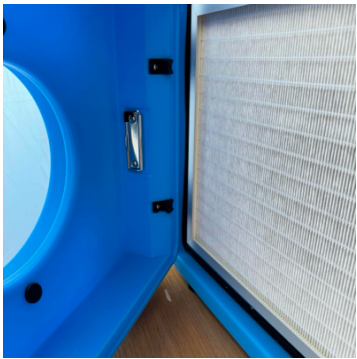
**43. First Floor - Southwest Vestibule: Equipment**

- 2 - Air Scrubbers
- 2 - Zip Post





**44. First Floor - Southwest Vestibule: Filter Change**



**45. First Floor - Southwest Vestibule: Temperature and Humidity**





#### 46. SO 115: Containment Upon Arrival/Departure

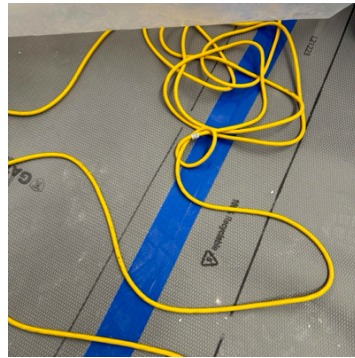
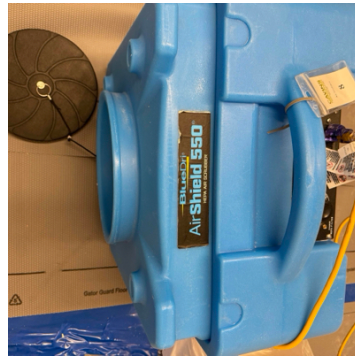


#### 47. SO 115: Equipment

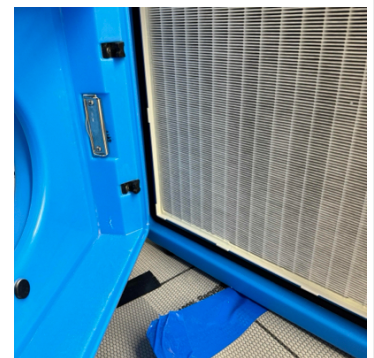
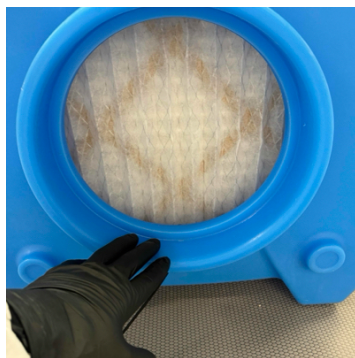
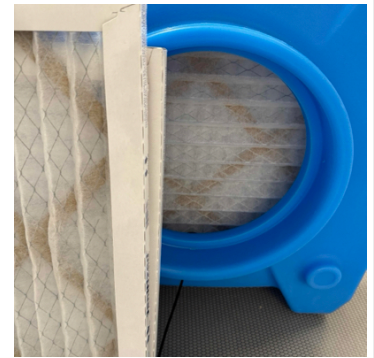
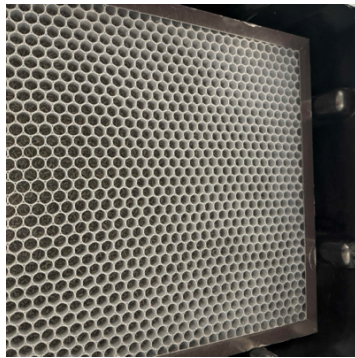
- 4 - Zip Post
- 9 - Air Scrubbers
- 1 - Hep Vacuum
- 1 - 50' Extension Cord
- 1 - Fogger



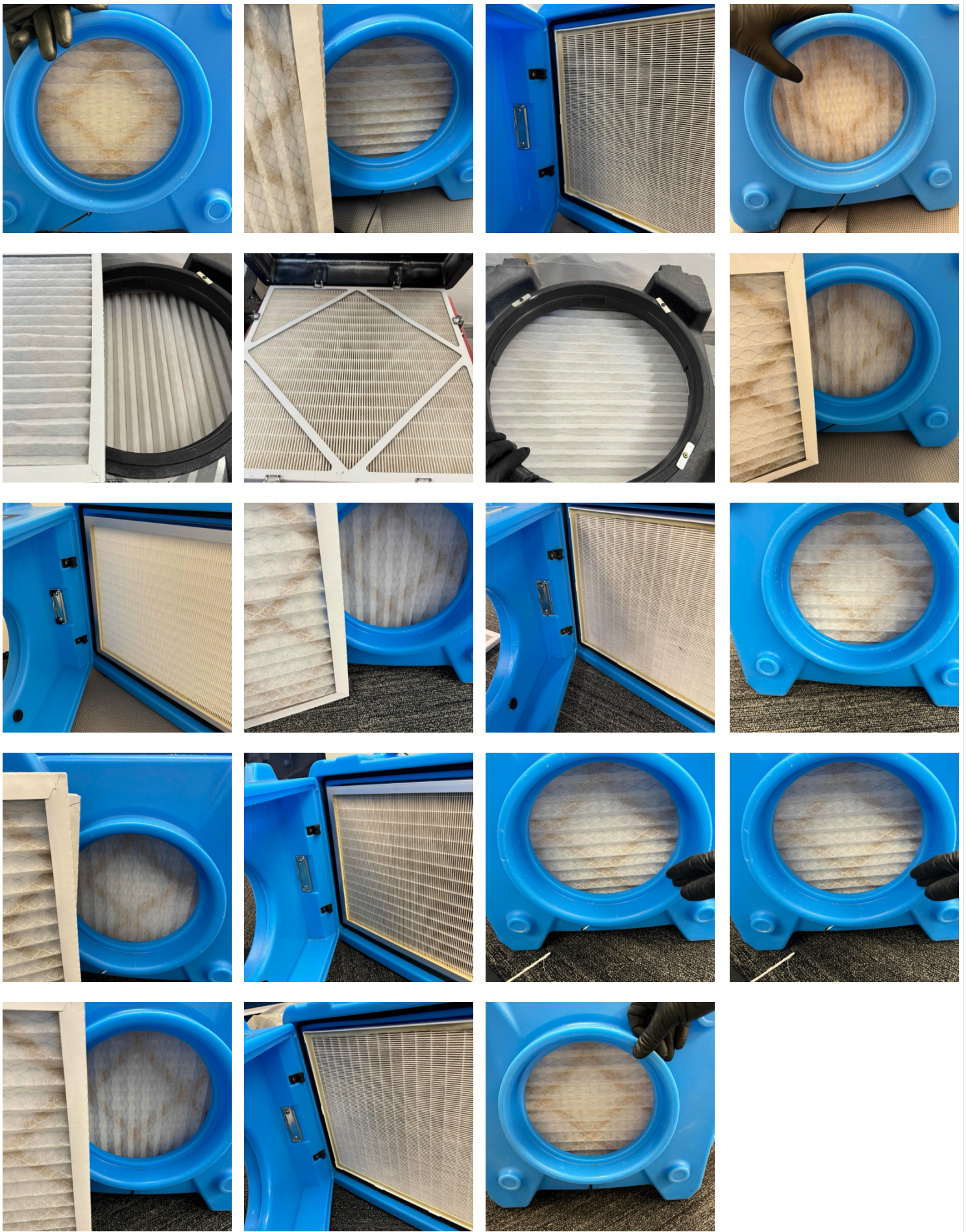




48. SO 115: Filter Change







49. SO 115: Temperature and Humidity





50. Garage: Containment Upon Arrival/Departure



51. Garage: Equipment

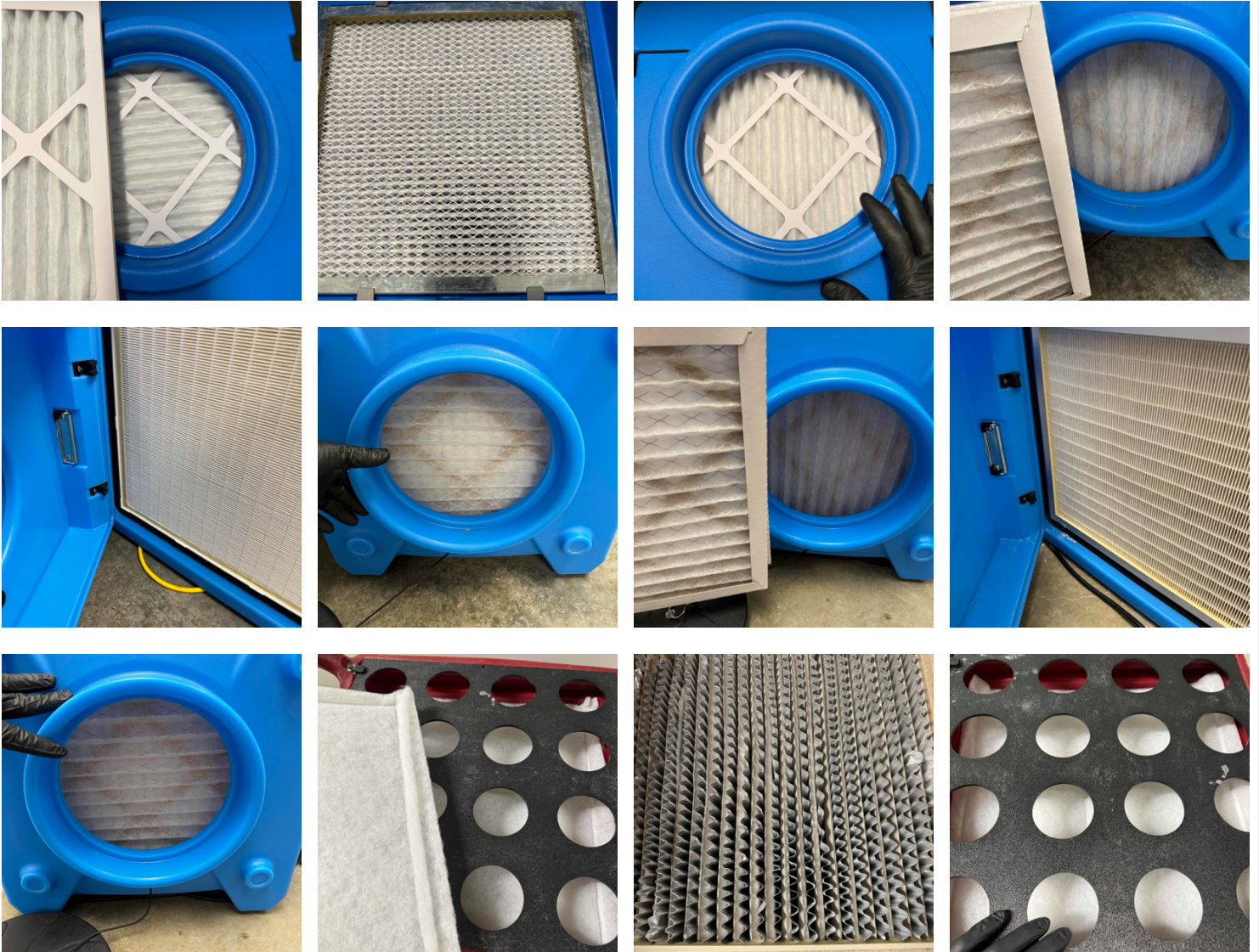
- 4 - Air Scrubbers
- 2 - Foggers
- 2 - 50' Extension Cords
- 1 - 25' Extension Cord







**52. Garage: Filter Change**



**53. Garage: Temperature and Humidity**





#### 54. Overall: Equipment

- 72 - Zip Post
- 42 - Air Scrubbers
- 5 - Foggers
- 3 - Hepa Vacuums
- 8 - 50' Extension Cords
- 3 - 100' Extension Cords
- 2 - 25' Extension Cords