

Date Tue 01/02/2024

Job #

Weather

6:00 AM

30° 

Clear

Wind: 4 MPH | Precipitation: .0" | Humidity: 82%

12:00 PM

42° 

Clear

Wind: 13 MPH | Precipitation: .0" | Humidity: 64%

4:00 PM

48° 

Clear

Wind: 6 MPH | Precipitation: .0" | Humidity: 54%

Work Logs

Name	Description
Cavins Enviromental	<p>Cavins Group arrived on site and suited up in proper PPE. Upon suiting up, Cavins technicians checked all containments and equipment for defects. All air scrubber filters were changed, temperature and humidity readings were taken in all containments, all three floors in the main area, and one exterior reading. Weekly air quality testing was performed in the common area in all three levels, the children's area, as well as one exterior control sample. Testing consisted of one spore trap sample taken in each area, to include the exterior sample. Temperature and humidity readings were done at the time of testing in the area of testing.</p> <p>Cavins technicians worked on remediation in SO 115.</p> <p>Cavins technicians finished the demo of the stairwell, and began the Phase 1 cleaning process.</p>
Total	

General Notes

1. Exterior: Equipment:

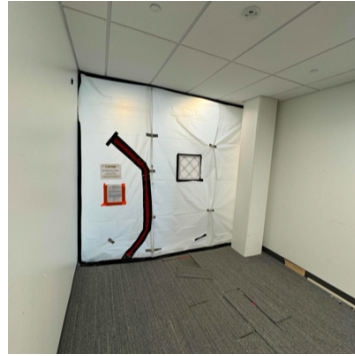
2 - 20' Conex Boxes



2. Exterior: Temperature and Humidity



3. 303 Storage: Containment Upon Arrival/Departure:



4. 303 Storage: Equipment

2 - Zip Post



5. 305 Pioneer: Containment Upon Arrival/Departure:



6. 305 Pioneer: Equipment

4 - Zip Post



7. 311 Local History: Containment Upon Arrival/Departure:

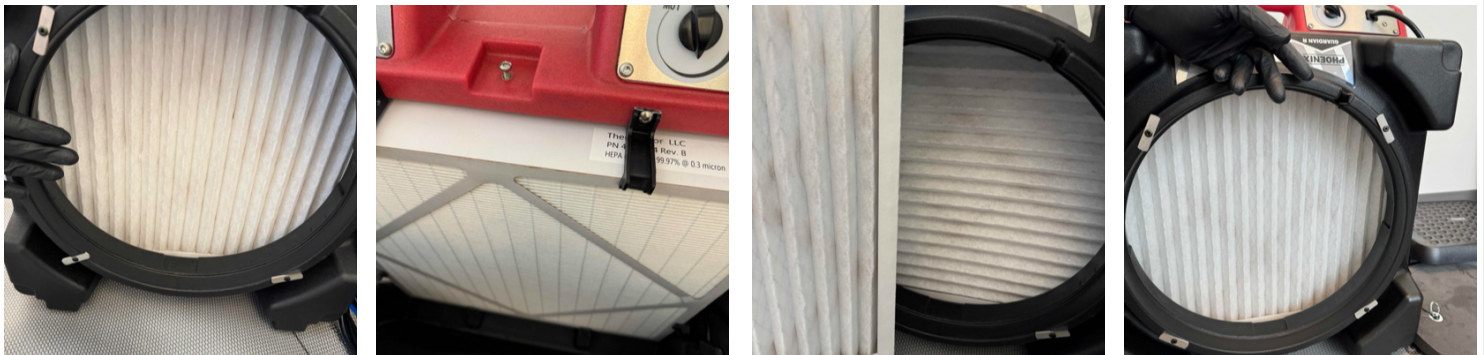


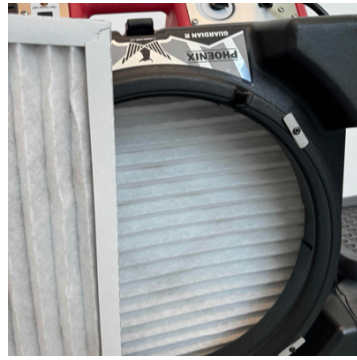
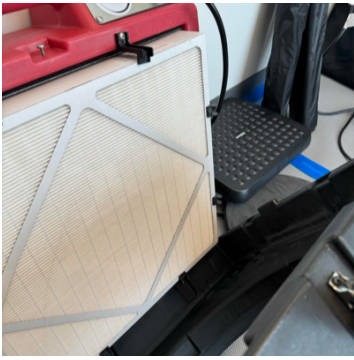
8. 311 Local History: Equipment

2 - Air Scrubbers



9. 311 Local History: Filter Change



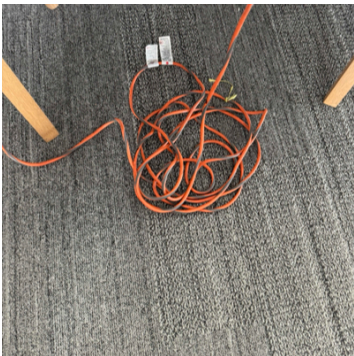


10. 311 Local History: Temperature and Humidity

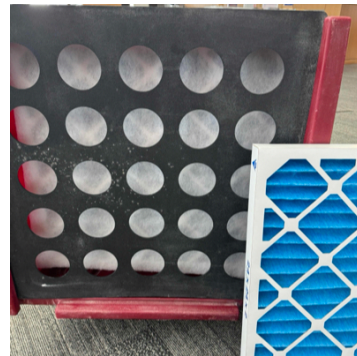
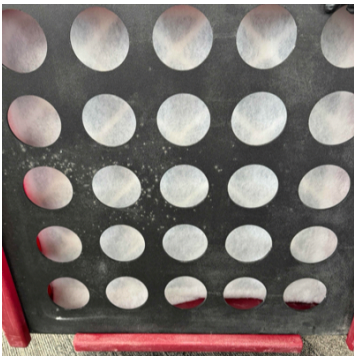


11. Third Floor - Main Area: Equipment

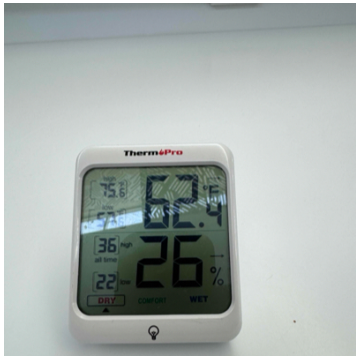
- 1 - Air Scrubber
- 1 - 50' Extension Cord



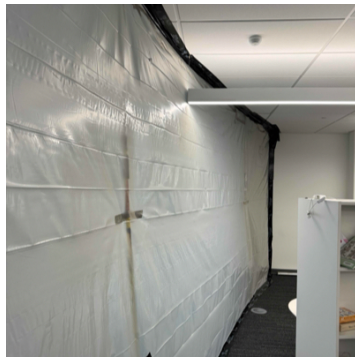
12. Third Floor - Main Area: Filter Change



13. Third Floor - Main Area: Temperature and Humidity

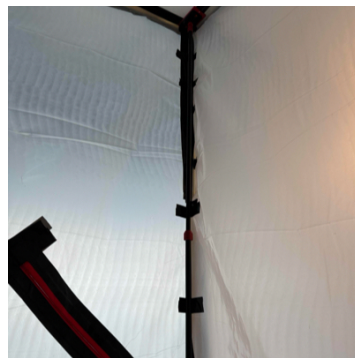


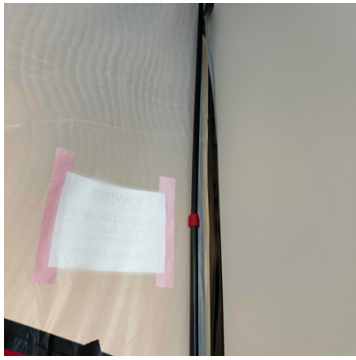
14. 201A Staff Only: Containment Upon Arrival/Departure:



15. 201A Staff Only: Equipment

10 - Zip Post



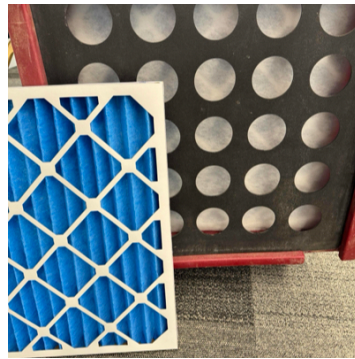
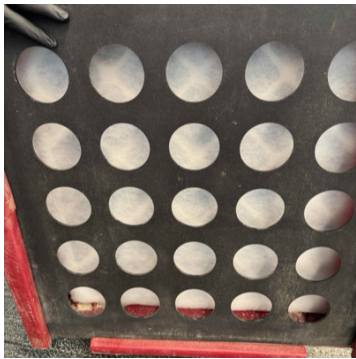


16. Second Floor - Main Area: Equipment

- 1 - Air Scrubber
- 1 - 25' Extension Cord



17. Second Floor - Main Area: Filter Change



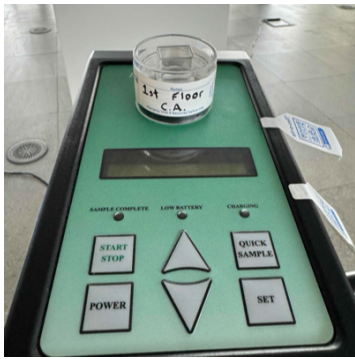
18. Second Floor - Main Area: Temperature and Humidity



19. First Floor - Children's Area: Air Quality Testing



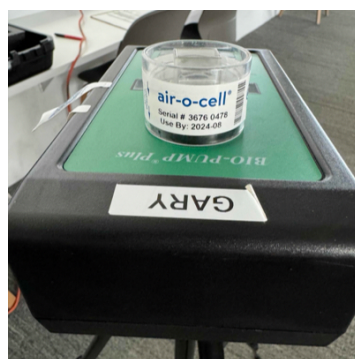
20. First Floor - Common Area: Air Quality Testing



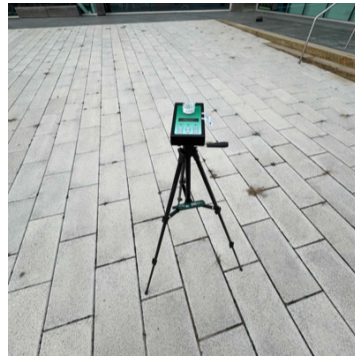
21. Second Floor - Common Area: Air Quality Testing



22. Third Floor - Common Area: Air Quality Testing



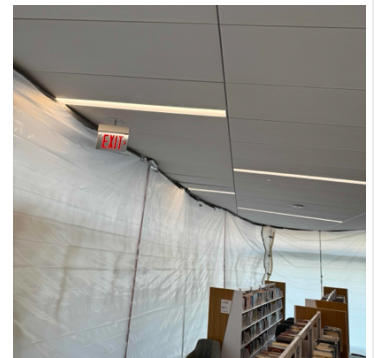
23. Exterior: Air Quality Testing



24. SO 115: Remediation

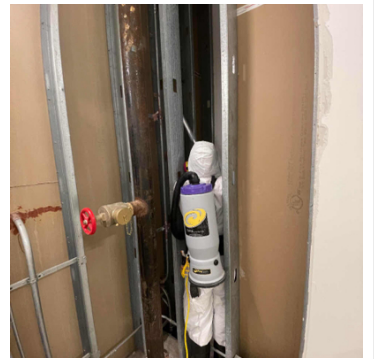


25. Second Floor - Southeast Corner: Containment Upon Arrival/Departure



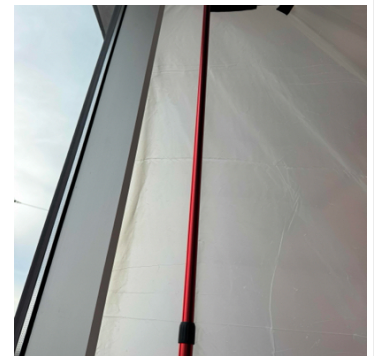


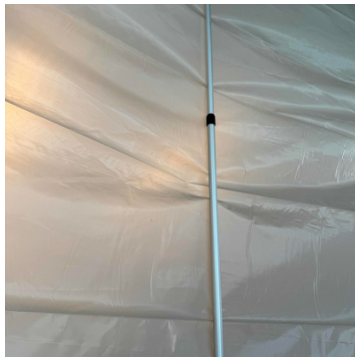
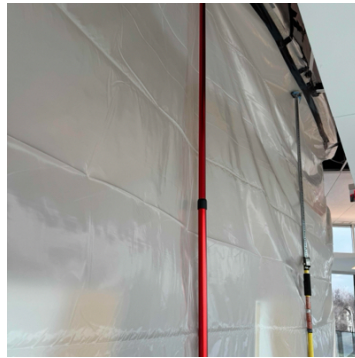
26. Stairwell: Phase 1 Cleaning

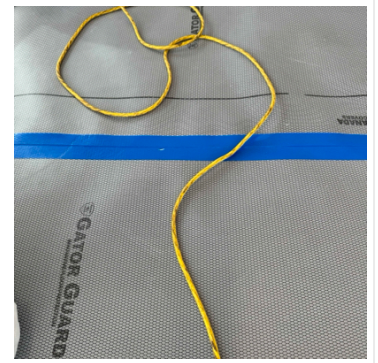
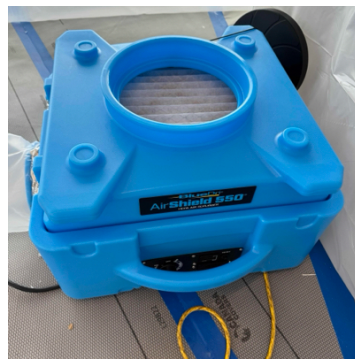


27. Second Floor - Southeast Corner: Equipment

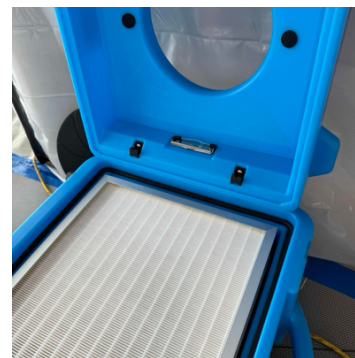
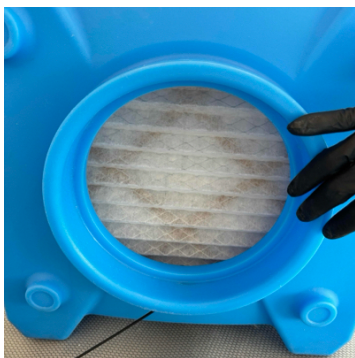
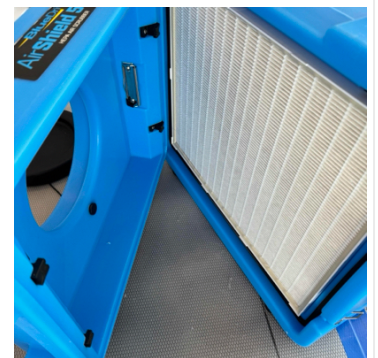
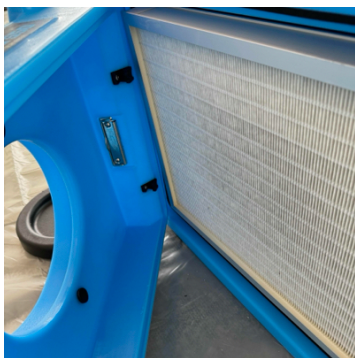
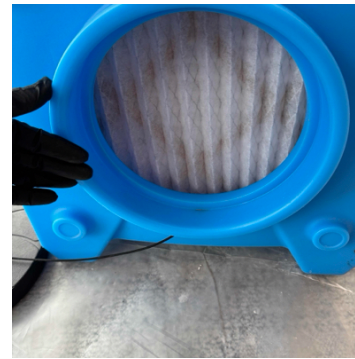
- 22 - Zip Post
- 6 - Air Scrubbers
- 1 - 50' Extension Cord

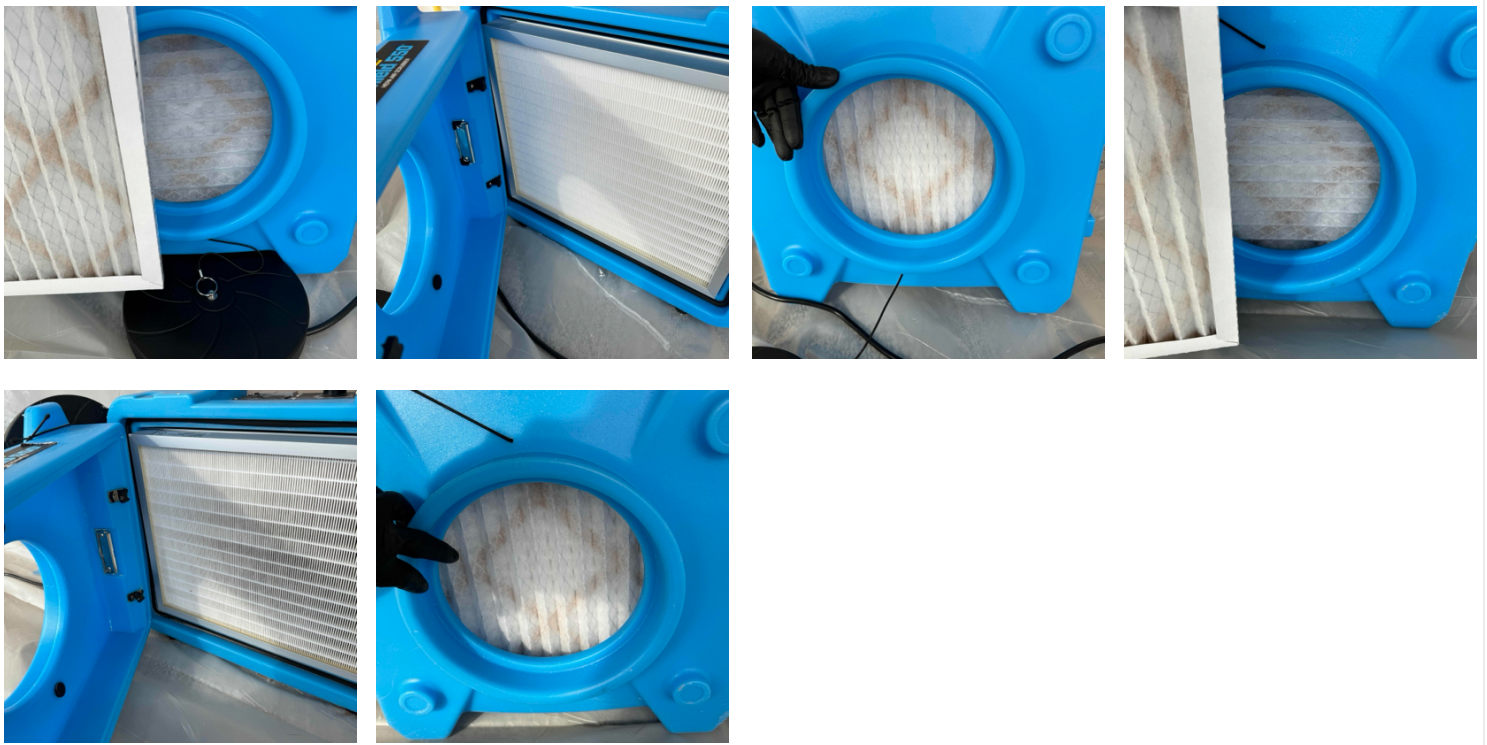






28. Second Floor - Southeast Corner: Filter Change

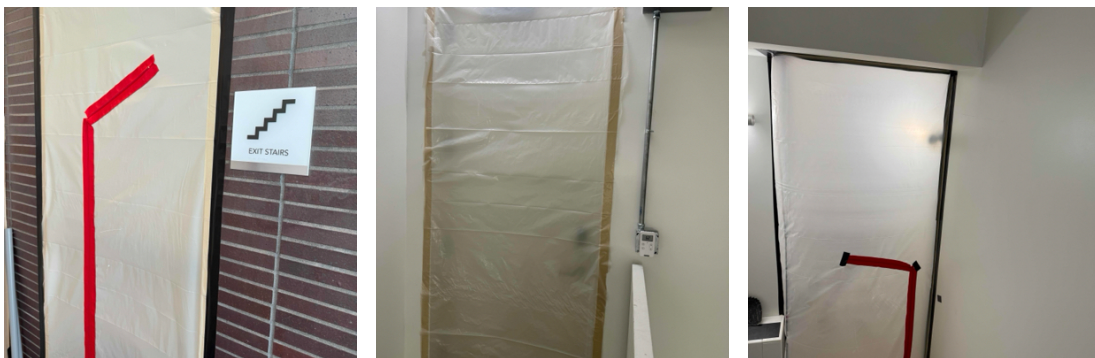




29. Second Floor - Southeast Corner: Temperature and Humidity

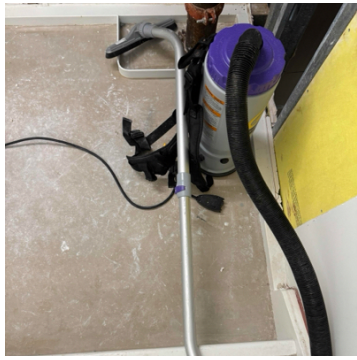
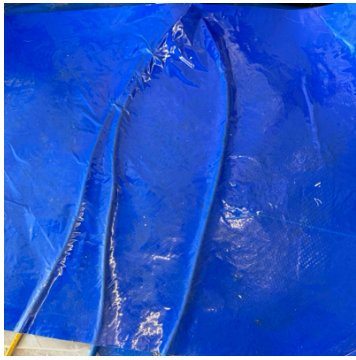


30. Stairwell: Containment Upon Arrival/Departure

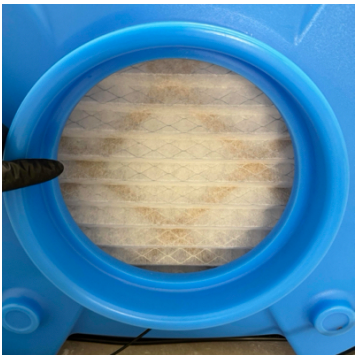
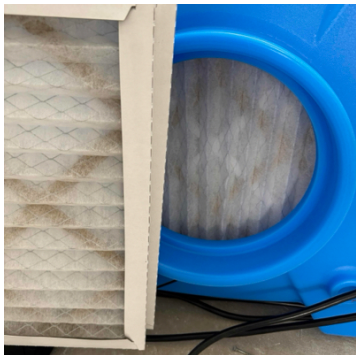


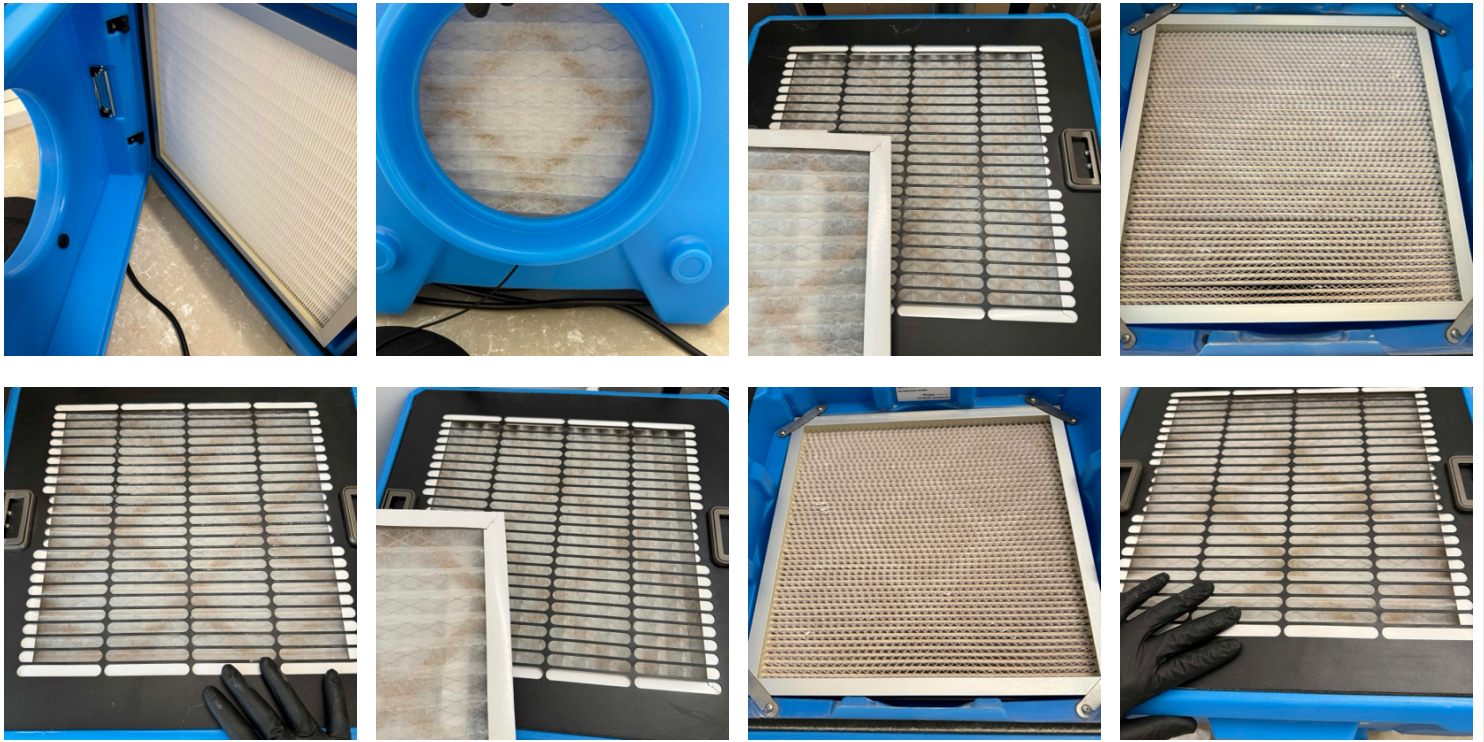
31. Stairwell: Equipment

- 4 - Air Scrubbers
- 2 - Hepa Vacuums
- 3 - 100' Extension Cords
- 2 - 50' Extension Cords



32. Stairwell: Filter Change

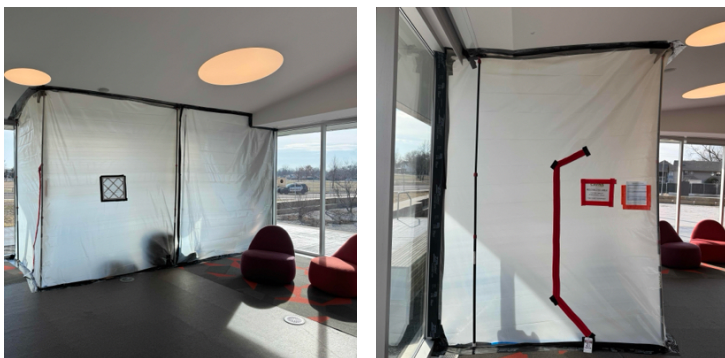




33. Stairwell: Temperature and Humidity



34. 149 Storytime: Containment Upon Arrival/Departure

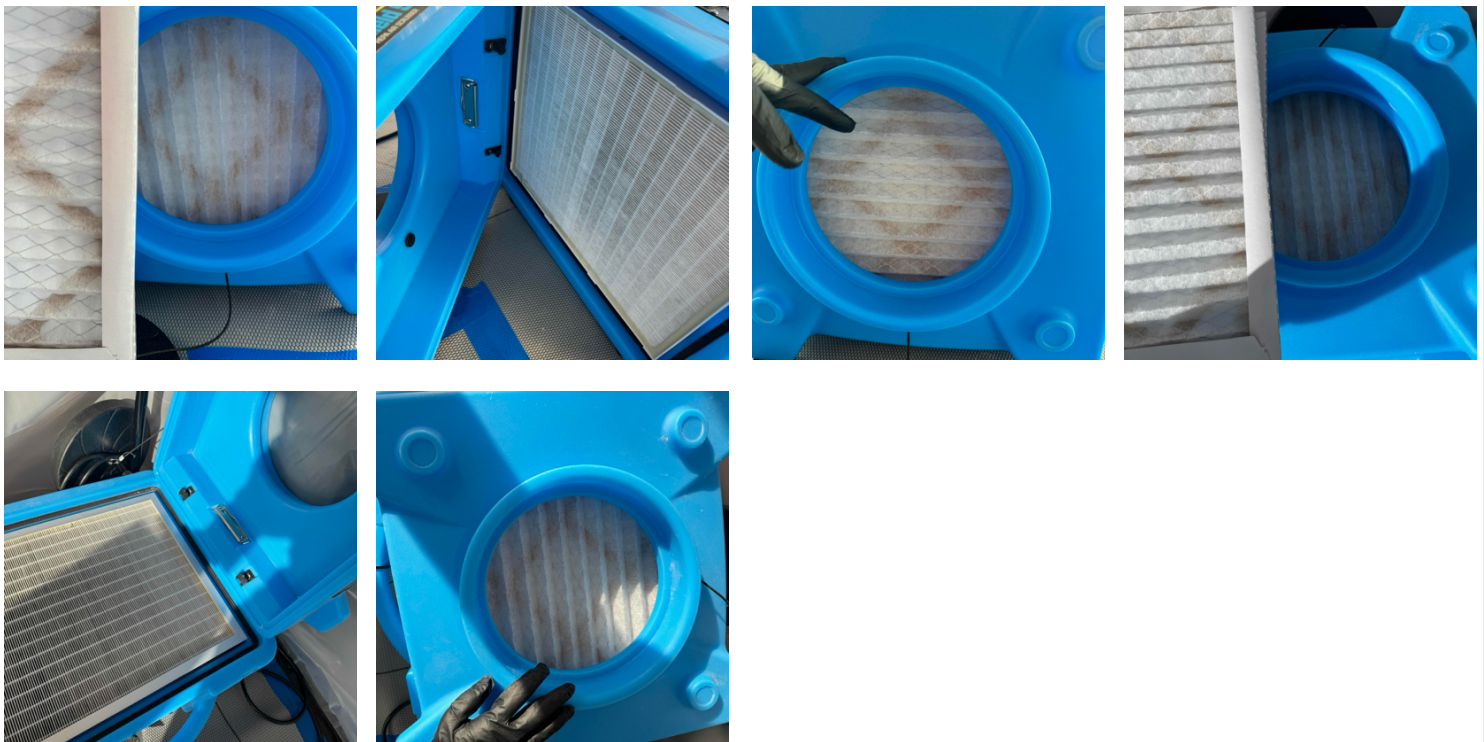


35. 149 Storytime: Equipment

- 5 - Zip Post
- 2 - Air Scrubbers



36. 149 Storytime: Filter Change

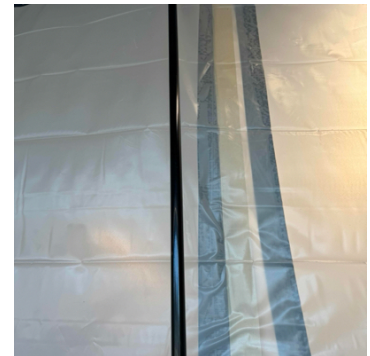
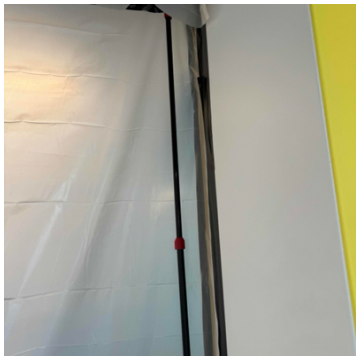


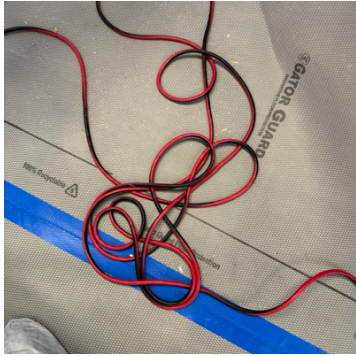
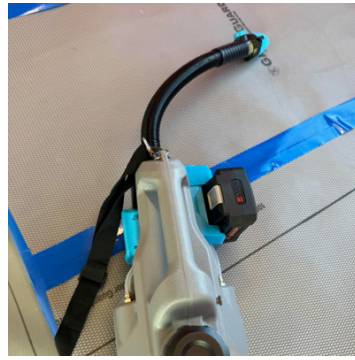
37. First Floor - Bay Windows (Children's Area): Containment Upon Arrival/Departure



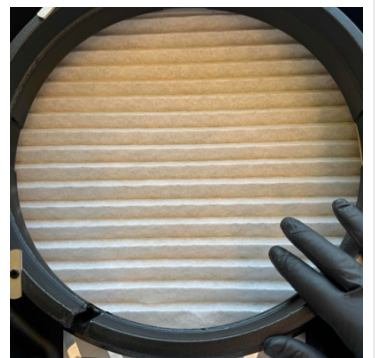
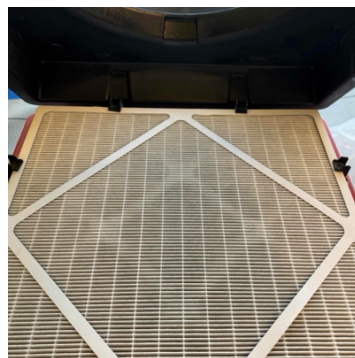
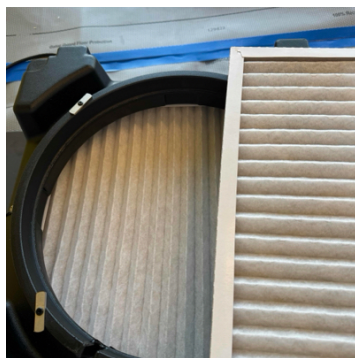
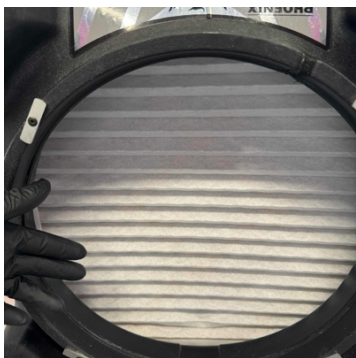
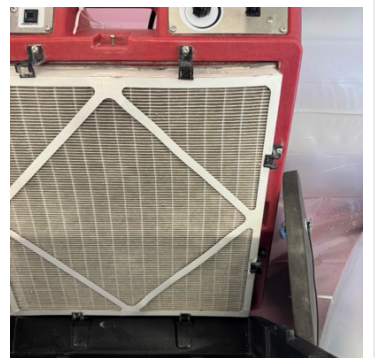
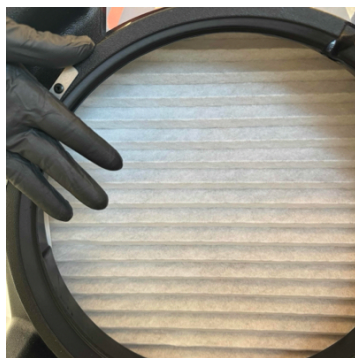
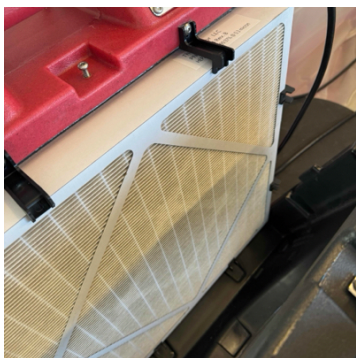
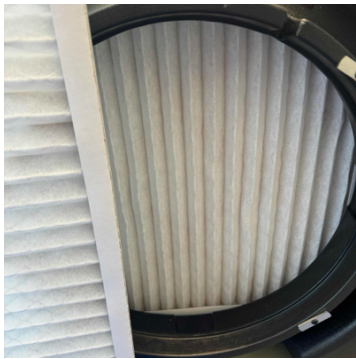
38. First Floor - Bay Windows (Children's Area): Equipment

- 12 - Zip Post
- 4 - Air Scrubbers
- 1 - 50' Extension Cord





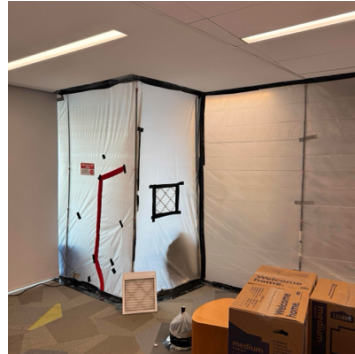
39. First Floor - Bay Windows (Children's Area): Filter Change



40. First Floor - Bay Windows (Children's Area): Temperature and Humidity

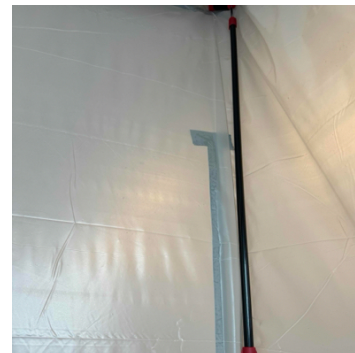


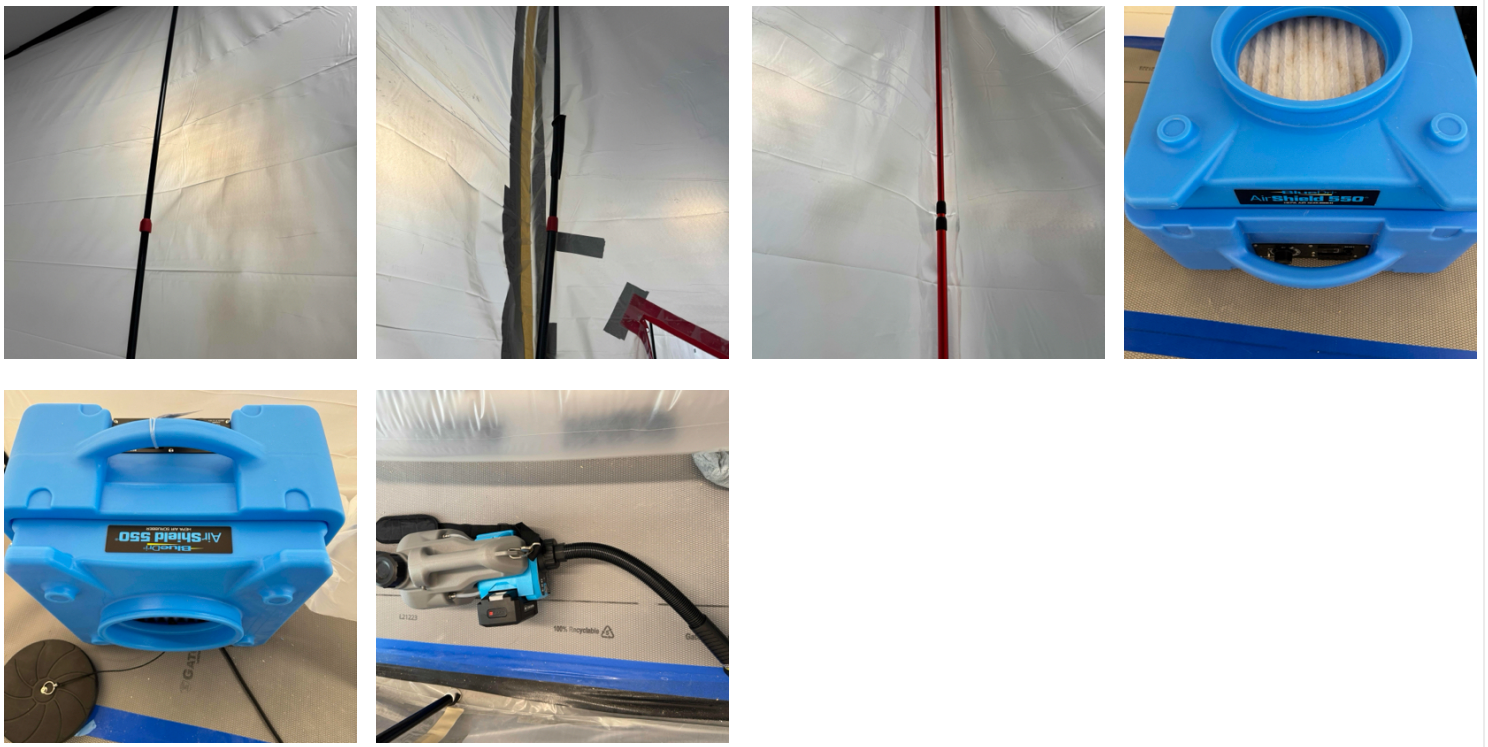
41. Main Entrance - Children's Area: Containment Upon Arrival/Departure



42. Main Entrance - Children's Area: Equipment

- 10 - Zip Post
- 3 - Air Scrubbers





43. Main Entrance - Children's Area: Filter Change



44. Main Entrance - Children's Area: Temperature and Humidity



45. First Floor - Southwest Vestibule: Containment Upon Arrival/Departure

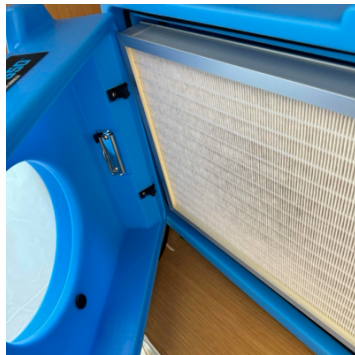


46. First Floor - Southwest Vestibule: Equipment

- 2 - Zip Post
- 2 - Air Scrubbers



47. First Floor - Southwest Vestibule: Filter Change





48. First Floor - Southwest Vestibule: Temperature and Humidity



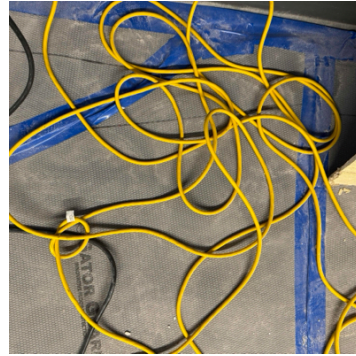
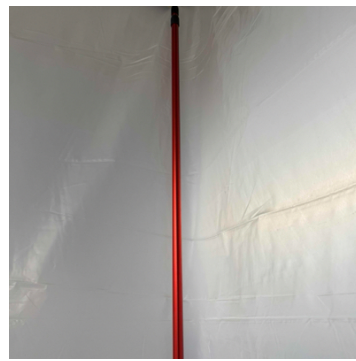
49. SO 115: Containment Upon Arrival/Departure



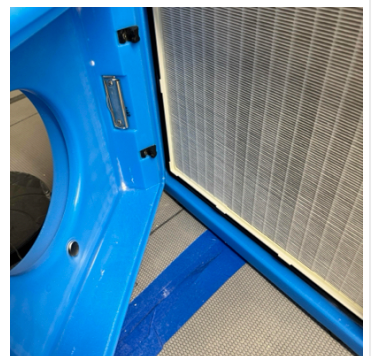
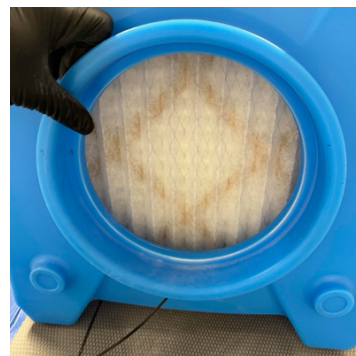
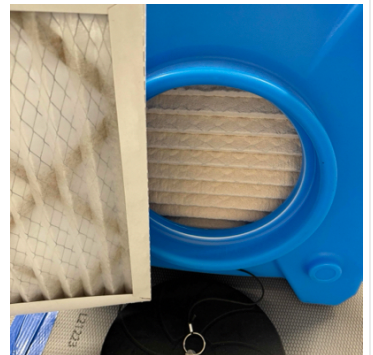
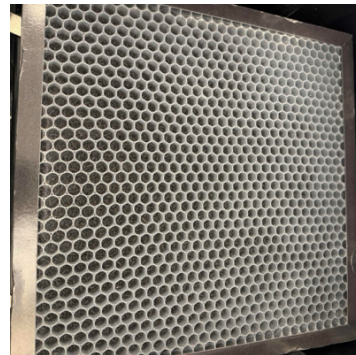
50. SO 115: Equipment

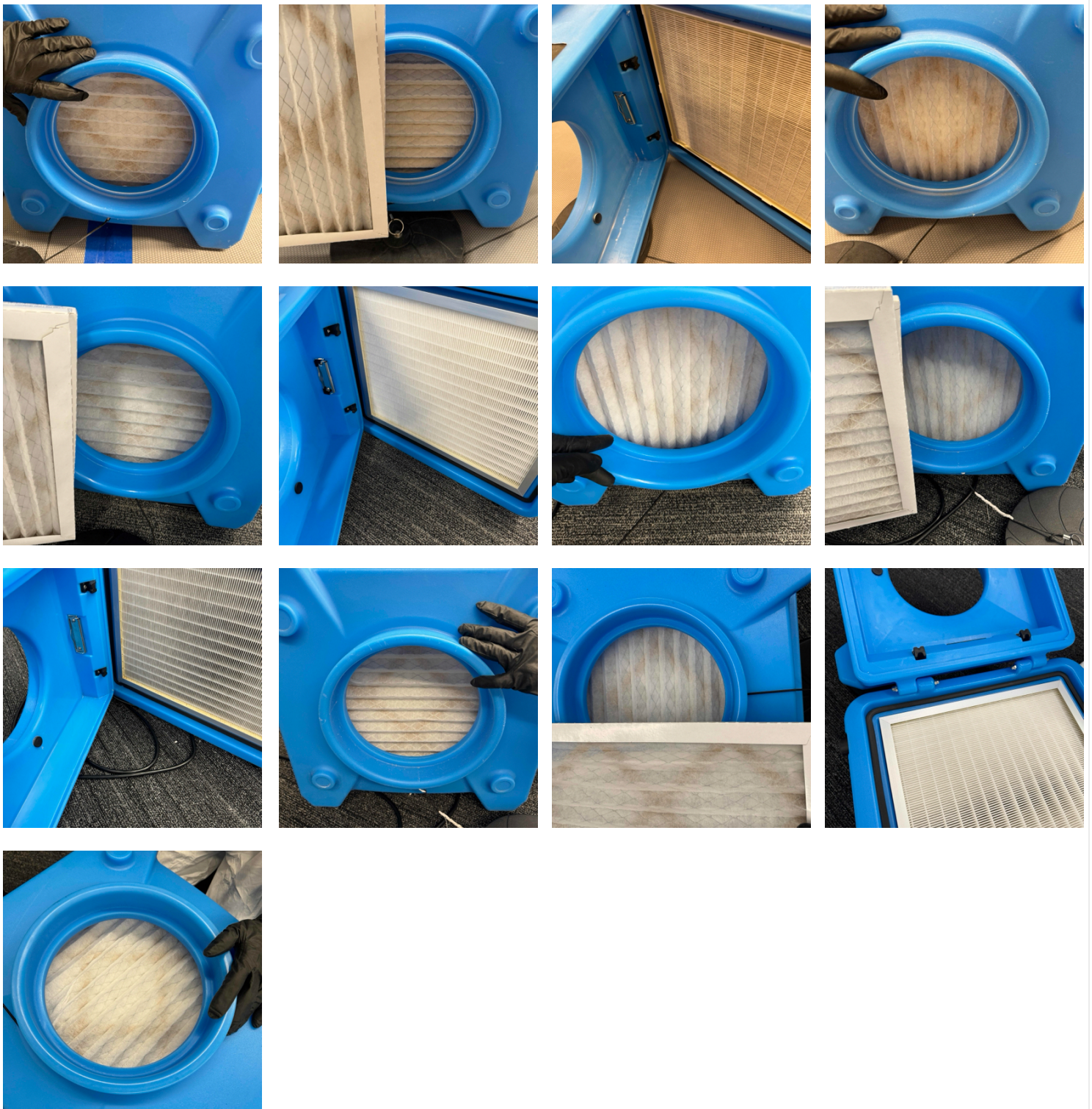
- 4 - Zip Post
- 7 - Air Scrubbers
- 1 - Hepa Vacuum
- 1 - Fogger
- 1 - 50' Extension Cord





51. SO 115: Filter Change





52. SO 115: Temperature and Humidity

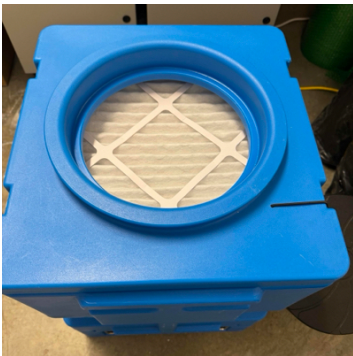


53. Garage: Containment Upon Arrival/Departure

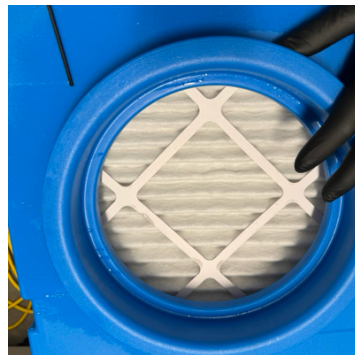


54. Garage: Equipment

- 4 - Air Scrubbers
- 2 - 50' Extension Cords
- 1 - 25' Extension Cord
- 1 - Fogger



55. Garage: Filter Change





56. Garage: Temperature and Humidity



57. Overall: Equipment

- 72 - Zip Post
- 38 - Air Scrubbers
- 3 - Hepa Vacuums
- 3 - Foggers
- 8 - 50' Extension Cords
- 3 - 100' Extension Cords
- 2 - 25' Extension Cords

58. So 115: Water Trails

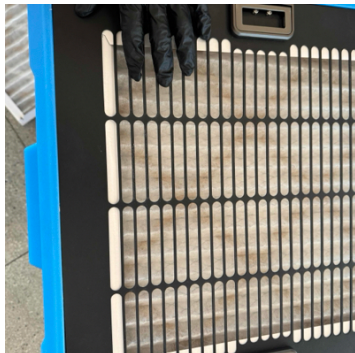
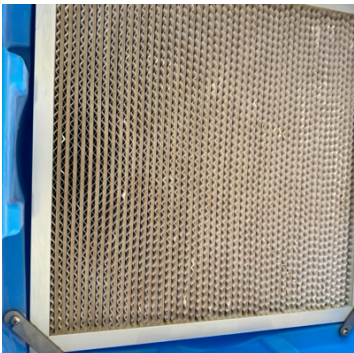
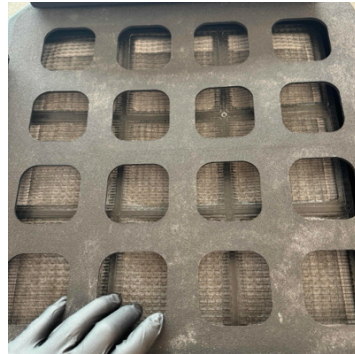
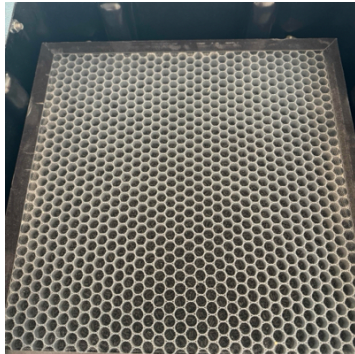


59. First Floor - Main Area: Equipment

2 - Air Scrubbers



60. First Floor - Main Area: Filter Change



61. First Floor - Main Area: Temperature and Humidity



62. Exterior: Temperature and Humidity at Testing



63. First Floor - Common Area: Temperature and Humidity at Testing



64. Second Floor - Main Area: Temperature and Humidity at Testing



65. Third Floor - Common Area: Temperature and Humidity at Testing



66. First Floor - Children's Area: Temperature and Humidity at Testing

