

# Norman Public Library Central - Mold

103 W Acres St Norman, OK 73069



Date Thu 01/11/2024

Job #

## Weather

6:00 AM

37° 

Clear

Wind: 5 MPH | Precipitation: .0" | Humidity: 51%

12:00 PM

54° 

Clear

Wind: 19 MPH | Precipitation: .0" | Humidity: 40%

4:00 PM

66° 

Clear

Wind: 18 MPH | Precipitation: .0" | Humidity: 23%

## Work Logs

| Name                                  | Description  |
|---------------------------------------|--|
| City of Norman Central Library - Mold | Cavins Group arrived on site and suited up in proper PPE. Upon suiting up, Cavins technicians checked all containments and equipment for defects. All air scrubber filters were changed, temperature and humidity readings were taken in all containments, all three floors in the main area, and one exterior reading. Phase 2 cleaning is ongoing in SO 115. Investigative demo was performed in room 311. |
| Total                                 |  |

## General Notes

### 1. First Floor - Main Area: Filter Change



### 2. First Floor - Main Area: Temperature and Humidity



### 3. First Floor - Main Area: Equipment

#### 2 - Air Scrubbers



### 4. Third Floor - Main Area: Filters



### 5. Third Floor - Main Area: Temperature and Humidity



### 6. Third Floor - Main Area: Equipment

- 2 - Air Scrubbers
- 1 - 50' Extension Cord



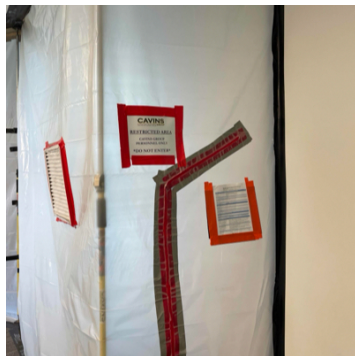


**7. 303 Storage: Equipment**

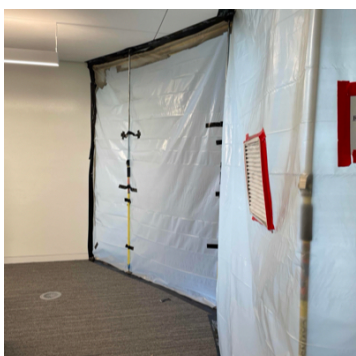
2 - Zip Post



**8. 303 Storage: Containment Upon Arrival/Departure**

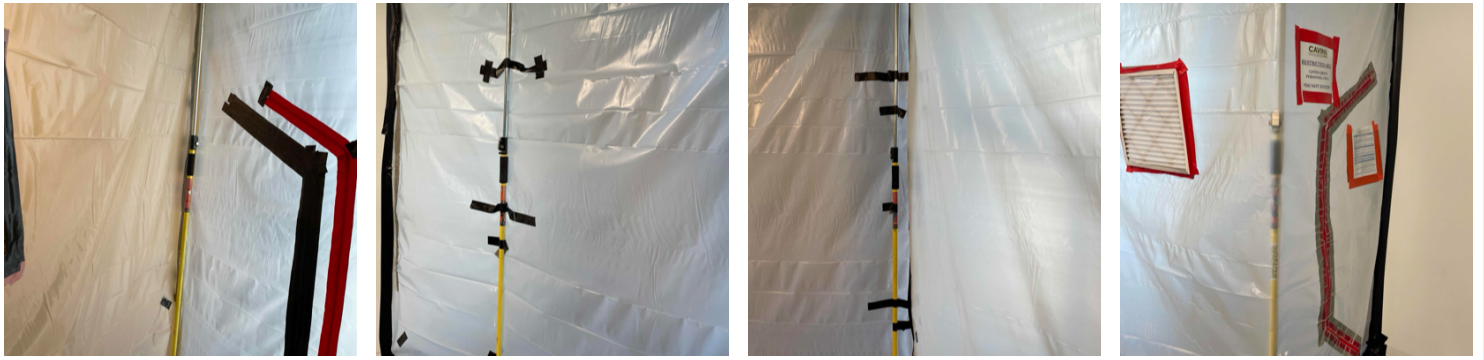


**9. 305 Pioneer: Containment Upon Arrival/Departure**



**10. 305 Pioneer Equipment:**

4 - Zip Post



### 11. Second Floor - Main Area: Equipment

- 2 - Air Scrubbers
- 1 - 25' Extension Cord



### 12. Second Floor - Main Area: Temperature and Humidity



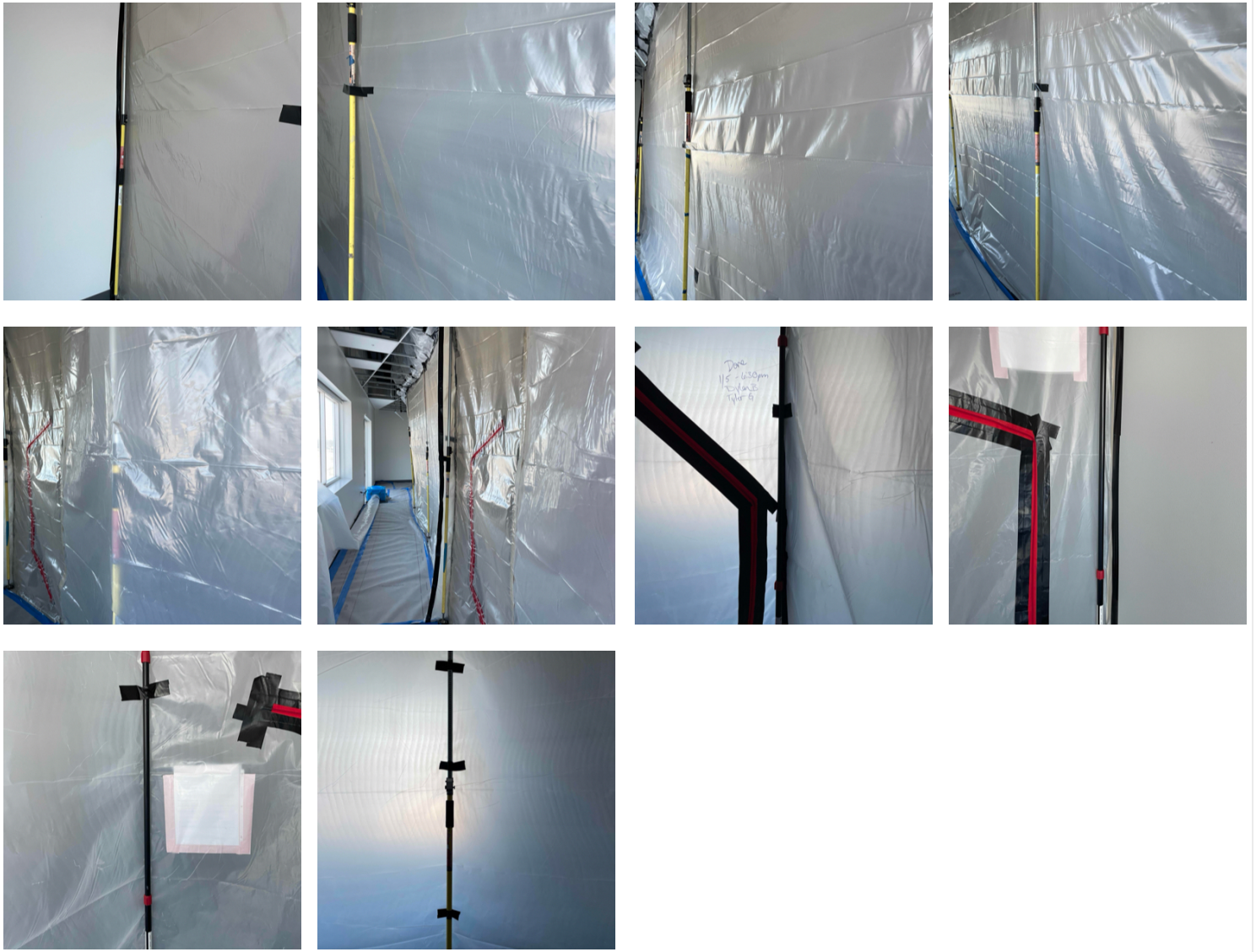
### 13. Second Floor - Main Area: Filters



### 14. 201A Staff Only: Equipment

- 10 - Zip Post





15. 201A Staff Only: Containment Upon Arrival/Departure



16. 201A Staff Only: Temperature and Humidity



17. 149 Storytime: Containment Upon Arrival/Departure



18. 149 Storytime: Equipment

- 5 - Zip Post
- 2 - Air Scrubbers



19. 149 Storytime: Filter Change





**20. 149 Storytime: Temperature and Humidity**



**21. Second Floor - Southeast Corner: Remediation**

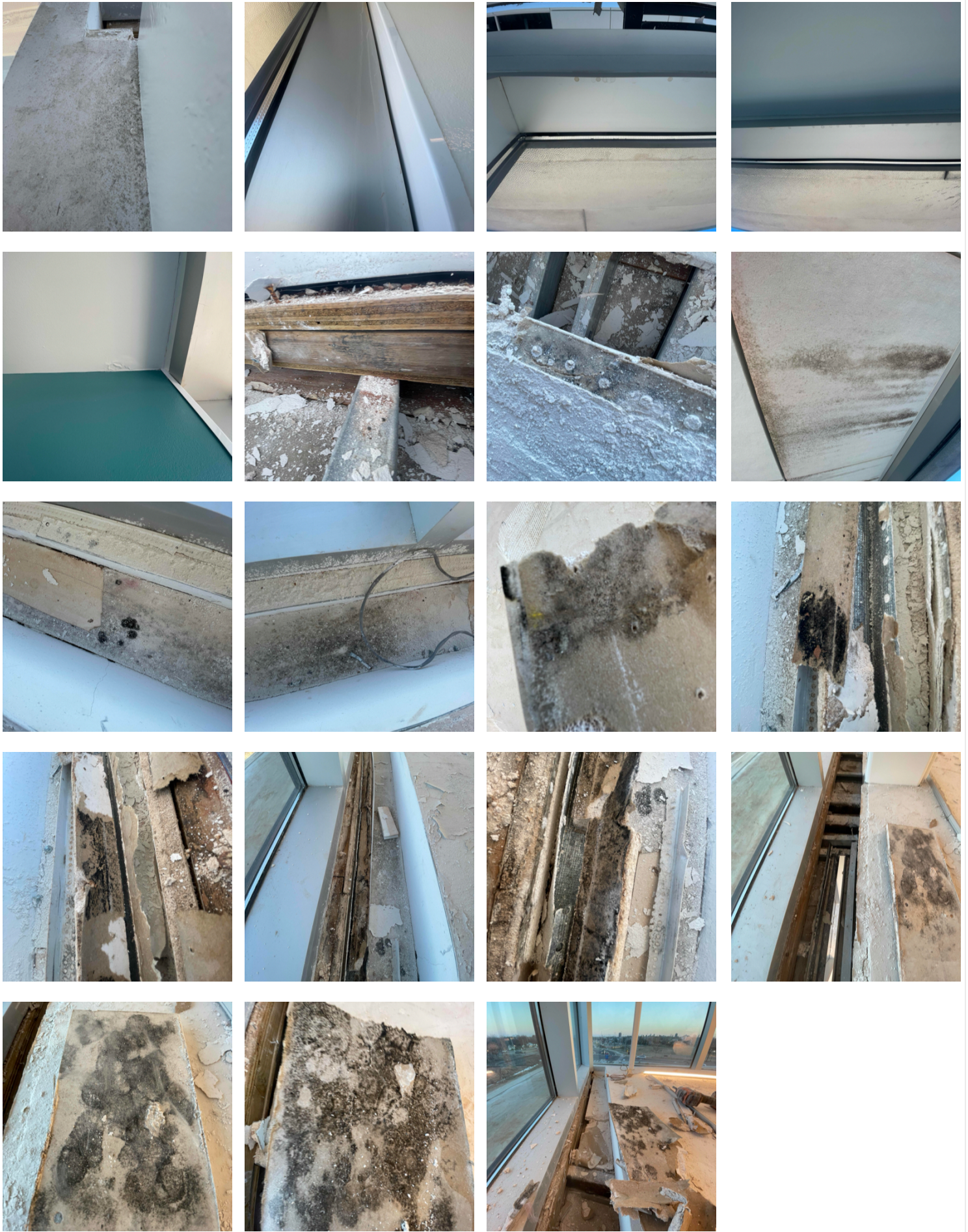
Water damage can be seen on the wall in the middle office, on the east side by the windows. After removing water damaged drywall, visible microbial growth can be seen on the upper left corner. Drywall on the ceiling needs to be removed in order to ensure there is no microbial growth. Visible microbial growth is seen on the back of the ceiling drywall and all affected areas were removed. Microbial growth spreads to the inside of the office ceiling and this was removed as well. On top of soffit (overhang) visible microbial growth can be seen where possible windows/exterior siding has been leaking, demo of affected areas were completed.







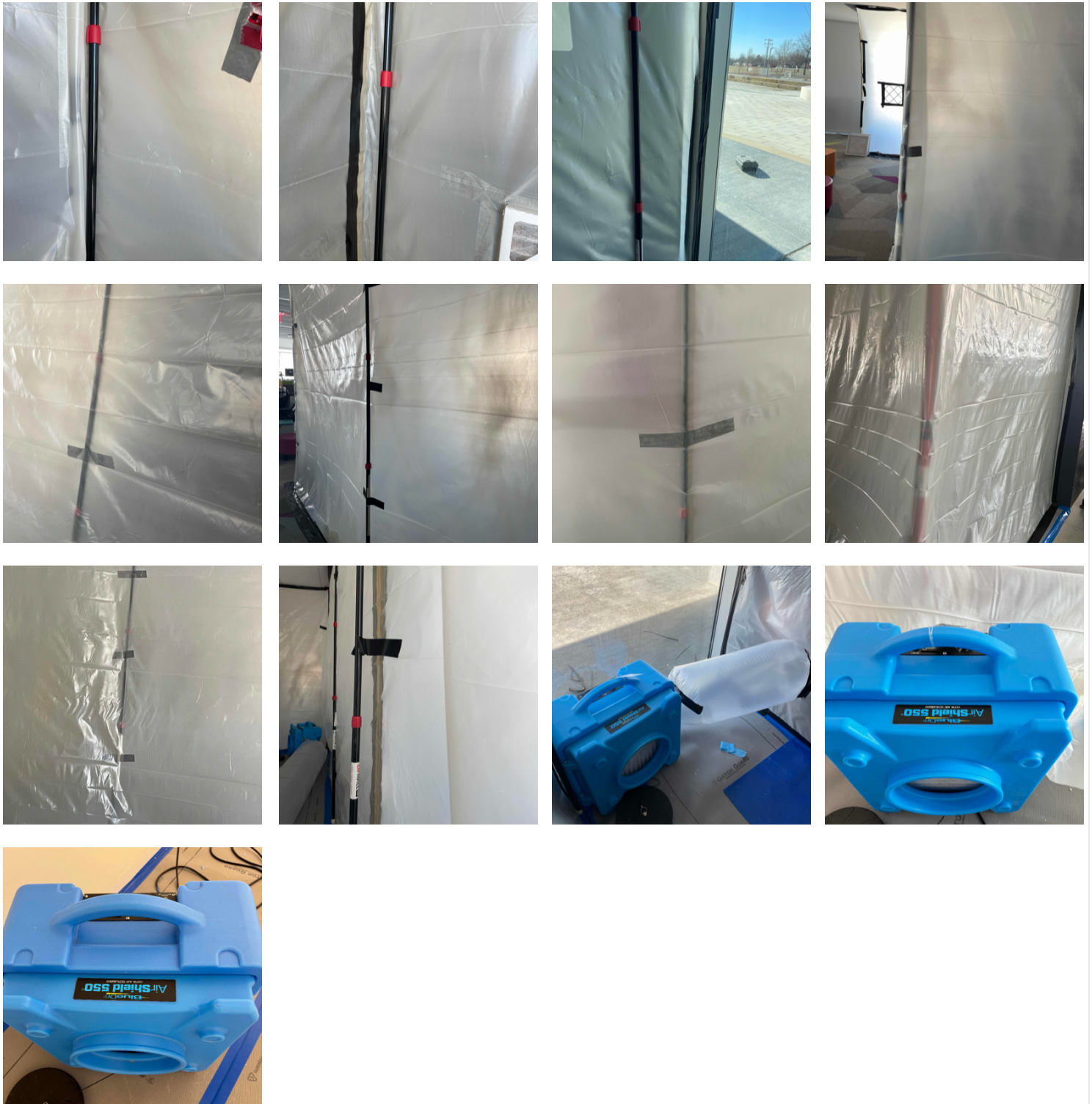




22. Main Entrance- Children's Area: Equipment



10 - Zip Post  
3 - Air Scrubbers

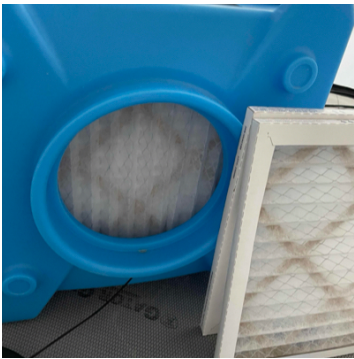
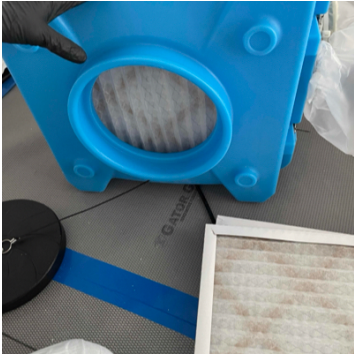


23. Main Entrance - Children's Area: Containment Upon Arrival/Departure





**24. Main Entrance - Children's Area: Filter Change**



**25. Main Entrance - Children's Area: Temperature and Humidity**



**26. First Floor - Southwest Vestibule: Containment Upon Arrival/Departure**



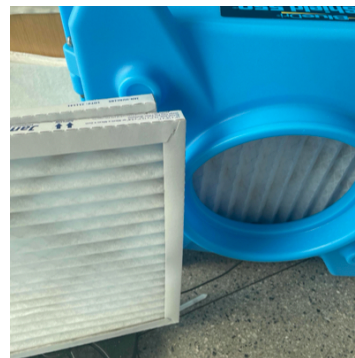


**27. First Floor - Southwest Vestibule: Equipment**

- 2 - Zip Post
- 2 - Air Scrubbers



**28. First Floor - Southwest Vestibule: Filter Change**



**29. First Floor - Southwest Vestibule: Temperature and Humidity**



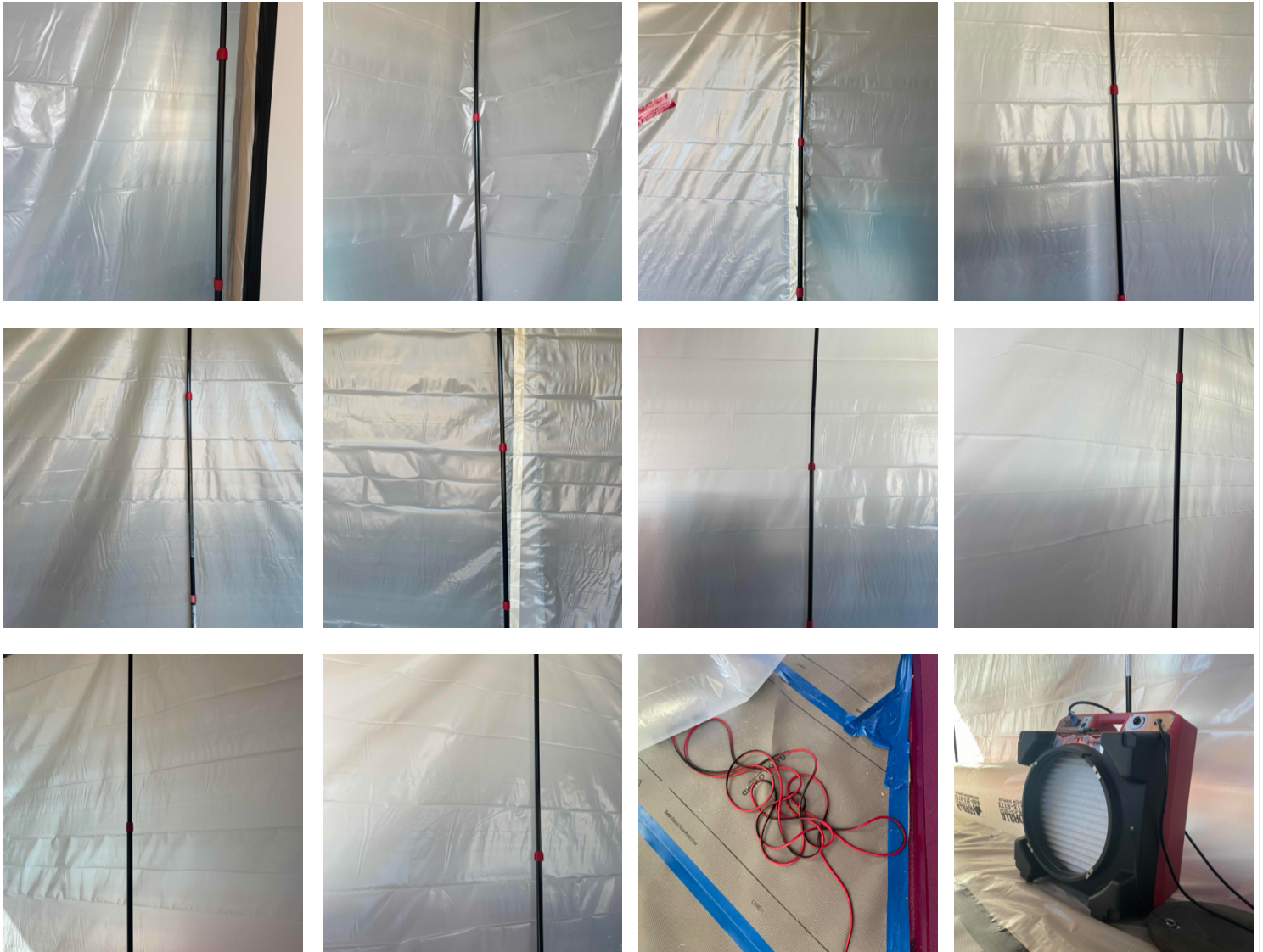
**30. First Floor - Bay Windows (Children's Area): Containment Upon Arrival/Departure**



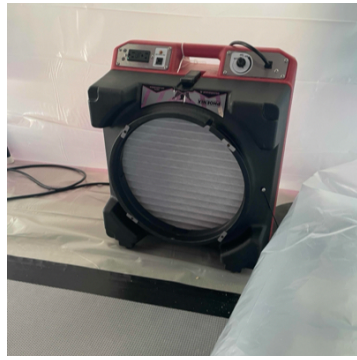


**31. First Floor - Bay Windows (Children's Area): Equipment**

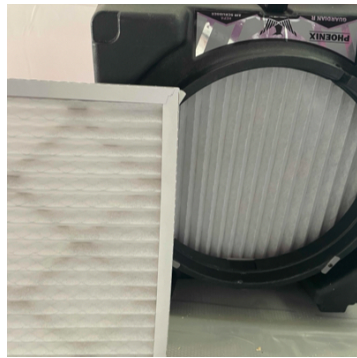
- 12 - Zip Post
- 4 - Air Scrubbers
- 1 - 50' Extension Cord







32. First Floor - Bay Windows (Children's Area): Filter Change

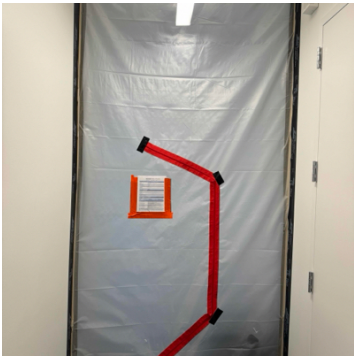




**33. First Floor - Bay Windows (Children's Area): Temperature and Humidity**



**34. 311 Local History: Containment Upon Arrival/Departure**



**35. 311 Local History: Equipment**

- 2 - Air Scrubbers
- 1 - Hepa Vacuum
- 1 - Fogger



**36. 311 Local History: Temperature and Humidity**



**37. Garage: Containment Upon Arrival/Departure**



### 38. Garage: Equipment

- 4 - Air Scrubbers
- 2 - 50' Extension Cords
- 1 - 25' Extension Cord
- 2 - Foggers



### 39. Garage: Filter Change

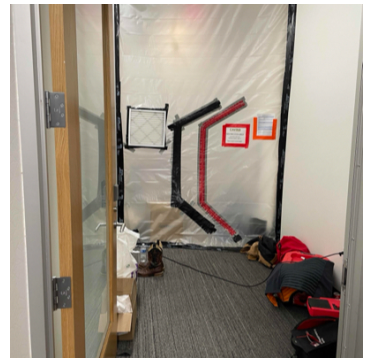
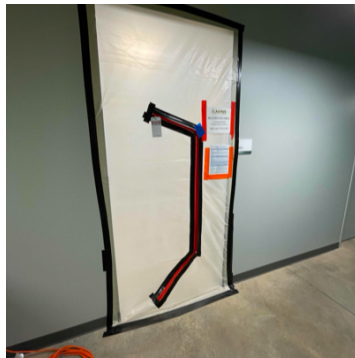




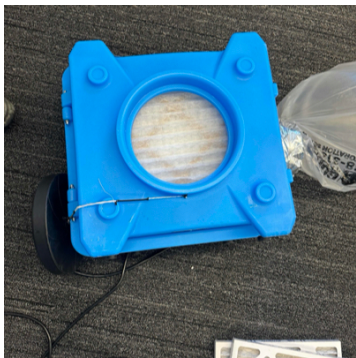
**40. Garage: Temperature and Humidity**



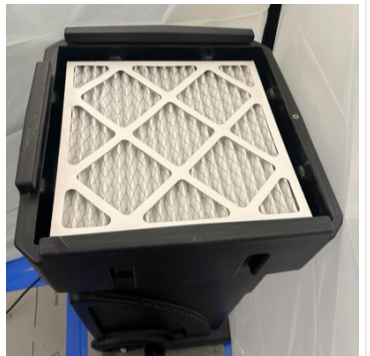
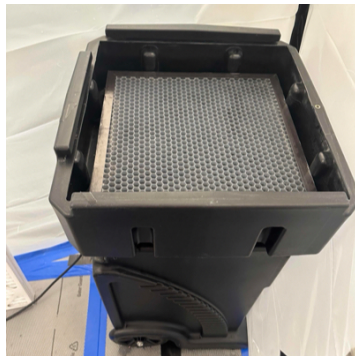
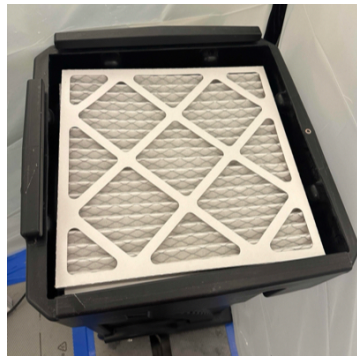
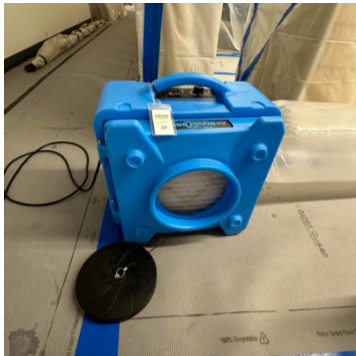
**41. SO 115: Containment Upon Arrival/Departure**



**42. SO 115: Filter Change**











**43.** SO 115: Phase 2 cleaning  
Hepa vacuum ceiling, walls, & floors.  
Wipe ceiling, walls, & floors



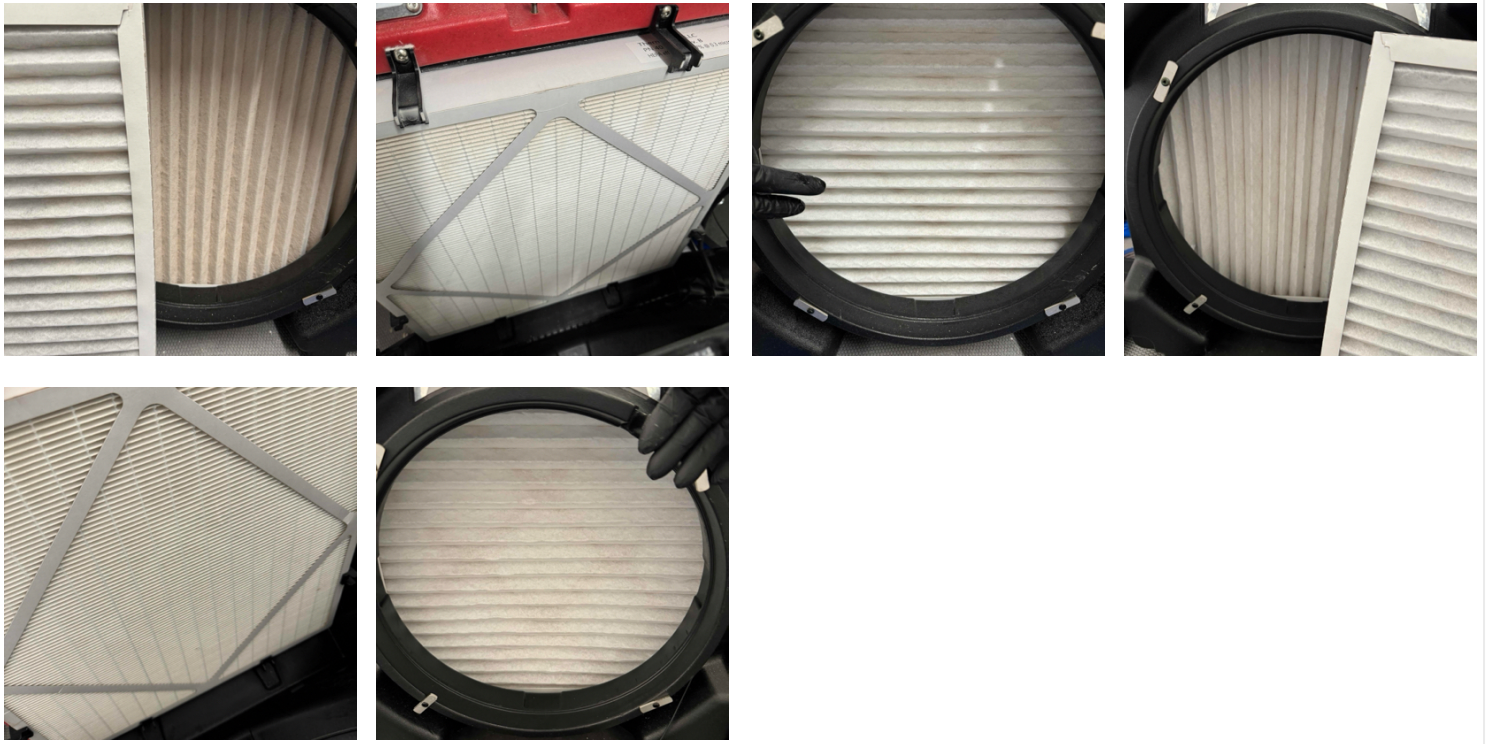
**44.** SO 115: equipment  
9 - Air Scrubbers  
5 - Hepa Vacuums  
8 - 50' Extension Cords  
1 - Fogger





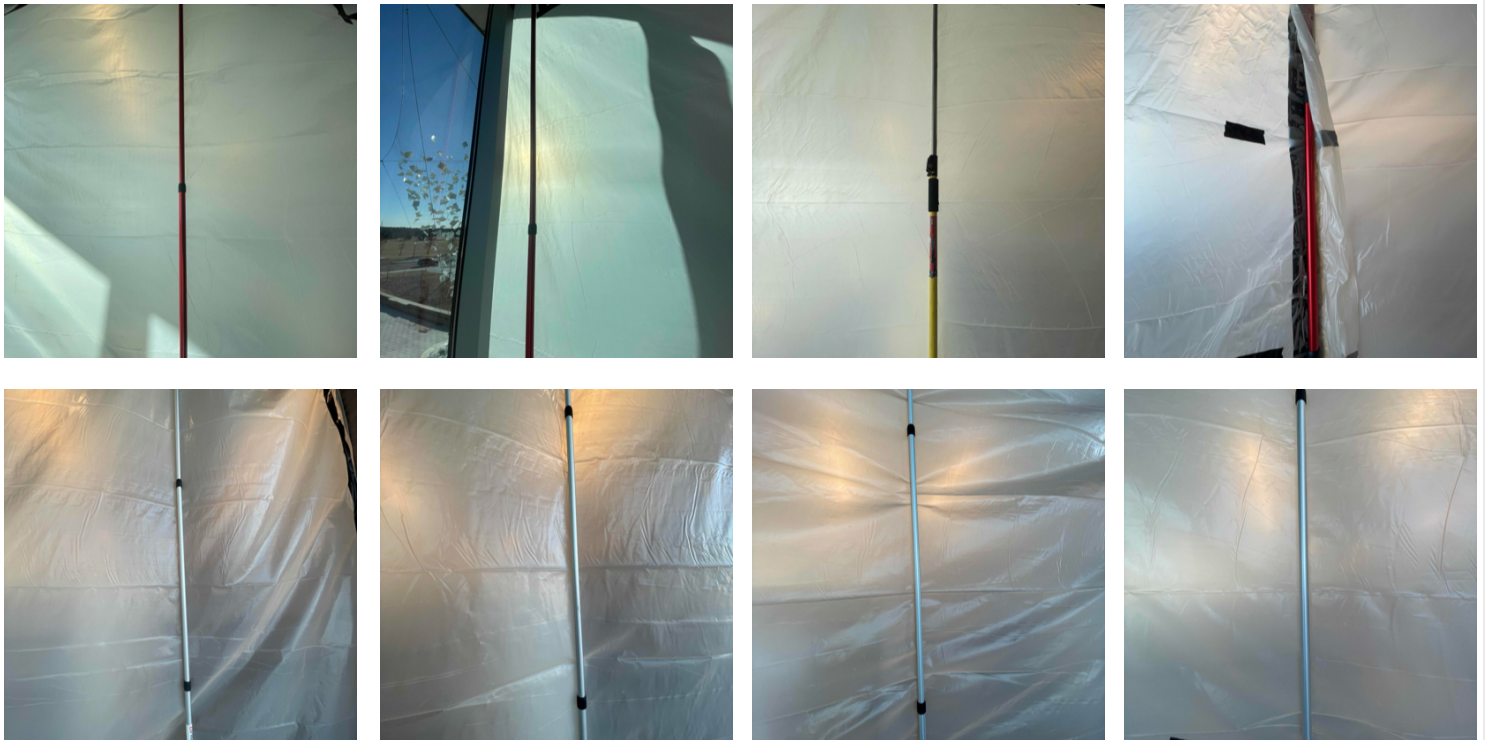
45. 311 Local History: Filter Change



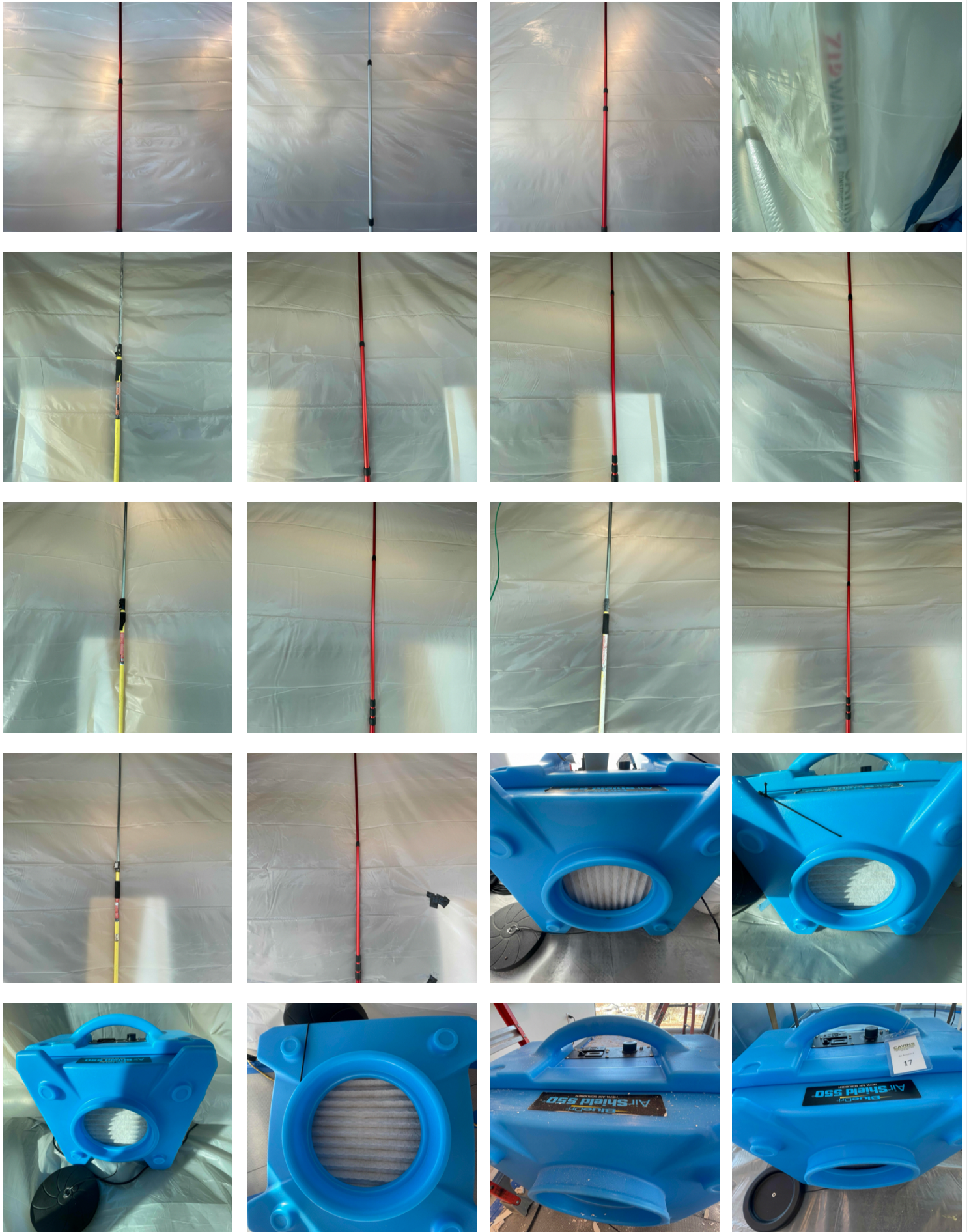


**46. Second Floor - Southeast Corner: Equipment**

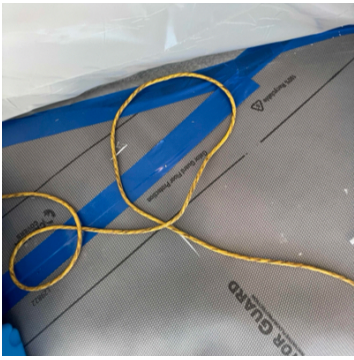
- 22 - Zip Post
- 6 - Air Scrubbers
- 1 - 50' Extension Cord











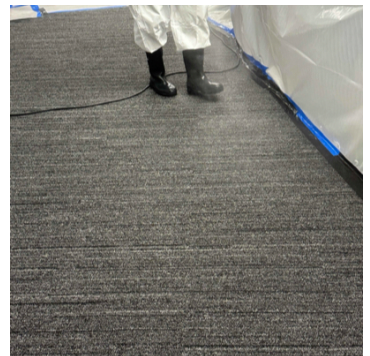
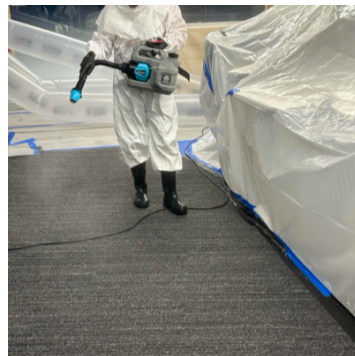
47. Second Floor - Southeast Corner: Temperature And Humidity



48. SO 115: Temperature and Humidity



49. SO 115 Antimicrobial fog treatment





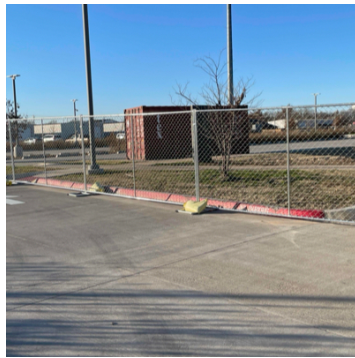
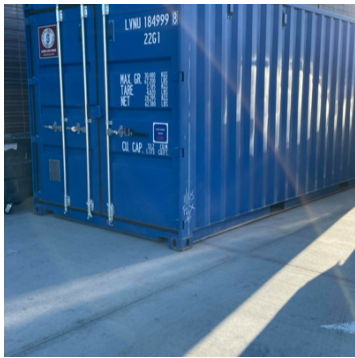


## 50. Overall: Equipment

- 68 - Zip Post
- 41 - Air Scrubbers
- 5 - Hepa Vacuums
- 4 - Foggers
- 13 - 50' Extension Cords
- 3 - 100' Extension Cords
- 2 - 25' Extension Cords

## 51. Exterior: Equipment

- 2 - 20' Conex Boxes



## 52. Exterior: Temperature and Humidity



## 53. Water trails - Second floor Southeast Corner

Water marks can be seen on drywall above the support beam in the drop down ceiling from the second floor, inside the soffit area. Seems to be under the floor on the 3rd floor, east side under windows,.





**54. Second Floor - Southeast Corner: Containment Upon Arrival/Departure**



**55. Second Floor - Southeast Corner: Filter Change**







**56. Stairwell: Equipment**

- 4 - Air Scrubbers
- 3 - 100' Extension Cords
- 1 - Hepa Vac
- 1 - Zip Post







**57. Stairwell: Containment Upon Arrival/Departure**



**58. 311 Local History: Selective demo for water intrusion investigation. Water intrusion appears to be from a former roof leak that may have already been repaired.**

