

Date Fri 01/19/2024

Job #

Weather

6:00 AM

13° 

Clear

Wind: 19 MPH | Precipitation: .0" | Humidity: 57%

12:00 PM

20° 

Partially cloudy

Wind: 15 MPH | Precipitation: .0" | Humidity: 38%

4:00 PM

25° 

Clear

Wind: 14 MPH | Precipitation: .0" | Humidity: 33%

Work Logs

Name	Description
Cavins Environmental	Cavins Group arrived on site, took temperature and humidity readings of affected areas, main/common areas, and checked the exterior temperature and humidity. Cavins technician suited up in proper PPE and changed pre filters in air scrubbers within containments, along with all all pre filters in main areas. Anti microbial fog treatment was done to areas currently in air scrubbing process. Cleaning Process continued in Stairwell
Total	

General Notes

1. 303 storage: Equipment

2 - Zip Posts



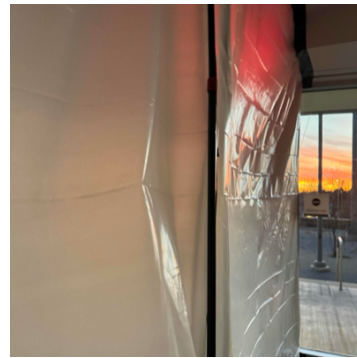
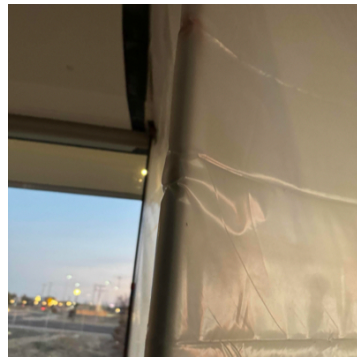
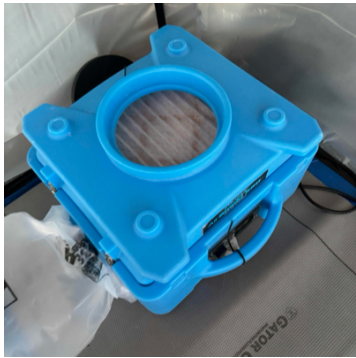
2. 303 storage: Containment Upon Arrival/Departure



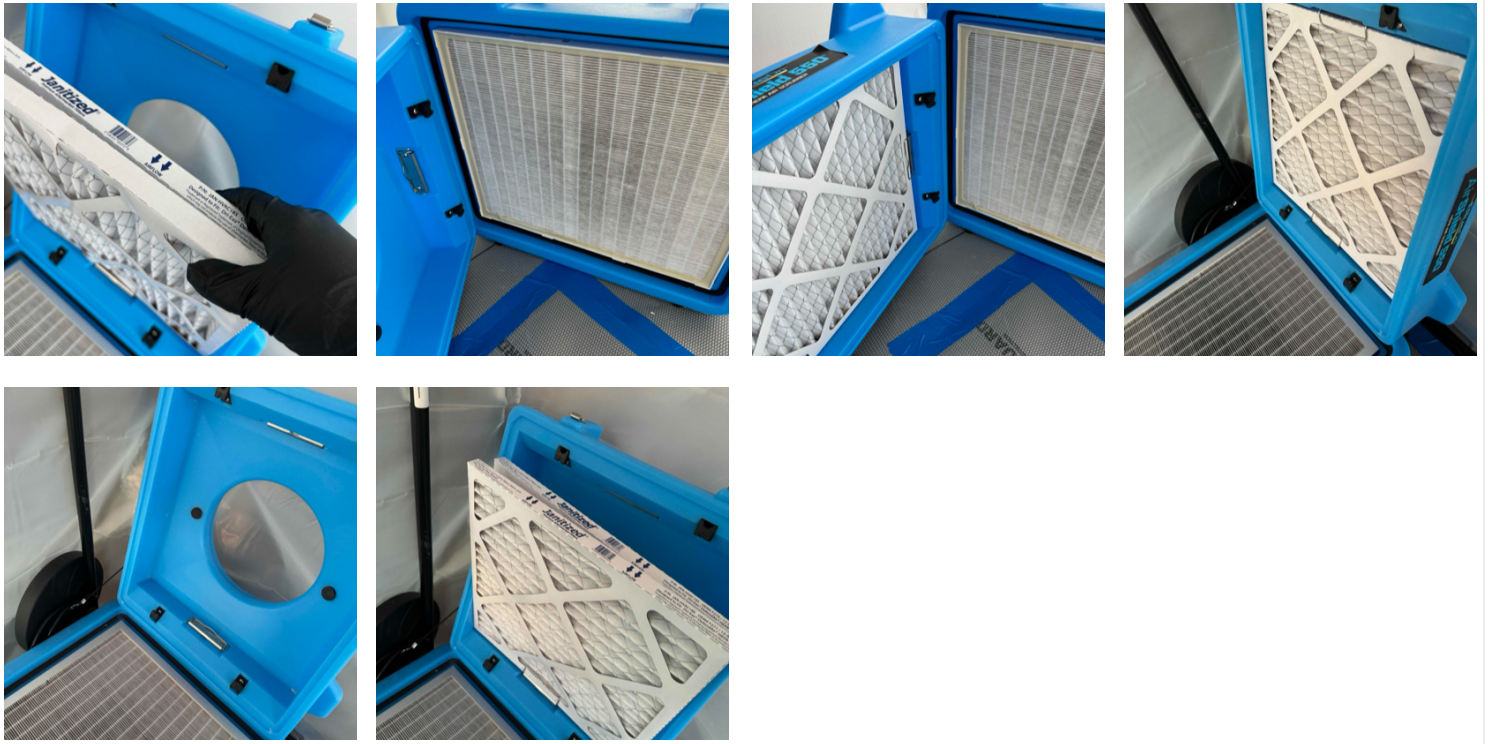
3. 149 Storytime: Containment Upon Arrival/Departure



4. 149 Storytime: Equipment
2 - Air Scrubbers
5 - Zip Posts



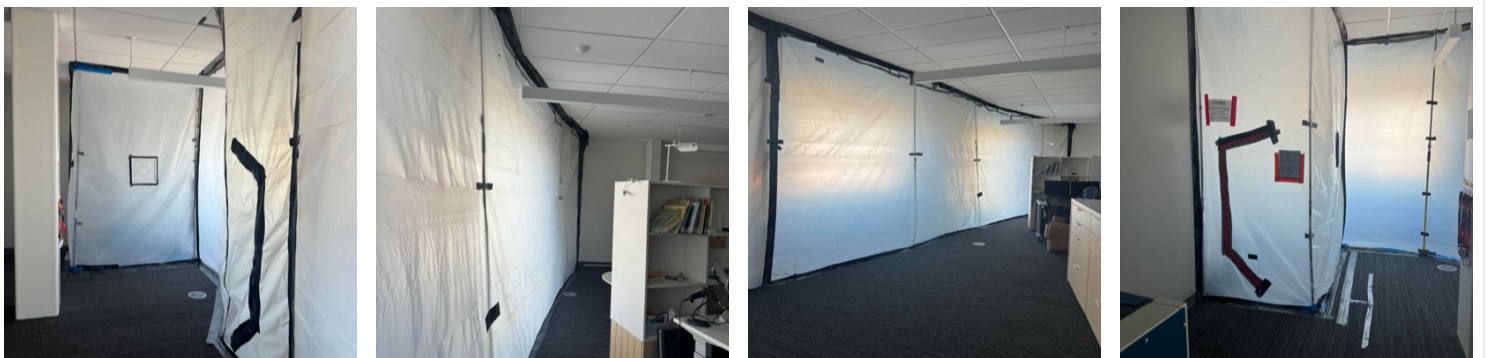
5. 149 Storytime: Filter Change



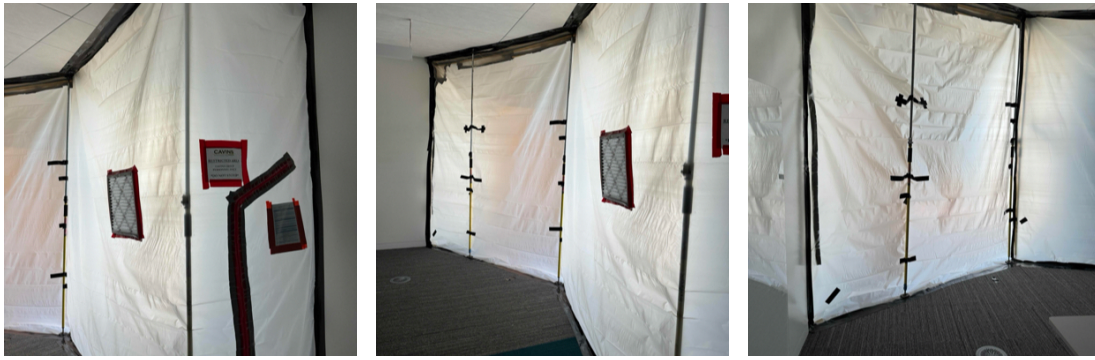
6. 149 Storytime: Temperature and Humidity



7. 201A Staff Only: Containment Upon Arrival/Departure



8. 305 Pioneer: Containment Upon Arrival/Departure



9. 305 Pioneer: Equipment
4 - Zip Posts



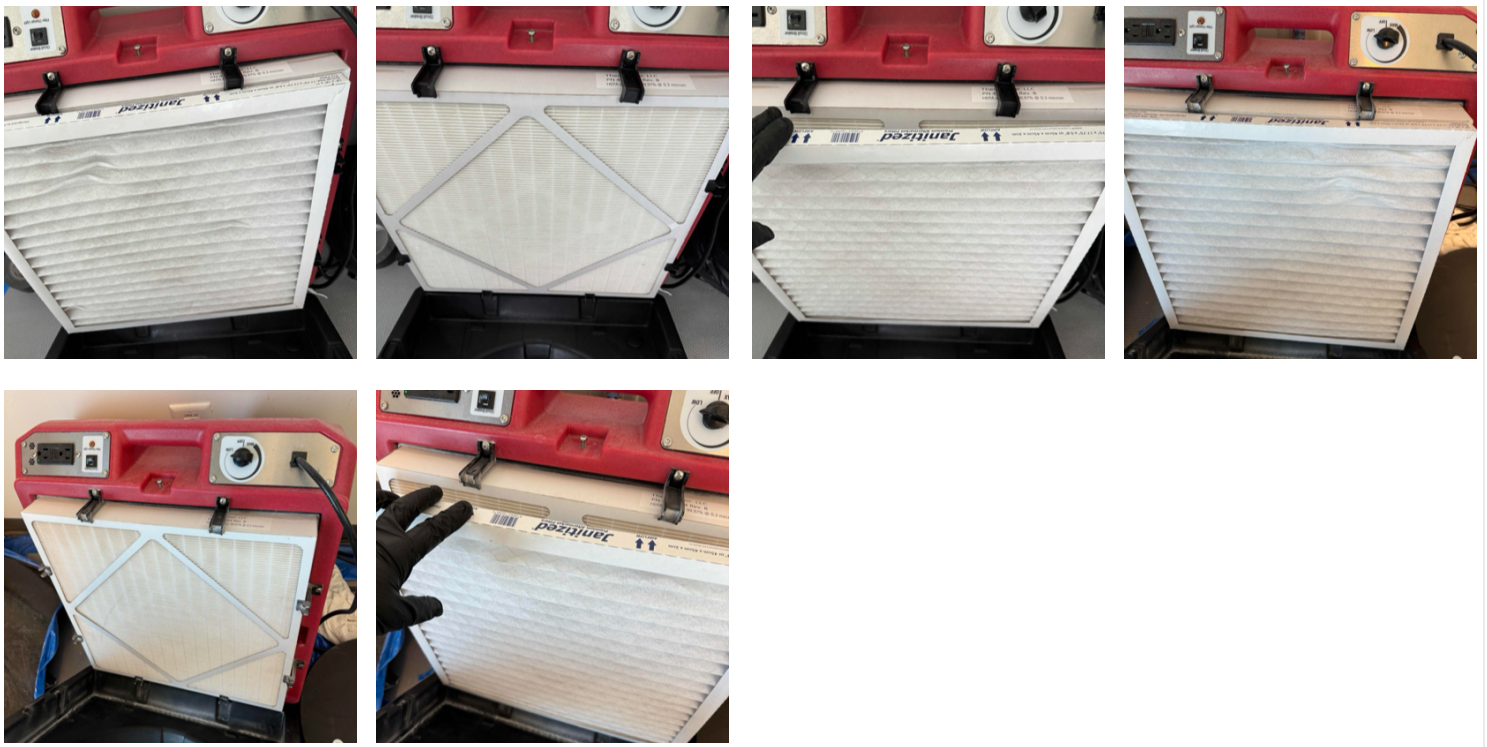
10. 311 Local History: Containment Upon Arrival/Departure



11. 311 Local History: Equipment
2 - Air Scrubbers
1 - Fogger
1 - Hepa Vac



12. 311 Local History: Filter Change



13. 311 Local History: Temperature and Humidity



14. Children's Area - Main Entrance: Containment Upon Arrival/Departure



15. Children's Area - Main Entrance: Equipment

- 10 - Zip Posts
- 3 - Air Scrubbers



16. Children's Area - Main Entrance: Filter Change

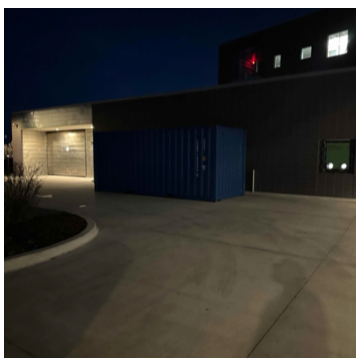




17. Children's Area - Main Entrance: Temperature and Humidity



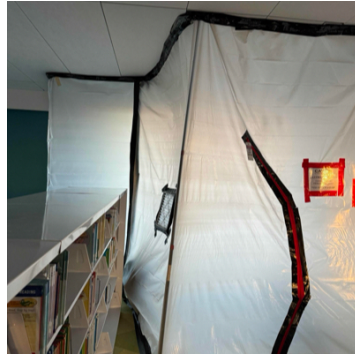
**18. Exterior: Equipment
2 - 20' Conex Boxes**



19. Exterior: Temperature and Humidity

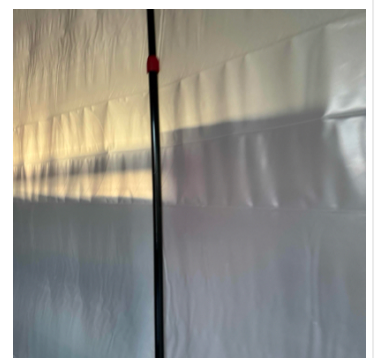
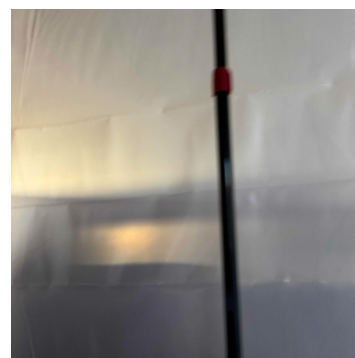
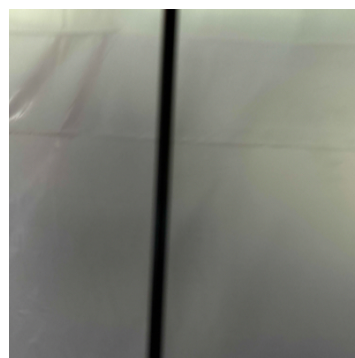
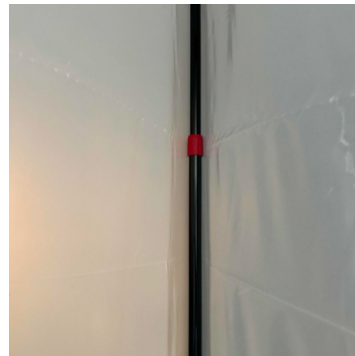
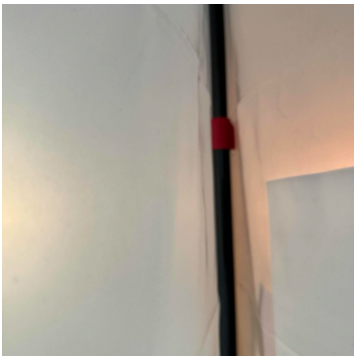


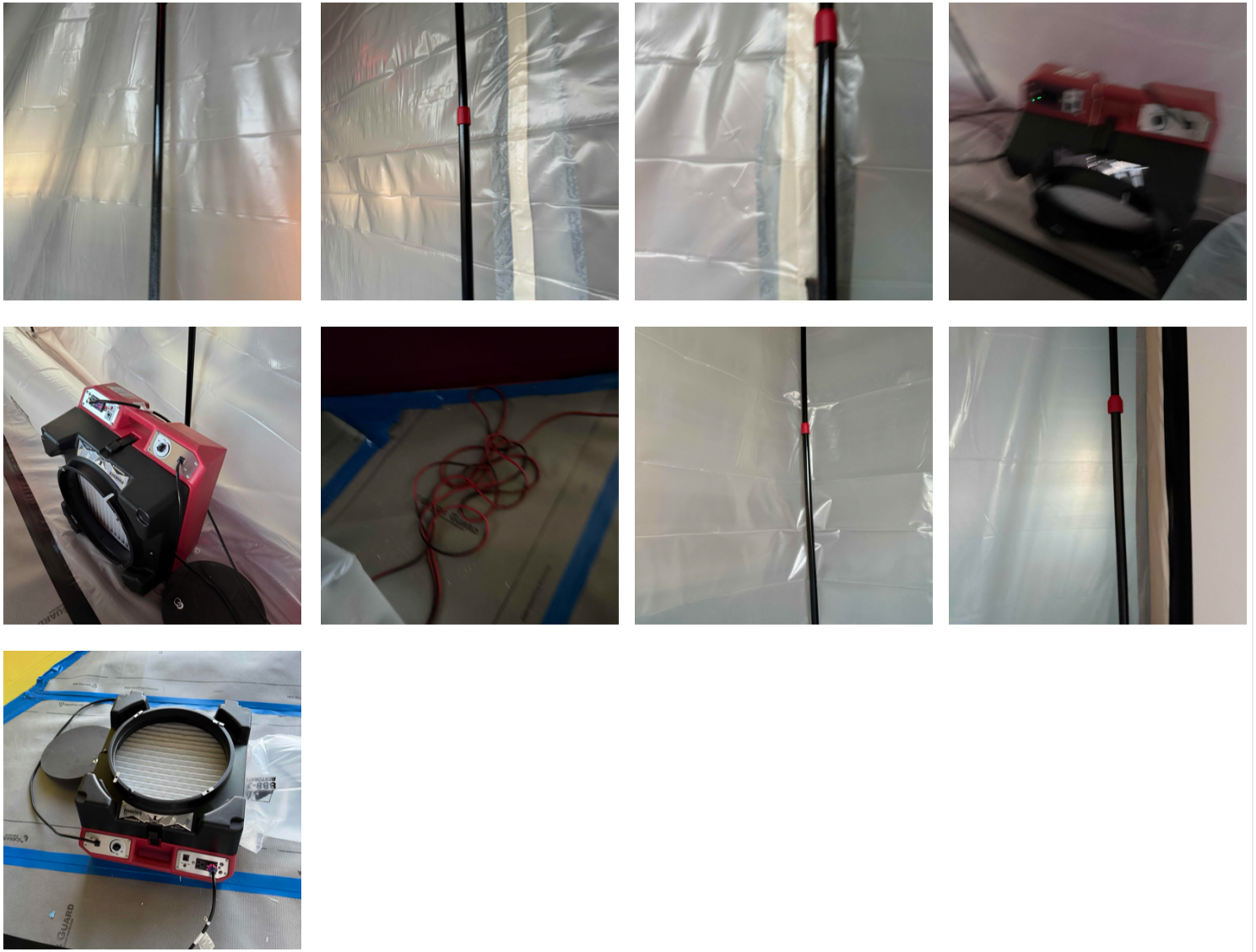
20. First Floor - Bay Window's (Children's Area): Containment Upon Arrival/Departure



21. First Floor - Bay Window's (Children's Area): Equipment

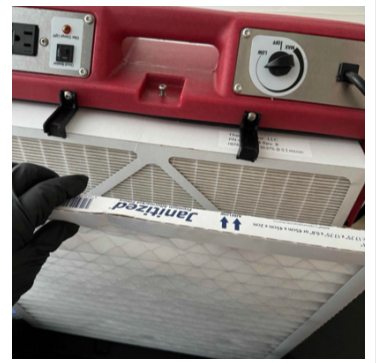
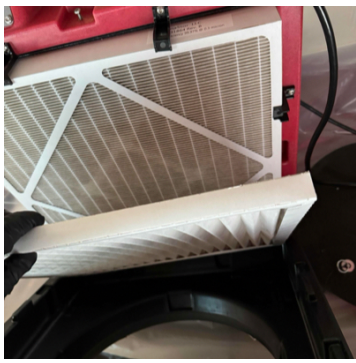
- 12 - Zip Posts
- 4 - Air Scrubbers
- 1 - 50 Ft Extension Cord





22. First Floor - Bay Window's (Children's Area): Filter Change





23. First Floor - Bay Window's (Children's Area): Temperature and Humidity

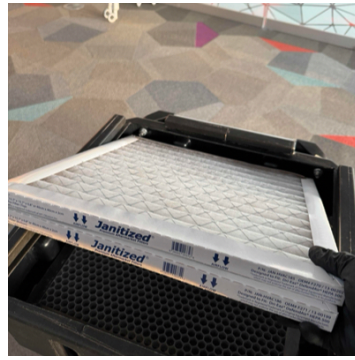
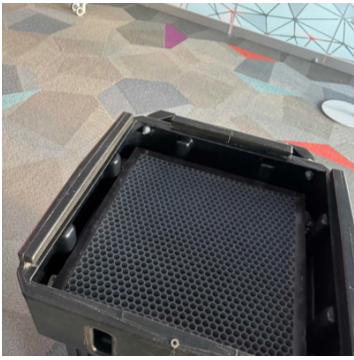


**24. First Floor - Main Area: Equipment
2 - Air Scrubbers**



25. First Floor - Main Area: Filter Change





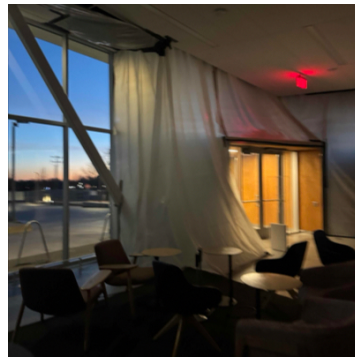
26. First Floor - Main Area: Temperature and Humidity



**27. First Floor - Southwest Vestibule:
Equipment
2 - Air Scrubbers
2 - Zip Posts**



28. First Floor - Southwest Vestibule: Containment Upon Arrival/Departure



29. First Floor - Southwest Vestibule: Filter Change



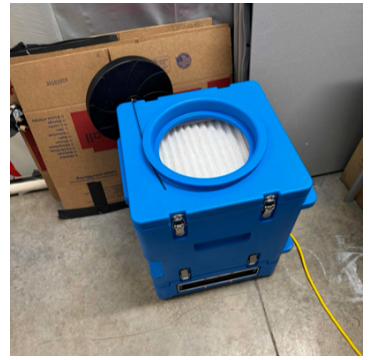
30. Garage: Containment Upon Arrival/Departure



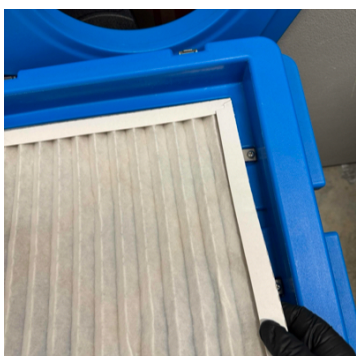
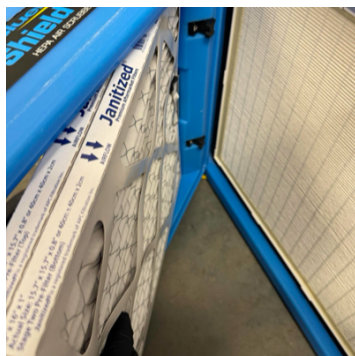
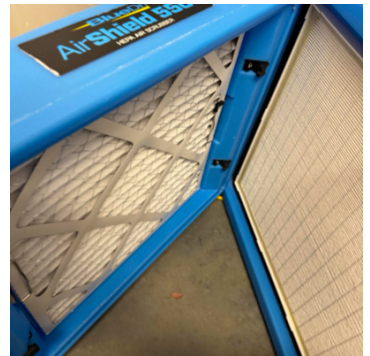
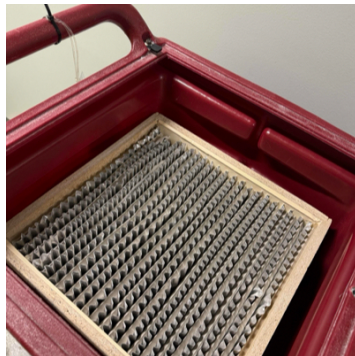
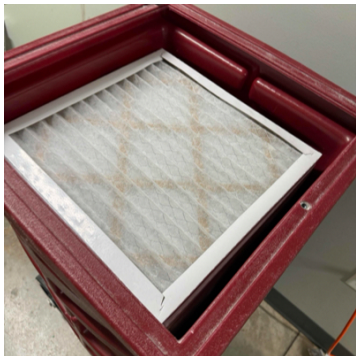
31. First Floor - Southwest Vestibule: Temperature and Humidity



- 32. Garage: Equipment
- 4 - Air Scrubbers
- 2 - 50' Extension Cords
- 1 - 25' Extension Cord
- 1 - Fogger



33. Garage: Filter Change



34. Garage: Temperature and Humidity



35. Overall: Equipment Documented

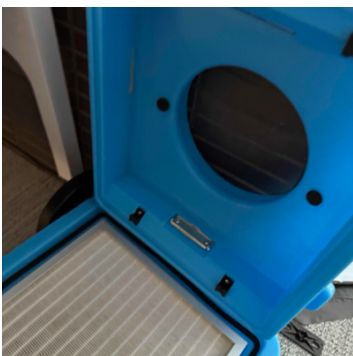
- 32 - Air Scrubbers
- 57 - Zip Posts
- 2 - 100' Extension Cords
- 7 - 50' Extension Cords
- 2 - 25' Extension Cord

36. Second Floor - Main Area: Equipment

- 1 - 25' Extension Cord
- 2 - Air Scrubbers



37. Second Floor - Main Area: Filter Change



38. Second Floor - Main Area: Temperature and Humidity

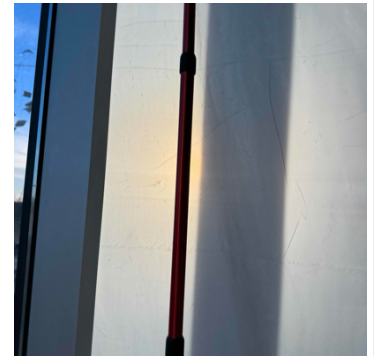
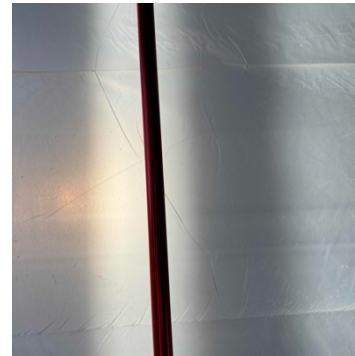
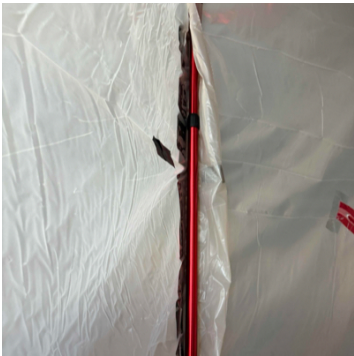


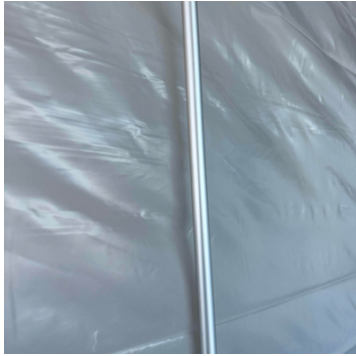
39. Second Floor - Southeast Corner: Containment Upon Arrival/Departure



40. Second Floor - Southeast Corner: Equipment

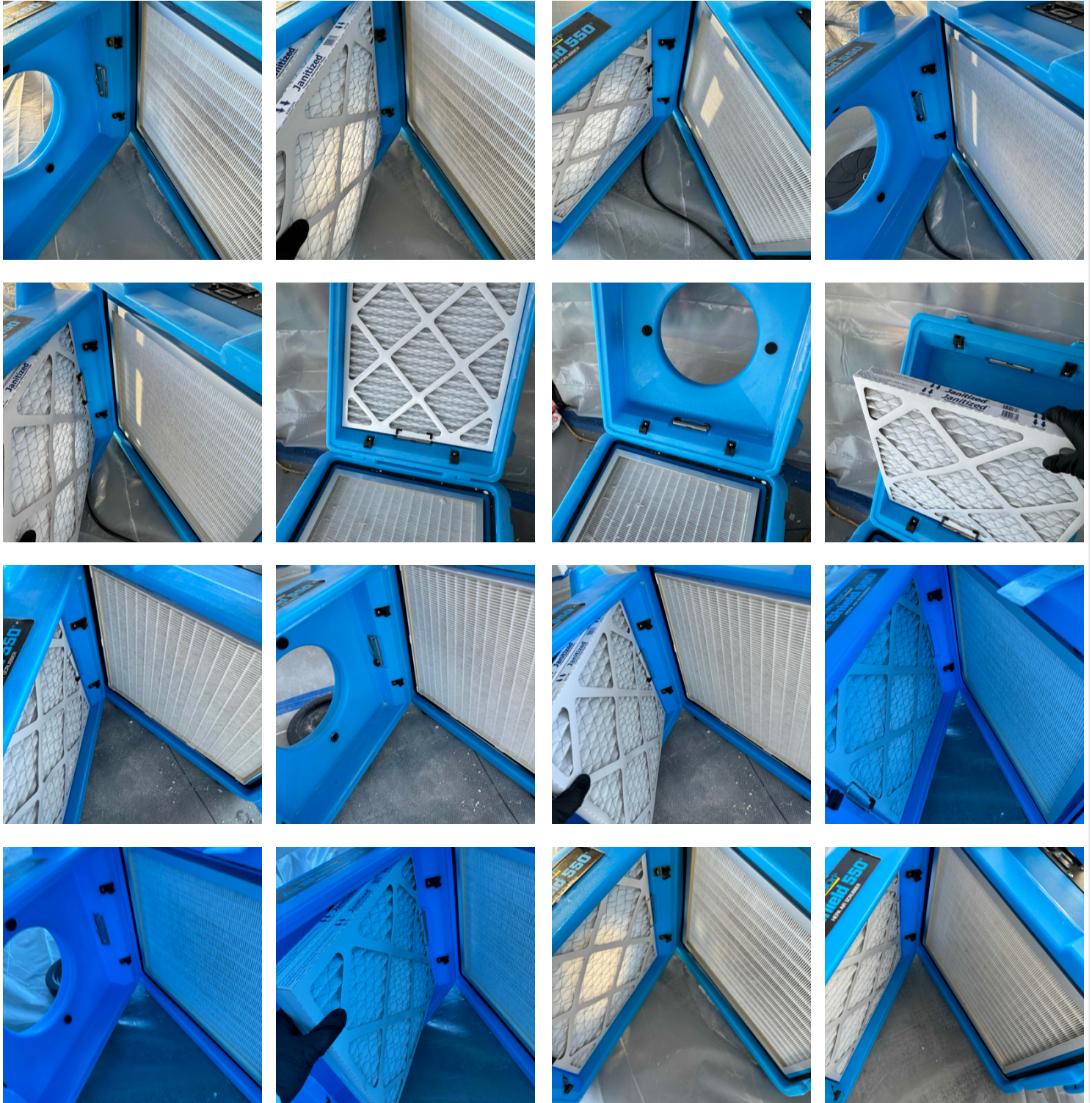
- 22 - Zip Posts
- 6 - Air Scrubbers
- 1 - 50' Extension Cord
- 1 - Fogger







41. Second Floor - Southeast Corner: Filter Change





42. Second Floor - Southeast Corner: Temperature and Humidity

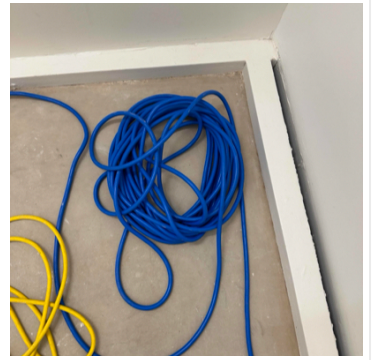
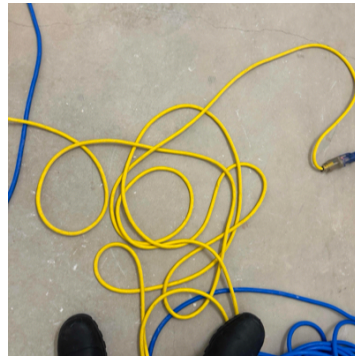


43. SO 115: Containment Upon Arrival/Departure



- 44. Stairwell: Equipment**
- 4 - Air Scrubbers
- 2 - 100' Extension Cord
- 2 - 50' Extension Cord
- 2- Hepa Vac
- 1 - Fogger

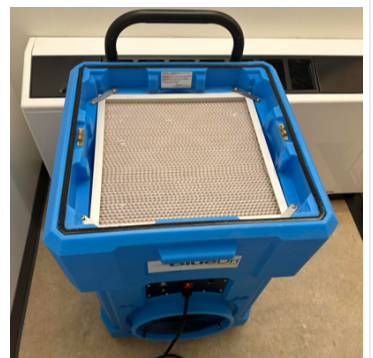




45. Stairwell: Containment Upon Arrival/Departure



46. Stairwell: Filter Change





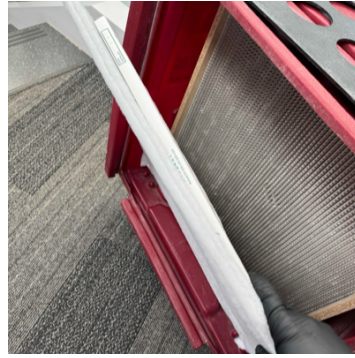
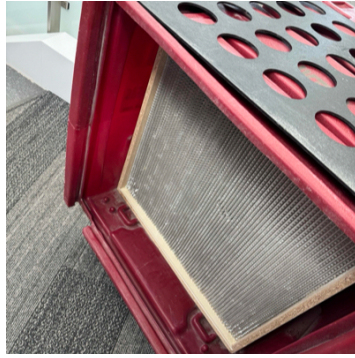
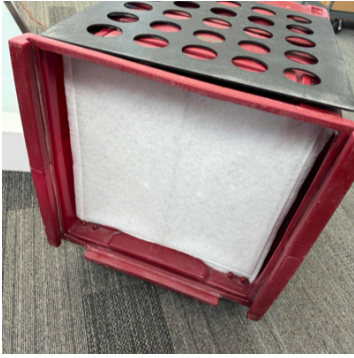
47. Stairwell: Temperature and Humidity



48. Third Floor - Main Area: Equipment
1 - Air Scrubber
1 - 50 Ft Extension Cord



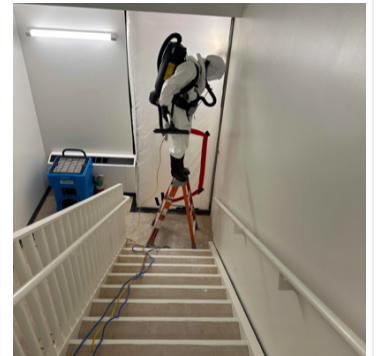
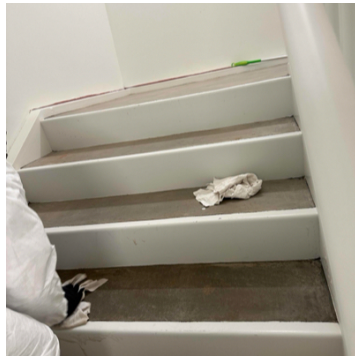
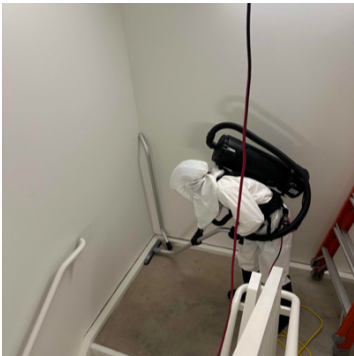
49. Third Floor - Main Area: Filter Change

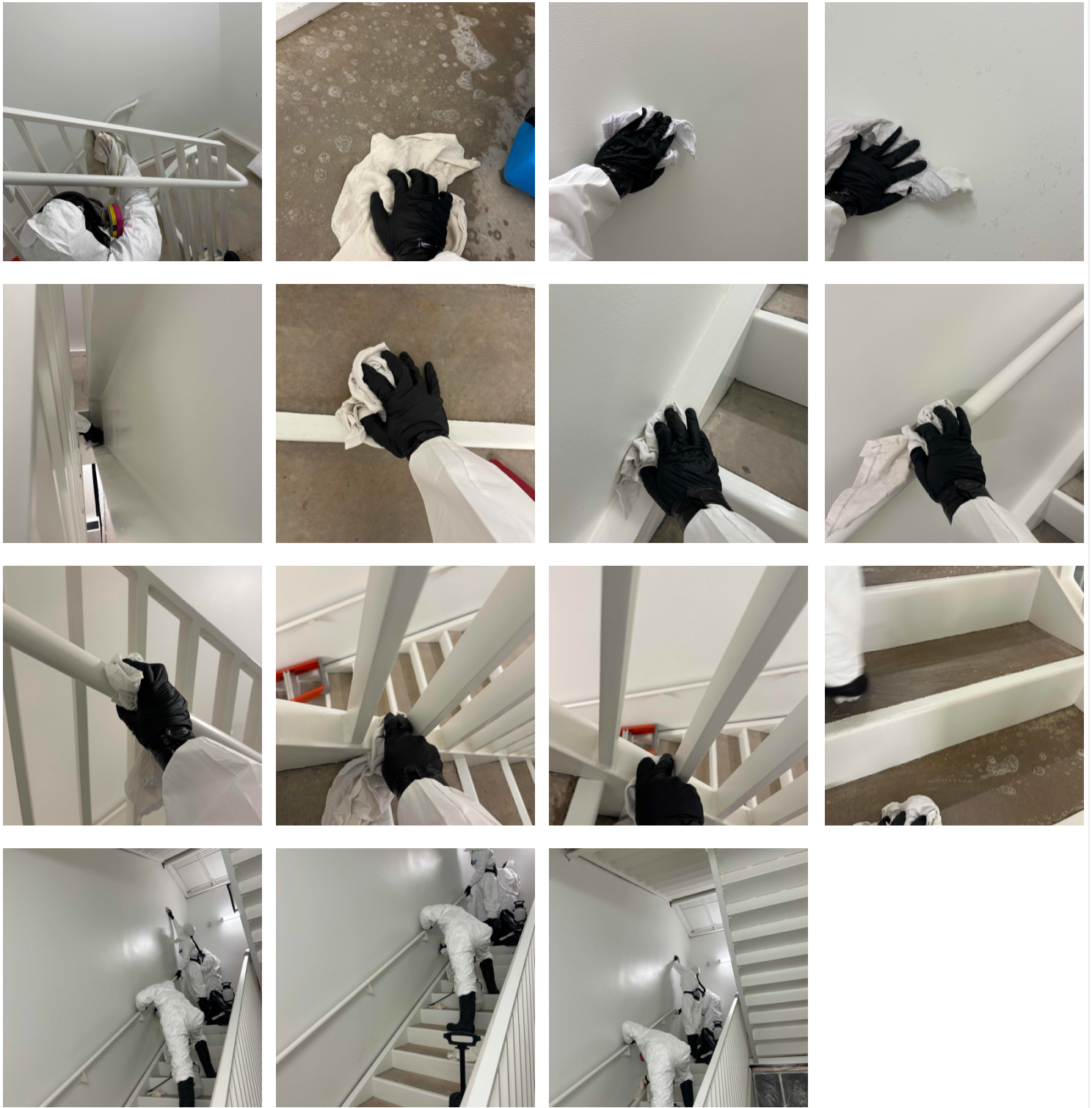


50. Third Floor - Main Area: Temperature and Humidity



51. Stairwell: Phase 2 Cleaning





52. Stairwell: Antimicrobial Fog Treatment

