

Date Sat 01/20/2024

Job #

## Weather

6:00 AM

10° 

Clear

Wind: 8 MPH | Precipitation: .0" | Humidity: 64%

12:00 PM

21° 

Clear

Wind: 9 MPH | Precipitation: .0" | Humidity: 44%

4:00 PM

31° 

Partially cloudy

Wind: 10 MPH | Precipitation: .0" | Humidity: 32%

## Work Logs

Name	Description
Cavins Environmental	Cavins Group arrived on site, inspected containment areas, took temperature and humidity readings of affected areas, all main areas and one exterior reading. Cavins Technician suited up in proper PPE and changed pre filters in air scrubbers within containments, along with all all pre filters in common areas.
Total	

## General Notes

### 1. 149 Storytime: Containment Upon Arrival/Departure

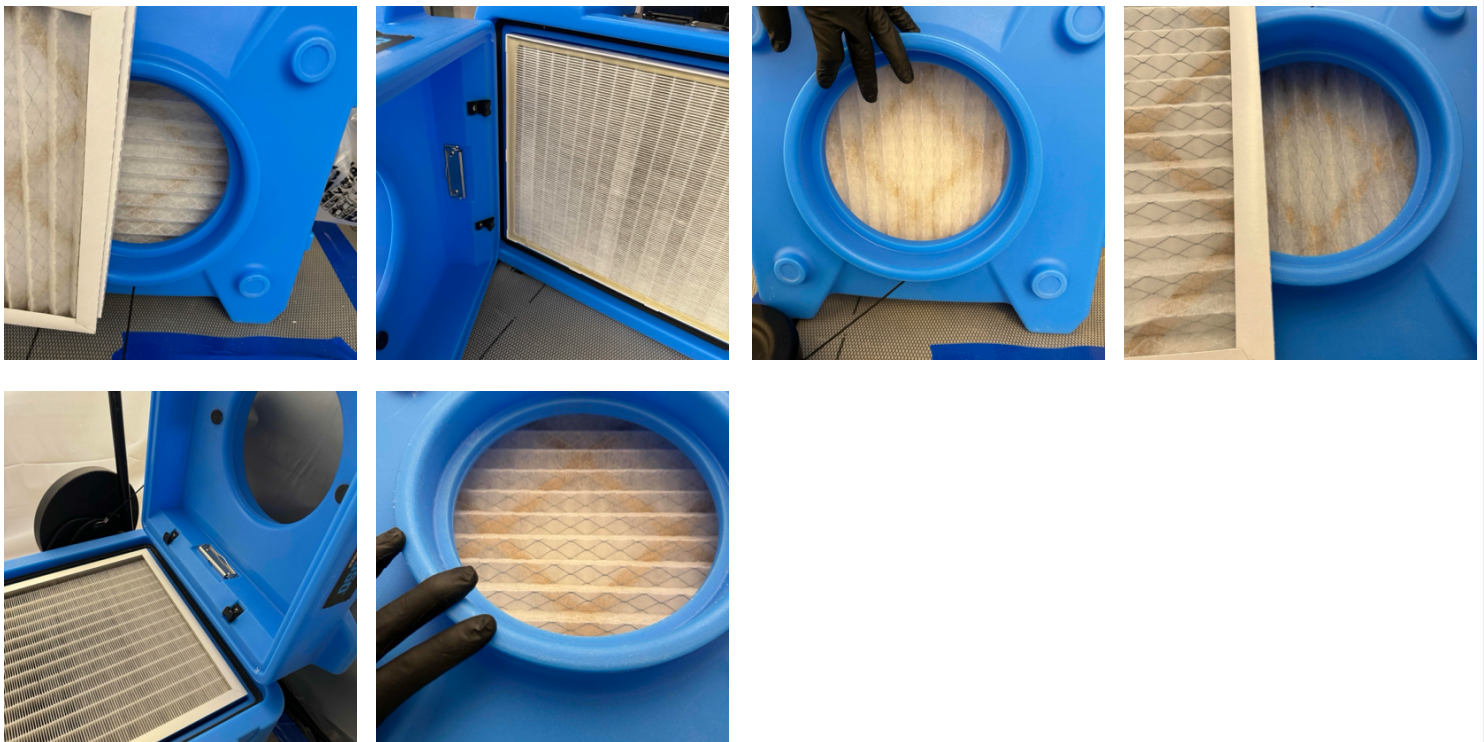


### 2. 149 Storytime: Equipment

- 2 - Air Scrubbers
- 5 - Zip Posts



### 3. 149 Storytime: Filter Change



### 4. 149 Storytime: Temperature And Humidity



**5. 201A Staff Only: Containment Upon Arrival/Departure**



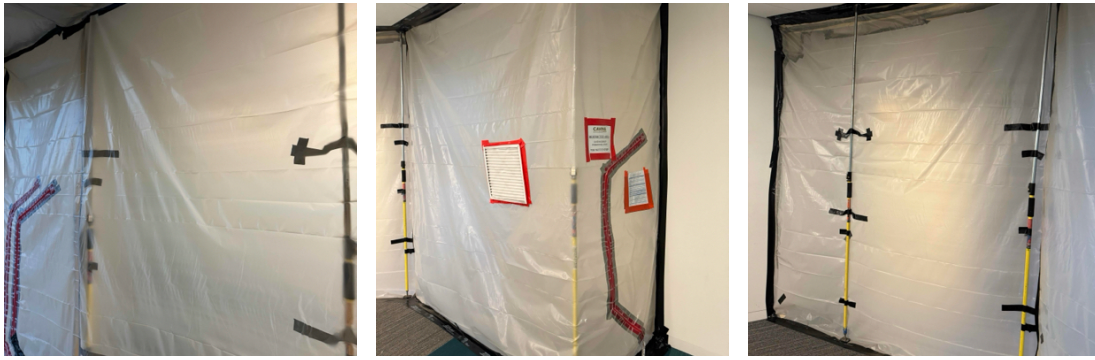
**6. 303 storage: Containment Upon Arrival/Departure**



**7. 303 storage: Equipment  
2 - Zip Posts**



**8. 305 Pioneer: Containment Upon Arrival/Departure**



**9. 305 Pioneer: Equipment**  
4 - Zip Posts



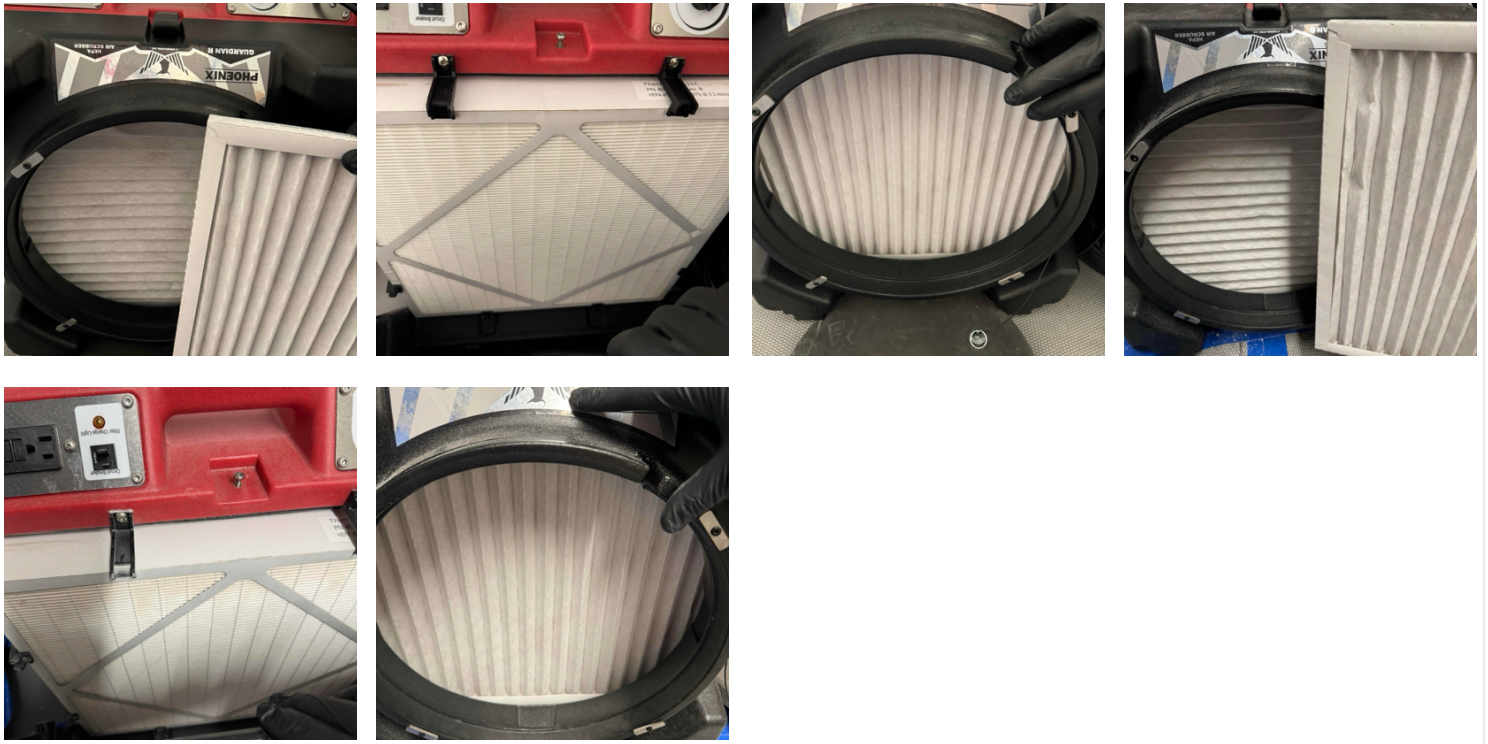
**10. 311 Local History: Containment Upon Arrival/Departure**



**11. 311 Local History: Equipment**  
2 - Air Scrubbers  
1 - Fogger  
1 - Hepa Vac



**12. 311 Local History: Filter Change**



**13. 311 Local History: Temperature and Humidity**



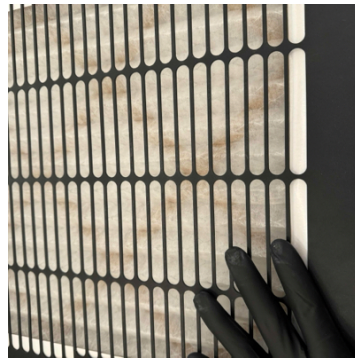
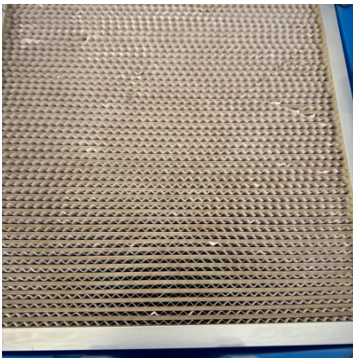
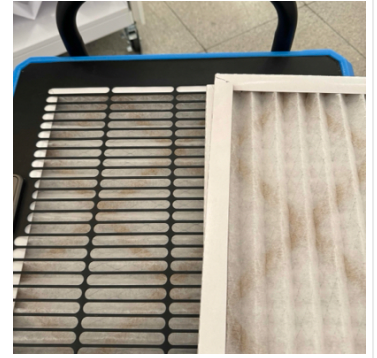
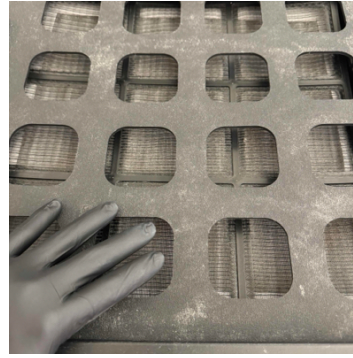
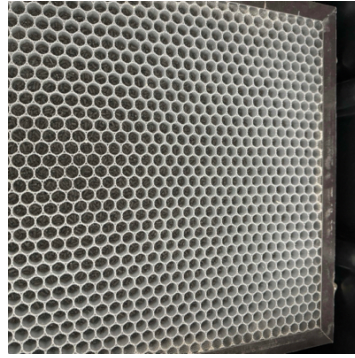
**14. Exterior: Equipment  
2 - 20' Job Conex**



**15. Exterior: Temperature and Humidity**



**16. First Floor - Main Area: Filter Change**



**17. First Floor - Main Area: Temperature and Humidity**



**18. First Floor - Southwest Vestibule:  
Equipment  
2 - Air Scrubbers  
2 - Zip Posts**

**19. First Floor - Southwest Vestibule: Containment Upon Arrival/Departure**

**20. First Floor - Southwest Vestibule: Filter Change**



**21. First Floor - Southwest Vestibule: Temperature and Humidity**



**22. Garage: Containment Upon Arrival/Departure**

- 23. Garage: Equipment**  
 4 - Air Scrubbers  
 2 - 50' Extension Cords  
 1 - 25' Extension Cord  
 1 - Fogger

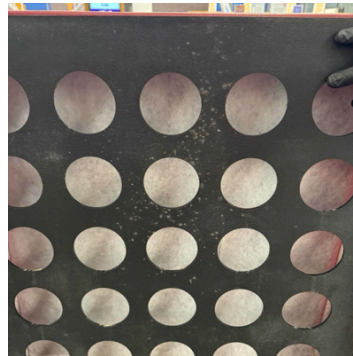




**24. Third Floor - Main Area: Equipment**  
1 - Air Scrubber  
1 - 50' Extension Cord



**25. Third Floor - Main Area: Filter Change**

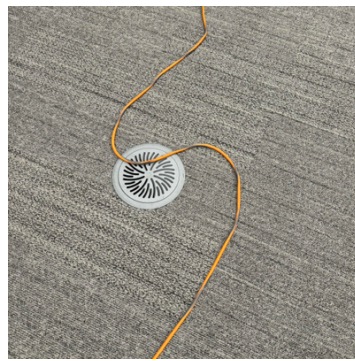


**26. Third Floor - Main Area: Temperature And Humidity**

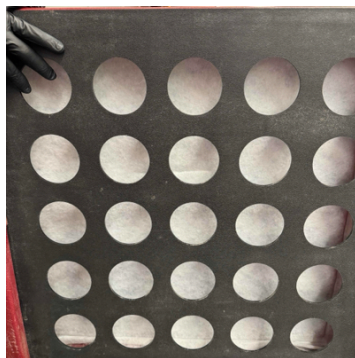
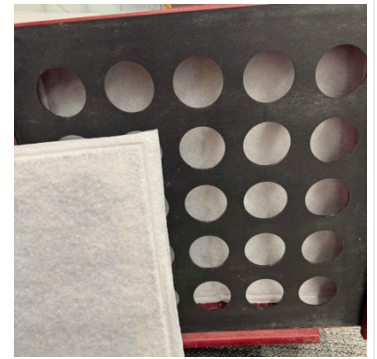
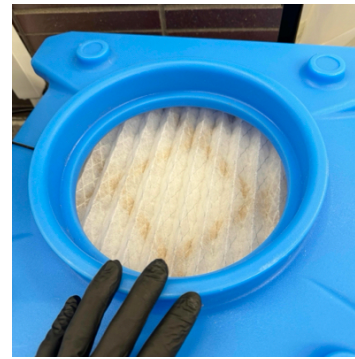
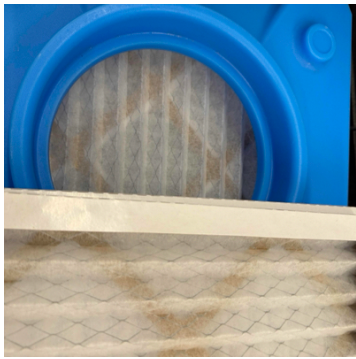


**27. Second Floor - Main Area: Equipment**  
2 - Air Scrubbers  
1 - 25' Extension Cord





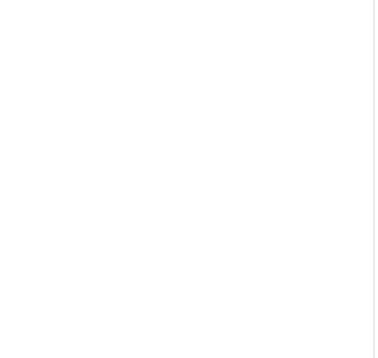
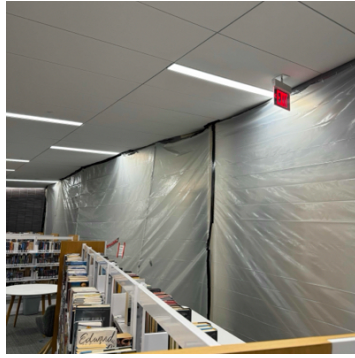
**28. Second Floor - Main Area: Filter Change**



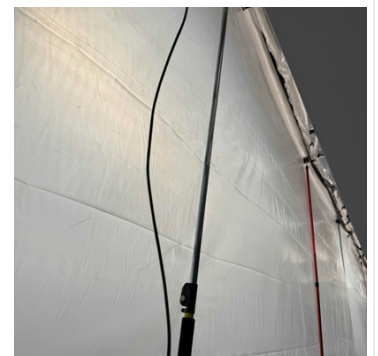
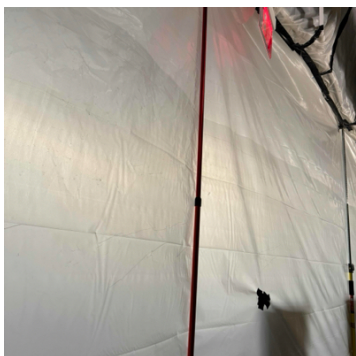
**29. Second Floor - Main Area: Temperature And Humidity:**

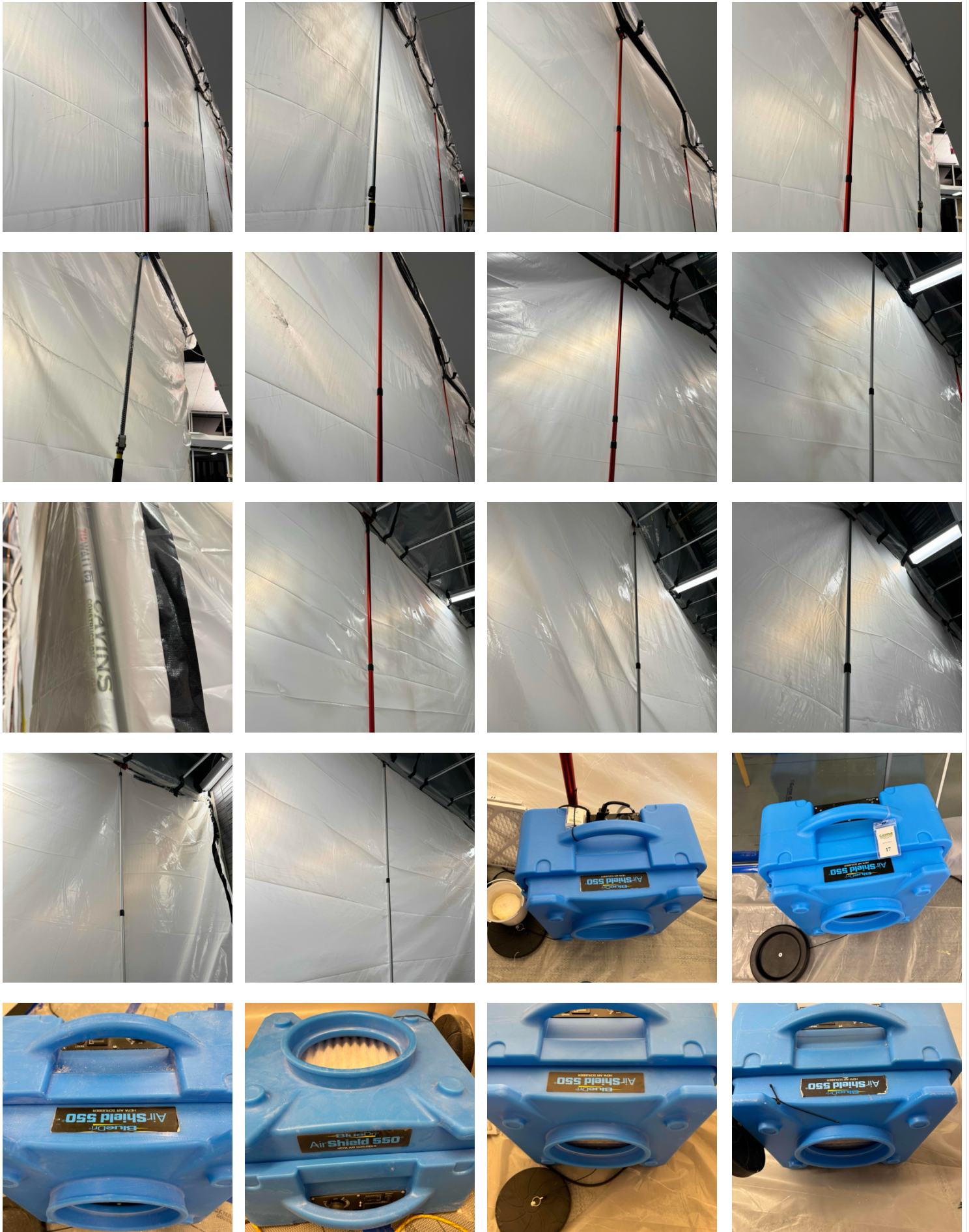


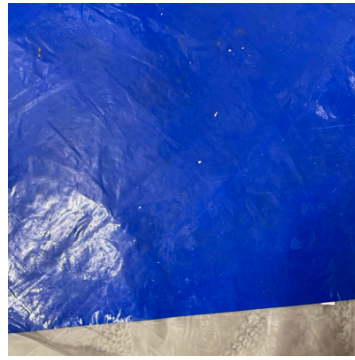
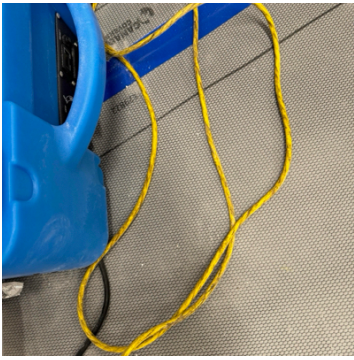
**30. Second Floor - Southeast Corner: Containment Upon Arrival/Departure**



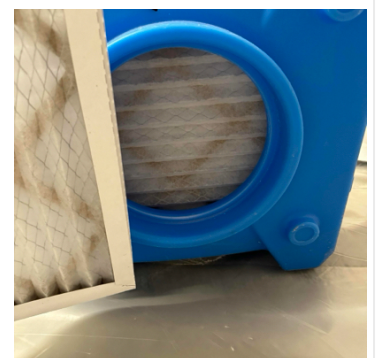
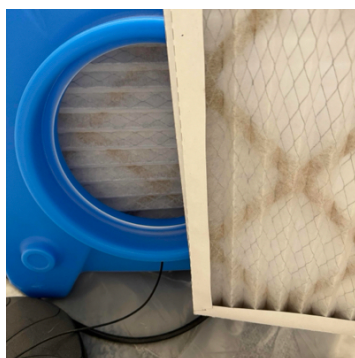
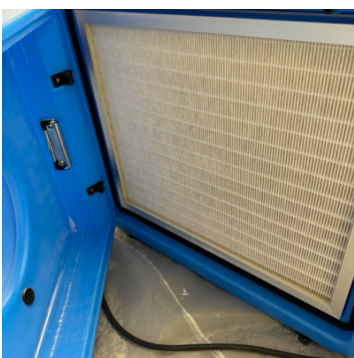
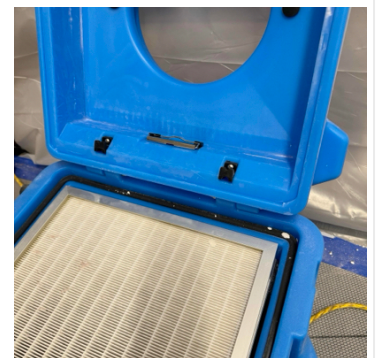
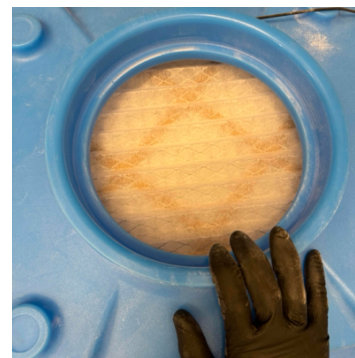
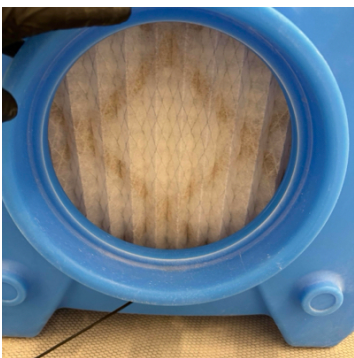
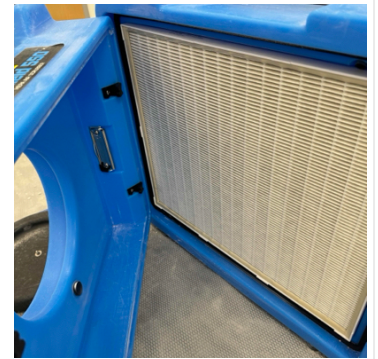
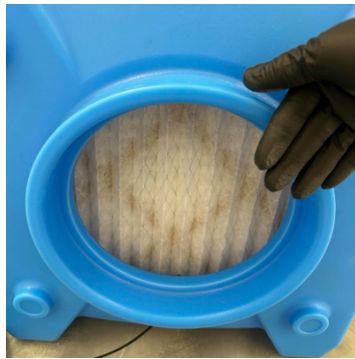
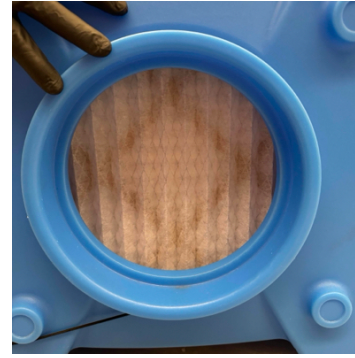
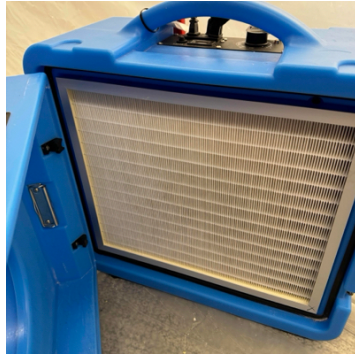
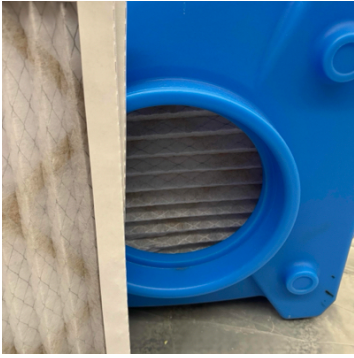
**31. Second Floor - Southeast Corner: Equipment**  
 22 - Zip Posts  
 6 - Air Scrubbers  
 1 - 50' Extension Cord  
 1 - Fogger

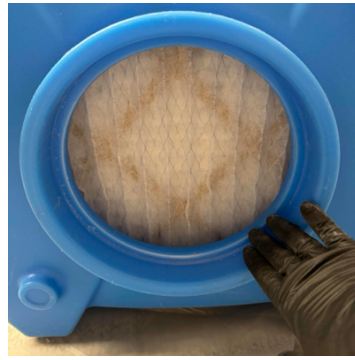
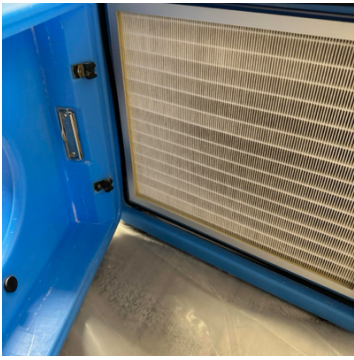






32. Second Floor - Southeast Corner: Filter Change

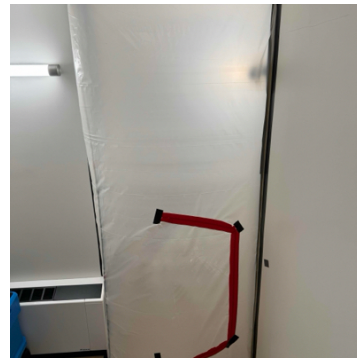
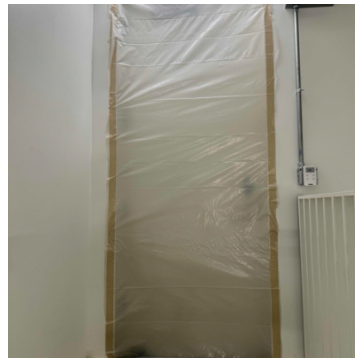




**33. Second Floor - Southeast Corner: Temperature And Humidity**

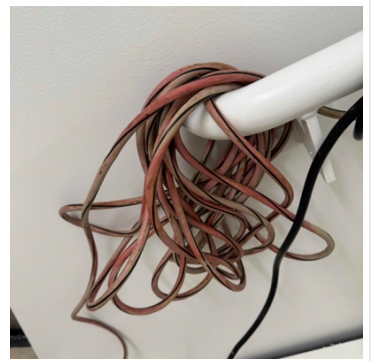
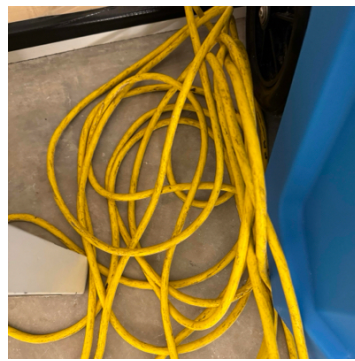


**34. Stairwell: Containment Upon Arrival/Departure**

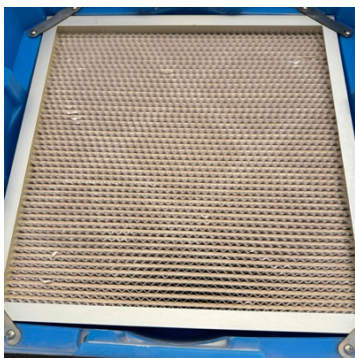
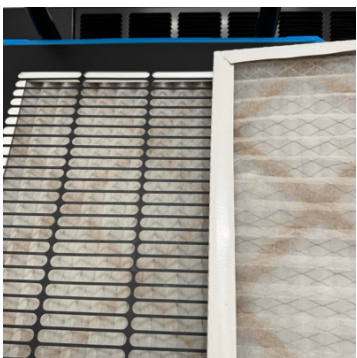
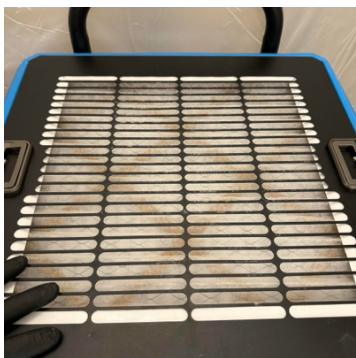
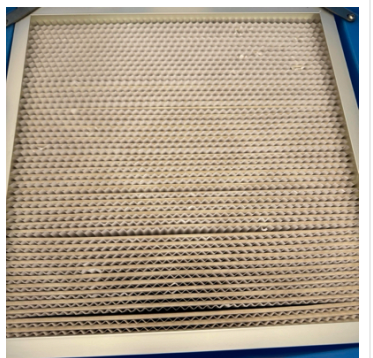
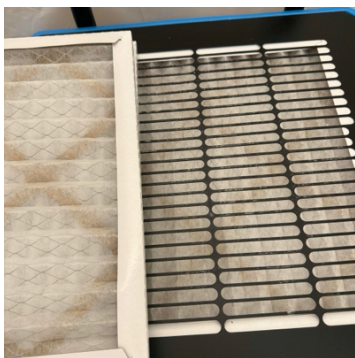
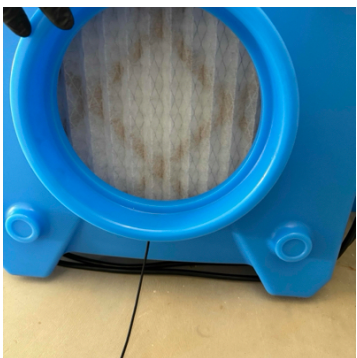
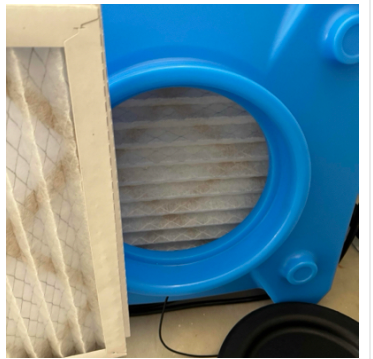


- 35. Stairwell: Equipment**
- 4 - Air Scrubbers
- 2 - 100' Extension Cords
- 1 - 50' Extension Cord
- 1 - Zip Post
- 1 - Fogger





36. Stairwell: Filter Change



**37. Stairwell: Temperature And Humidity**



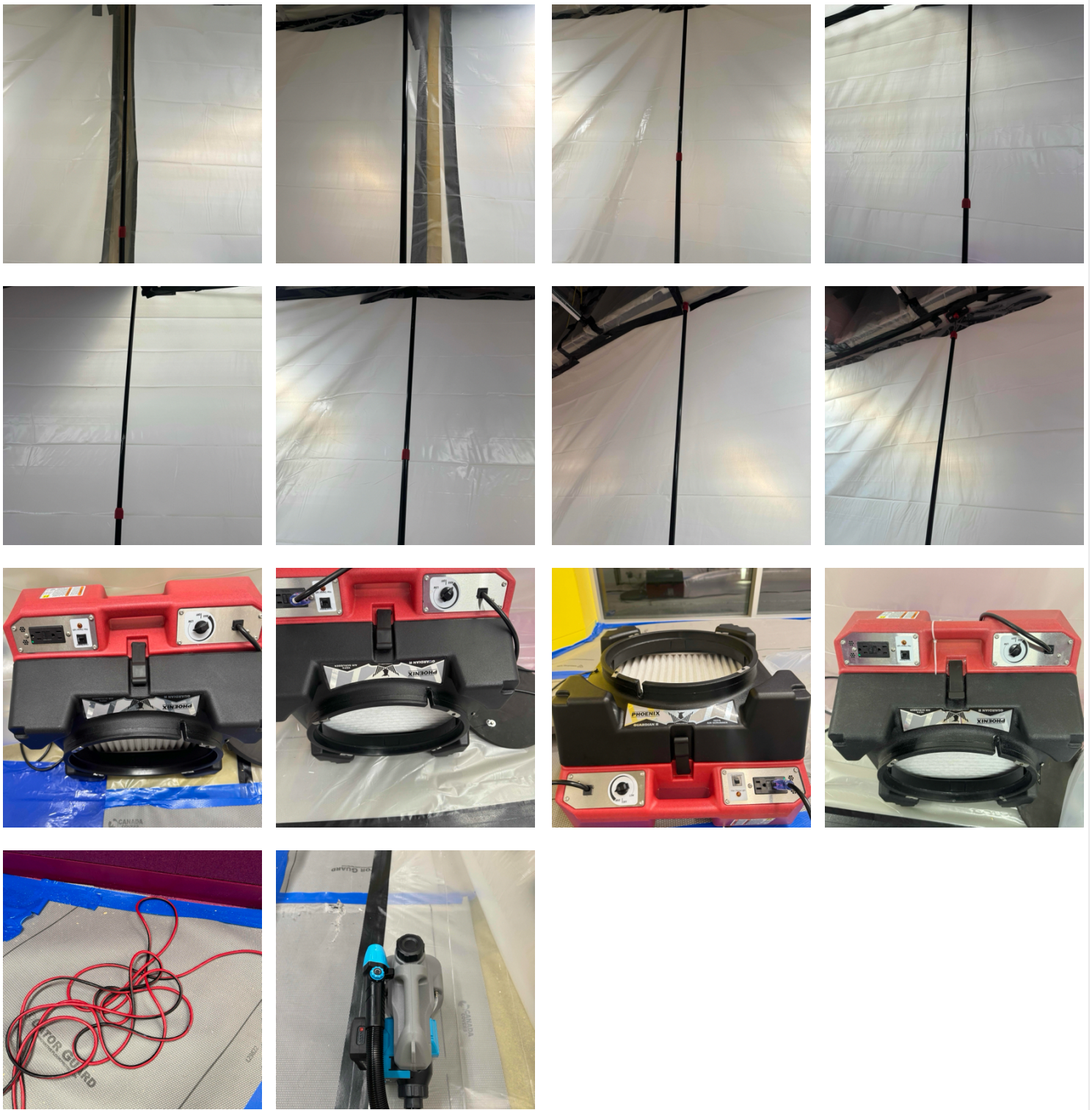
**38. First Floor - Bay Windows (Children's Area): Containment Upon Arrival/Departure**



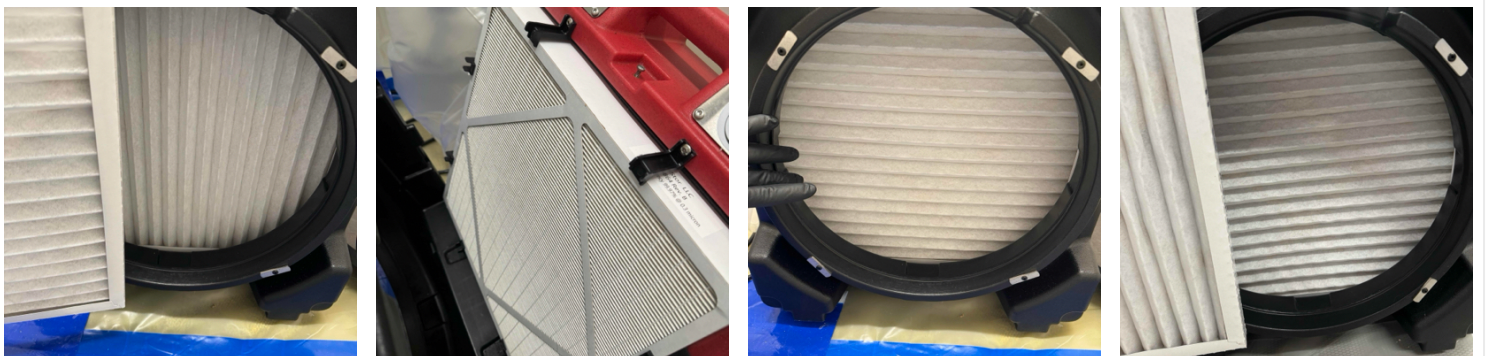
**39. First Floor - Bay Windows (Children's Area): Equipment**

- 12 - Zip Posts
- 4 - Air Scrubbers
- 1 - 50' Extension Cord





**40. First Floor - Bay Windows (Children's Area): Filter Change**







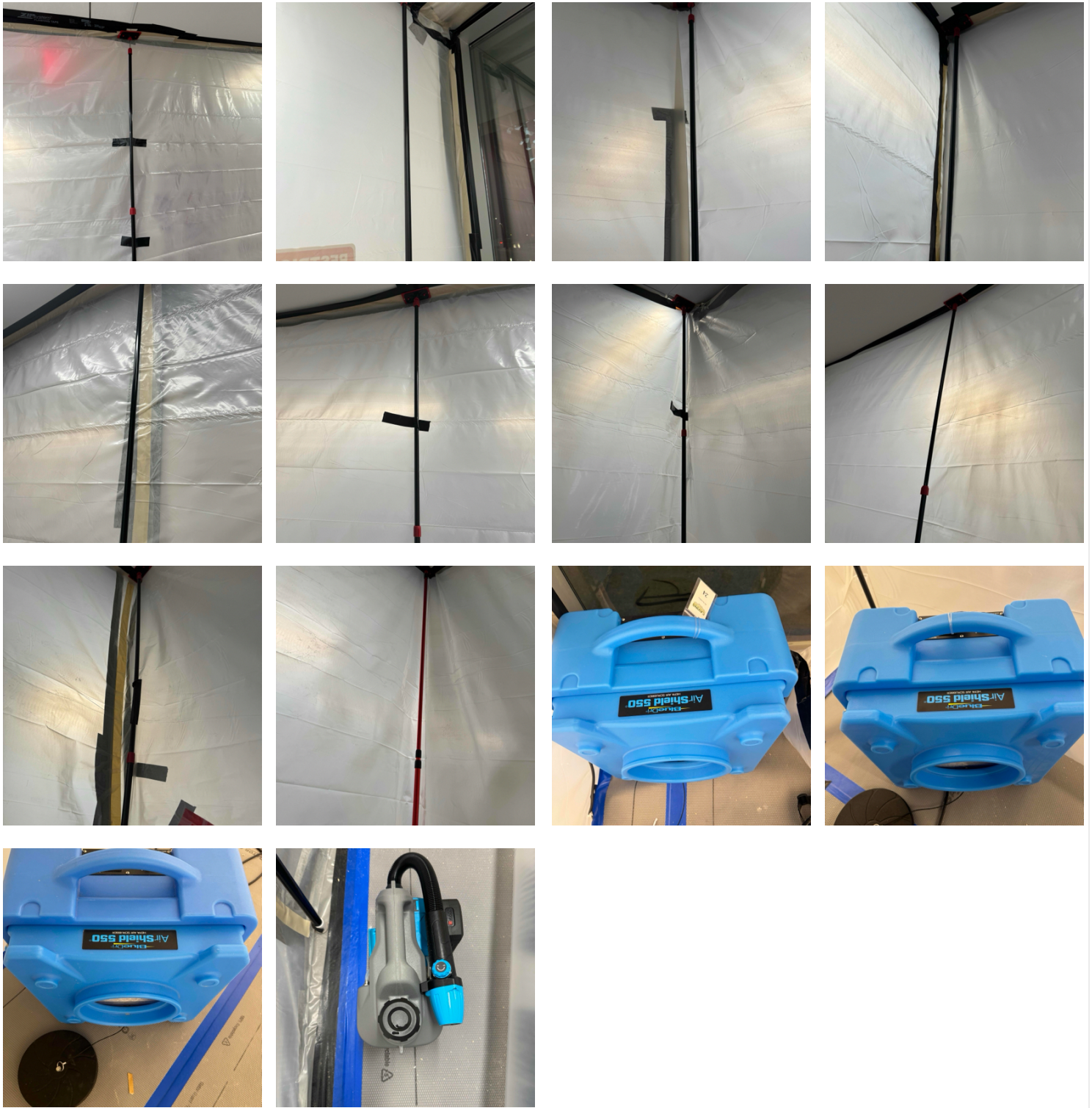
**41. First Floor - Bay Windows (Children's Area): Temperature And Humidity**



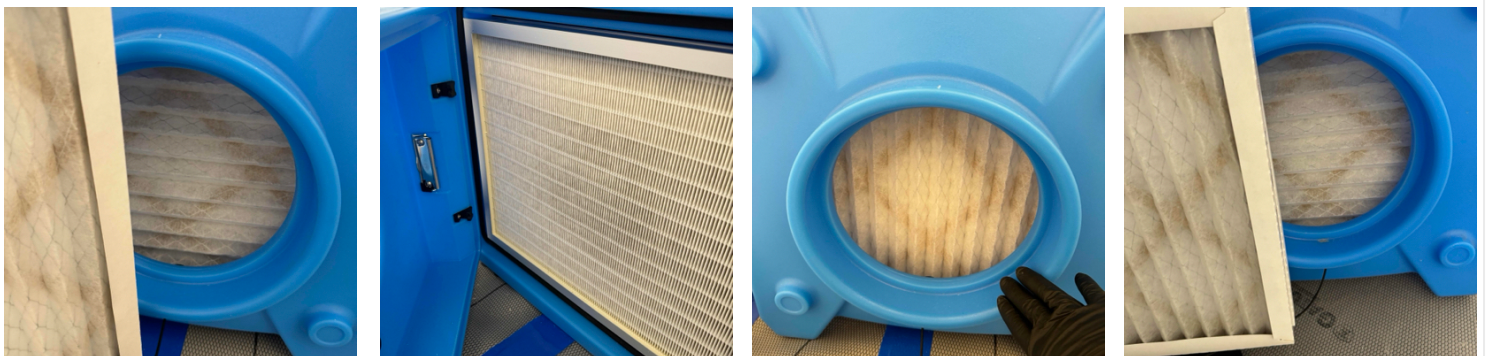
**42. Main Entrance - Children's Area: Containment Upon Arrival/Departure**



**43. Main Entrance - Children's Area: Equipment**  
 10 - Zip Posts  
 3 - Air Scrubbers

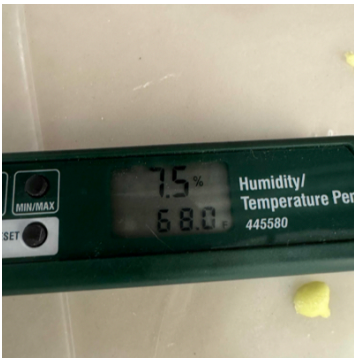


**44. Main Entrance - Children's Area: Filter Change**





**45. Main Entrance - Children's Area: Temperature And Humidity**



**46. First Floor - Main Area: Equipment  
2 - Air Scrubbers**



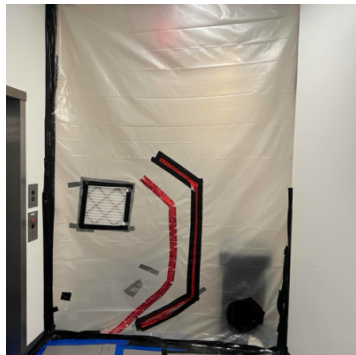
**47. First Floor - Southwest Vestibule: Containment Upon Arrival/Departure**



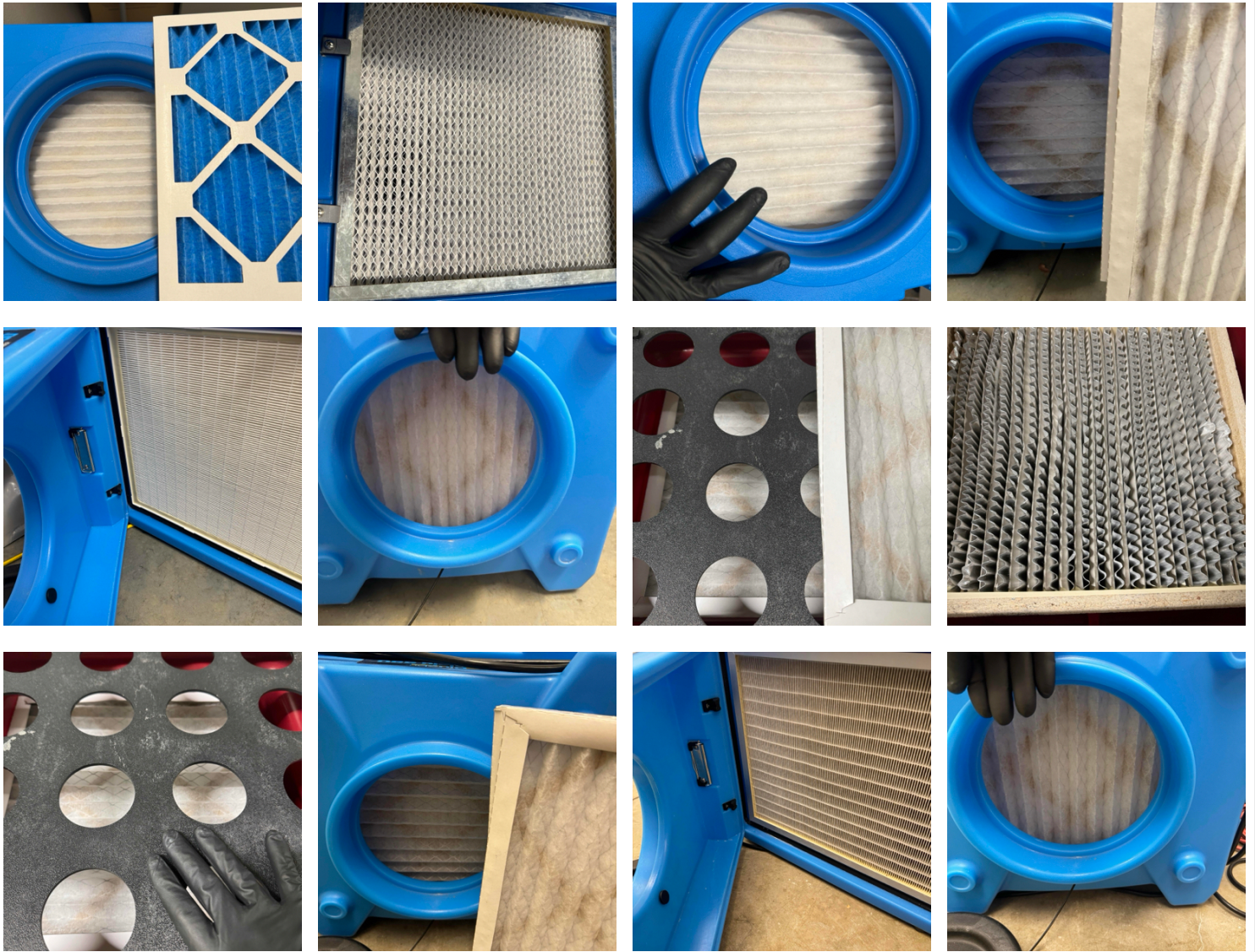
**48. First Floor - Southwest Vestibule: Equipment**  
 2 - Zip Posts  
 2 - Air Scrubbers



**49. First Floor - Southwest Vestibule: Filter Change**  
**50. First Floor - Southwest Vestibule: Temperature And Humidity**  
**51. SO 115: Containment Upon Arrival/Departure**



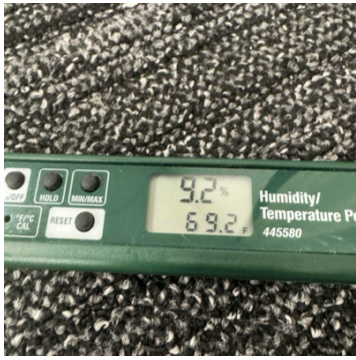
**52. Garage: Filter Change**



**53. Garage: Temperature And Humidity**



**54. SO 115: Temperature And Humidity**



- 55. Overall: Equipment**  
32 - Air Scrubbers  
58 - Zip Posts  
2 - 100' Extension Cords  
7 - 50' Extension Cords  
2 - 25' Extension Cord