

Date Mon 01/22/2024

Job #

Weather

6:00 AM

29° 

Overcast

Wind: 1 MPH | Precipitation: .0" | Humidity: 93%

12:00 PM

32° 

Overcast

Wind: 1 MPH | Precipitation: .0" | Humidity: 93%

4:00 PM

34° 

Snow, Rain, Overcast

Wind: 1 MPH | Precipitation: .0" | Humidity: 94%

Work Logs

Name	Description
Cavins Environmental	Cavins Group took temperature and humidity readings of affected areas, all common areas and one outside. Cavins technicians suited up in proper PPE and changed pre filters in air scrubbers within containments, along with all all pre filters in main areas. Air quality testing was performed on common areas to monitor current status of the building. An additional spore trap test was taken on the roof access stairwell for post remediation verification testing. Demo was performed on the second floor, SE corner study area and the bay windows in the children's area.
Total	

General Notes

1. Stairwell: Clearance testing

A spore trap sample was taken



2. Stairwell: Temperature and Humidity at Testing

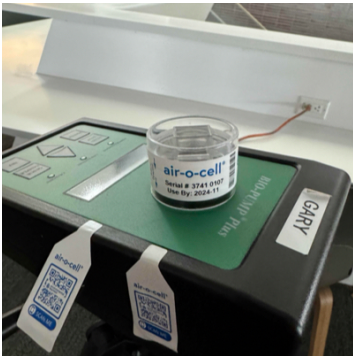


3. Third Floor - Common Area: Temperature and Humidity at Testing



4. Third Floor - Common Area: Air Quality Testing

A spore trap sample was taken



5. Second Floor - Common Area: Temperature and Humidity at Testing



6. Second Floor - Common Area: Air Quality Testing

A spore trap sample was taken



7. First Floor - Common Area: Temperature and Humidity at Testing



8. First Floor - Common Area: Air Quality Testing

A spore trap sample was taken



9. Exterior: Temperature and Humidity at Testing



10. Exterior: Air Quality Testing

A spore trap sample was taken



11. Children's Area: Temperature and Humidity at Testing



12. Children's Area: Air Quality Testing

A spore trap sample was taken



13. 303 Storage: Containment Upon Arrival/Departure



14. 303 Storage: Equipment 2 - Zip Posts



15. 305 Pioneer: Containment Upon Arrival/Departure



**16. 305 Pioneer: Equipment
4 - Zip Posts**



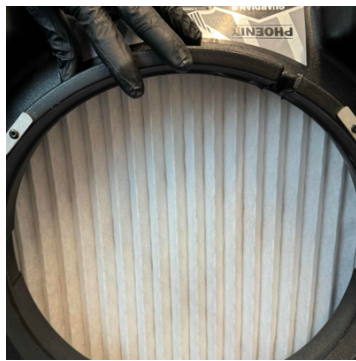
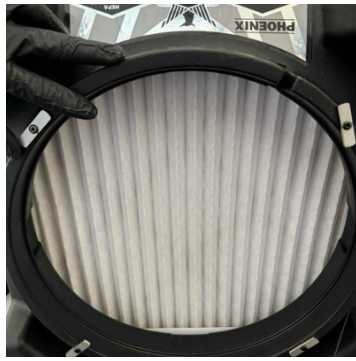
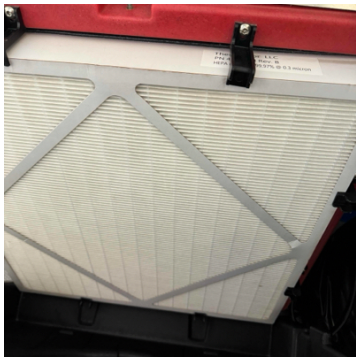
17. 311 Local History: Containment Upon Arrival/Departure



**18. 311 Local History: Equipment
2 - Air Scrubbers
1 - Fogger**



19. 311 Local History: Filter Change



20. 311 Local History: Temperature And Humidity

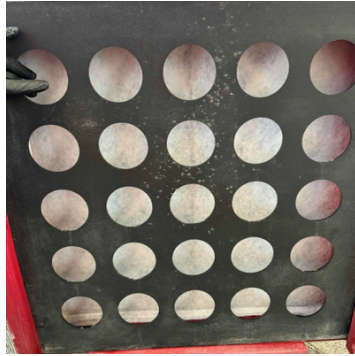


21. Third Floor - Main Area: Equipment

- 1 - Air Scrubber
- 1 - 50' Extension Cord



22. Third Floor - Main Area: Filter Change



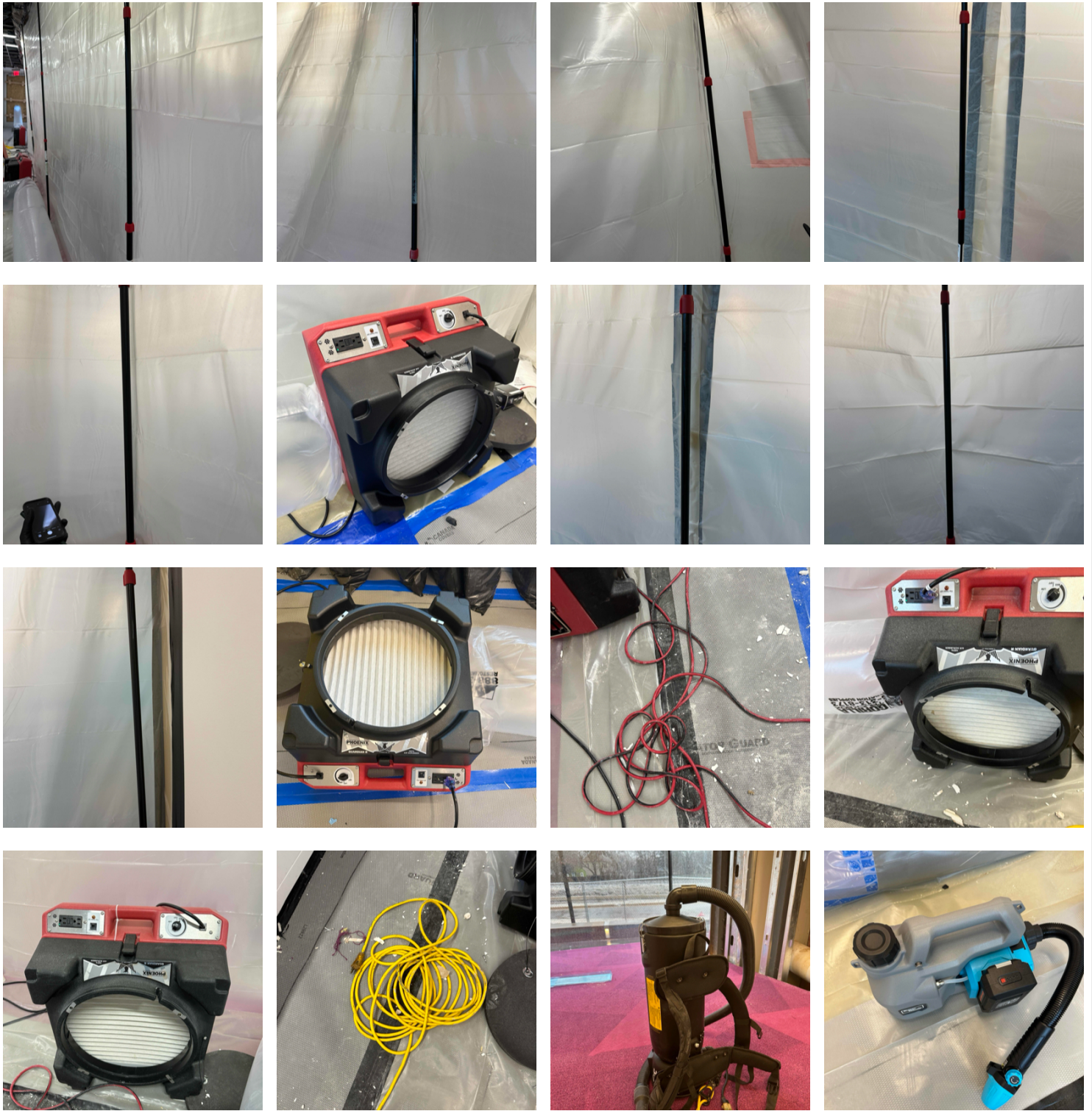
23. Third Floor - Main Area: Temperature And Humidity



24. First Floor - Bay Windows (Children's Area): Equipment

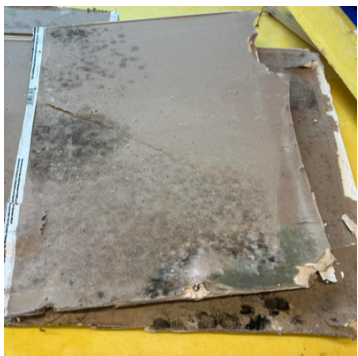
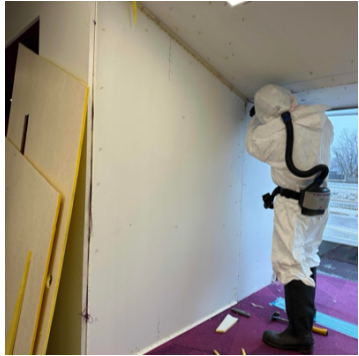
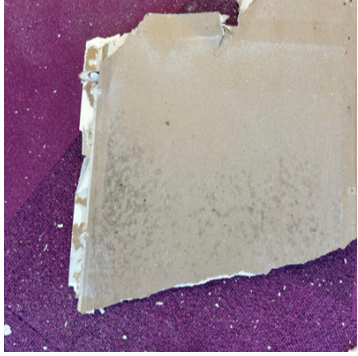
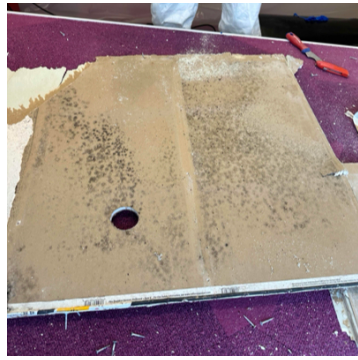
- 12 - Zip Posts
- 4 - Air Scrubbers
- 1 - 50' Extension Cord
- 1 - HEPA Vac
- 1 - Fogger





25. First Floor - Bay Windows (Children's Area): Selective Demo



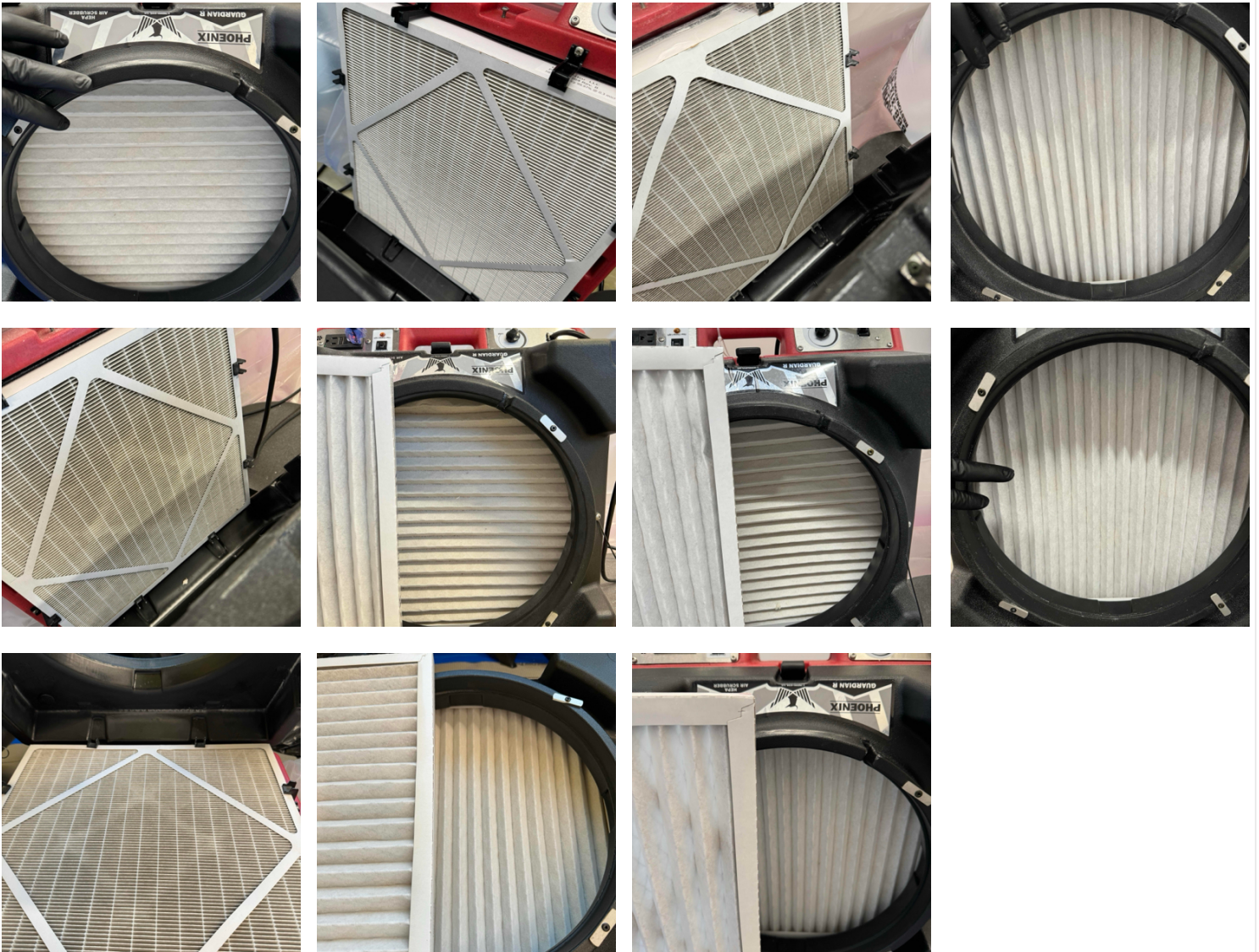




26. First Floor - Bay Windows (Children's Area): Containment Upon Arrival/Departure



27. First Floor - Bay Windows (Children's Area): Filter Change

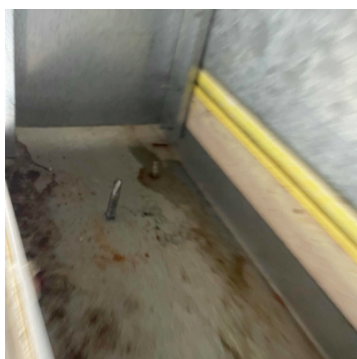
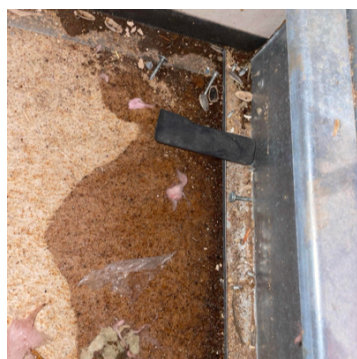
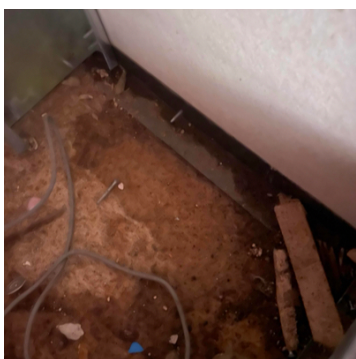
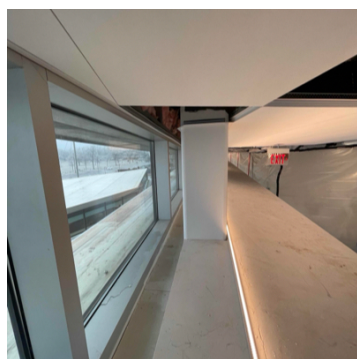


28. First Floor - Bay Windows (Children's Area): Temperature And Humidity



29. Second Floor - Southeast Corner: Water Intrusion

Water intrusion is visible on the southeast corner about 20' west from corner, visible signs of water are seen in bottom of metal track of exterior wall above ceiling grid and in overhang above windows



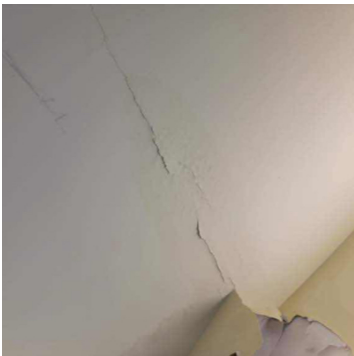


30. 201A Staff Only: Containment Upon Arrival/Departure



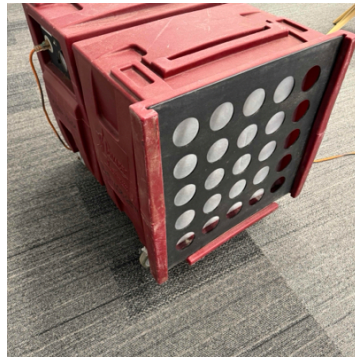
31. Second Floor - Southeast Corner: Study Room Remediation

Water damage was seen on wall and ceiling above windows in study room on Northeast corner of second floor, selective demo started at window height and followed any water signs or visible microbial growth. Visible microbial growth was seen after parts of drywall finish were removed.

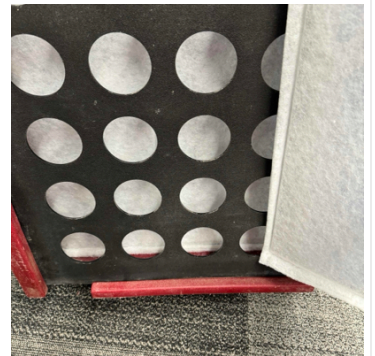
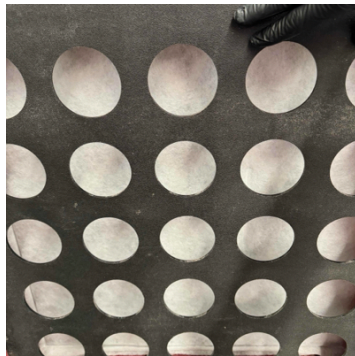


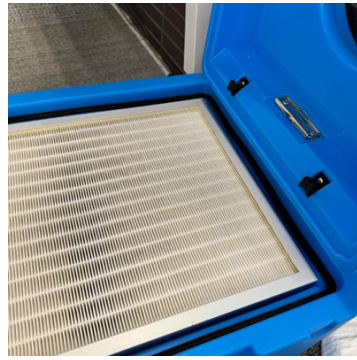
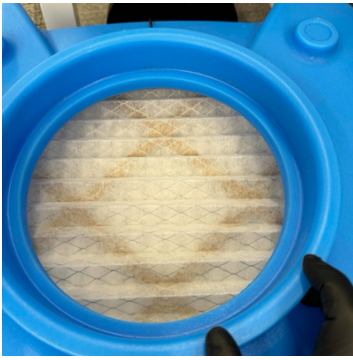


32. Second Floor - Main Area: Equipment
2 - Air Scrubbers
1 - 25' Extension Cord



33. Second Floor - Main Area: Filter Change

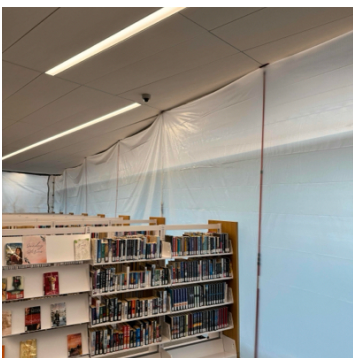




34. Second Floor - Main Area: Temperature And Humidity

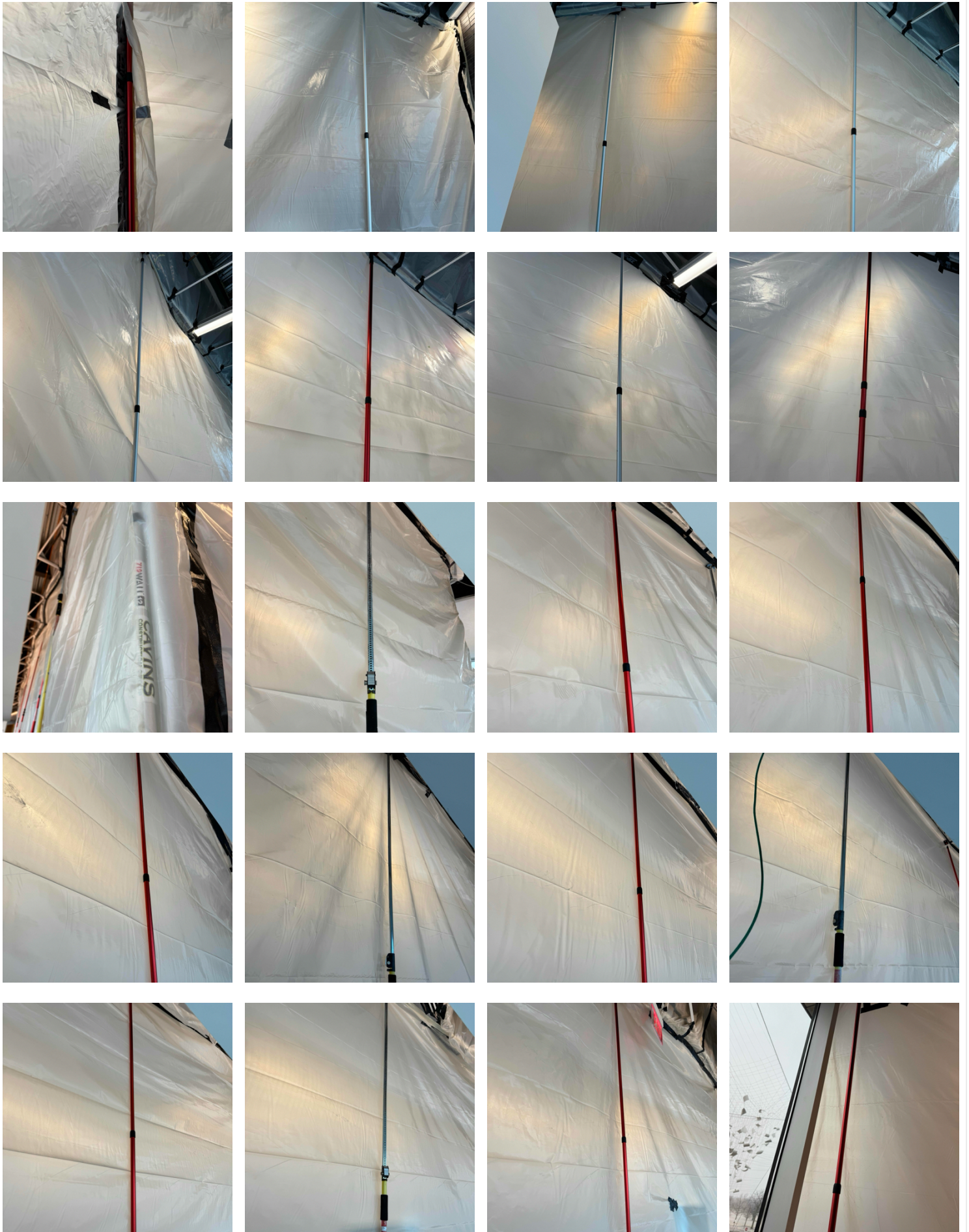


35. Second Floor - Southeast Corner: Containment Upon Arrival/Departure



36. Second Floor - Southeast Corner: Equipment

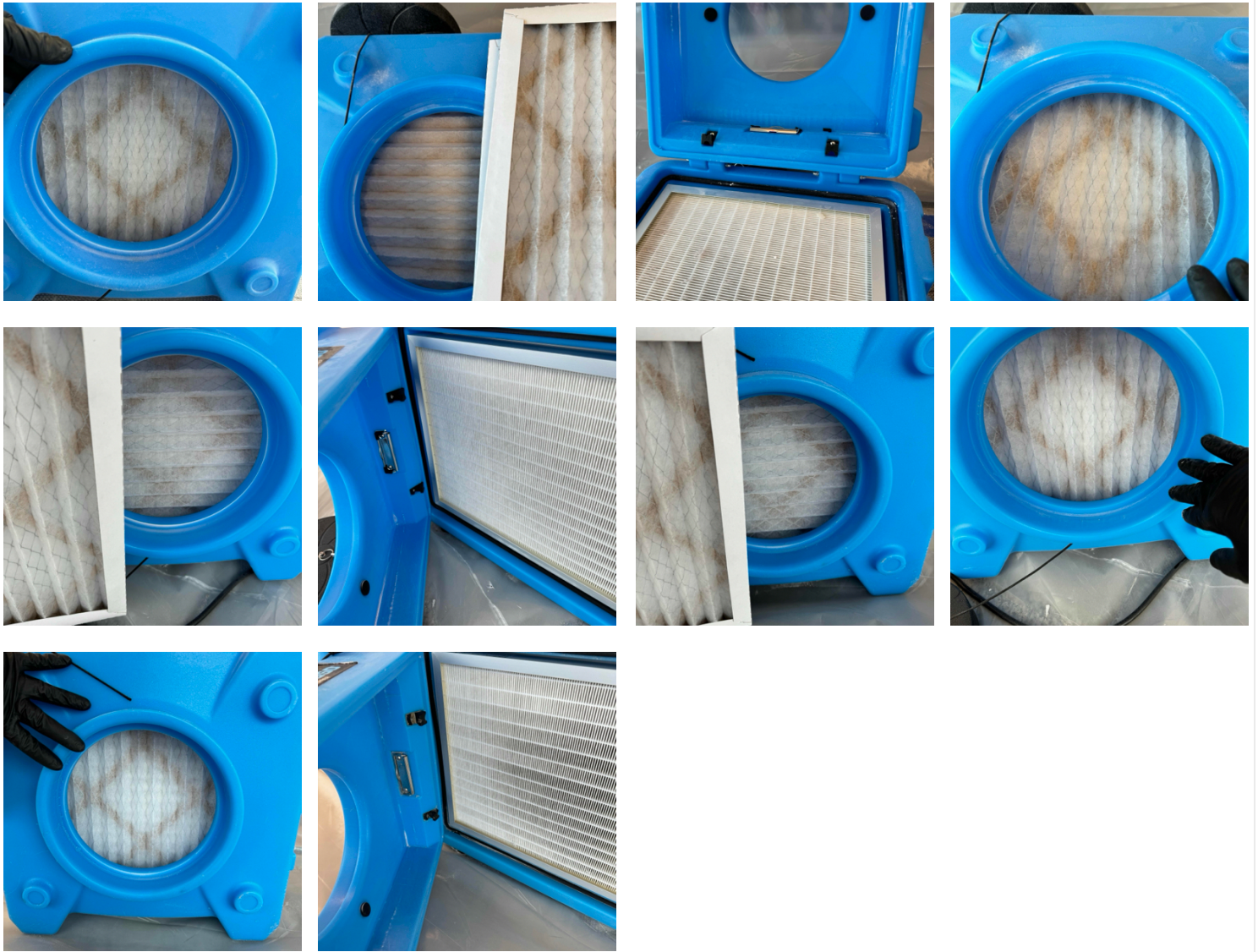
- 22 - Zip Posts
- 6 - Air Scrubbers
- 2 - 50' Extension Cords
- 1 - Debris Hepa Vacuum
- 1 - Fogger





37. Second Floor - Southeast Corner: Filter Change

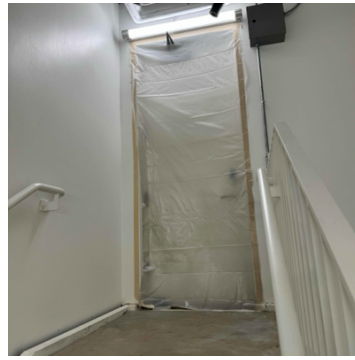




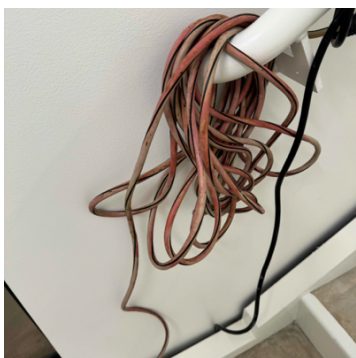
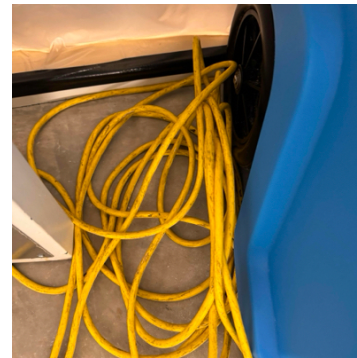
38. Second Floor - Southeast Corner: Temperature And Humidity



39. Stairwell: Containment Upon Arrival/Departure



- 40. Stairwell: Equipment**
 4 - Air Scrubbers
 1 - Zip Post
 2 - 100' Extension Cords
 1 - 50' Extension Cords
 1 - Fogger



41. Stairwell: Filter Change



42. Stairwell: Temperature And Humidity

43. 149 Storytime: Containment Upon Arrival/Departure



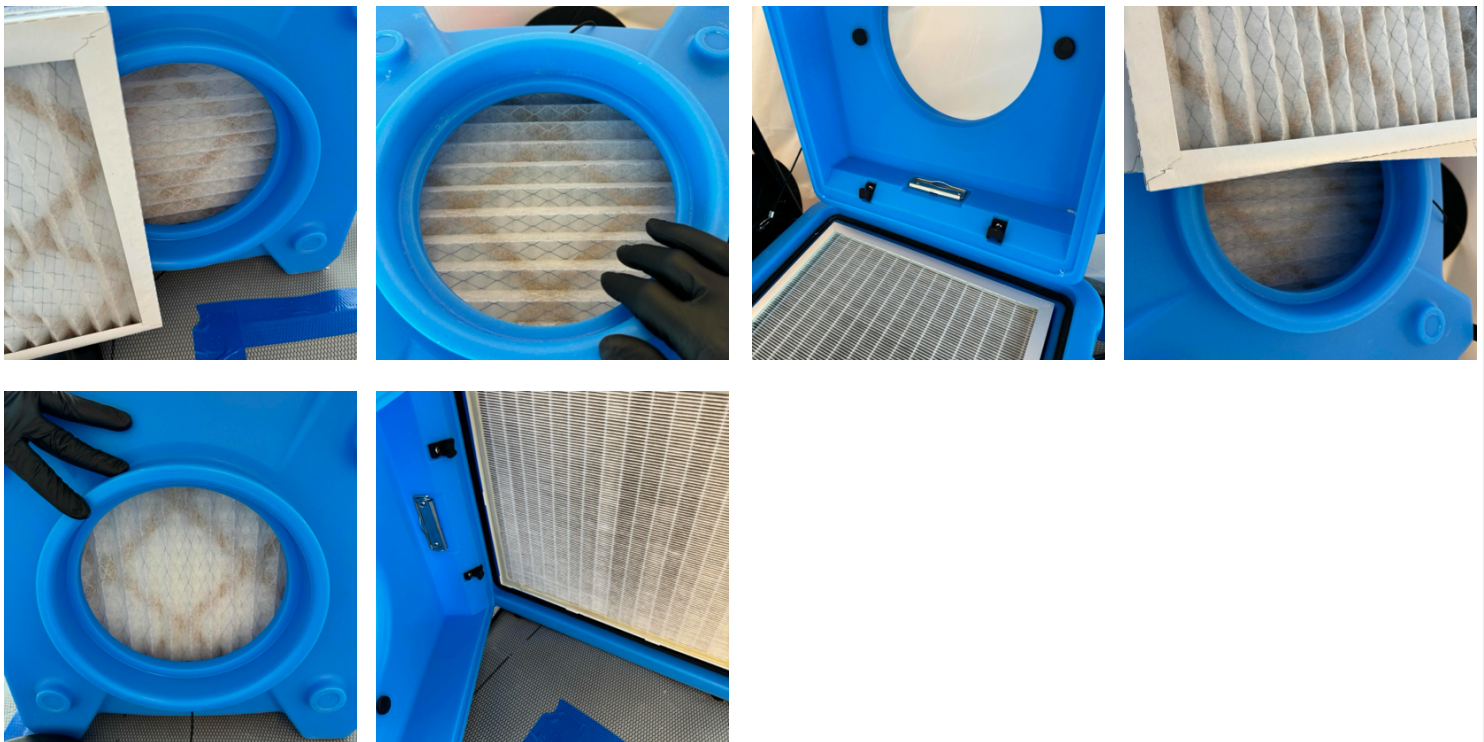
44. 149 Storytime: Equipment

5 - Zip Posts

2 - Air Scrubbers



45. 149 Storytime: Filter Change



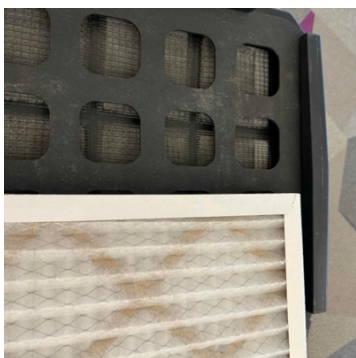
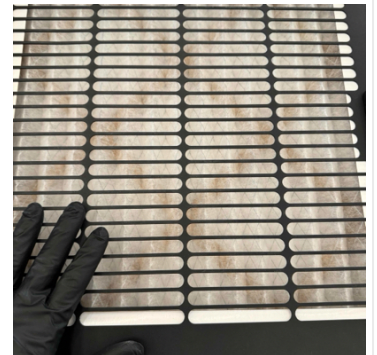
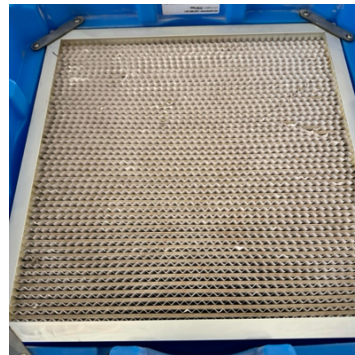
46. 149 Storytime: Temperature And Humidity



47. First Floor - Main Area: Equipment
2 - Air Scrubbers



48. First Floor - Main Area: Filter Change



49. First Floor - Main Area: Temperature And Humidity



- 50. Garage: Equipment**
 - 4 - Air Scrubbers
 - 2 - 50' Extension Cords
 - 1 - 25' Extension Cord
- 51. First Floor - Southwest Vestibule: Equipment**
 - 2 - Air Scrubbers
 - 2 - Zip Posts
- 52. Main Entrance - Children's Area: Equipment**
 - 10 - Zip Post
 - 3 - Air Scrubbers
- 53. Overall Equipment:**
 - 28 - Air Scrubbers
 - 57 - Zip Posts
 - 6 - 50' Extension Cords
 - 2 - 25' Extension Cords