

Date Sat 01/27/2024

Job #

Weather

6:00 AM

34° 

Snow, Rain, Overcast

Wind: 16 MPH | Precipitation: .0" | Humidity: 93%

12:00 PM

34° 

Overcast

Wind: 15 MPH | Precipitation: .0" | Humidity: 93%

4:00 PM

36° 

Overcast

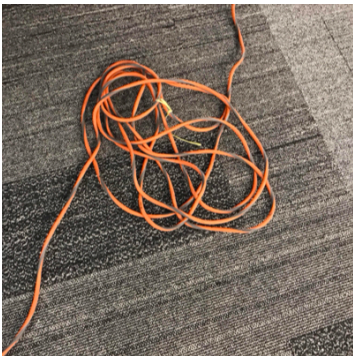
Wind: 15 MPH | Precipitation: .0" | Humidity: 92%

Work Logs

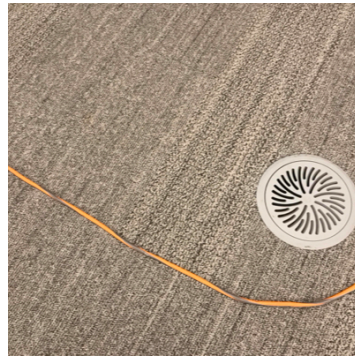
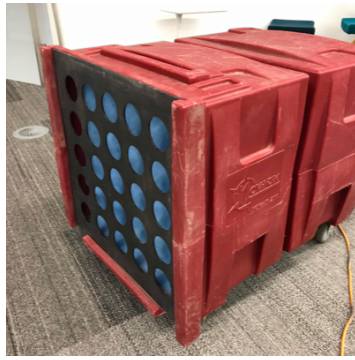
Name	Description
Cavins Environmental	Cavins Group Arrived on site, took Temperature and Humidity readings of affected and main areas and one exterior. Cavins Technician suited up in proper PPE and changed all pre filters in air scrubbers within containments and main areas. Continued cleaning phase in Second Floor - Southeast Corner. Anti-microbial fog treatment was performed in Children's Area main entrance and First Floor - Southwest Vestibule.
Total	

General Notes

1. Third Floor - Main Area: Equipment
 - 1 - Air Scrubber
 - 1 - 50' Extension Cord



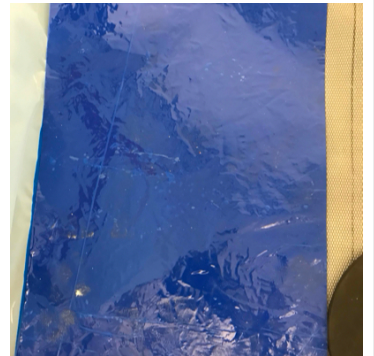
2. Second Floor - Main Area: Equipment
 - 2 - Air Scrubbers
 - 1 - 25' Extension Cord



3. Second Floor - Main Area: Temperature and Humidity



4. 311 Local History: Equipment
2 - Air Scrubbers
1 - Fogger



5. 311 Local History: Filter Change



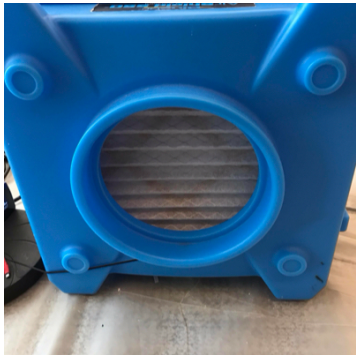


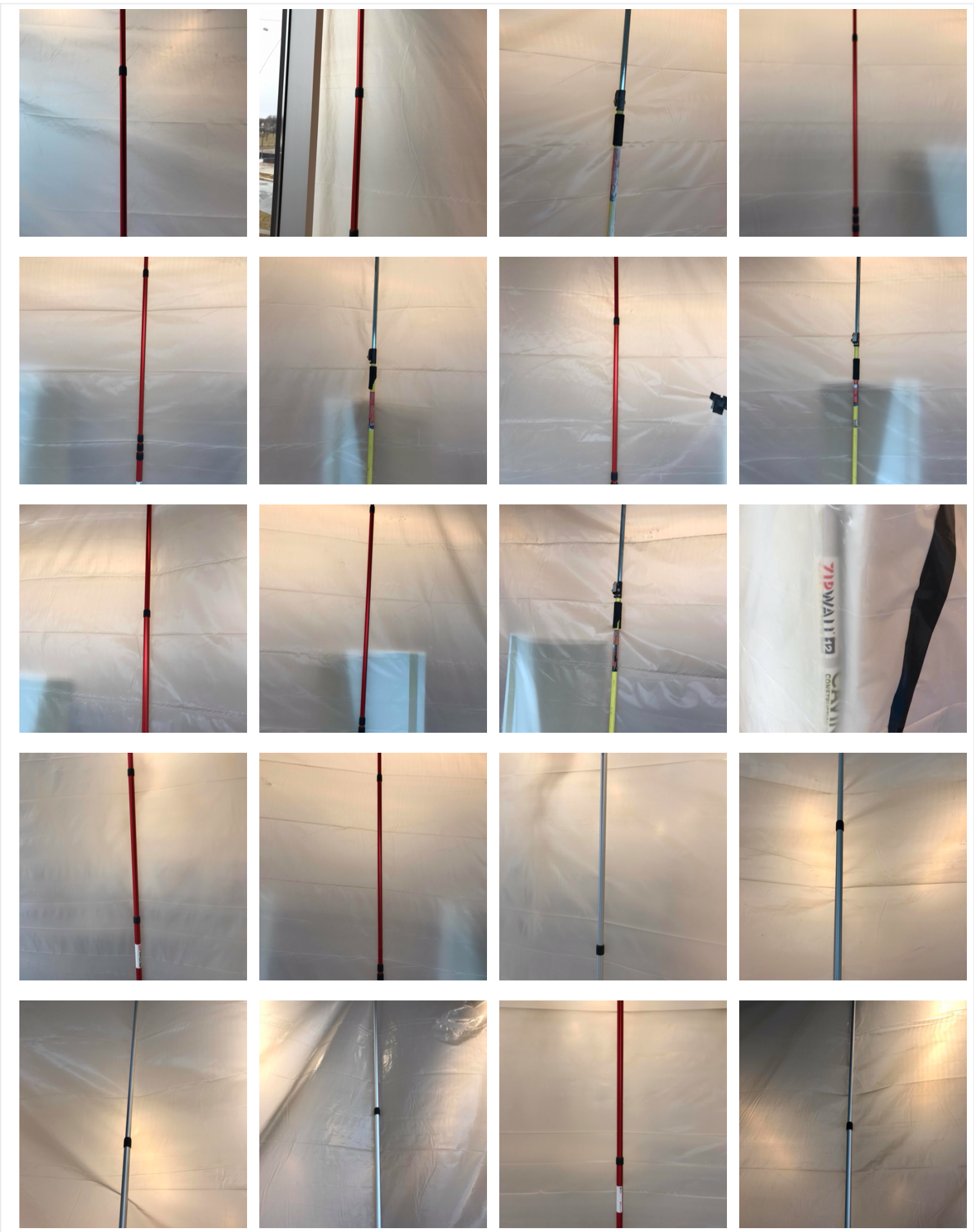
6. 311 Local History: Temperature and Humidity

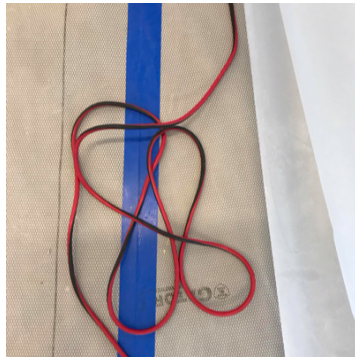
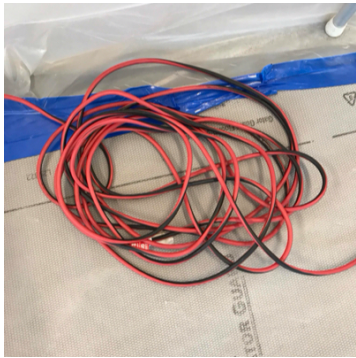
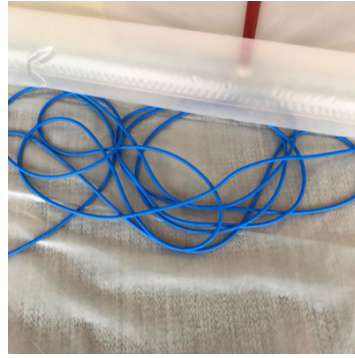


7. Second Floor - Southeast Corner: Equipment

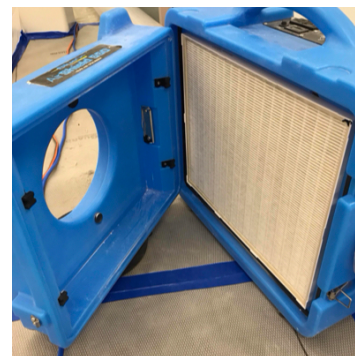
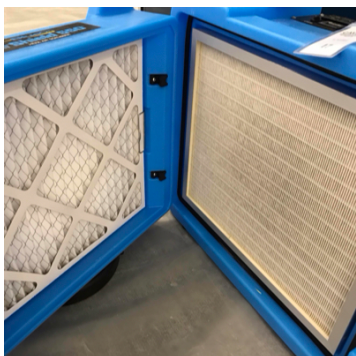
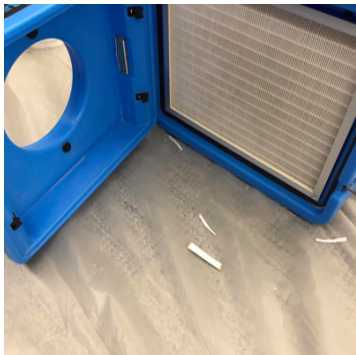
- 6 - Air Scrubbers
- 22 - Zip Posts
- 4 - Hepa Vacs
- 5 - 50' Extension Cords
- 3 - 100' Extension Cords

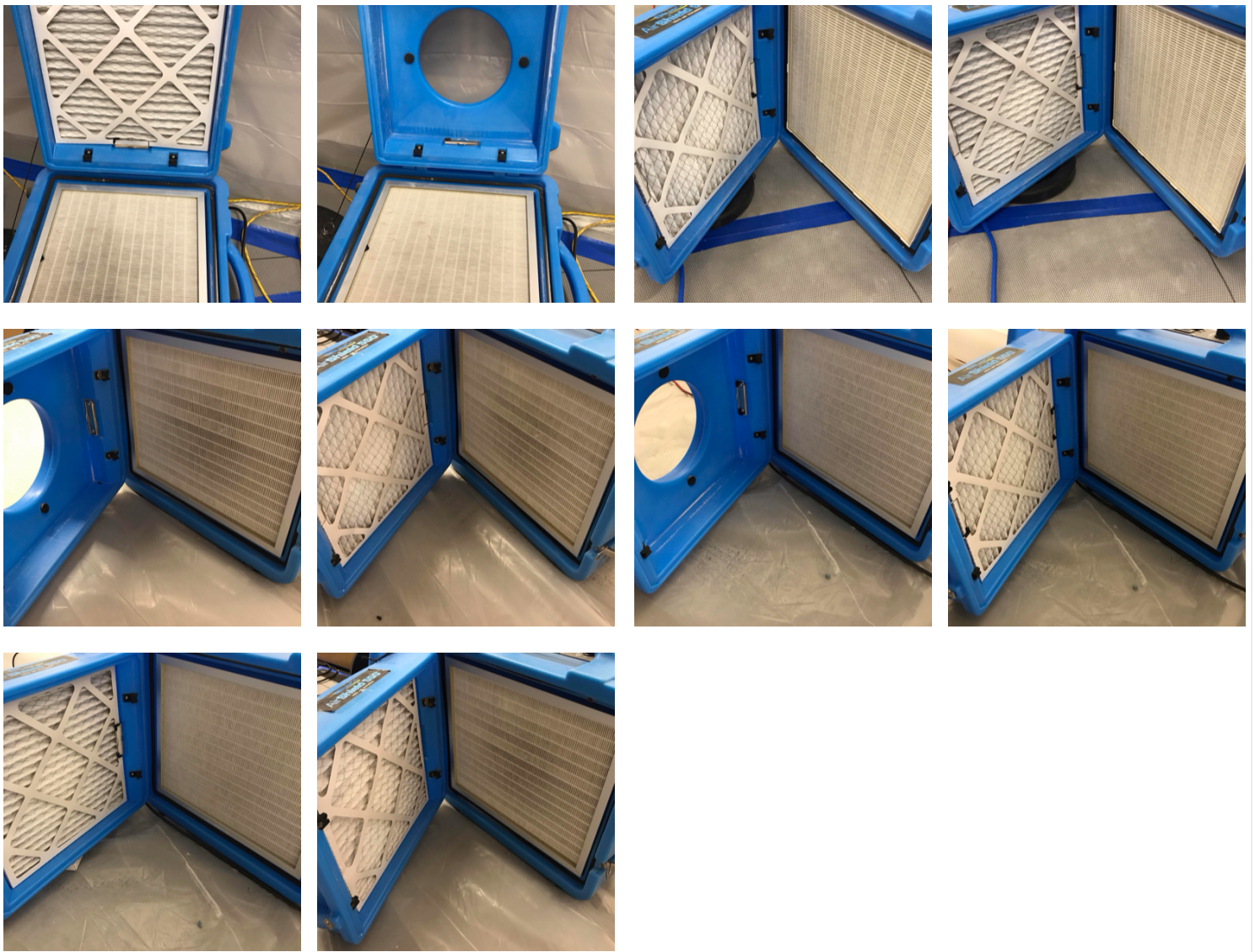




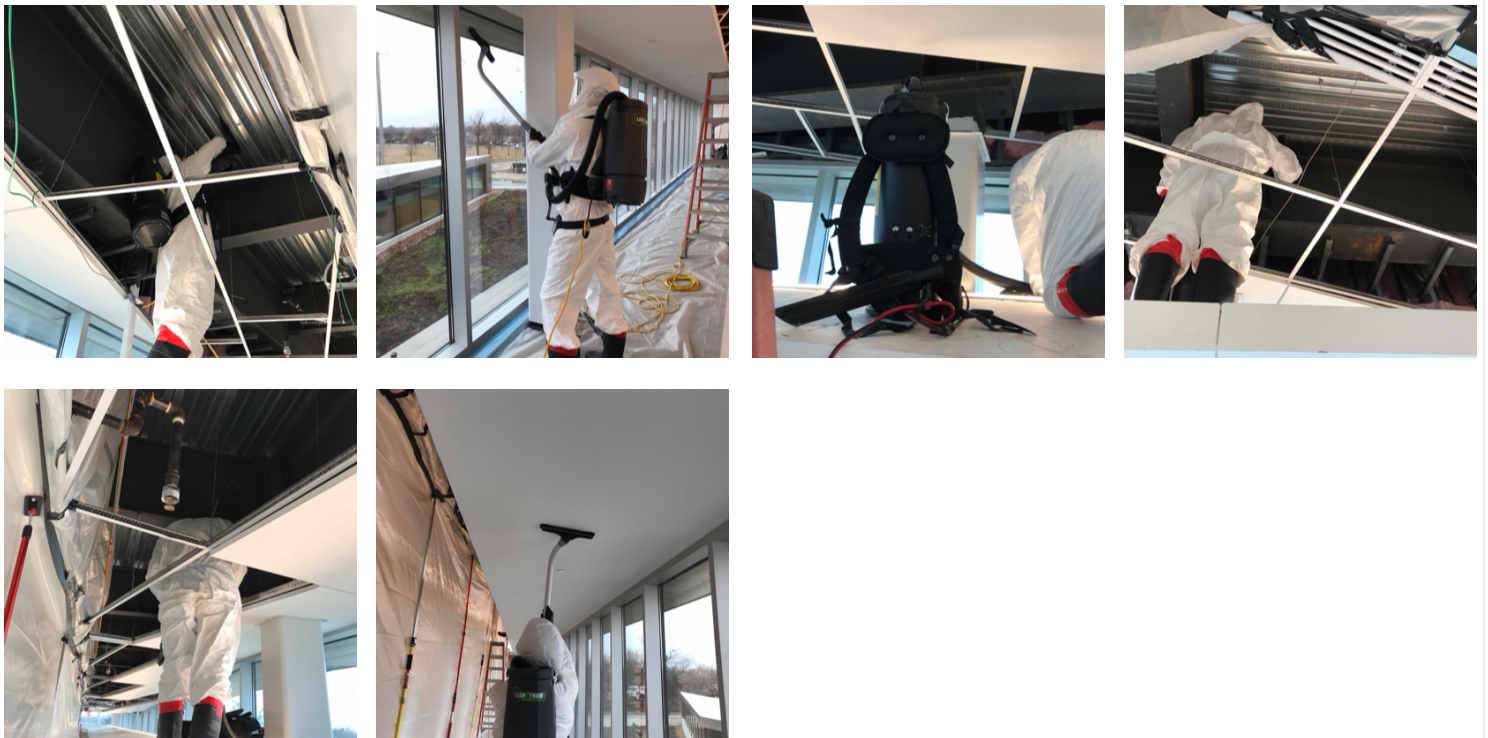


8. Second Floor - Southeast Corner: Filter Change





9. Second Floor - Southeast Corner: Continue Phase 1 Cleaning
Hepa vac all surfaces



10. Second Floor - Southeast Corner: Temperature and Humidity



11. Third Floor - Main Area: Temperature and Humidity



12. 311 Local History: Anti Microbial Fog Treatment



13. 311 Local History: Containment Upon Arrival/Departure



14. Third Floor - Main Area: Filter Change

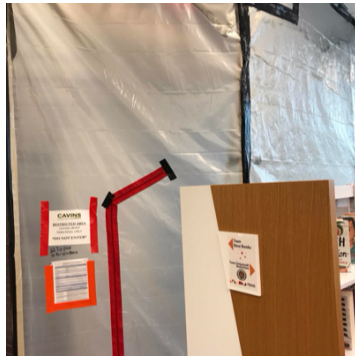


15. Second Floor - Main Area: Filter Change



16. Second Floor - Southeast Corner: Containment Upon Arrival/Departure





17. First Floor - Southwest Vestibule: Containment Upon Arrival/Departure



18. First Floor - Southwest Vestibule: Equipment

- 2 - Air Scrubbers
- 2 - Zip Posts
- 1 - Fogger
- 1 - 50' Extension Cord
- 1 - Hepa Vac



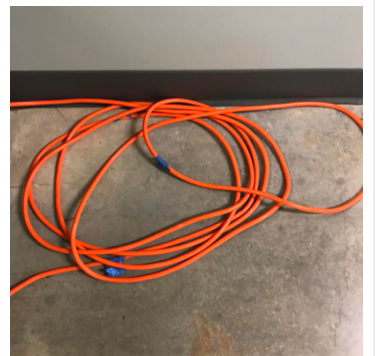
19. First Floor - Southwest Vestibule: Filter Change



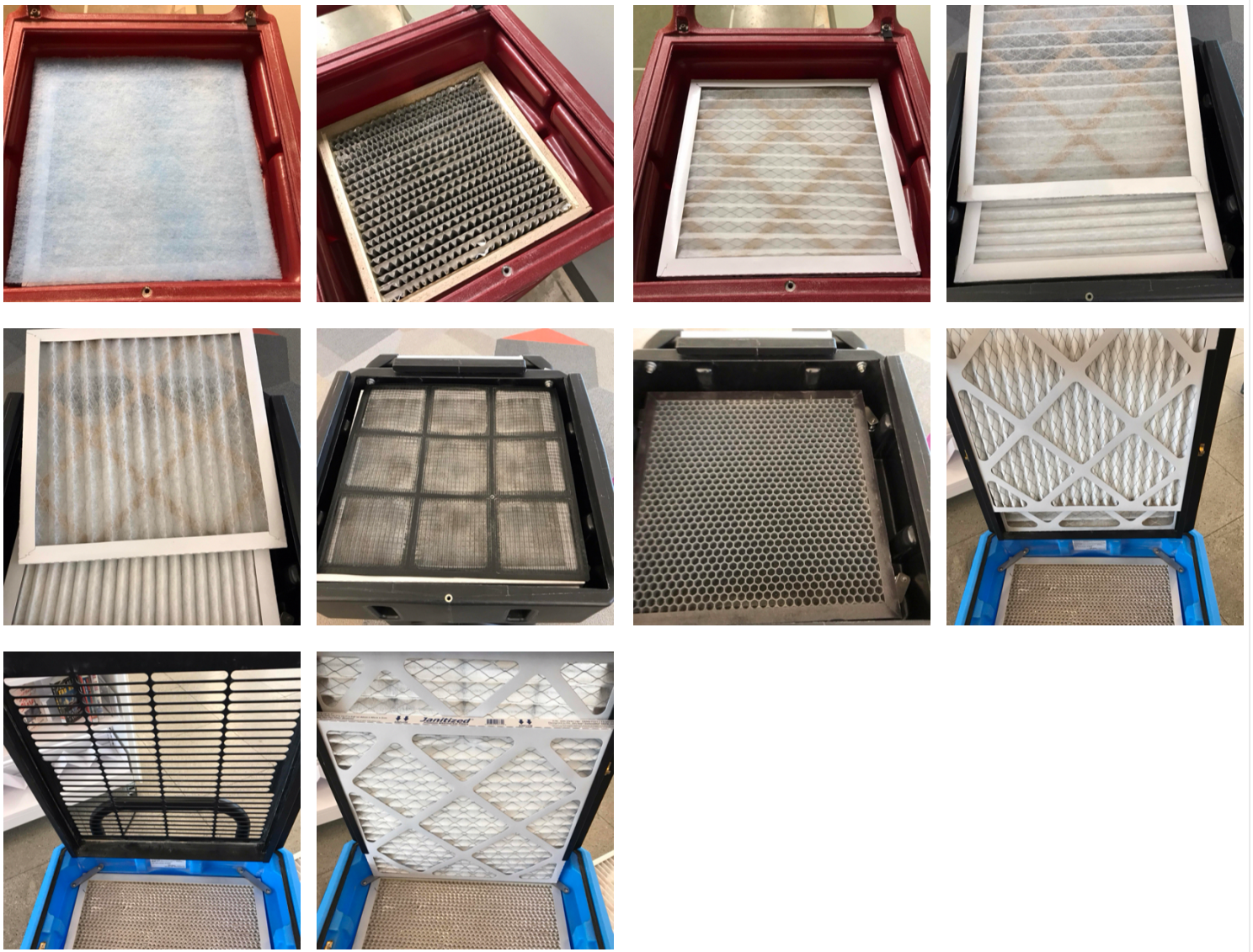
20. First Floor - Southwest Vestibule: Temperature and Humidity



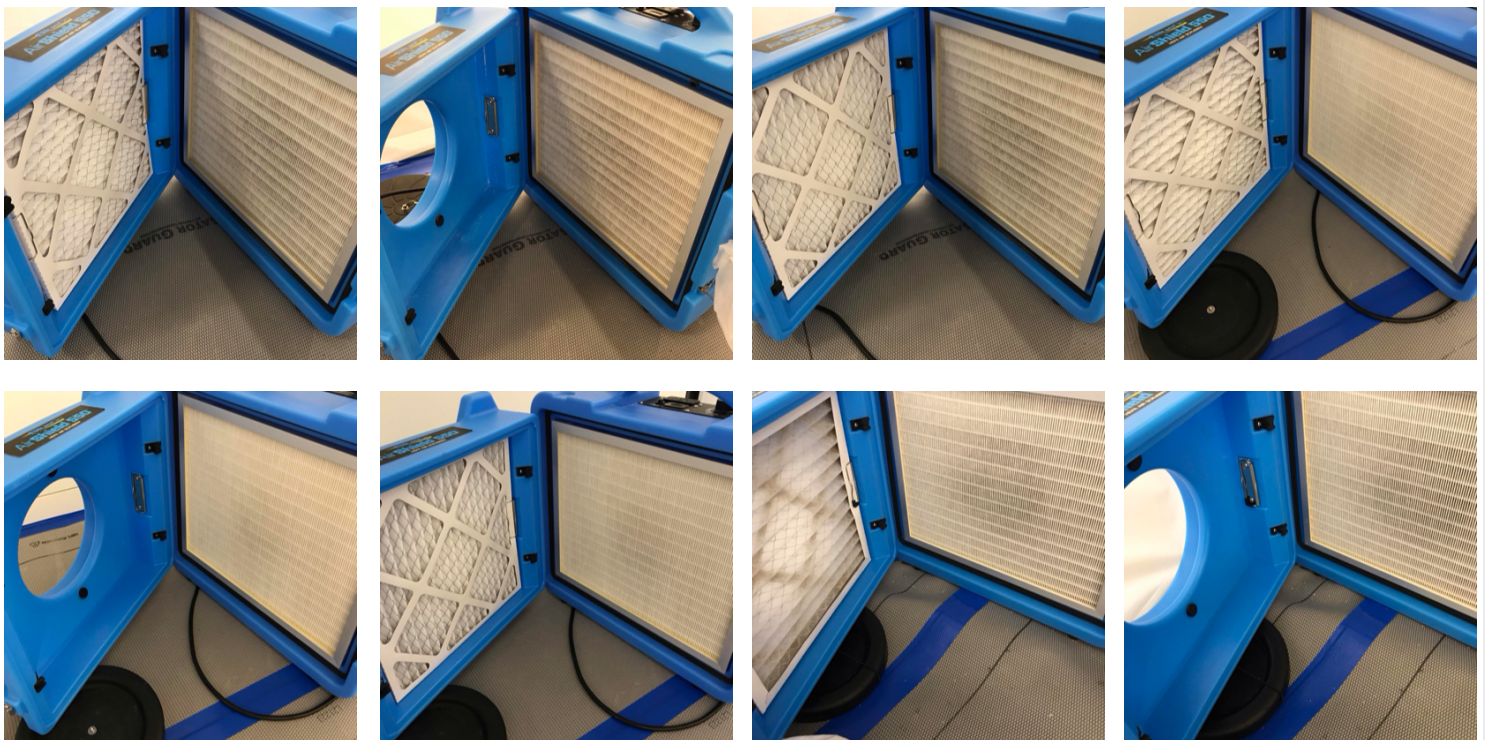
21. First Floor - Main Area: Equipment
 3 - Air Scrubbers
 1 - 25' Extension Cord

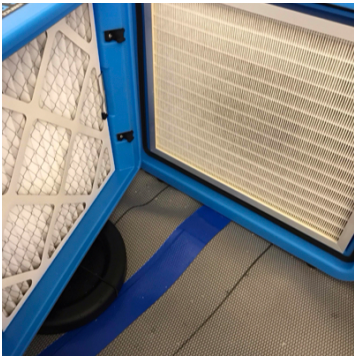


22. First Floor - Main Area: Filter Change



23. Main Entrance - Children's Area: Filter Change





24. Main Entrance - Children's Area: Containment Upon Arrival/Departure



25. Main Entrance - Children's Area: Equipment

- 10 - Zip Posts
- 3 - Air Scrubbers
- 1 - Fogger

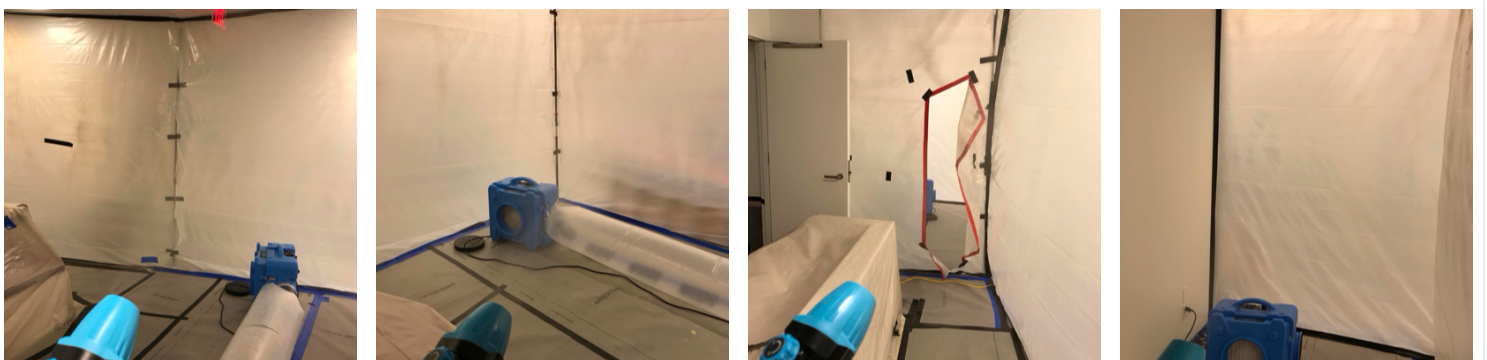




26. Main Entrance - Children's Area: Temperature And Humidity



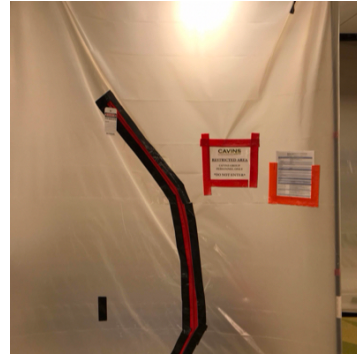
27. Main Entrance - Children's Area: Anti Microbial Fog Treatment



28. First Floor - Bay Windows (Children's Area): Anti Microbial Fog Treatment

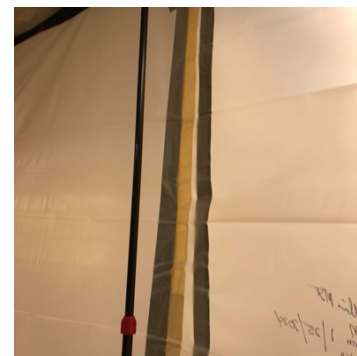
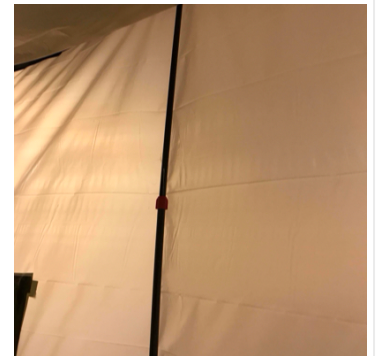


29. First Floor - Bay Window's (Children's Area): Containment Upon Arrival/Departure



30. First Floor - Bay Window's (Children's Area): Equipment

- 12 - Zip Posts
- 4 - Air Scrubbers
- 1 - Fogger (same)
- 1 - 50' Extension Cords





31. First Floor - Bay Window's (Children's Area): Filter Change





32. First Floor - Bay Window's (Children's Area): Temperature And Humidity

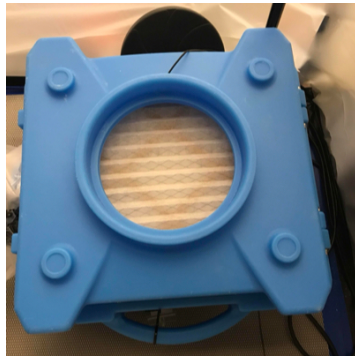


33. 149 Storytime: Containment Upon Arrival/Departure

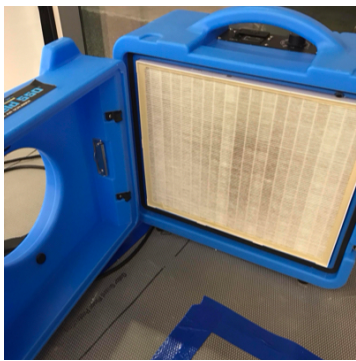
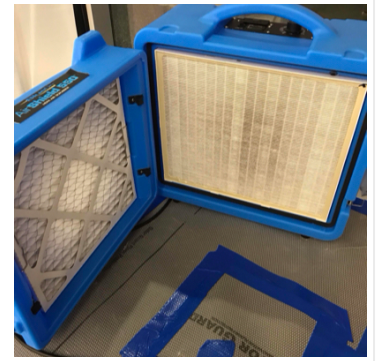
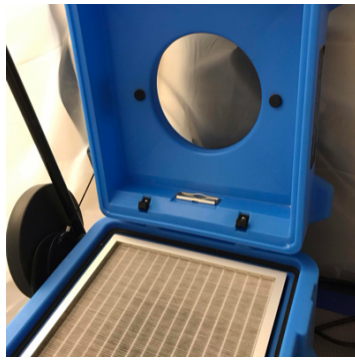


34. 149 Storytime: Equipment
2 - Air Scrubbers
5 - Zip Posts

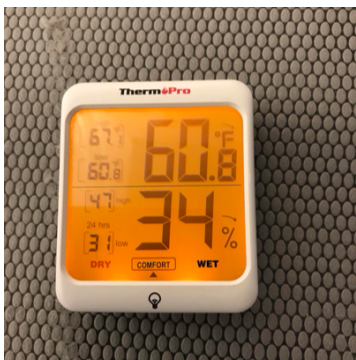




35. 149 Storytime: Filter Change



36. 149 Storytime: Temperature And Humidity



37. First Floor - Main Area: Temperature and Humidity



38. Overall: Equipment

25 - Air Scrubbers

51 - Zip Posts

5 - Hepa Vacs (removed 3 from main entrance childrens area)

3 - Foggers

4 - 100 Ft Extension Cords

7 - 50 Ft Extension Cords (removed 3 from main entrance childrens area and 1 from 1st floor bay windows childrens area)

2 - 25 Ft Extension Cords

2 - 20 Ft Conex

39. Exterior: Equipment

2 - 20 Ft Conex



40. Exterior: Temperature and Humidity

