

Norman Forward Flood Roundabout

1% for Art Selection Process





FOUR PHASES to Art Slection:

1. Project Development
2. Artist/Proposal Selection
3. Fabrication/Installation
4. Public Engagement/Education

1. PROJECT DEVELOPMENT: *This phase can take from 45 days to 1 year*



Convene Project Team which consists of:

- NAC, Architect/Designer, City of Norman Division stakeholder
- Whose tasks are to:
 - Evaluate public art opportunities
 - Determine possible locations from public art

1. PROJECT DEVELOPMENT: *This phase can take from 45 days to 1 year*



Develop the Project Budget – TOTAL Budget is \$200,000

- Artist Award - \$175,000
- 10% Admin - \$20,000
- Selection Process Costs - \$5,000

Public Art Piece in
Center of Multi-
lane Roundabout

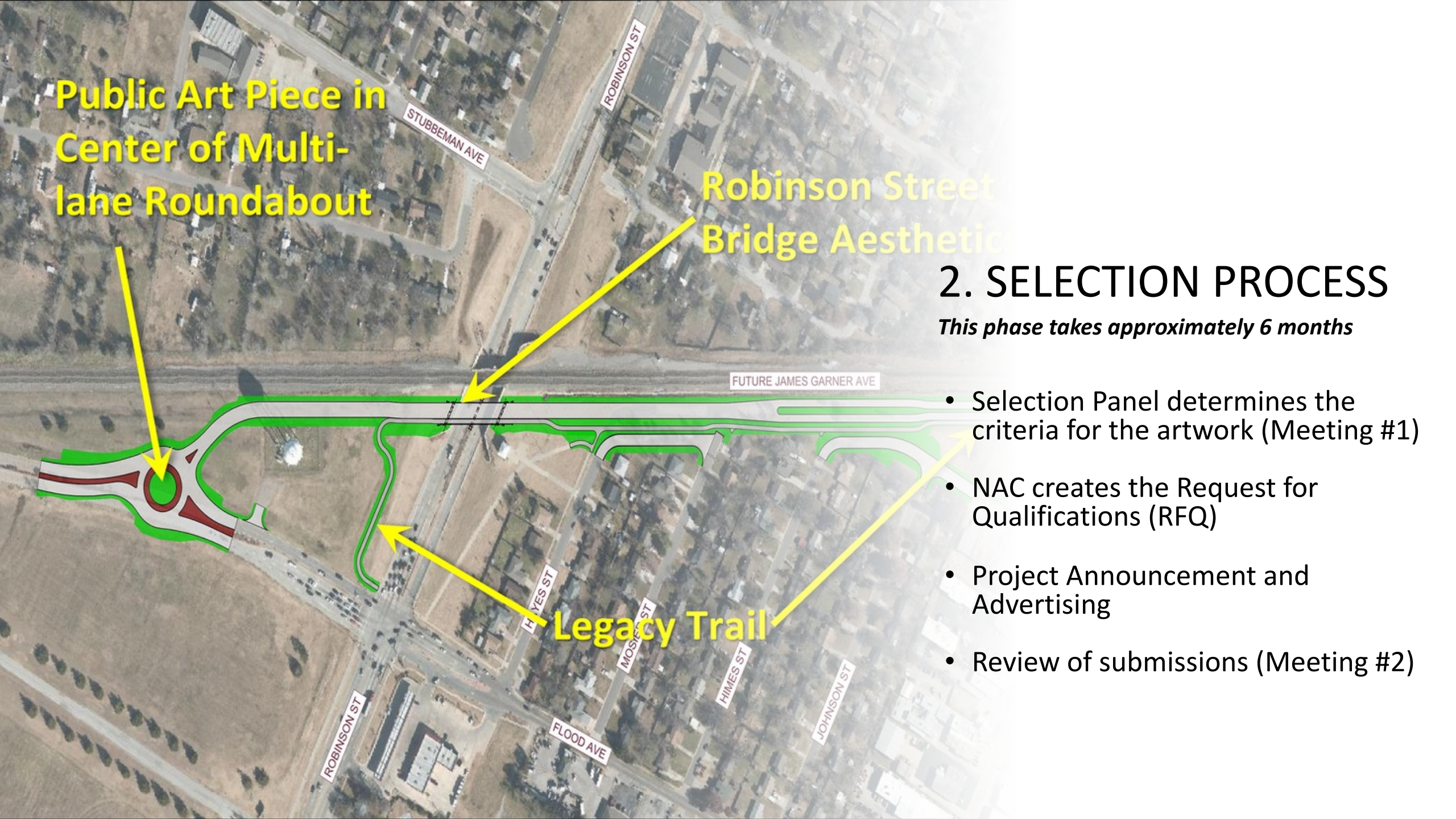
Robinson Street
Bridge Aesthetic

2. SELECTION PROCESS

This phase takes approximately 6 months

- Selection Panel determines the criteria for the artwork (Meeting #1)
- NAC creates the Request for Qualifications (RFQ)
- Project Announcement and Advertising
- Review of submissions (Meeting #2)

Legacy Trail



Public Art Piece in
Center of Multi-
lane Roundabout

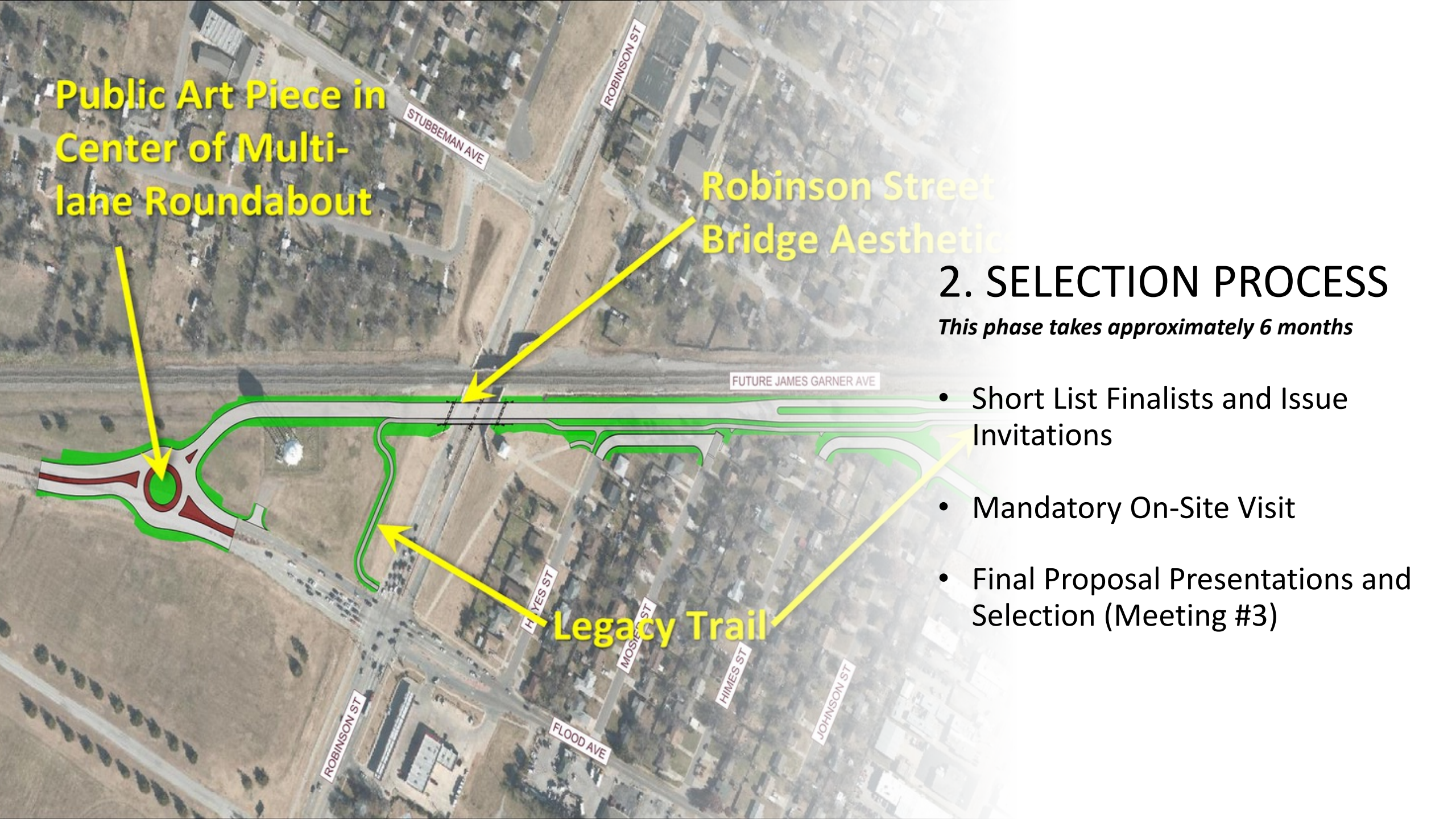
Robinson Street
Bridge Aesthetic

2. SELECTION PROCESS

This phase takes approximately 6 months

- Short List Finalists and Issue Invitations
- Mandatory On-Site Visit
- Final Proposal Presentations and Selection (Meeting #3)

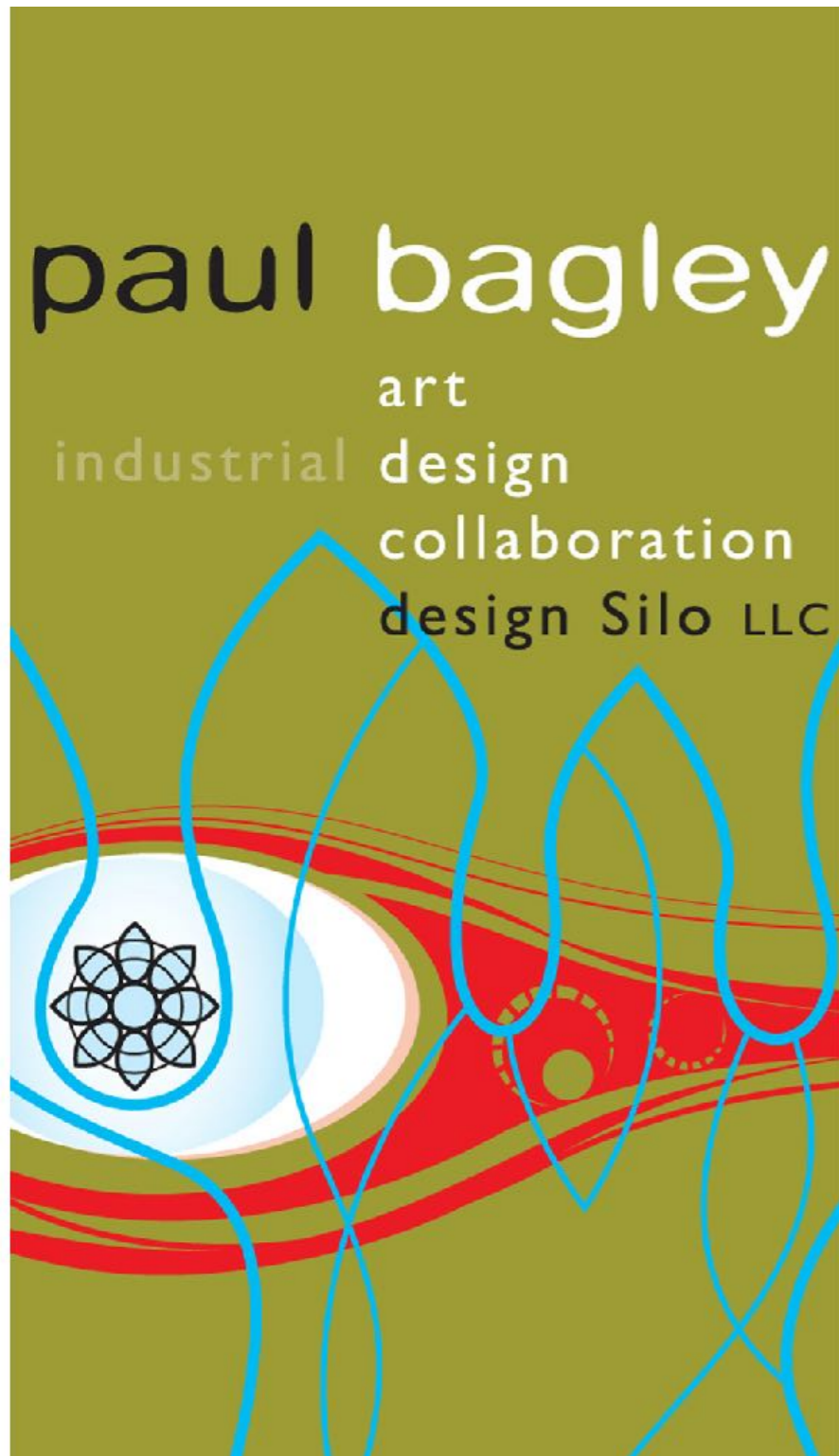
Legacy Trail



Norman Forward Flood Roundabout

1% for Art: Paul Bagley, *Revolution*





Education

1988: B.F.A. Visual Communications: University of Oklahoma School of Visual Arts

1996-2000: The Cosanti Foundation, Arcosanti: Apprentice in Art and Architecture with Paolo Soleri.

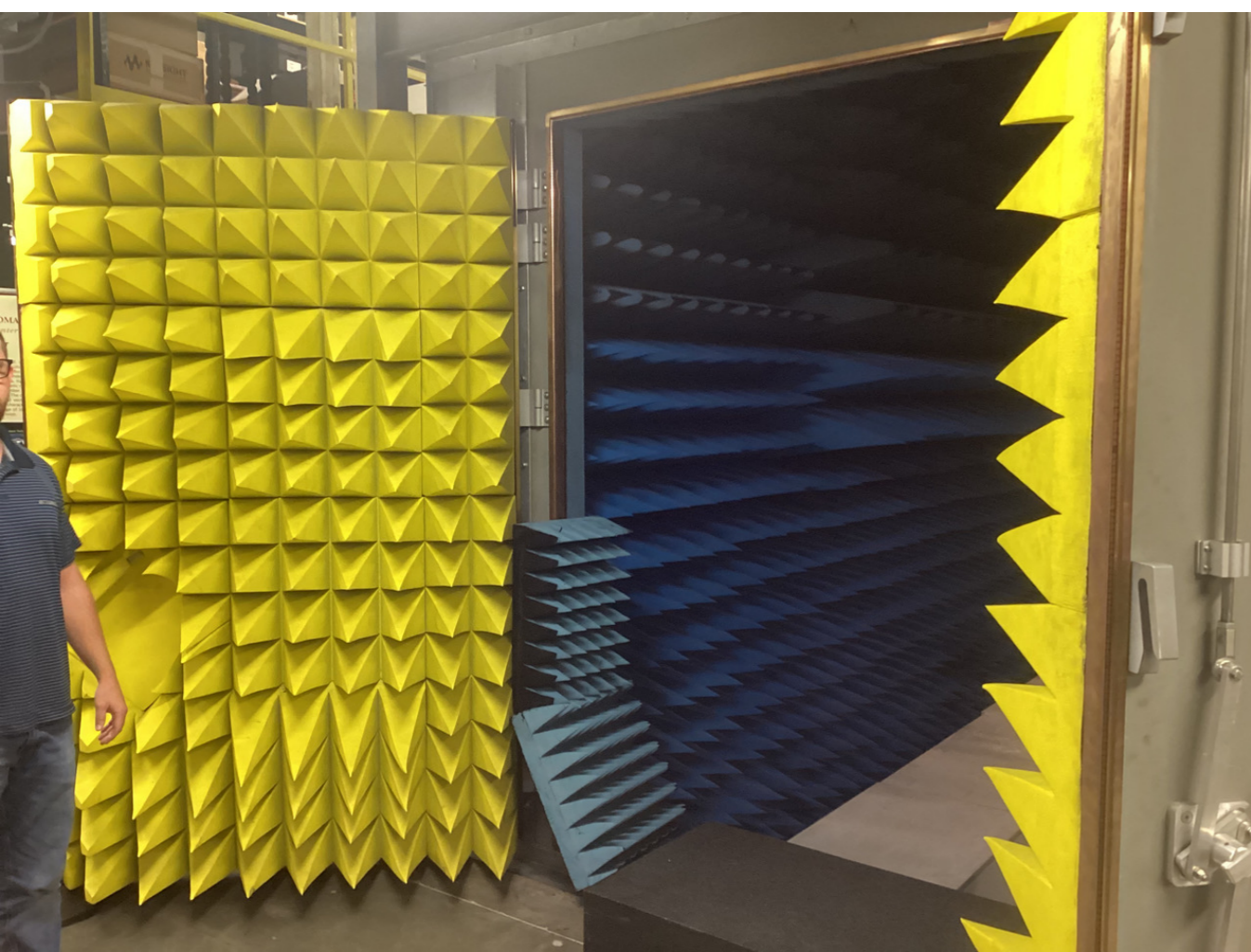
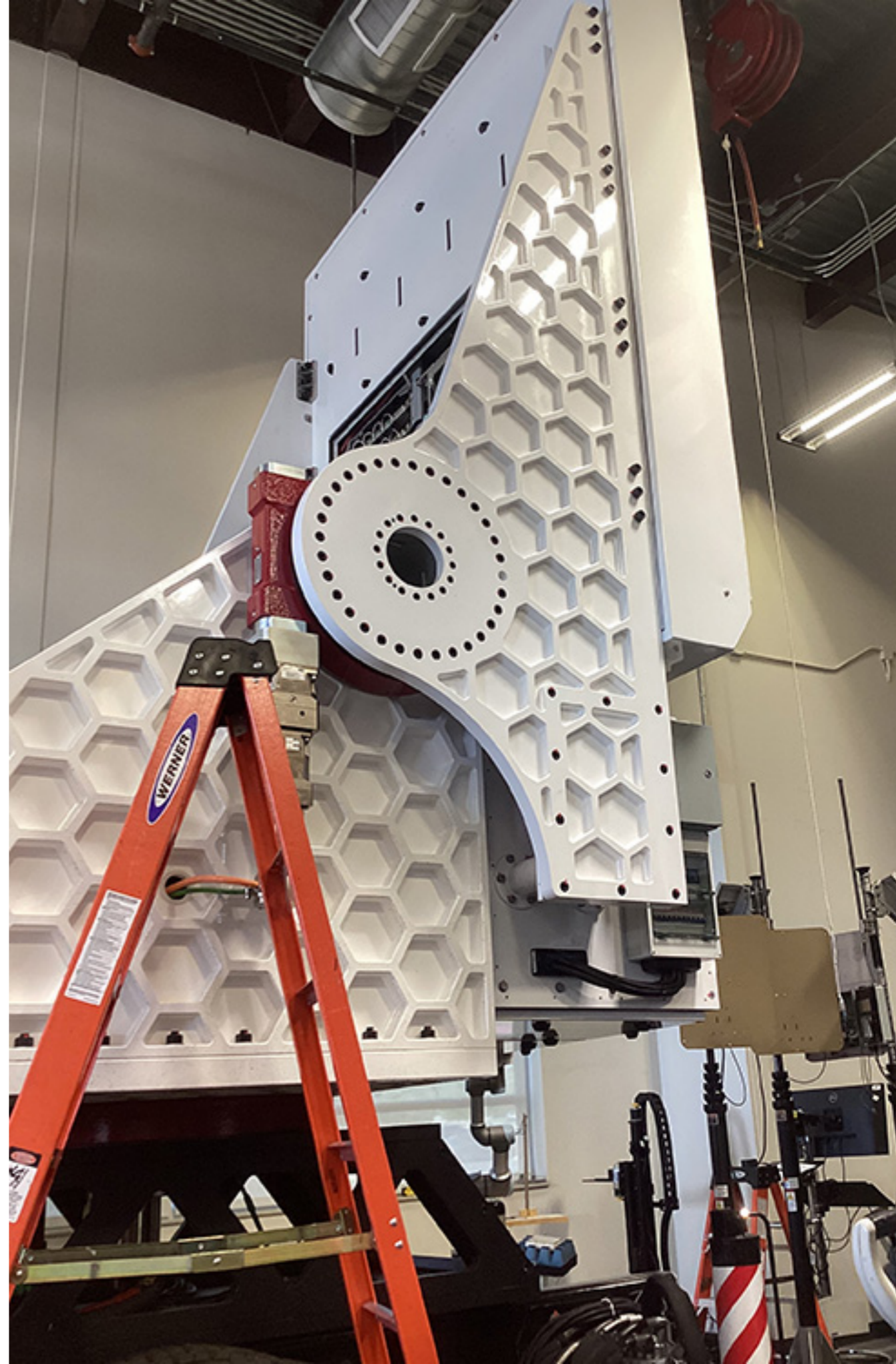
Select Artist Experience

- Fellowship Award (OVAC, OK)
- The Thanatopolis Prize (I-Park, CT)
- BRAF Grant Award, Burning Man (SF, CA)
- OVAC Concept Contemporary Art Exhibition; 2012 and 2020, Hardesty Center, Tulsa, OK
- Finalist: Dallas Love Field Airport Public Sculpture in collaboration with Butzer Architects and Urbanism (SLIVR Offices OKC)
- Public Art Commission: BLOOM, Metro Park, Oklahoma City

Competitions • Awards outside Oklahoma include: AZ, CA, NV, CT, VT, CO, WA, GA, TX







The National Weather Center is one of the largest facilities of its kind in the world, housing twelve University of Oklahoma, state, and federal organizations with more than 650 faculty, researchers, support staff, and students.

The NWC includes NOAA's National Weather Service Forecast Office, Storm Prediction Center, National Severe Storms Laboratory, Radar Operations Center, **Advanced Radar Research Center** (ARRC) OU-NOAA Cooperative Institute for Mesoscale Meteorological Studies, and the School of Meteorology.

The Advanced Radar Research Center (ARRC) is the largest academic radar program in the United States concerning interdisciplinary research and innovative radar technology for

scientific discovery and applied electromagnetics.

Active areas of research include: weather/atmospheric radar, severe storms/hydrometeorology, remote sensing, defense radars/sensors, signal processing/AI/ML, spectrum sharing, applied electromagnetics/antennas, automotive radar, biomedical sensors, UAS, cUAS, rapid prototyping, and microwave/mmW components/packaging.

Principal capabilities of the ARRC include design/prototyping of both large and small, fixed and mobile radar systems; phased array technology; digital signal/array processing; automated algorithms; decision support tools; data assimilation; and end-user training.



NORMAN OKLAHOMA









REVOLUTION

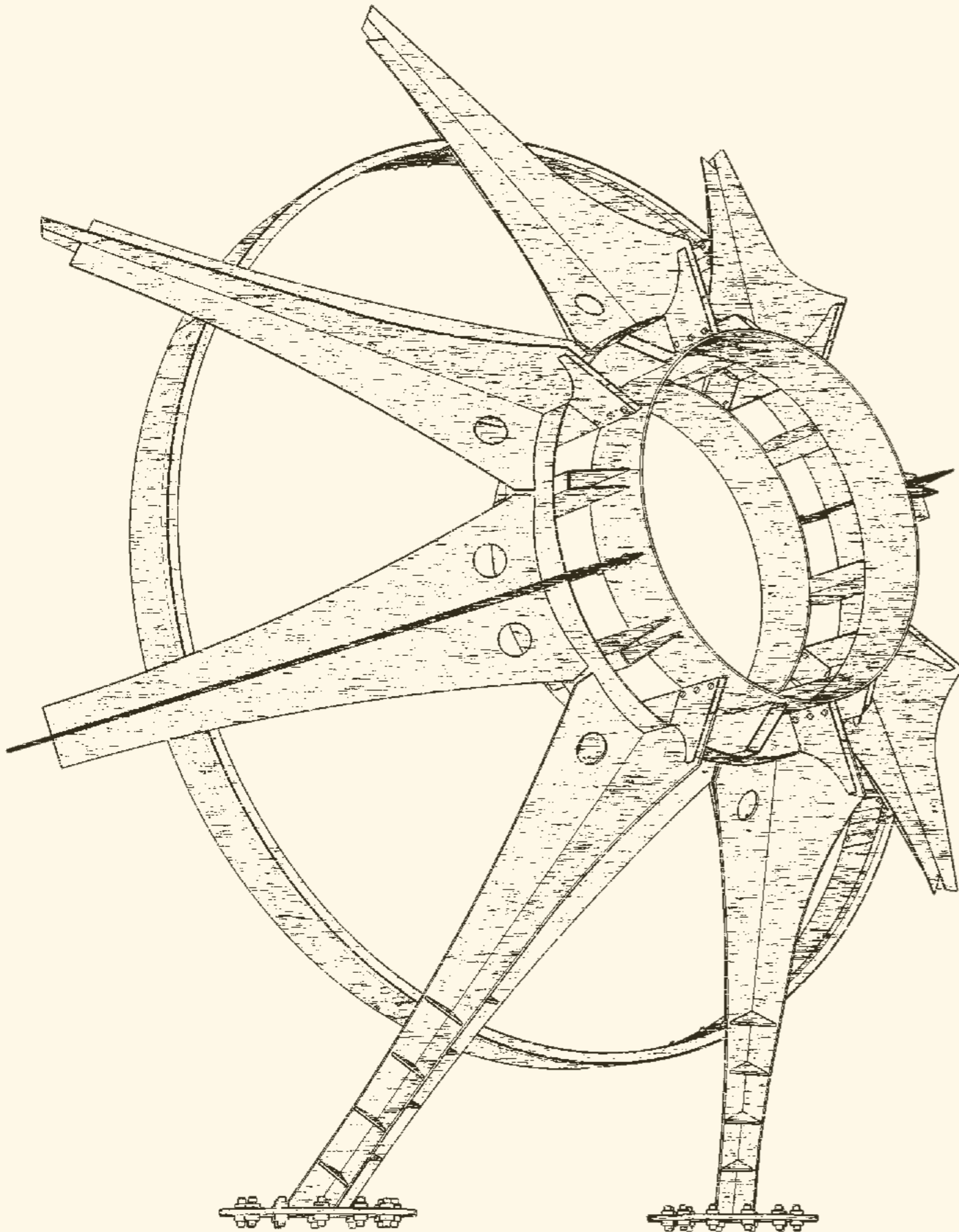








REVOLUTION



Dimensions:

21'-4" x 22' x 7'-7"

Visible concrete slab:

15' x 7' x 6" *

Materials:

Steel plate, fasteners.

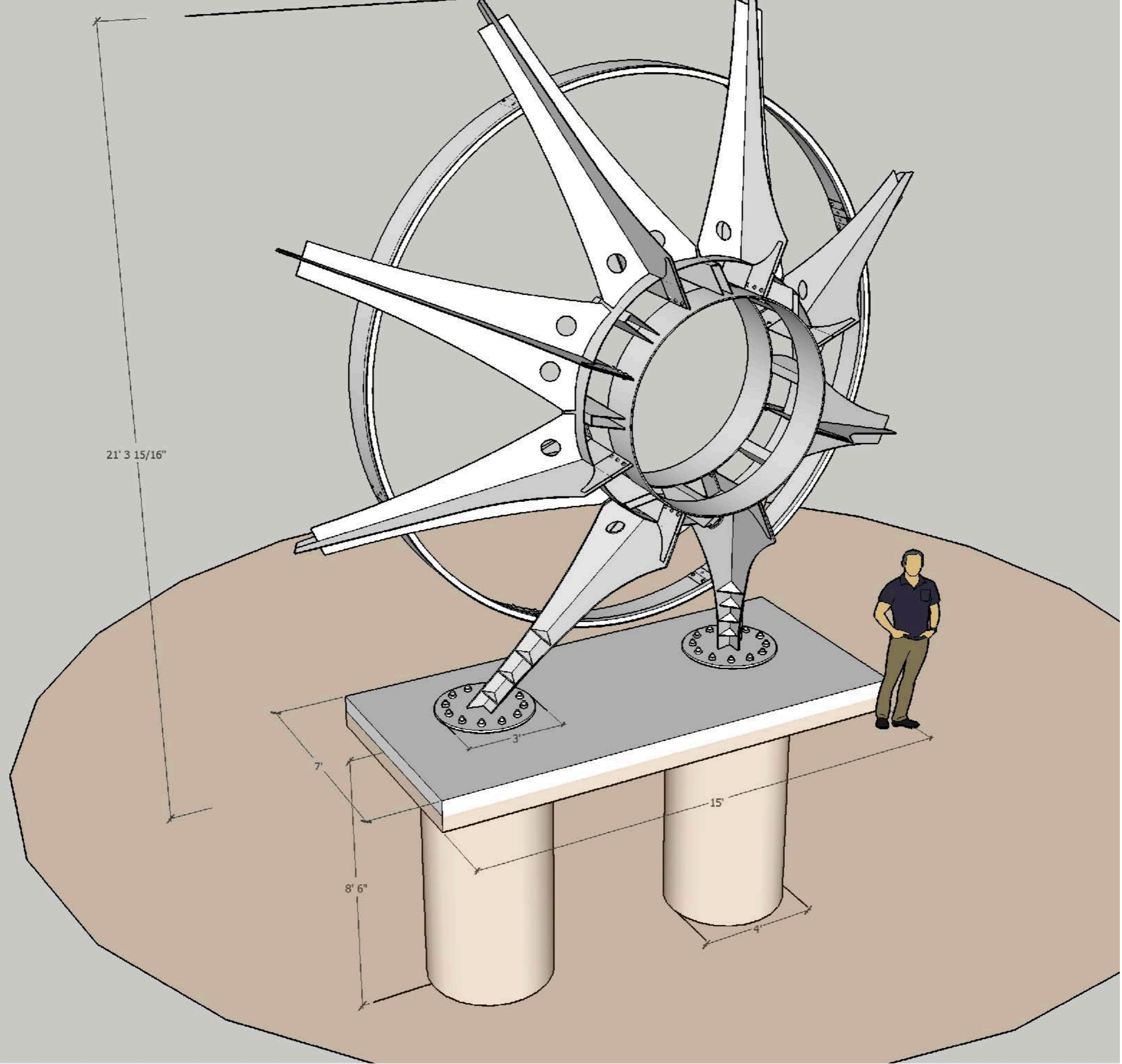
Surface:

Primer, powder coating, clear coating. Anti-Graffiti Powder Coatings from TIGER Drylac: TIGER Drylac® Series 44

Project Narrative

- Site Specific
- Iconic
- Content - Relevance
- Originality
- Duration of concept

* Pedestal is 6" above grade. It can be increased for crash barrier...



21' 3 15/16"

7'

8' 6"

3'

15'

4'



● wheels turning
James Garner's
Firebird



● Epic Traffic Circle
PROGRESS



● wind turbines
Oklahoma Green Energy



● radar systems
air traffic
severe storms



● tornado
season



● turbo prop
turbo fan engines
aeronautical school



● warning sirens

REVOLUTION of...

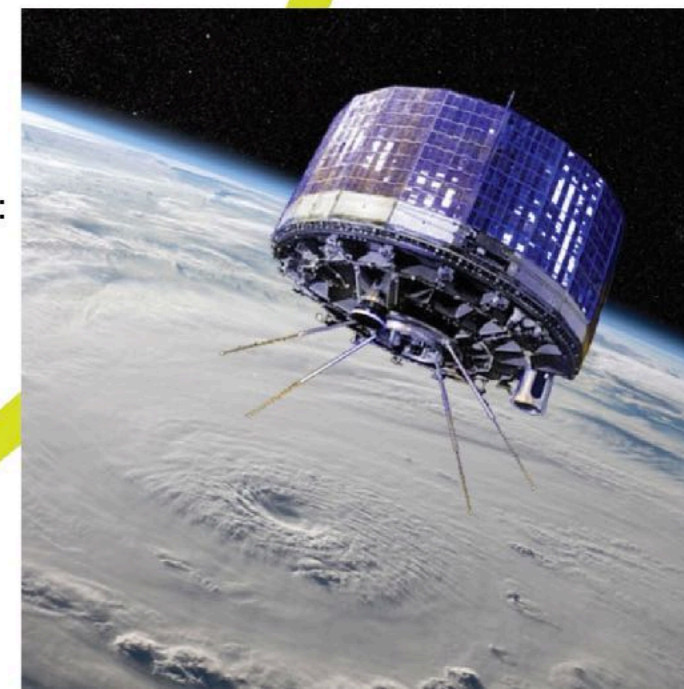
● climate • seasons • annual orbital revolution
with color



● scientific revolution...
basis of western civilization:
PROGRESS



● evoking wonder



Description	Quantity	Unit Price	Cost
Metal: 4x10' x .25" = 9 sheets 4x10' x .5" = 4 sheets 4x8' x .25" = 7 sheets 4x8' x .5" = 2 sheets 4x8" x 1" = 1 sheet ASTM A36 plate, ASTM A500 Grade B Tube	1	\$ 15,000	\$ 15,000
Carbon Steel Fasteners: ASTM A354BD/SAE J429 or ASTM A574 bolts, ASTM A194 nuts, SAE Grade 8 washers. Hot-Dipped Galvanized Steel, ASTM A36, 1"-8 x 18" J-Bolts with Hot-Dipped Galvanized Steel, ASTM A194 Grade 2H Heavy Hex Nuts	1	\$ 4,500	\$ 4,500
Budget for excavation and structural (concrete) foundation plans – footings and pier (approximately 8-6" bury) with monolithic, reinforced foundation on top	1	\$ 10,000	\$ 10,000
Budget for FEA (Finite Element Analysis) and/or CFD (Computational Fluid Dynamics) for structural analysis – gravitational and wind loading.	1	\$ 17,000	\$ 17,000
Budget for powder-coating	1	\$ 20,000	\$ 20,000
Budget for controller, VOLANTE® LED Flood Lighting and installation	1	\$ 10,000	\$ 10,000
Budget for PCMS (Port City Metal Services) – tube laser/laser-cut for stem and fins, rolling	1	\$ 20,000	\$ 20,000
Fabrication labor budget (KCR) Rolled, seam-welded cylinders, 5-axis CNC laser-cut tubing, laser-cut plate patterns, section-rolled tubing, integral alignment geometry on patterns, semi-automatic welding to minimize heat input/distortion of welded modules.	1	\$ 17,000	\$ 17,000
DFM budget (design for manufacturing) (KCR)	1	\$ 2,000	\$ 2,000
Construction Labor, Labor for Pre-Assembly, heavy machinery, logistics	1	\$ 20,000	\$ 20,000
Design, 3D modelling, 3d rendering services, drawings	1	\$ 5,000	\$ 5,000
Admin / overhead (insurance) employment tax and profit	1	\$ 10,000	\$ 10,000
Permitting	1	\$ 100	\$ 100
Stamped drawing for concrete	1	\$ 1,400	\$ 1,400
Boom truck, deliveries, and Installation Labor	1	\$ 8,000	\$ 8,000
Creative fee	1	\$ 10,000	\$ 10,000
Contingency	1	\$ 5,000	\$ 5,000
Total			\$ 175,000