



1839 Atchison Drive
Norman
OK
USA

Norman Public Library - Central 09.24

Claim Id

City of Norman - Central Library -
9/22/24

Date of Loss

Sep 22, 2024

Date Claim Created

Sep 22, 2024

Type of Loss

Water

Address

103 West Acres Street, Norman, OK,
USA

Policyholder Name

City Of Norman - Central Library

General Notes

9/22/24 - Exterior Humidity and Temperature Readings



9/22/24 - First Floor Main Area Humidity and Temperature Readings



9/22/24 - Second Floor Main Area Humidity and Temperature Readings



9/22/24 - Third Floor Main Area Humidity and Temperature Readings



9/22/24 - Total Equipment

- 13 - Dehumidifiers
- 27 - Axial Fans

Structure: Main Building

Details: None

Address: None

Main Building: Exterior

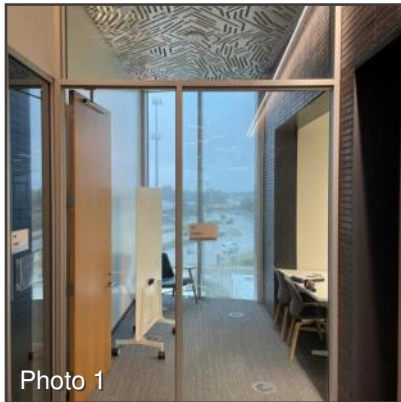
Room Notes: Exterior

9/22/24 - Exterior Humidity and Temperature Readings



Main Building: 307 Literacy

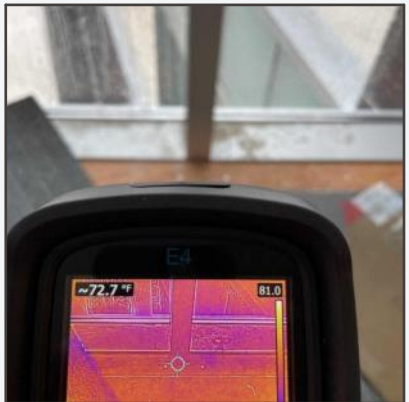
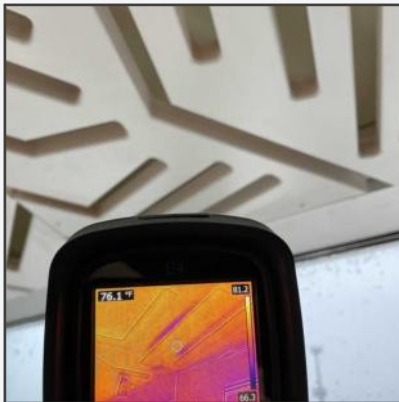
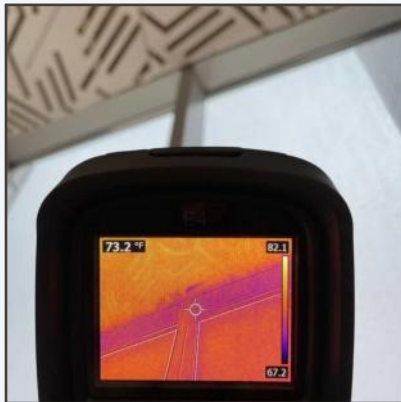
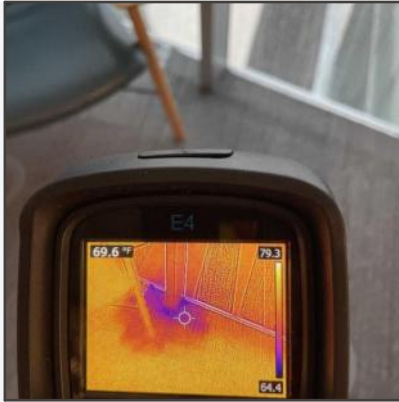
Overview Photos: 307 Literacy



Room Notes: 307 Literacy

9/22/24 - Thermal Scan

Carpet tiles show moisture around base of center column. Underlying materials dry, technician removed carpet tiles from area.

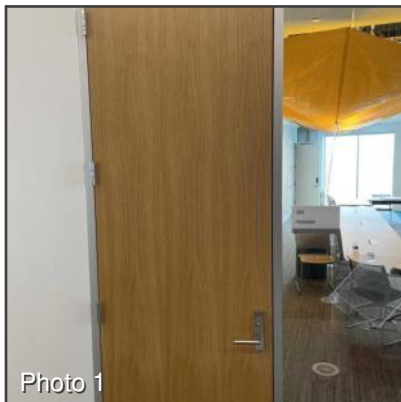


9/22/24 - Visible Water Droplets



Main Building: 305 Pioneer

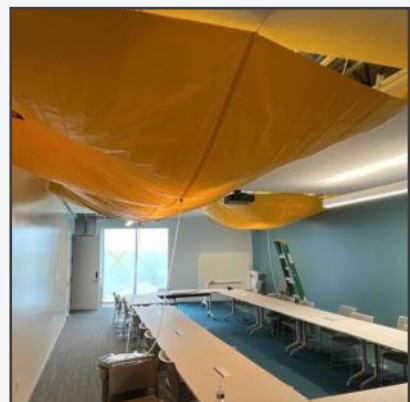
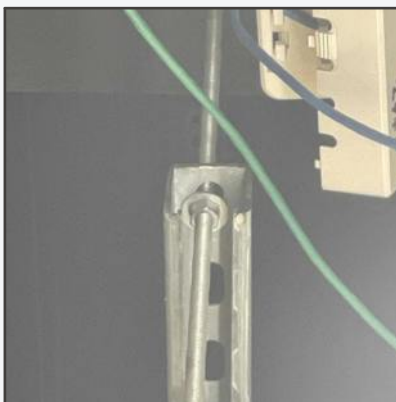
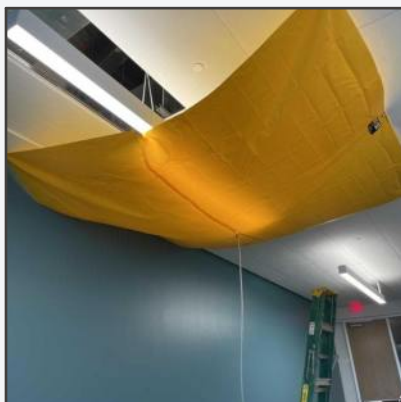
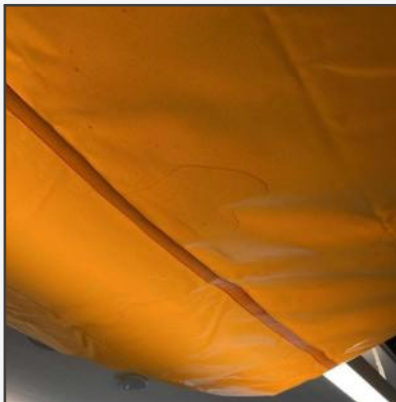
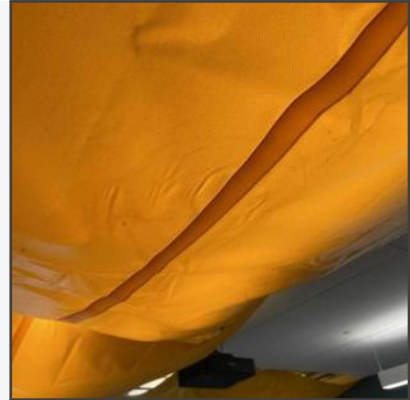
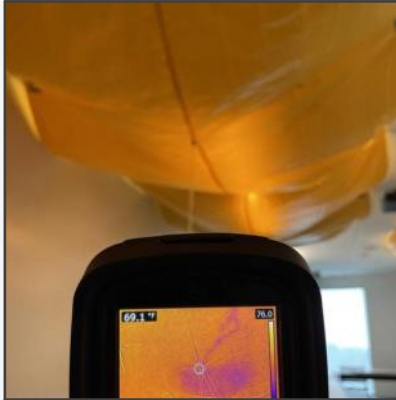
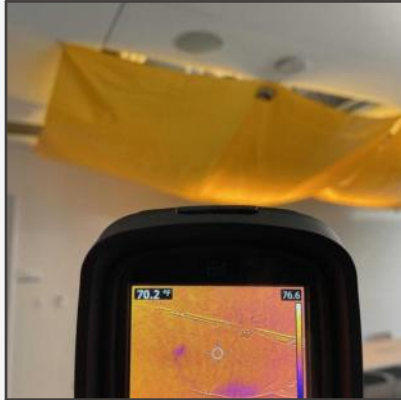
Overview Photos: 305 Pioneer



Room Notes: 305 Pioneer

9/22/24 - Moisture Diversion Tarps

Active dripping into SW diversion tarp, near entrance door, and NE diversion tarp.



9/22/24 - Water Intrusion above SW Tarp



9/22/24 - Water Intrusion above NE tarp



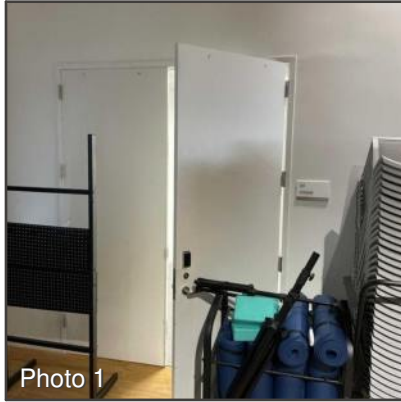
9/22/24 - Thermal Scan

Active intrusion SE corner of room, exterior wall.



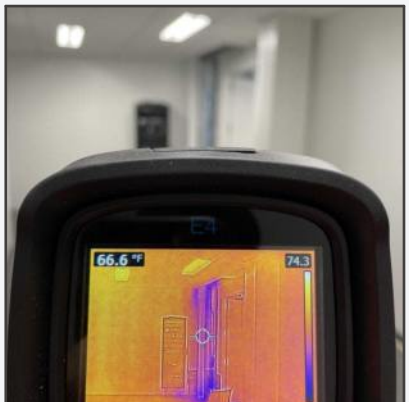
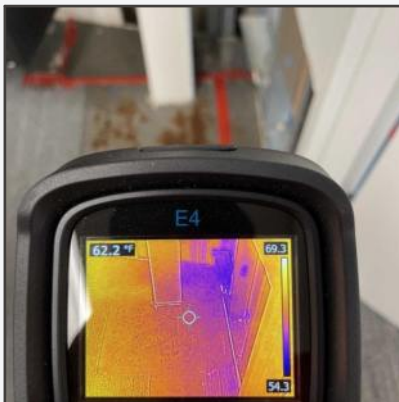
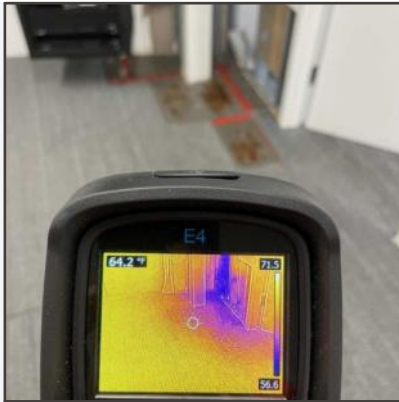
Main Building: 303 Storage

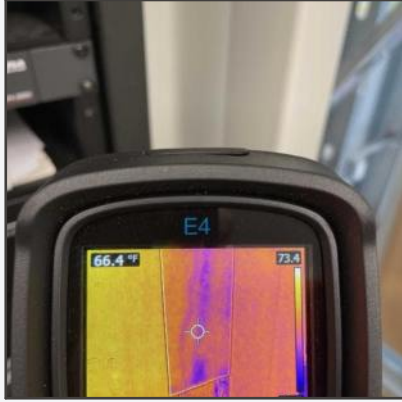
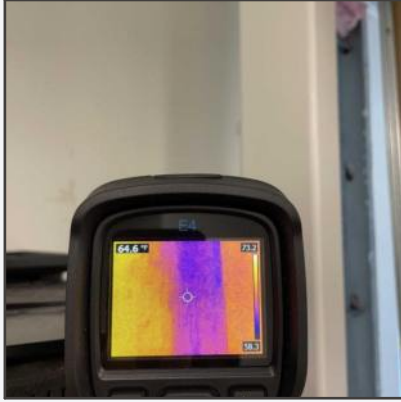
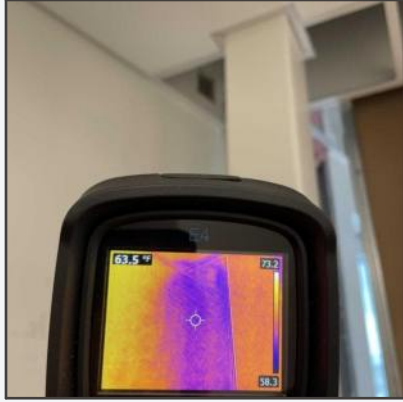
Overview Photos: 303 Storage



Room Notes: 303 Storage

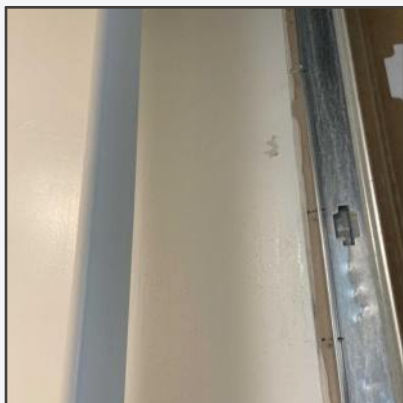
9/22/24 - Thermal Scan





9/22/24 - Water Intrusion

From above support column, water trails down column and drywall.

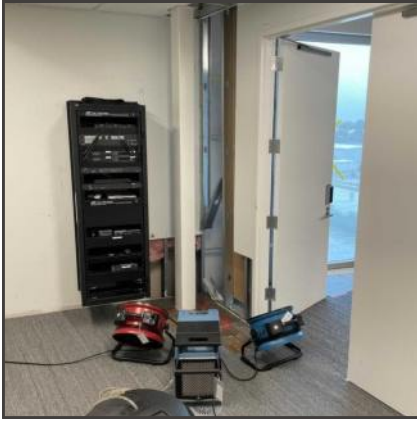


9/22/24 - Equipment

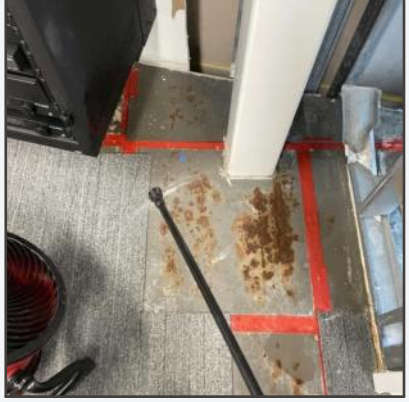
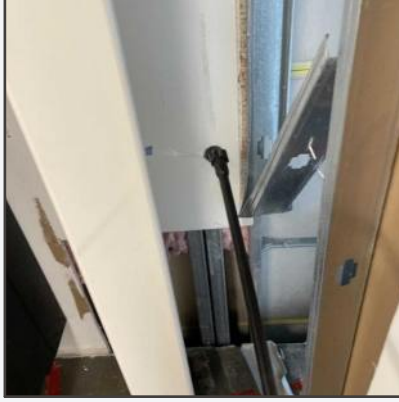
- 1 - Dehumidifier
- 2 - Axial Fans



9/22/24 - Equipment Layout



9/22-24 - Anti-microbial Treatment



9/22/24 - Moisture Log

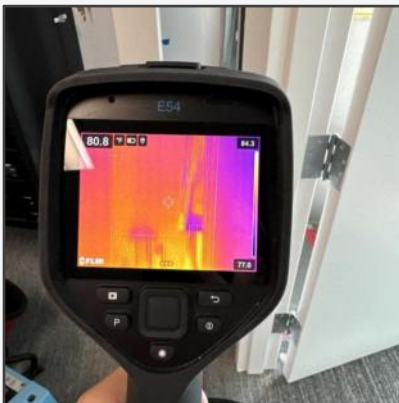
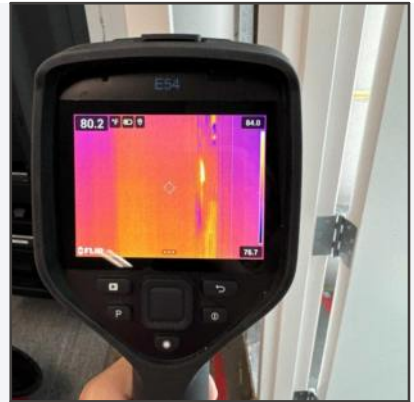
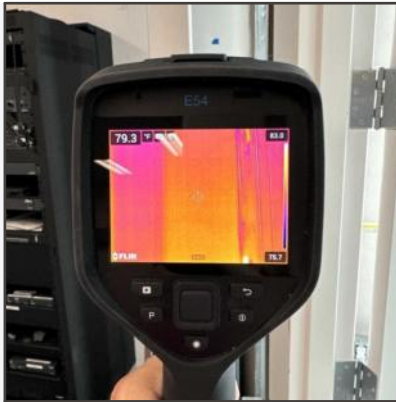
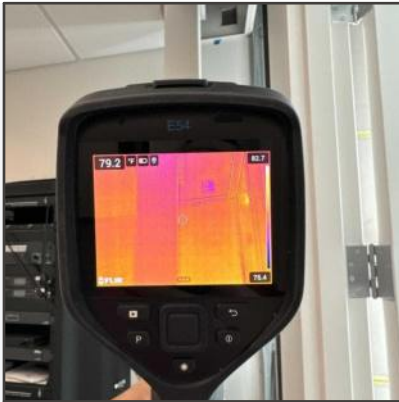
Job Address: _____ City: _____ State: _____ Zip: _____

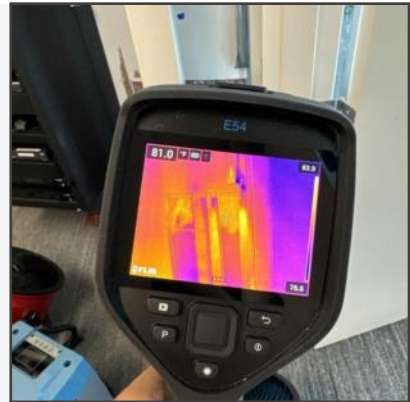
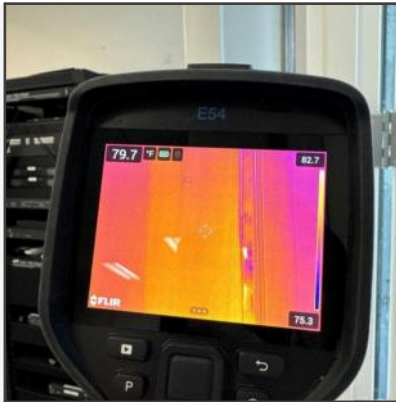
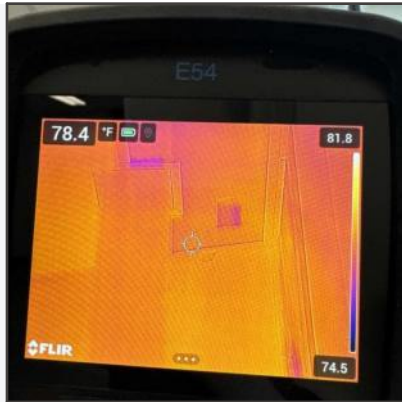
Contact Information for Site Access:
 Name: 303 Storage Cell: _____

Pictures must be taken of each reading. The same moisture meter should be used each day.

RH% & Temperature							
	Day 0	Day 1	Day 2	Day 3	Day 4	Day 5	Day 6
EXTERIOR RH% AND TEMP	99.9% 61.8°						
INTERIOR RH% AND TEMP	61.1% 63.9°						
MOISTURE % & SURFACE TEMPERATURE							
READING # / LOCATION	Day 0	Day 1	Day 2	Day 3	Day 4	Day 5	Day 6
P1	15% 64.8°						
P2	14% 65.1°						
P3	15% 66.7°						

9/23 Thermal imaging





9/24 Equipment

- 1 DHU
- 2 Axial fans



9/24 Equipment layout



9/24 Moisture log

material supply check out. When your job is completed, please return the original to the drying job. Please take a picture of it when you complete it daily in case the original is lost.

MOISTURE READINGS LOG

Job Name: Central Library Date: 7/22/24
 Job Address: _____ City: _____ State: Zip

Contact Information for Site Access:
 Name: 303 Storage Cell: _____

Pictures must be taken of each reading. The same moisture meter should be used each day.

		RH % & Temperature						
		Day 0	Day 1	Day 2	Day 3	Day 4	Day 5	Day 6
EXTERIOR RH% AND TEMP		99.9%	61.8°	/	/	/	/	/
INTERIOR RH% AND TEMP		61.9%	57.7°	57.7°	57.7°	57.7°	57.7°	57.7°
READING # / LOCATION		61.9%	38.4°	41.1°				
		MOISTURE % & SURFACE TEMPERATURE						
		Day 0	Day 1	Day 2	Day 3	Day 4	Day 5	Day 6
P1		15%	14.7°	12.7°				
		64.8%	81°	80.1°				
P2		14%	13.7°					
		65.1%	81.9°					
P3		15%	13.7°					
		66.7%	81.9°					

Equipment Removed



Main Building: 301 Oklahoma

Overview Photos: 301 Oklahoma



Photo 1

Room Notes: 301 Oklahoma

9/22/24 - Thermal Scan



9/22/24 temperature and humidity:



Main Building: 309 Staff

Overview Photos: 309 Staff

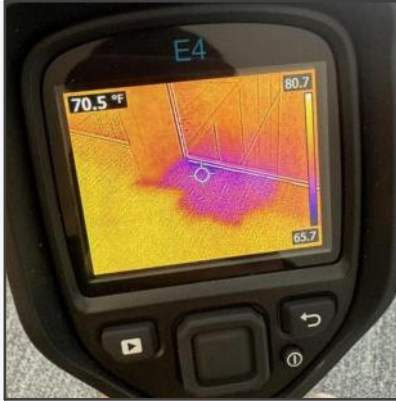
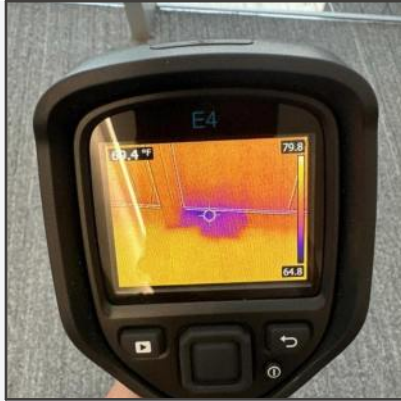


Photo 1

Room Notes: 309 Staff

9/22/24 - Thermal Scan

Carpet tiles show moisture around base of center column. Underlying materials dry, technician removed carpet tiles from area.

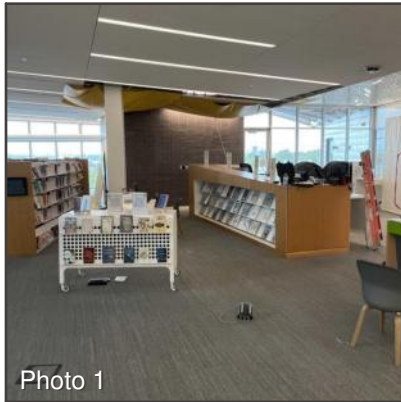


9/22/24 - Temperature and humidity:



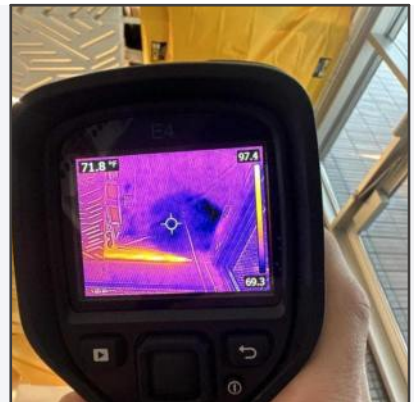
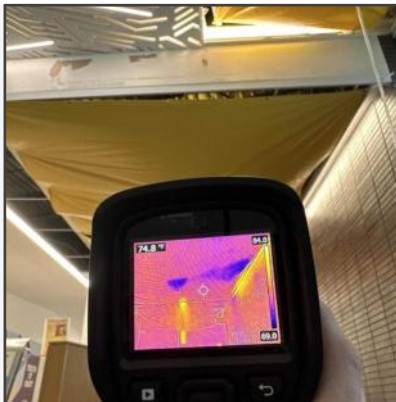
Main Building: 3rd Floor Main area

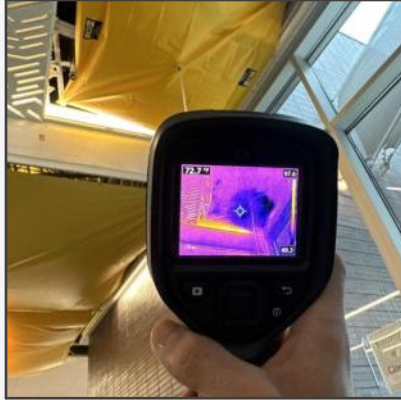
Overview Photos: 3rd Floor Main area



Room Notes: 3rd Floor Main area

9/22/24 - Moisture Diversion Tarps

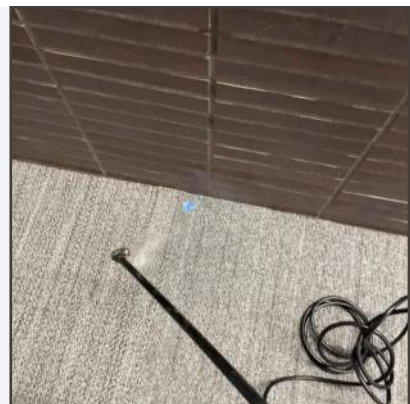




9/22/24 - Thermal scan



9/22/24 - Anti-microbial Treatment

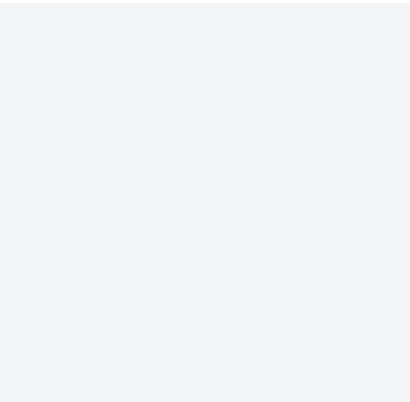


9/22/24 - Equipment

- 1 - Dehumidifier
- 2 - Axial Fans



9/22/24 - Equipment Layout



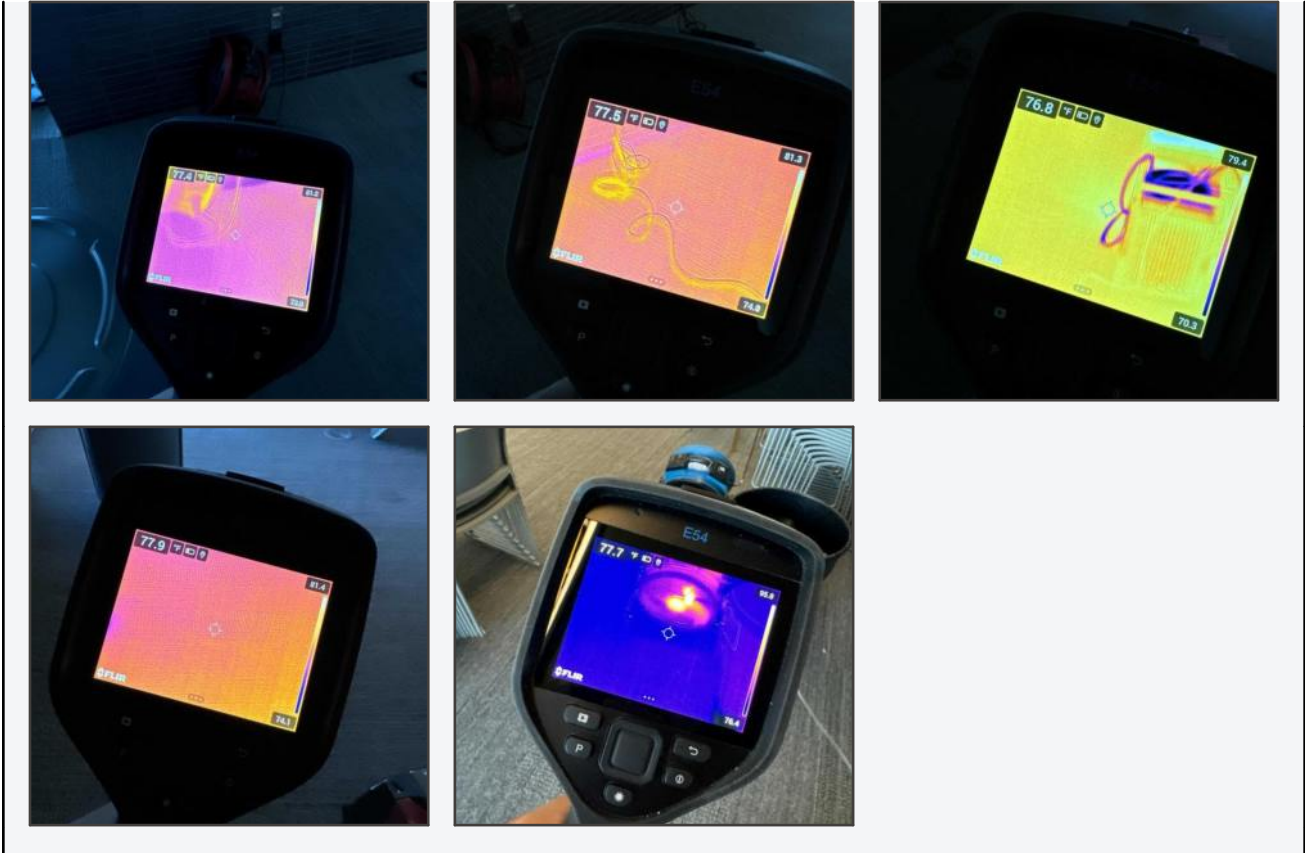
9/22/24 - Moisture Log

Job Name: Central Library Date: 9/22/24
 Job Address: _____ City: _____ State: _____ Zip: _____
 Contact Information for Site Access:
 Name: 3rd Floor Main Area Cell: _____

Pictures must be taken of each reading. The same moisture meter should be used each day.

RH % & Temperature						
	Day 0	Day 1	Day 2	Day 3	Day 4	Day 5
EXTERIOR RH% AND TEMP	44.1% 62.3°					
INTERIOR RH% AND TEMP	47% 75.5°					
WEATHER #						
MOISTURE % & SURFACE TEMPERATURE						
LOCATION	Day 0	Day 1	Day 2	Day 3	Day 4	Day 5
P1	78.1% 71.7°					
P2	75.5% 70.7°					
P3	98.5% 70.2°					

9/23 Thermal imaging

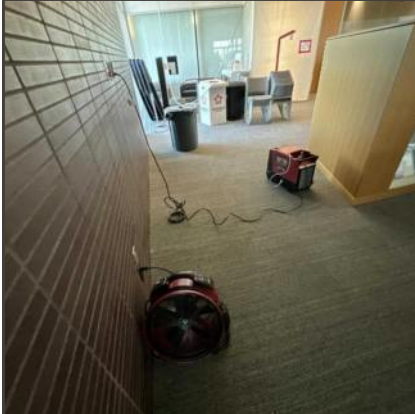


9/23 Equipment

- 2 Axial fans
- 1 DHU



9/23 Equipment layout



9/23 Moisture Log

This form needs to be filled out by the tech responding to a water loss and turned in daily with the materials/supply check-out sheet and a job ticket. It needs to be filled out every day we are on a structural drying job. Please take a picture of it when you complete it daily in case the original is lost.

MOISTURE READINGS LOG

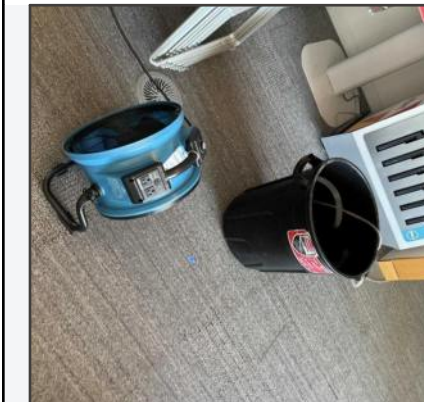
Site Name: Central Lockers Date: 9/22/24
 Site Address: _____ City: _____ State: _____ Zip: _____

Contact Information for Site Access:
 Name: Bro. Steve Minto, Area Cell: _____

Pictures must be taken of each reading. The same moisture meter should be used each day.

		RH % & Temperature						
		Day 0	Day 1	Day 2	Day 3	Day 4	Day 5	Day 6
EXTERIOR RH% AND TEMP		94.1% 64.8°						
INTERIOR RH% AND TEMP		97.5% 75.0°	95.3% 74.1°					
READING #	LOCATION	MOISTURE % & SURFACE TEMPERATURE						
		Day 0	Day 1	Day 2	Day 3	Day 4	Day 5	Day 6
P1		74.1% 71.7°	6.5% 78.8°					
P2		74.1% 70.7°	8.7% 80.1°					
P3		94.3% 70.2°	7.1% 74.8°					

Equipment Removed:



Main Building: 201 A Staff Only

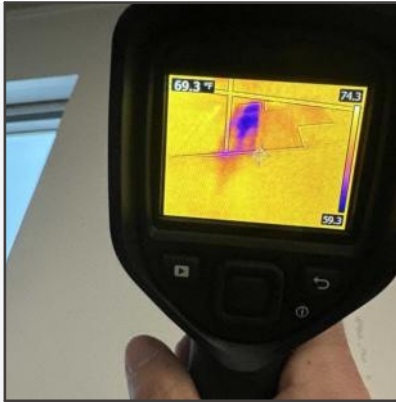
Overview Photos: 201 A Staff Only



Photo 1

Room Notes: 201 A Staff Only

9/22/24 - Thermal Scan



9/22/24 - Humidity and Temperature Readings



9/22/24 - Anti-microbial Treatment

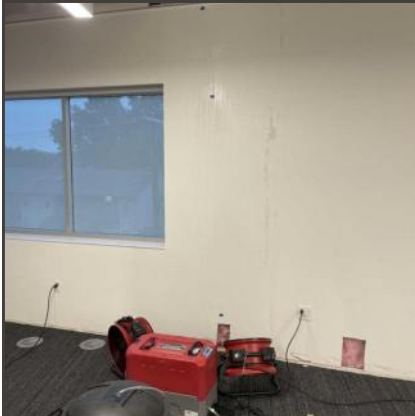


9/22/24 - Equipment

- 1 - Dehumidifier
- 2 - Axial Fans



9/22/24 - Equipment Layout



9/22/24 - Moisture Log

Job Name: Central Library Date: 9/22/24
 Job Address: _____ City: _____ State: FL
 Contact Information for Site Access:
 Name: 201 A Staff only Cell: _____
 Pictures must be taken of each reading. The same moisture meter should be used each day.

READING # / LOCATION	RH% & Temperature						
	Day 0	Day 1	Day 2	Day 3	Day 4	Day 5	Day 6
EXTERIOR RH% AND TEMP	94.9%						
INTERIOR RH% AND TEMP	54.9% 73.5°						
READING # / LOCATION	MOISTURE % & SURFACE TEMPERATURE						
	Day 0	Day 1	Day 2	Day 3	Day 4	Day 5	Day 6
P1	26% 64.7°						
P2	16% 70.5°						
P3	27% 63.8°						

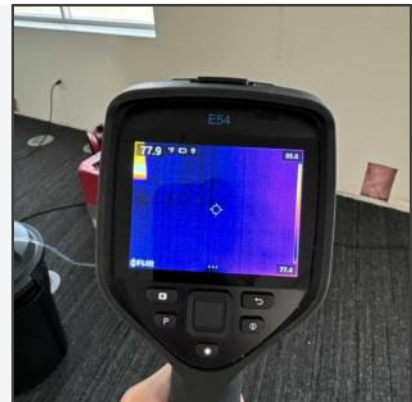
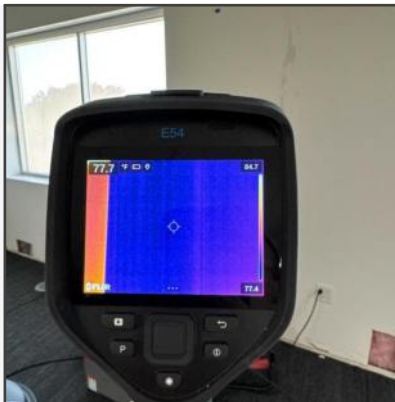
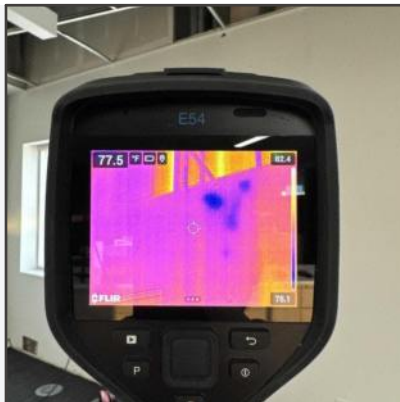
9/23 Moisture Log

CAVINS GROUP
 This form needs to be filled out by the tech responding to a water loss and turned to study with the homeowner/property check-out sheet and a job ticket. It needs to be filled out every day we are on a structural drying job. Please take a picture of it when you complete it daily to save the original to text.

MOISTURE READINGS LOG
 Job Name: Central Library Date: 9/22/24
 Job Address: _____ City: _____ State: FL
 Contact Information for Site Access:
 Name: 201 A Staff only Cell: _____
 Pictures must be taken of each reading. The same moisture meter should be used each day.

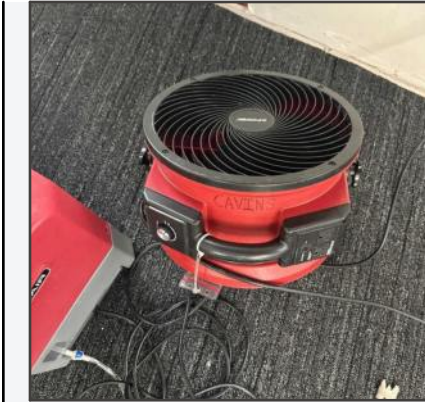
READING # / LOCATION	RH% & Temperature						
	Day 0	Day 1	Day 2	Day 3	Day 4	Day 5	Day 6
EXTERIOR RH% AND TEMP	94.9%						
INTERIOR RH% AND TEMP	54.9% 73.5°						
READING # / LOCATION	MOISTURE % & SURFACE TEMPERATURE						
	Day 0	Day 1	Day 2	Day 3	Day 4	Day 5	Day 6
P1	26% 64.7°	18% 78.7°					
P2	16% 70.5°	17% 71.1°					
P3	27% 63.8°	17% 77.0°					

9/23 Thermal imaging



9/23 Equipment

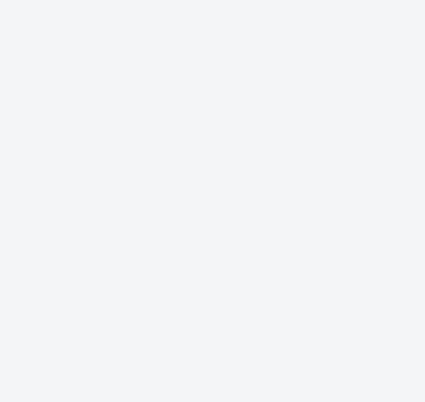
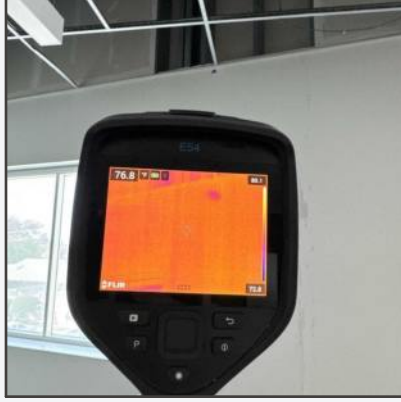
- 1 DHU
- 2 Axial fans



9/23 Equipment layout



9/24 Thermal imaging



9/24 Equipment

- 1 DHU
- 2 Axial fans



9/24 Equipment layout



9/24 Moisture log

This form needs to be filled out by the tech responding to a water loss and turned in daily with the material log, check the above and you're good. It needs to be filled out every day for you as a requirement during job. Please take a picture of it a time you complete it daily to cover the original in case.

MOISTURE READINGS (PH) Date: 9/24/24

Job Number: Job: Job #:

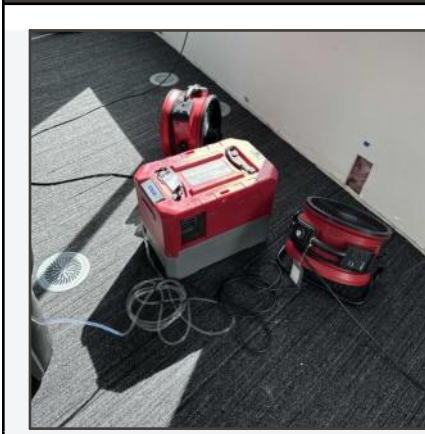
Contact Information for this Account: Job #:

Del A Date only: Job #:

Please check for signs of mold daily. The same moisture meter should be used each day.

	INDICATOR					
	Day 1	Day 2	Day 3	Day 4	Day 5	Day 6
EXTERIOR RH% AND TEMP	41.9%					
INTERIOR RH% AND TEMP	65.8%					
READING #	132	133	134	135	136	137
LOCATION						
	MOISTURE & SURFACE TEMPERATURE					
	Day 1	Day 2	Day 3	Day 4	Day 5	Day 6
P1	26.7%	18.1%	11.2%			
	64.7%	18.1%	32.8%			
P2	16.2%	18.1%	18.5%			
	27.5%	22.3%	22%			
P3	27.5%	18.1%	17%			
	63.8%	17.8%	18.1%			

Equipment Removed:



Main Building: 2nd floor Common Areas

Room Notes: 2nd floor Common Areas

9/22/24 - Humidity and Temperature Readings

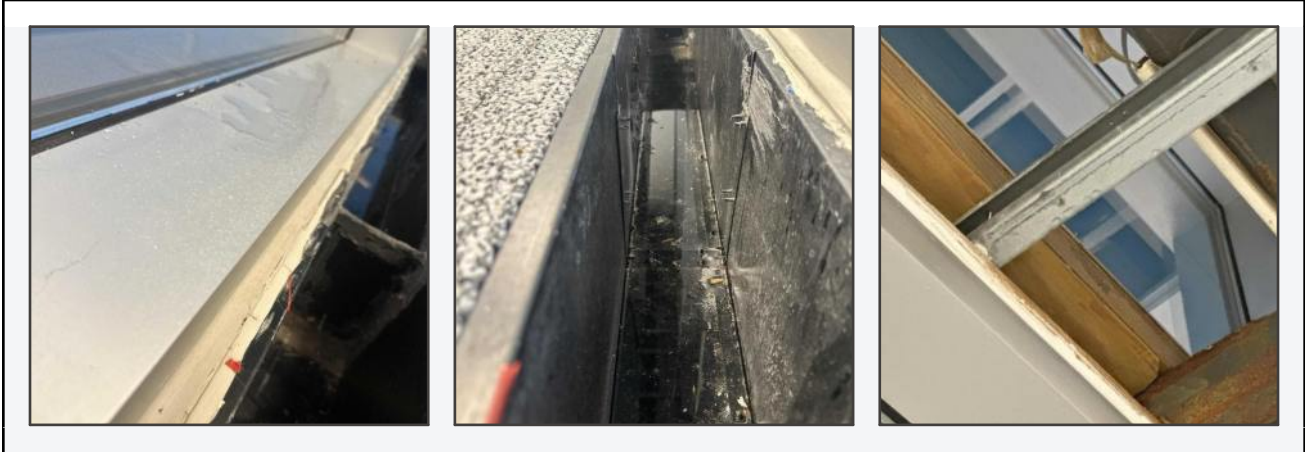


9/22/24 - SE corner Thermal Scan

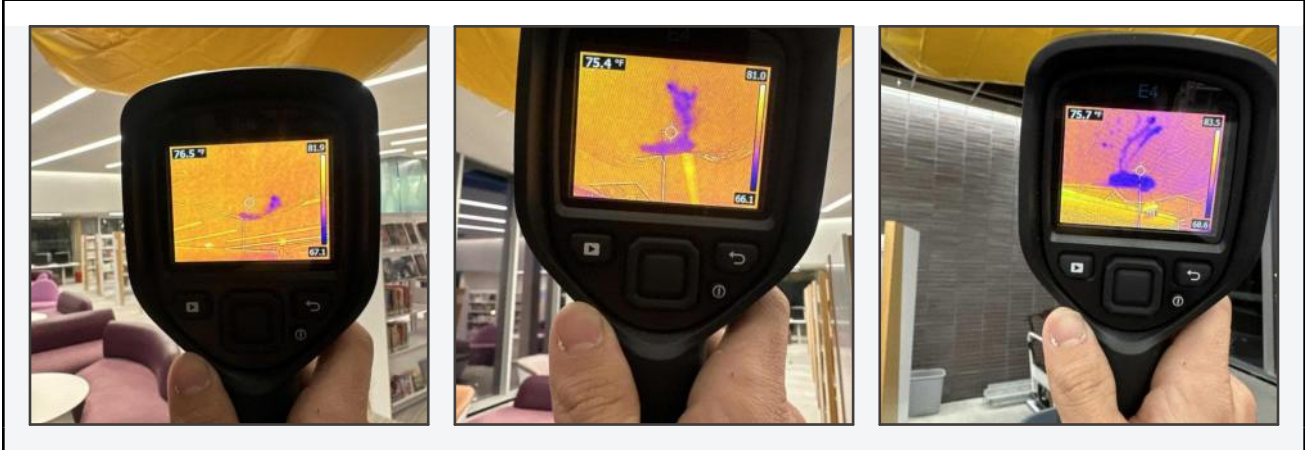




9/22/24 - SE Corner Visible Water Droplets



9/22/24 - Moisture Diversion Tarps



9/22/24 - Equipment Layout

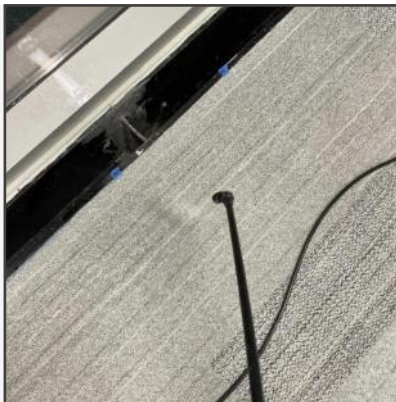


9/22/24 - Equipment

- 1 - Dehumidifier
- 2 - Axial Fans



9/22/24 - Anti-microbial Treatment



9/22/24 - Moisture Log

Job Name: Central Library Date: 9/22/24
 Job Address: _____ City: _____ State: _____ Zip: _____
 Contact Information for Site Access:
 Name: 2nd Floor SE Corner Cell: _____
 Pictures must be taken of each reading. The same moisture meter should be used each day.

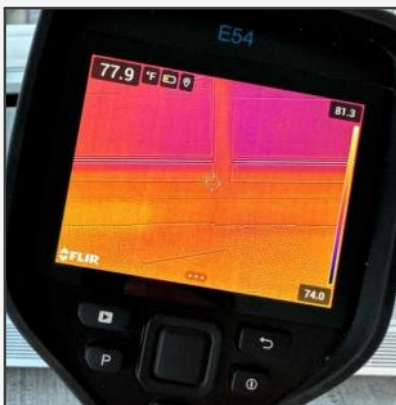
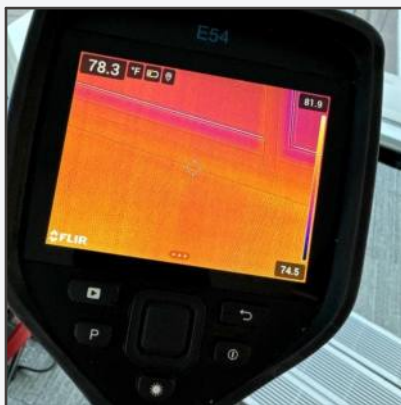
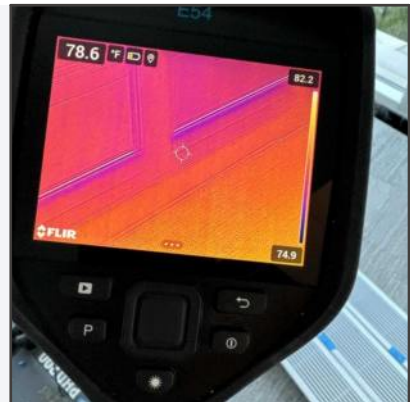
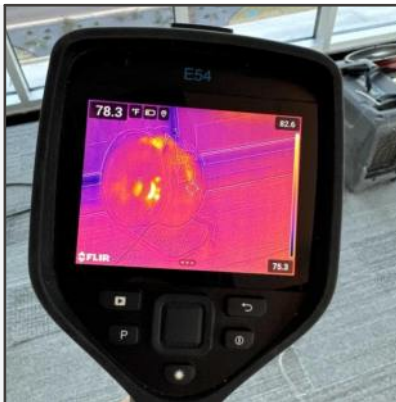
		RH % & Temperature						
		Day 0	Day 1	Day 2	Day 3	Day 4	Day 5	Day 6
EXTERIOR RIPS AND TEMP		71.1%						
		61.8°						
INTERIOR RIPS AND TEMP		49.1%						
		74.3°						
READING # / LOCATION		MOISTURE % & SURFACE TEMPERATURE						
		Day 0	Day 1	Day 2	Day 3	Day 4	Day 5	Day 6
P1	21%							
	68°							
P2	17%							
	67.1°							
P3	11.1%							
P4	11.1%							

9/23 Moisture Log

Job Name: _____ Date: _____
 Job Address: _____ City: _____ State: _____ Zip: _____
 Contact Information for Site Access:
 Name: 2nd Floor SE Corner Cell: _____
 Pictures must be taken of each reading. The same moisture meter should be used each day.

		RH % & Temperature						
		Day 0	Day 1	Day 2	Day 3	Day 4	Day 5	Day 6
EXTERIOR RIPS AND TEMP								
INTERIOR RIPS AND TEMP								
READING # / LOCATION		MOISTURE % & SURFACE TEMPERATURE						
		Day 0	Day 1	Day 2	Day 3	Day 4	Day 5	Day 6
P1								
P2								
P3								
P4								

9/23 Thermal imaging



9/23 Equipment

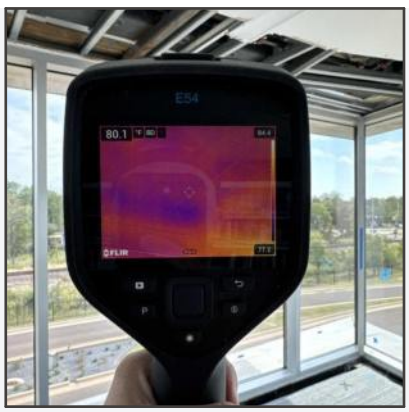
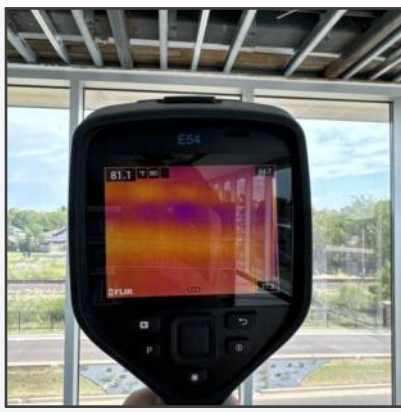
- 1 DHU
- 2 Axial fans

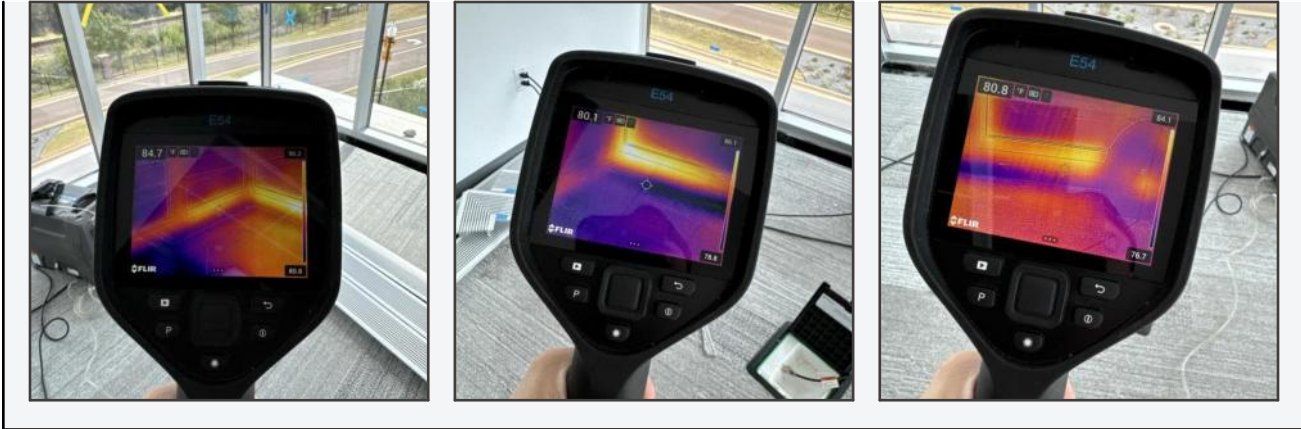


9/23 Equipment layout



9/24 Thermal imaging





9/24 Equipment

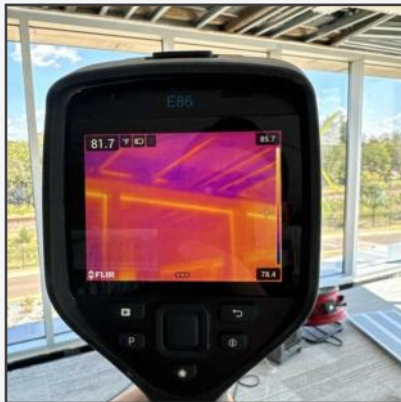
- 1 DHU
- 2 Axial fans



9/24 Equipment layout



9/25 Thermal imaging



9/25 Equipment

- 1 DHU
- 2 Axial fans



9/25 Equipment layout



9/25 Moisture log

This form needs to be filled out by the tech responding to a water leak and turned in daily with the material/supply check-out sheet and a job ticket. It needs to be filled out every day we are on a structural drying job. Please take a picture of it when you complete it daily to use the original to boot.

MOISTURE READINGS LOG

SA Name: Candice Liberman Date: 9/20/21
SA Address: _____ City: _____ State: _____

Contact Information for Site Address:
Name: 2nd Floor SE Corner City: _____

Pictures must be taken of each reading. The same moisture reader should be used each day.

		RH % & Temperature					
		Day 1	Day 2	Day 3	Day 4	Day 5	Day 6
EXTERIOR RH% AND TEMP		91.5% 63.8°	51.5% 75.8°	57.5% 78°	51% 71°	48° 71°	48° 72°
INTERIOR RH% AND TEMP		48.5% 64.5°	41.5% 71.9°	41.5% 71.9°	48.4% 71.9°	48.4% 71.9°	48.4% 71.9°
READING # & LOCATION		MOISTURE % & SURFACE TEMPERATURE					
		Day 1	Day 2	Day 3	Day 4	Day 5	Day 6
P1		81% 64°	72% 68.8°	62.5% 71.9°	49% 72°	48° 71°	48° 72°
P2		77% 67.1°	61.5% 73.5°	57.5% 74.5°	48% 74°	48% 74°	48% 74°
P3		51.5% 61.5°	41.5% 71.9°	41.5% 71.9°	48.4% 71.9°	48.4% 71.9°	48.4% 71.9°
P4		51.5% 61.5°	41.5% 71.9°	41.5% 71.9°	48.4% 71.9°	48.4% 71.9°	48.4% 71.9°

Equipment Removed



Main Building: Staff Only 212

Overview Photos: Staff Only 212

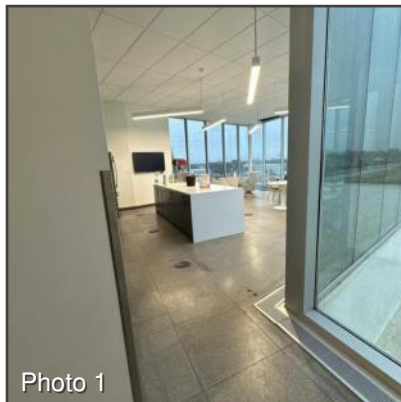
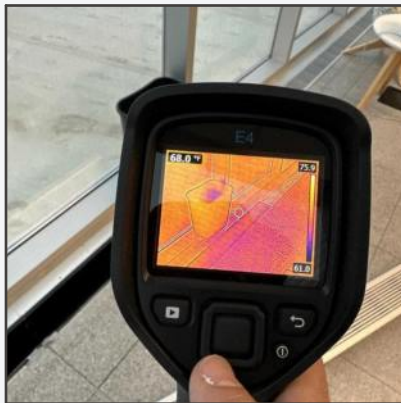
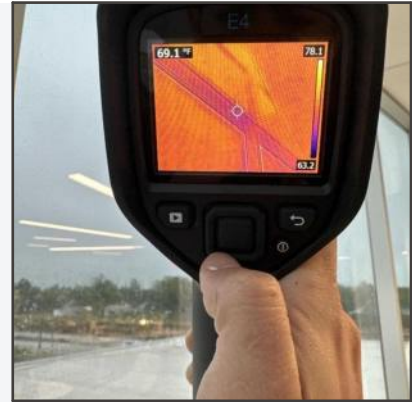


Photo 1

Room Notes: Staff Only 212

9/22/24 - Thermal Scan



9/22/24 - Water Intrusion

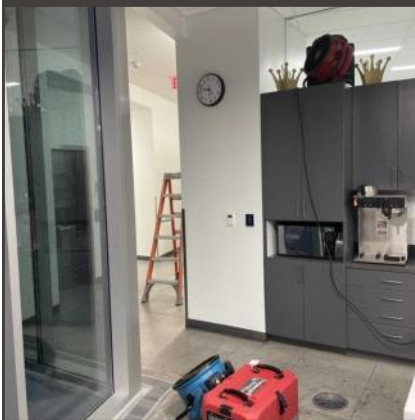


9/22/24 - Equipment

- 1 - Dehumidifier
- 2 - Axial Fans



9/22/24 - Equipment Layout



9/22/24 - Anti-microbial Treatment



9/22/24 - Moisture Log

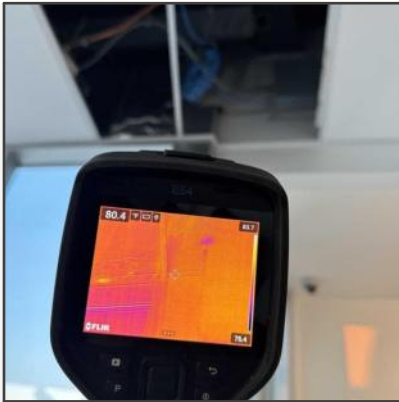
Job Name: Central Library Date: 9/22/24
 Job Address: _____ City: _____ State: _____ Zip: _____

Contact Information for Site Access:
 Name: Staff Only 212 Cell: _____

Pictures must be taken of each reading. The same moisture meter should be used each day.

		RH % & Temperature						
		Day 0	Day 1	Day 2	Day 3	Day 4	Day 5	Day 6
EXTERIOR RH% AND TEMP		99.1%						
INTERIOR RH% AND TEMP		51.7%						
READING # / LOCATION		73°						
		MOISTURE % & SURFACE TEMPERATURE						
		Day 0	Day 1	Day 2	Day 3	Day 4	Day 5	Day 6
P1		92%						
P2		96%						

9/23 Thermal imaging



9/23 Equipment



- 1 DHU
- 2 Axial fan

9/23 Equipment layout



9/23 Moisture log

This form needs to be filled out by the tech responsible for a water leak and turned in daily with the correct receipts, check out sheet and a job ticket. It needs to be filled out every day you are on a structural site job. Please take a picture of it when you complete it daily to use the program in the future.

MOISTURE READINGS LOG

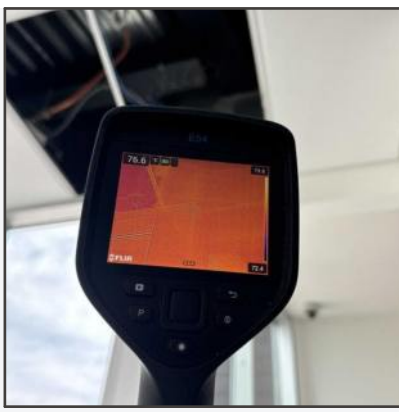
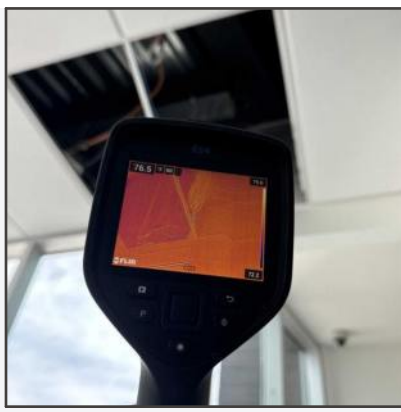
Location: Central Library Date: 9/23/24

Project Information for this project:
 Name: Steele Only 21D Job #:

Please mark the values of each reading. The same moisture reader should be used each day.

		RH % Readings					
		Day 0	Day 1	Day 2	Day 3	Day 4	Day 5
EXTERIOR RH%	66.5%						
AND TEMP	65.8°						
INTERIOR RH%	73.7%						
AND TEMP	71°						
MOISTURE LOCATION		MOISTURE % & SURFACE TEMPERATURE					
		Day 0	Day 1	Day 2	Day 3	Day 4	Day 5
P1	66.5% / 71°						
P2	66.5% / 71°						

9/24 Thermal imaging



9/24 Equipment

- 1 DHU
- 2 Axial fans



9/24 Equipment layout



9/24 Moisture log

This form needs to be filled out by the technician(s) for each rooming in a room that is being set up and turned on. Each rooming requires a date and a set of initials. A rooming is not complete until the technician(s) has signed the log. The technician(s) must also sign the log when the rooming is completed. The technician(s) must also sign the log when the rooming is completed. The technician(s) must also sign the log when the rooming is completed.

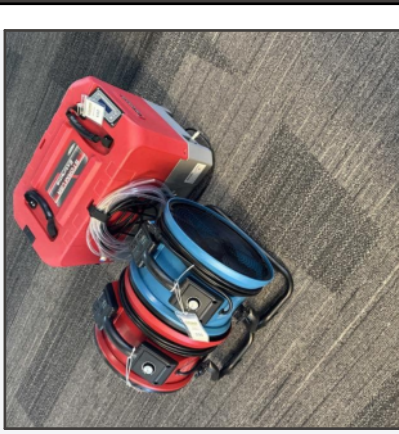
Client: Central University Date: 9/24/24

Rooming: 3rd Floor, 319 Rooming: 319/24

Moisture Meter: MOISTURE METER

Rooming	Day 1	Day 2	Day 3	Day 4	Day 5	Day 6	Day 7
EXTERIOR HUMIDITY	46.5%	45.5%	45.5%	45.5%	45.5%	45.5%	45.5%
INDOOR HUMIDITY	57.5%	51.5%	48.5%	48.5%	48.5%	48.5%	48.5%
MOISTURE METER	1.5	1.5	1.5	1.5	1.5	1.5	1.5
ROOMING	P1	P1	P1	P1	P1	P1	P1
LOCATION	P2	P2	P2	P2	P2	P2	P2

Equipment Removed



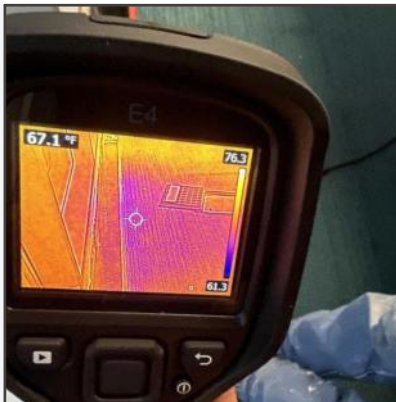
Main Building: 233 Study Room

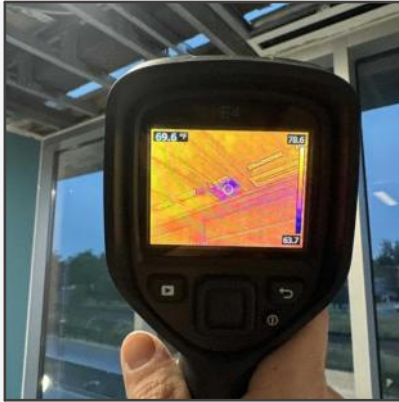
Overview Photos: 233 Study Room



Room Notes: 233 Study Room

9/22/24 - Thermal Scan





9/22/24 - Humidity and Temperature Readings



9/22/24 - Visible Water Droplets



9/22/24 - Equipment Layout



9/22/24 - Equipment

- 1 - Dehumidifier
- 2 - Axial Fans



9/22/24 - Anti-microbial Treatment



9/23 Moisture Log

GROUP

This form needs to be filled out for each measurement to ensure best and fastest results with the non-destructive check and avoid a full test. It needs to be filled out every day we are on a structural drying job. Please take a picture of it when you complete it daily to save the original form.

MOISTURE READINGS LOG

Job Name: Central Library Date: 9/23/24

Contact Information for Site Access: 222 Stuyvesant Ave

Picture must be taken of each reading. The same locations must be used each day.

	RELATIVE HUMIDITY					
	Day 1	Day 2	Day 3	Day 4	Day 5	Day 6
EXTERIOR RH% AND TEMP	45.5%	45.5%				
INTERIOR RH% AND TEMP	45.5%	45.5%				
MOISTURE %	7.4%	7.3%				
LOCATION	MOISTURE % & REFERENCE TEMPERATURE					
	Day 1	Day 2	Day 3	Day 4	Day 5	Day 6
P-1	9.5%	12.3%				
P-2	11.5%	8.2%				

9/23 Equipment

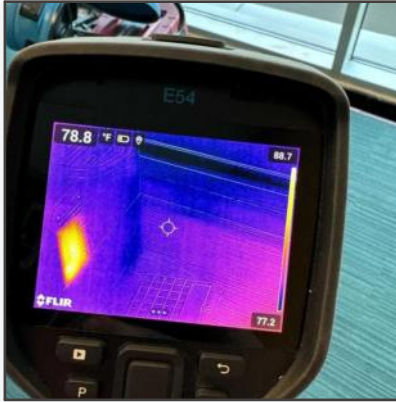
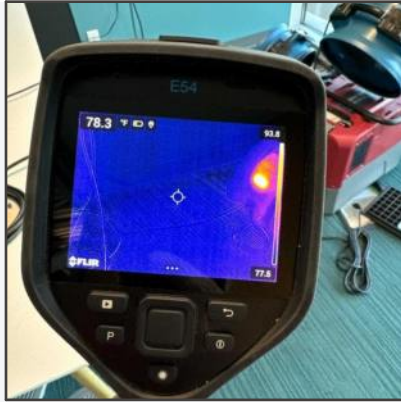
- 1 DHU
- 2 Axial Fans



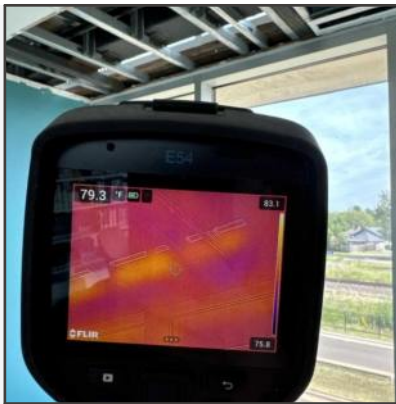
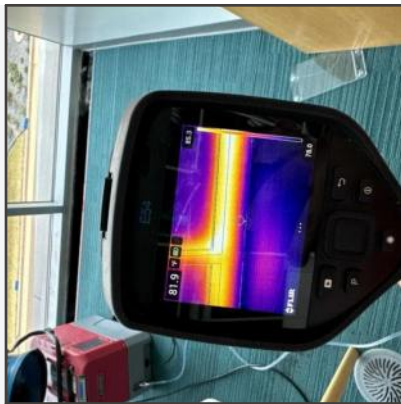
9/23 Equipment Layout



9/23 Thermal imaging



9/24 Thermal imaging



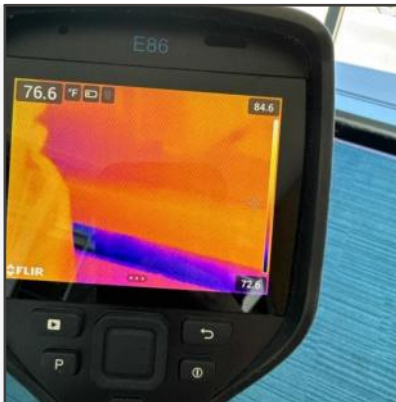
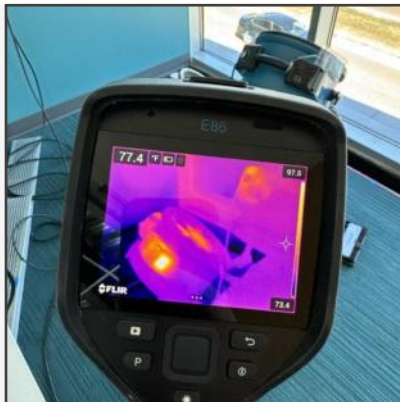
9/24 Equipment

- 1 DHU
- 2 Axial fans

9/25 Equipment layout



9/25 Thermal imaging



9/25 Moisture log

CAVINS GROUP

This document is to be filled out by the field technician for each day of the investigation. It is to be filled out daily and submitted to the project manager at the end of each day. It is to be filled out for each day of the investigation.

MOISTURE RELEASE LOG

Location: Central Library Date: 9/29/20

Project Information for this session

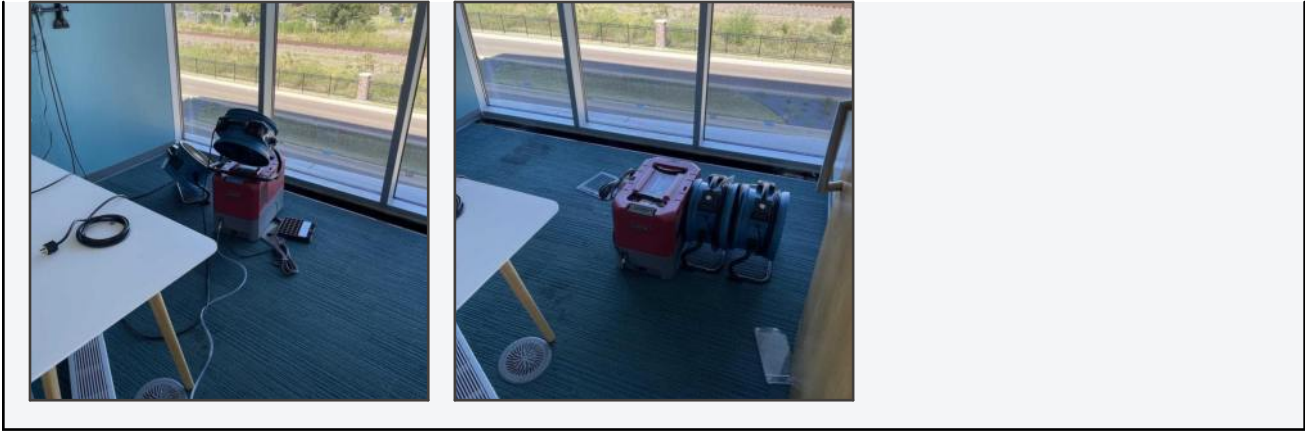
Project: 223 Study Room

Project name for use on all reports: The above location should be used on all reports.

Location	Relative Humidity				
	Day 1	Day 2	Day 3	Day 4	Day 5
OUTSIDE AIR AND TEMP	74.0	73.0	72.0	71.0	70.0
INTERIOR AIR AND TEMP	75.0	74.0	73.0	72.0	71.0

Location	MOISTURE RELEASE TEMPERATURE				
	Day 1	Day 2	Day 3	Day 4	Day 5
P1	18.0	17.0	16.0	15.0	14.0
P2	18.0	17.0	16.0	15.0	14.0

Equipment Removed



Main Building: Stairwell 1

Overview Photos: Stairwell 1



Photo 1

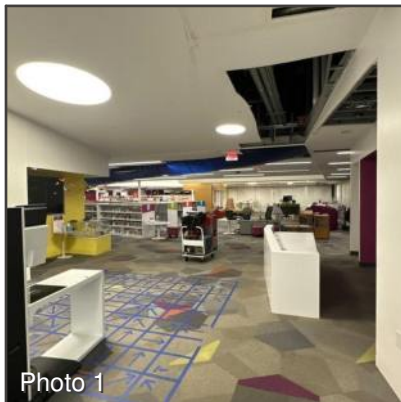
Room Notes: Stairwell 1

9/22/24 - Thermal Scan



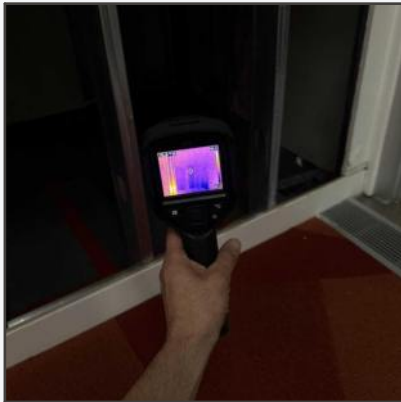
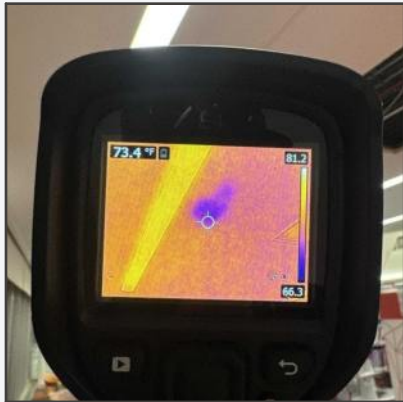
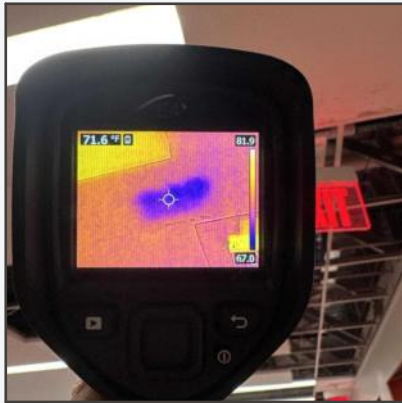
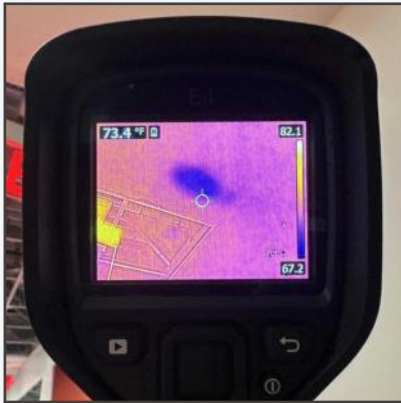
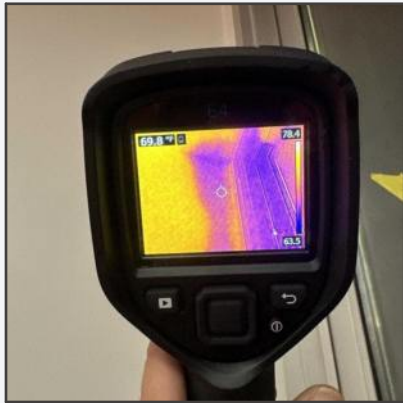
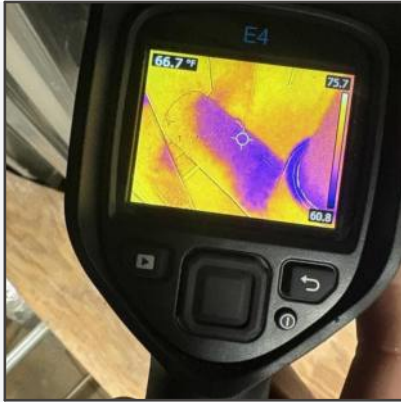
Main Building: Childrens Area SE Corner

Overview Photos: Childrens Area SE Corner



Room Notes: Childrens Area SE Corner

9/22/24 - Thermal Scan

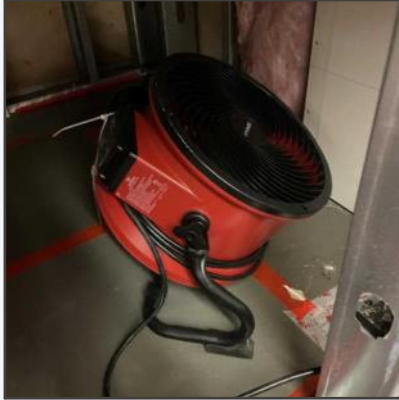




9/22/24 - Equipment

- 2 - Dehumidifiers
- 5 - Axial Fans



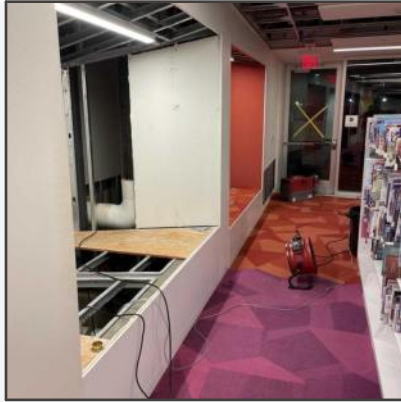


9/22/24 - Visible Water Droplets





9/22/24 - Equipment Layout



9/22/24 - Anti-microbial Treatment



9/22/24 - Moisture Log

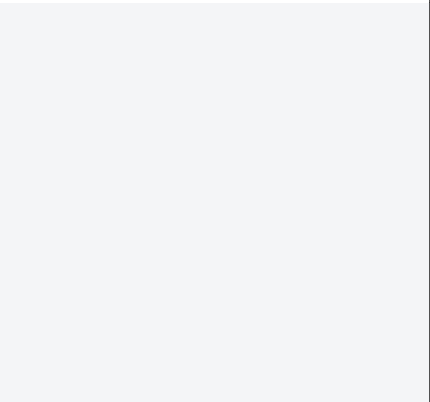
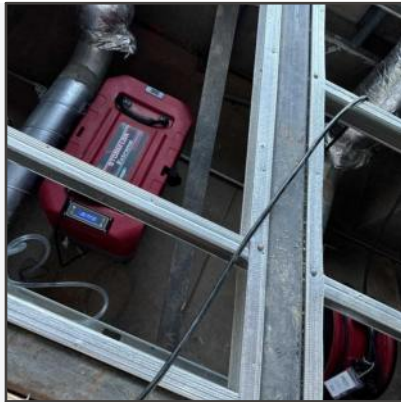
Job Name: Central Library Date: 9/22/24
 Job Address: _____ City: _____ State: _____ Zip: _____

Contact Information for Site Access:
 Name: Children's Area SE Corner Cell: _____

Pictures must be taken of each reading. The same moisture meter should be used each day.

	RH % & Temperature						
	Day 0	Day 1	Day 2	Day 3	Day 4	Day 5	Day 6
EXTERIOR RH% AND TEMP	88.9% 63.8°						
INTERIOR RH% AND TEMP	52.8% 74.4°						
READING # / LOCATION	MOISTURE % & SURFACE TEMPERATURE						
	Day 0	Day 1	Day 2	Day 3	Day 4	Day 5	Day 6
P1	82% 62°						
P2	12% 78.6°						
P3	95.9% 71.1°						
P4	66% 63.4°						
P5	96% 73.9°						
P6	90% 71°						

9/23 Equipment Layout



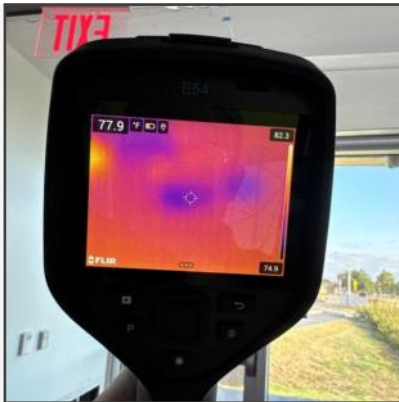
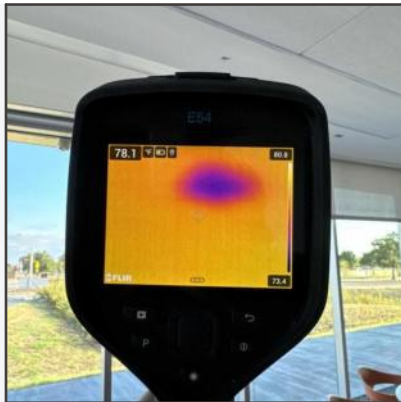
9/23 Equipment

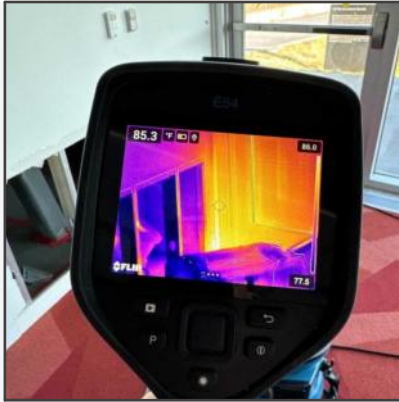
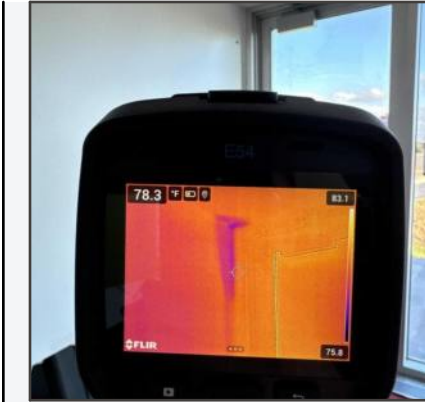
2 DHU
 5 Axial fans





9/23 Thermal imaging





9/23 Moisture Log

CAVINS GROUP

This form needs to be filled out by the tech responsible for each area and turned in daily with the completed readings. Readings should not show and a technician is unable to fill out the form until the readings are completed. Please take a moment to check your equipment is fully to meet the required in use.

MOISTURE READING LOG

Location: Central Library Date: 9/20/24

Contact Information for the Area: Childrens Div SE Corridor

Please mark the date of each reading. The same location must be read on each day.

MOISTURE LOCATION	MOISTURE % SURFACE TEMPERATURE					
	Day 1	Day 2	Day 3	Day 4	Day 5	Day 6
P1	82.5°	75.5°				
P2	78.6°	84.5°				
P3	85.5°	77.5°				
P4	85.5°	77.5°				
P5	85.5°	77.5°				
P6	85.5°	77.5°				

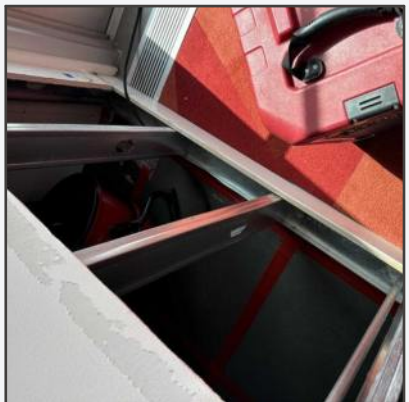
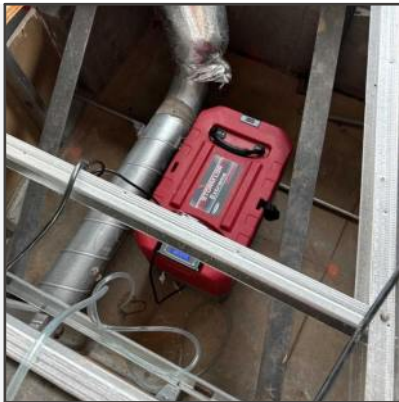
9/24 Thermal imaging





9/24 Equipment

2 DHUs
5 Axial fans





9/24 Equipment layout



9/24 Moisture log

ENCIRCLE GROUP

This form needs to be filled out for the each responding to a water loss and stored in daily with the original copy along with claim and a picture. It needs to be filled out every day for as long as a structural drying job. Please take a picture of a where you complete a daily to use the original in lieu.

LOCATION: Central Library Date: 9/22/24

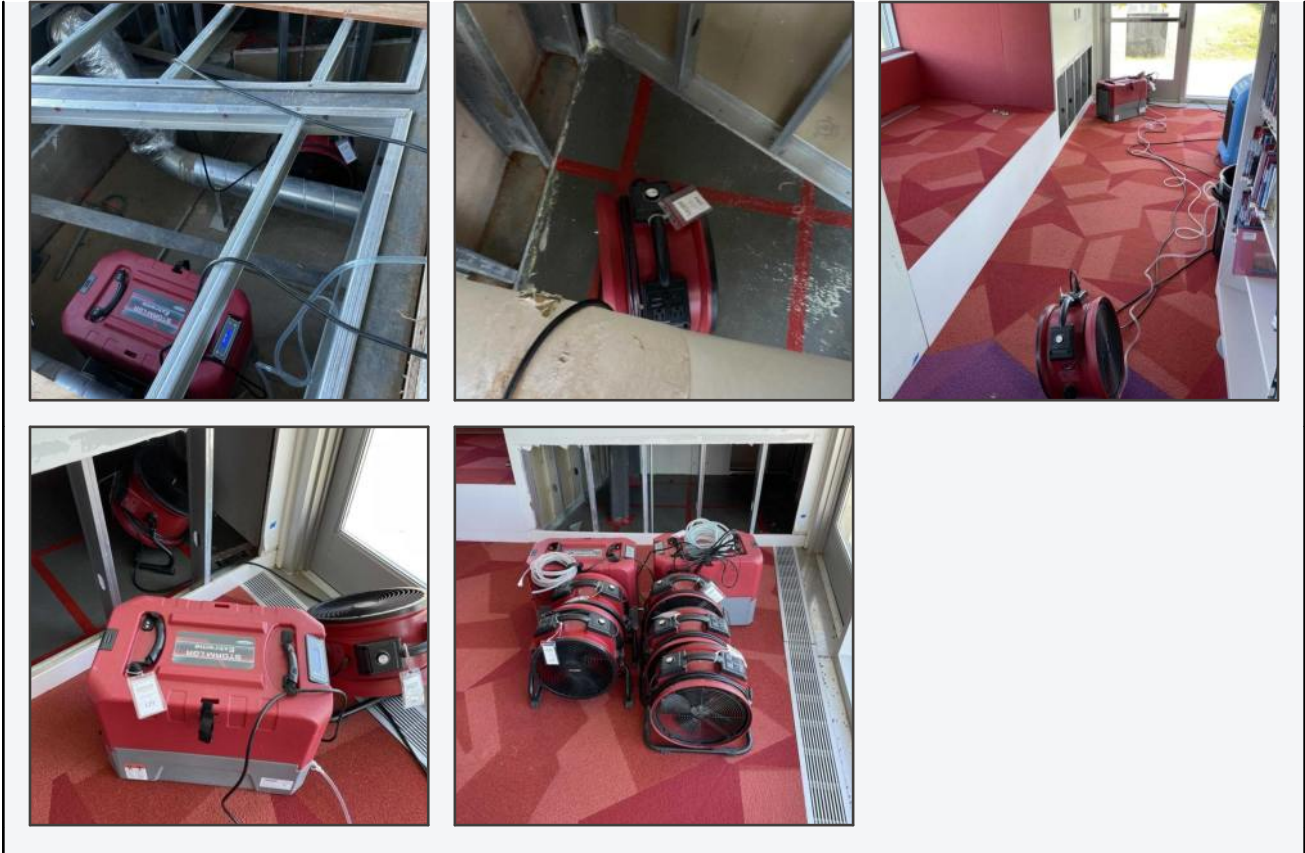
MOISTURE READINGS LOG

Contact Information for Site Access
 Name: Ed Wilson, Sr., SE Center Cell: _____

Person name for each reading. The same moisture reader should be used each day.

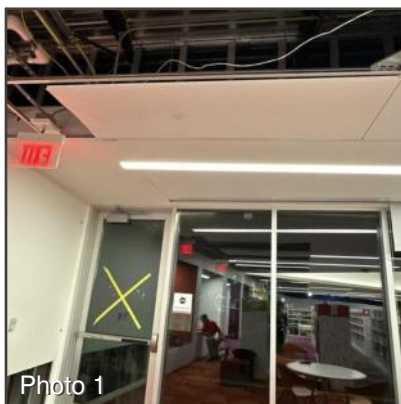
MOISTURE N/A SURFACE TEMPERATURE	RH % & Temperature						
	Day 0	Day 1	Day 2	Day 3	Day 4	Day 5	Day 6
EXTERIOR RH% AND TEMP	65% 75°	65% 75°	65% 75°	65% 75°	65% 75°	65% 75°	65% 75°
INTERIOR RH% AND TEMP	75% 80°	75% 80°	75% 80°	75% 80°	75% 80°	75% 80°	75% 80°
MOISTURE N/A SURFACE TEMPERATURE	MOISTURE N/A SURFACE TEMPERATURE						
	Day 0	Day 1	Day 2	Day 3	Day 4	Day 5	Day 6
P1	82% 68°	82% 68°	82% 68°	82% 68°	82% 68°	82% 68°	82% 68°
P2	82% 68°	82% 68°	82% 68°	82% 68°	82% 68°	82% 68°	82% 68°
P3	82% 68°	82% 68°	82% 68°	82% 68°	82% 68°	82% 68°	82% 68°
P4	82% 68°	82% 68°	82% 68°	82% 68°	82% 68°	82% 68°	82% 68°
P5	82% 68°	82% 68°	82% 68°	82% 68°	82% 68°	82% 68°	82% 68°
P6	82% 68°	82% 68°	82% 68°	82% 68°	82% 68°	82% 68°	82% 68°

Equipment Removed



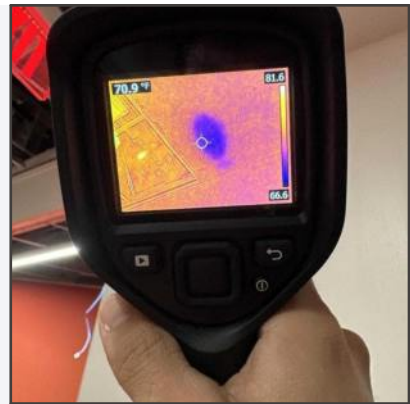
Main Building: Childrens Area South Windows

Overview Photos: Childrens Area South Windows



Room Notes: Childrens Area South Windows

9/22/24 - Thermal Scan



9/22/24 - Equipment

- 1 - Dehumidifier
- 2 - Axial Fans



9/22/24 - Equipment Layout



9/22/24 - Anti-microbial Treatment



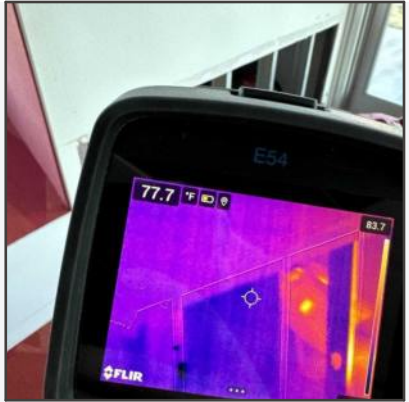
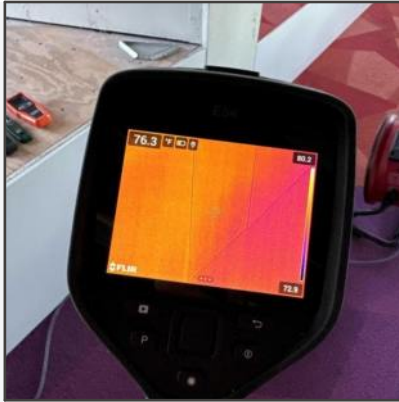
9/22/24 - Moisture Log

Job Name: Central Library Date: 9/22/24
 Job Address: _____ City: _____ State: _____ Zip: _____
 Contact Information for Site Access:
 Name: Children's Area South windows Call

Pictures must be taken of each reading. The same moisture meter should be used each day.

		RH % & Temperature						
		Day 0	Day 1	Day 2	Day 3	Day 4	Day 5	Day 6
EXTERIOR RH% AND TEMP		91%						
INTERIOR RH% AND TEMP		61%						
READING # / LOCATION		58%						
		74.8°						
		MOISTURE % & SURFACE TEMPERATURE						
		Day 0	Day 1	Day 2	Day 3	Day 4	Day 5	Day 6
P1		28%						
P2		36%						
		70.7°						
		71.4°						

9/23 Thermal imaging



9/23 Equipment layout

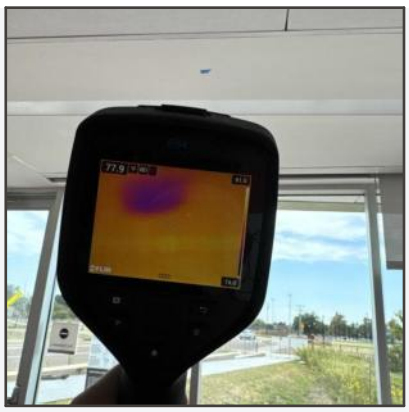
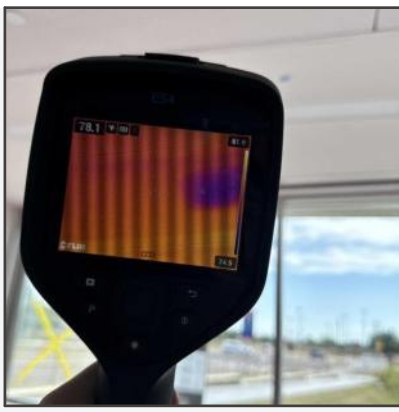


9/23 Equipment

- 1 DHU
- 2 Axial fans



9/24 Thermal imaging

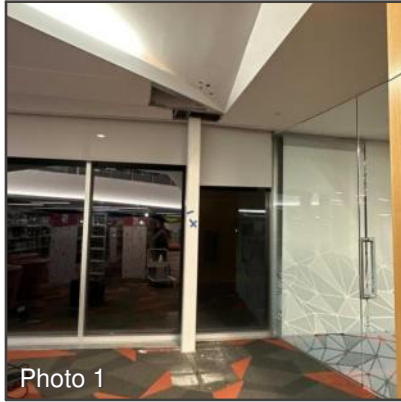


Equipment Removed



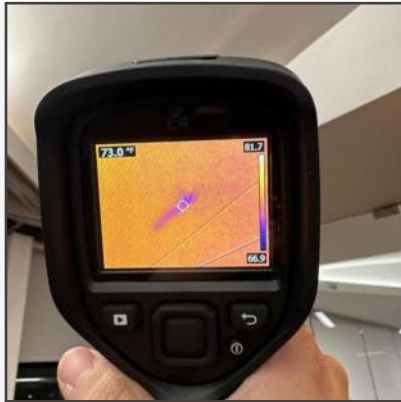
Main Building: Childrens Area Middle Column

Overview Photos: Childrens Area Middle Column



Room Notes: Childrens Area Middle Column

9/22/24 - Thermal Scan





9/22/24 - Humidity and Temperature Readings



9/22/24 - Equipment

- 1 - Dehumidifier
- 2 - Axial Fans



9/22/24 - Equipment layout



9/22/24 - Anti-microbial Treatment



9/22/24 - Moisture Log

Job Name: Central Library Date: _____
 Job Address: _____ City: _____ State: _____ Zip: _____
 Contact Information for Site Access:
 Name: Children's Area Middle Column Cell: _____
 Pictures must be taken of each reading. The same moisture meter should be used each day.

		RH% & Temperature						
		Day 0	Day 1	Day 2	Day 3	Day 4	Day 5	Day 6
EXTERIOR RH% AND TEMP		71.5% 61.9°						
INTERIOR RH% AND TEMP		52.2% 64.1°						
READING # / LOCATION		MOISTURE % & SURFACE TEMPERATURE						
		Day 0	Day 1	Day 2	Day 3	Day 4	Day 5	Day 6
P1		16% 75°						
P2		14% 75.4°						
P3		70% 74.1°						

9/23 Thermal imaging



9/23 Equipment Layout



9/23 Equipment

- 1 DHU
- 2 Axial fans



9/23 Moisture Log

CAVINS GROUP

This form needs to be filled out by the tech responding to a water leak and handed in daily with the material supply check-out sheet and a job ticket. It needs to be filled out every day we are on a structural drying job. Please take a picture of it when you complete it daily to cover the original in lost.

MOISTURE READING LOG

MO/NO: Central Library CO: 9/23/24

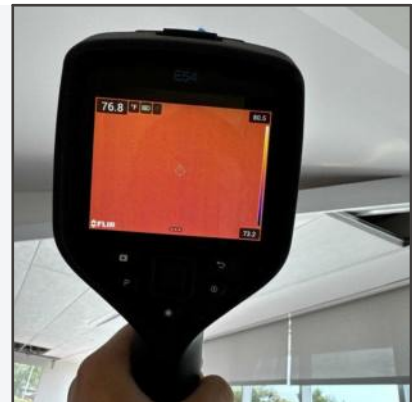
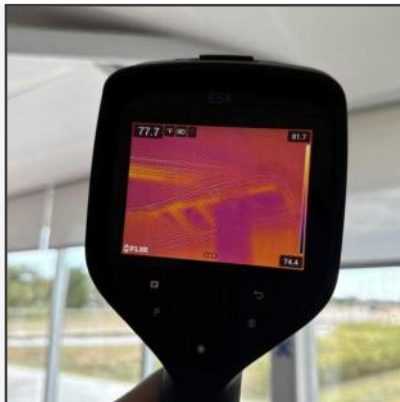
MO/NO: Central Library CO: 9/23/24

Contact Information for Site Access:
 MO/NO: Children's Don Middle School CO: 9/23/24

Please mark the value of each reading. The same moisture meter should be used each day.

		RH % & Temperature						
		Day 0	Day 1	Day 2	Day 3	Day 4	Day 5	Day 6
EXTERIOR RH% AND TEMP		95.5% 53.8°						
INTERIOR RH% AND TEMP		85.5% 70.4°						
MOISTURE %		18.4%						
		MOISTURE & SURFACE TEMPERATURE						
		Day 0	Day 1	Day 2	Day 3	Day 4	Day 5	Day 6
P1		16.0% 78.0°	15.5% 81.1°					
P2		14.0% 78.0°	14.0% 81.5°					
P3		10.0% 78.0°	11.0% 79.0°					

9/24 Thermal imaging



9/24 Moisture log

CAVINS GROUP

This form needs to be filled out by the tech responding to a water leak and handed in daily with the material supply check-out sheet and a job ticket. It needs to be filled out every day we are on a structural drying job. Please take a picture of it when you complete it daily to cover the original in lost.

MOISTURE READING LOG

MO/NO: Central Library CO: 9/23/24

MO/NO: Central Library CO: 9/23/24

Contact Information for Site Access:
 MO/NO: Children's Don Middle School CO: 9/23/24

Please mark the value of each reading. The same moisture meter should be used each day.

		RH % & Temperature						
		Day 0	Day 1	Day 2	Day 3	Day 4	Day 5	Day 6
EXTERIOR RH% AND TEMP		95.5% 53.8°						
INTERIOR RH% AND TEMP		85.5% 70.4°						
MOISTURE %		18.4%						
		MOISTURE & SURFACE TEMPERATURE						
		Day 0	Day 1	Day 2	Day 3	Day 4	Day 5	Day 6
P1		16.0% 78.0°	15.5% 81.1°					
P2		14.0% 78.0°	14.0% 81.5°					
P3		10.0% 78.0°	11.0% 79.0°					

9/24 Equipment

- 1 DHU
- 2 Axial fans

Powered by Encircle



9/24 Equipment layout

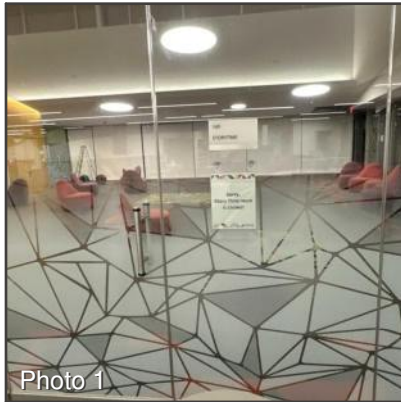


Equipment Removed:



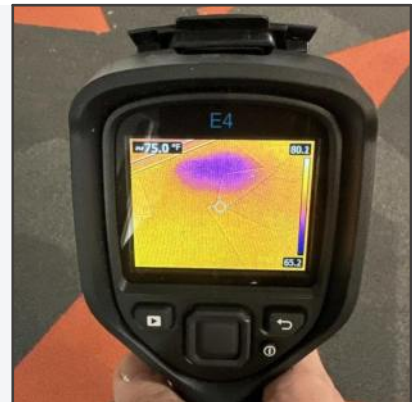
Main Building: 149 Storytime

Overview Photos: 149 Storytime



Room Notes: 149 Storytime

9/22/24 - Thermal Scan

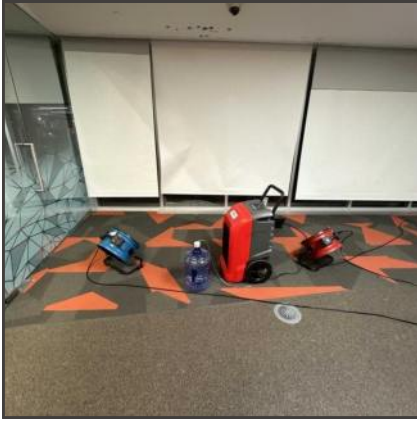


9/22/24 - Equipment

- 1 - Dehumidifier
- 2 - Axial Fans



9/22/24 - Equipment layout



9/22/24 - Humidity and Temperature Readings



9/22/24 - Anti-microbial Treatment



9/22/24 - Moisture Log

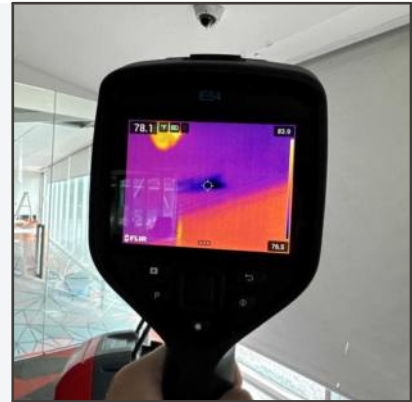
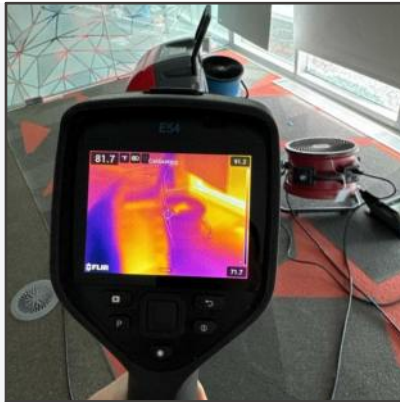
Job Name: Central Library Date: 11/22/24
 Job Address: _____ City: _____ State: _____ Zip: _____

Contact Information for Site Access:
 Name: 149 Storytime Cell: _____

Pictures must be taken of each reading. The same moisture meter should be used each day.

		RH % & Temperature						
		Day 0	Day 1	Day 2	Day 3	Day 4	Day 5	Day 6
EXTERIOR RH% AND TEMP		94.5% 61.8°						
INTERIOR RH% AND TEMP		94.1% 76.8°						
READING # / LOCATION		MOISTURE % & SURFACE TEMPERATURE						
		Day 0	Day 1	Day 2	Day 3	Day 4	Day 5	Day 6
P1		57% 73°						
P2		87% 80.7°						
P3		96% 78.9°						
P4		95.1% 84.4°						

9/24 Thermal imaging



9/24 Equipment layout



9/24 Equipment

- 1 DHU
- 2 Axial fans



9/24 Moisture log

This form needs to be filled out by the staff responsible for a space that will require de-moisture. Each room's location, height, area and square feet must be filled in. It needs to be filled out every day and put on a clipboard during work. Please take a picture of what you complete it daily to show the completion of the work.

MOISTURE MEASUREMENT LOG

Location: Central Library Date: 9/22/24

Contract Information for this space: DM Shynebooks

Please mark the status of each reading. The time required is noted for each task day.

METER TYPE	METER TYPE				
	Day 1	Day 2	Day 3	Day 4	Day 5
OUTDOOR AIR	✓	✓	✓	✓	✓
INDOOR AIR	✓	✓	✓	✓	✓
WATER VAPOR	✓	✓	✓	✓	✓
RELATIVE HUMIDITY	✓	✓	✓	✓	✓
AIR TEMPERATURE	✓	✓	✓	✓	✓

P1	METER TYPE				
	Day 1	Day 2	Day 3	Day 4	Day 5
P1	✓	✓	✓	✓	✓
P2	✓	✓	✓	✓	✓
P3	✓	✓	✓	✓	✓
P4	✓	✓	✓	✓	✓

Equipment Removed:



Main Building: 115 Staff Only

Overview Photos: 115 Staff Only

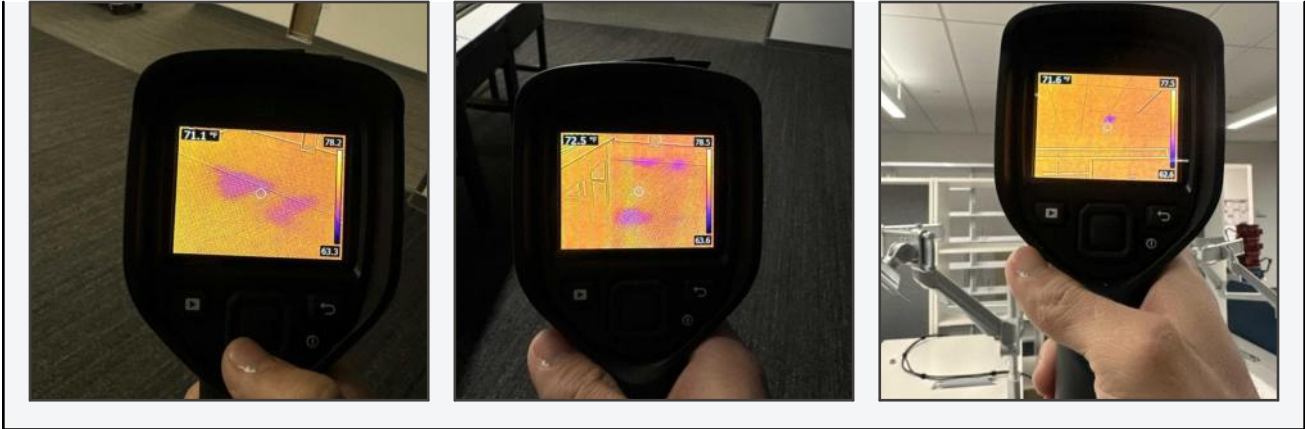


Room Notes: 115 Staff Only

9/22/24 - Humidity and Temperature Readings



9/22/24 - Thermal Scan



9/22/24 - Equipment

- 1 - Dehumidifier
- 2 - Axial Fans



9/22/24 - Equipment layout

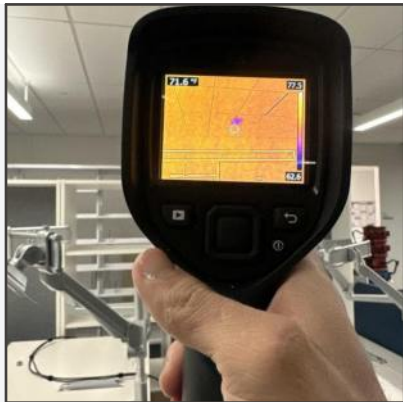


9/22/24 - Anti-microbial Treatment



9/22/24 - Wet ceiling tiles

Removed 2 wet ceiling tiles



9/22/24 - Moisture Log

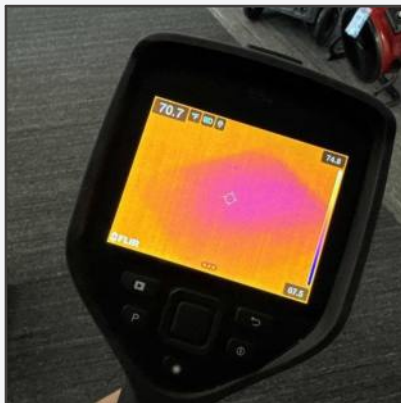
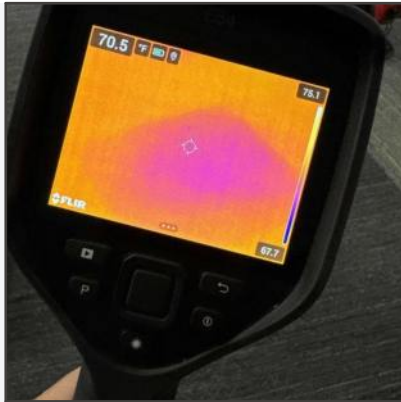
Job Name: Central Library Date: 9/22/24
 Job Address: _____ City: _____ State: _____ Zip: _____

Contact Information for Site Access:
 Name: 115 Staff Only Cell: _____

Pictures must be taken of each reading. The same moisture meter should be used each day.

		RH% & Temperature						
		Day 0	Day 1	Day 2	Day 3	Day 4	Day 5	Day 6
EXTERIOR RH% AND TEMP		71.4% 81.5°						
INTERIOR RH% AND TEMP		54.4% 74.4°						
READING # / LOCATION		MOISTURE % & SURFACE TEMPERATURE						
		Day 0	Day 1	Day 2	Day 3	Day 4	Day 5	Day 6
P1		71.5% 82.0°						
P2		76.5% 88.5°						

9/23 Thermal imaging



9/23 Equipment layout



9/23 Equipment

- 1 DHU
- 2 Axial fans



9/23 Moisture Log

CAVINS GROUP

This form needs to be filled out by the tech responding to a water loss and turned in daily with the corresponding check-out sheet and a job log. It needs to be filled out every day we are on a work order during job. Please take a picture of it when you complete it daily to use for equipment log.

MOISTURE READINGS LOG

Job No: Central Library Date: 9/23/24

Client Information for this Access: 115 Staff Only

Please mark the value of each reading. The same moisture reader should be used each day.

		DATE & TIME						
		Day 1	Day 2	Day 3	Day 4	Day 5	Day 6	Day 7
EXTERIOR HUMIDITY AND TEMP		45% 65°F	45% 65°F					
INTERIOR HUMIDITY AND TEMP		50% 68°F	50% 68°F					
RESERVED LOCATION								
		MOISTURE & SURFACE TEMPERATURE						
RESERVED LOCATION		Day 1	Day 2	Day 3	Day 4	Day 5	Day 6	Day 7
P1		81.5% 65°F	81.5% 65°F					
P2		81.5% 65°F	81.5% 65°F					

9/24 Moisture log

CAVINS GROUP

This form needs to be filled out by the tech responding to a water loss and turned in daily with the corresponding check-out sheet and a job log. It needs to be filled out every day we are on a work order during job. Please take a picture of it when you complete it daily to use for equipment log.

MOISTURE READINGS LOG

Job No: Central Library Date: 9/23/24

Client Information for this Access: 115 Staff Only

Please mark the value of each reading. The same moisture reader should be used each day.

		DATE & TIME						
		Day 1	Day 2	Day 3	Day 4	Day 5	Day 6	Day 7
EXTERIOR HUMIDITY AND TEMP		45% 65°F	45% 65°F					
INTERIOR HUMIDITY AND TEMP		50% 68°F	50% 68°F					
RESERVED LOCATION								
		MOISTURE & SURFACE TEMPERATURE						
RESERVED LOCATION		Day 1	Day 2	Day 3	Day 4	Day 5	Day 6	Day 7
P1		81.5% 65°F	81.5% 65°F					
P2		81.5% 65°F	81.5% 65°F					

9/24 Thermal imaging

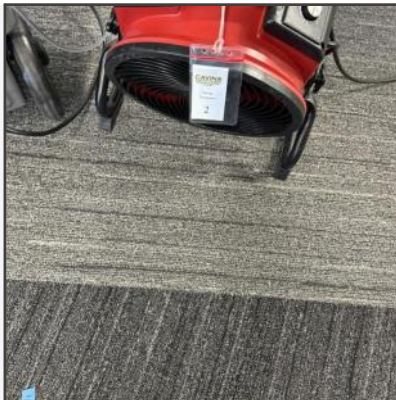


9/24 Equipment layout



9/24 Equipment

- 1 DHU
- 2 Axial fans

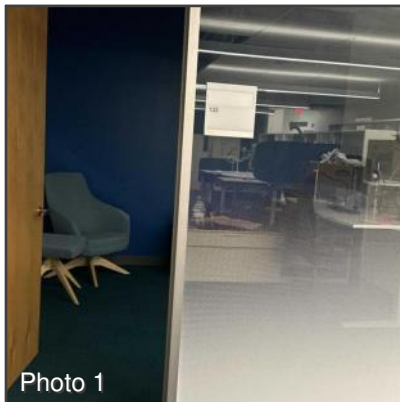


Equipment Removed lol



Main Building: 133

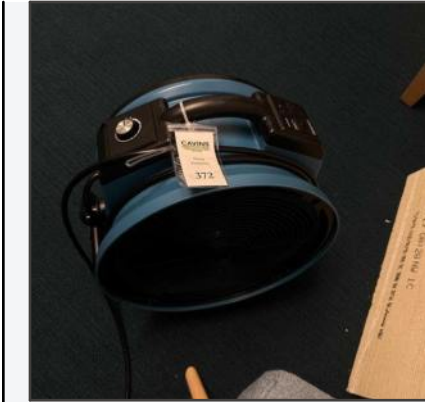
Overview Photos: 133



Room Notes: 133

9/22/24 - Equipment

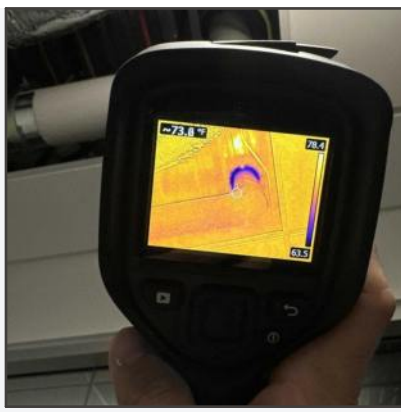
- 1 - Dehumidifier
- 2 - Axial fan



9/22/24 - Equipment layout



9/22/24 - Thermal Scan



9/22/24 - Humidity and Temperature Readings



9/22/24 - Anti-microbial Treatment



9/22/24 - Moisture Log

Job Name: Central Library Date: 9/22/24
 Job Address: City: State: Zip:
 Contact Information for Site Access: Name: 133 Cite:
 Pictures must be taken of each reading. The same moisture meter should be used each day.

		RH% & Temperature						
		Day 0	Day 1	Day 2	Day 3	Day 4	Day 5	Day 6
EXTERIOR RH% AND TEMP	51.1% / 61.8°							
INTERIOR RH% AND TEMP	41.5% / 76.8°							
READING # / LOCATION		MOISTURE % & SURFACE TEMPERATURE						
		Day 0	Day 1	Day 2	Day 3	Day 4	Day 5	Day 6
P1	73.2% / 70.8°							

9/23 Thermal imaging



9/23 Equipment Layout



9/23 Equipment

1 DHU

2 Axial fans



9/23 Moisture Log

GROUP

This form is to be filled out by the tech responsible in a matter hour and turned in daily with the moisture log. Please take a picture of it when you complete it daily or scan the original to text.

MOISTURE READINGS LOG 9/22/24

Control In Charge: [Signature]

Contact Information for Site Access: [Signature]

Please enter the value of each reading. The same location number should be used each day.

	RH% & Temperature						
	Day 0	Day 1	Day 2	Day 3	Day 4	Day 5	Day 6
EXTERIOR RH% AND TEMP	74%	74%	74%	74%	74%	74%	74%
INTERIOR RH% AND TEMP	74%	74%	74%	74%	74%	74%	74%
READING #							
LOCATION							
	P1						

9/24 Thermal imaging



9/24 Equipment

1 DHU
2 Axial fans



9/24 Equipment layout



9/24 Moisture log

CAVINS GROUP

This form needs to be filled out by the tech responsible for a water loss and placed in daily with the measurements. Check out times and a 1st report. It needs to be filled out every day for as long as equipment is being run. Please take a picture of it when you complete it daily to monitor progress to date.

MOISTURE MEASUREMENT LOG: 9/22/24

Location: Control Laboratory

Room Number: 133

Readings must be taken at each reading. The same moisture points should be read each day.

EQUIPMENT RUNS AND TEMP	Day 1				Day 2			
	10:00	11:00	12:00	13:00	10:00	11:00	12:00	13:00
RELATIVE HUMIDITY	45%	45%	45%	45%	45%	45%	45%	45%
TEMPERATURE	65°F	65°F	65°F	65°F	65°F	65°F	65°F	65°F

MOISTURE MEASUREMENT LOCATION	Day 1				Day 2			
	10:00	11:00	12:00	13:00	10:00	11:00	12:00	13:00
P1	45%	45%	45%	45%	45%	45%	45%	45%

Equipment Removed

