

**EXTERIOR SIGN DEMOLITION PLAN KEYNOTES:**

01	REMOVE EXISTING ADDRESS LETTERS FROM EXISTING BUILDING 1 DISPOSE.
02	REMOVE EXISTING "POLICE" LETTERS FROM EXISTING BUILDING 1 DISPOSE.
03	REMOVE EXISTING FREE-STANDING SIGN 1 DISPOSE.
04	REMOVE EXISTING "CITY OF NORMAN MUNICIPAL COMPLEX" LETTERS AND ADDRESS 1 DISPOSE.

**EXTERIOR SIGNAGE PACKAGE SHEET INDEX:**

D1.0	EXTERIOR SIGN DEMOLITION PLAN
A1.0	EXTERIOR SIGN PLAN
A1.1	EXTERIOR ENLARGES SIGN PLANS
A2.0	EXTERIOR SIGN TYPES
A2.1	EXTERIOR SIGN TYPES
A2.2	EXTERIOR SIGN TYPES
A3.0	EXTERIOR BUILDING SIGNS - CITY HALL
A4.0	EXTERIOR BUILDING SIGNS - POLICE DEPARTMENT

**01 EXTERIOR SIGN DEMOLITION PLAN**  
SCALE: 1/8" = 1'-0"

**THE MCKINNEY PARTNERSHIP ARCHITECTS**  
3600 West Main  
Suite 200  
Norman, Oklahoma  
73072  
405.360.1400 p  
405.364.8287 f  
tmparch.com

Seal:

Project:

**City of Norman  
Municipal Complex  
Exterior Signage Package**  
Norman, OK

Issue Date:  
09/03/24 - ISSUED FOR BIDDING

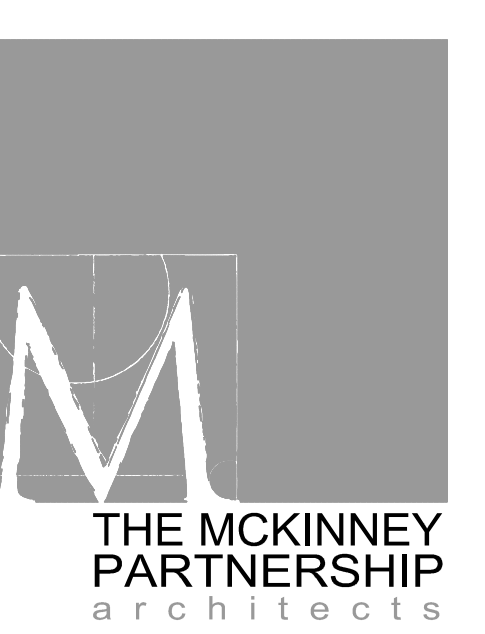
Revisions:

Project Number:  
CM095023

Sheet Title:  
**EXTERIOR SIGN DEMOLITION PLAN**

Sheet Number:  
**D1.0**





3600 West Main  
Suite 200  
Norman, Oklahoma  
73072  
405.360.1400 p  
405.364.8287 f  
tmparch.com

Seal:

Project:

**City of Norman  
Municipal Complex  
Exterior Signage Package**  
Norman, OK

Issue Date:  
09/03/24 - ISSUED FOR BIDDING

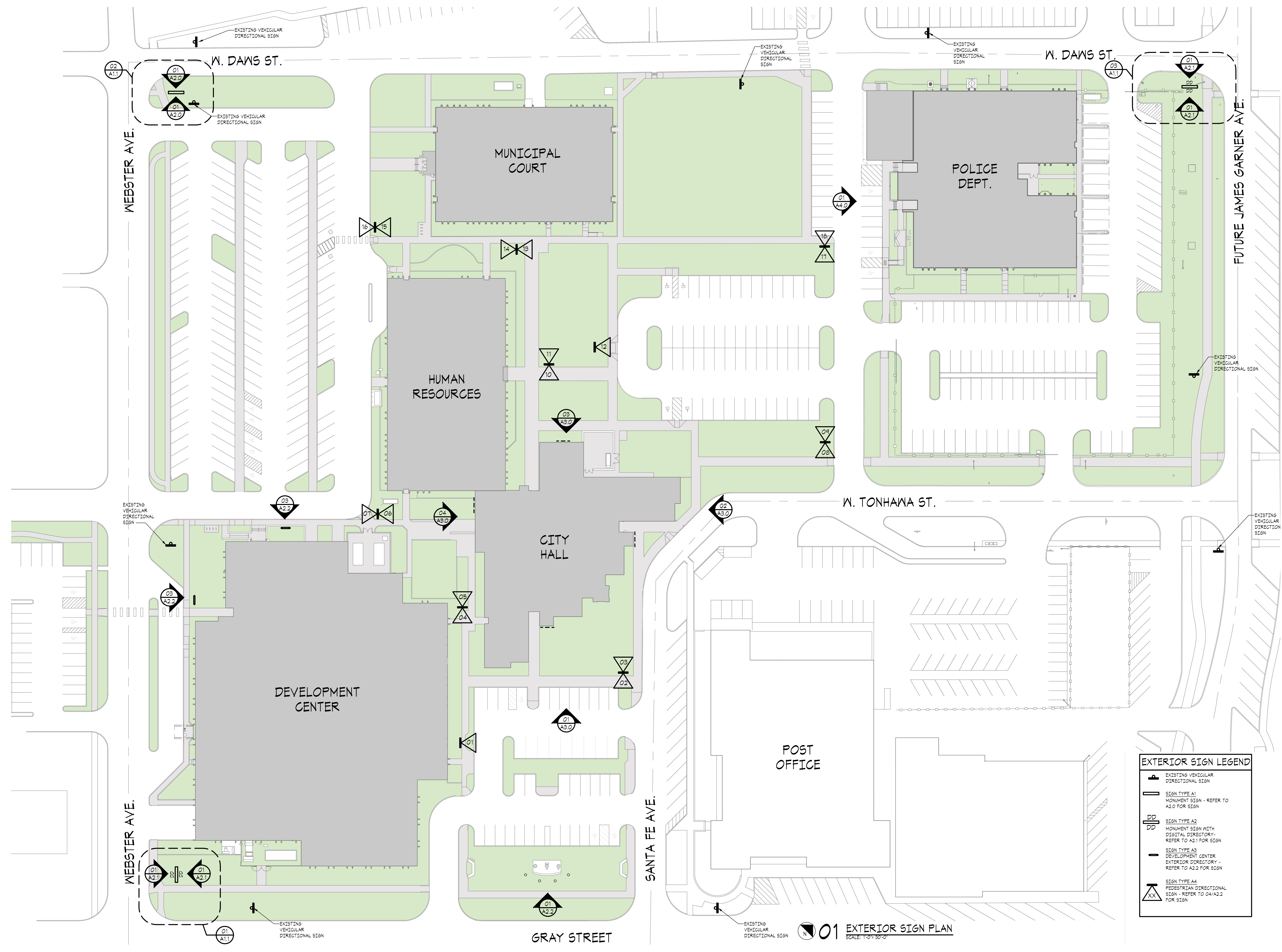
Revisions:

Project Number:  
CM095023

Sheet Title:  
**EXTERIOR SIGN PLAN**

Sheet Number:  
**A1.0**

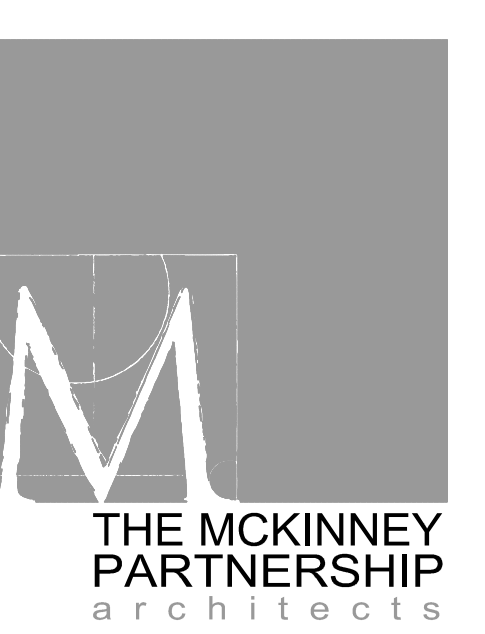
Copyright © 2008 The McKinney Partnership Architects, P.C. All Rights Reserved



EXTERIOR SIGN LEGEND	
	EXISTING VEHICULAR DIRECTIONAL SIGN
	SIGN TYPE A1 MONUMENT SIGN - REFER TO A2.0 FOR SIGN
	SIGN TYPE A2 MONUMENT SIGN WITH DIGITAL DIRECTORY - REFER TO A2.1 FOR SIGN
	SIGN TYPE A3 DEVELOPMENT CENTER EXTERIOR DIRECTORY - REFER TO A2.2 FOR SIGN
	SIGN TYPE A4 PEDESTRIAN DIRECTIONAL SIGN - REFER TO 04/A2.2 FOR SIGN

**01 EXTERIOR SIGN PLAN**  
SCALE: 1/8" = 1'-0"





THE MCKINNEY PARTNERSHIP architects

3600 West Main  
Suite 200  
Norman, Oklahoma  
73072  
405.360.1400 p  
405.364.8287 f  
tmparch.com

Seal:

Project:

City of Norman  
Municipal Complex  
Exterior Signage Package  
Norman, OK

Issue Date:  
09/03/24 - ISSUED FOR BIDDING

Revisions:

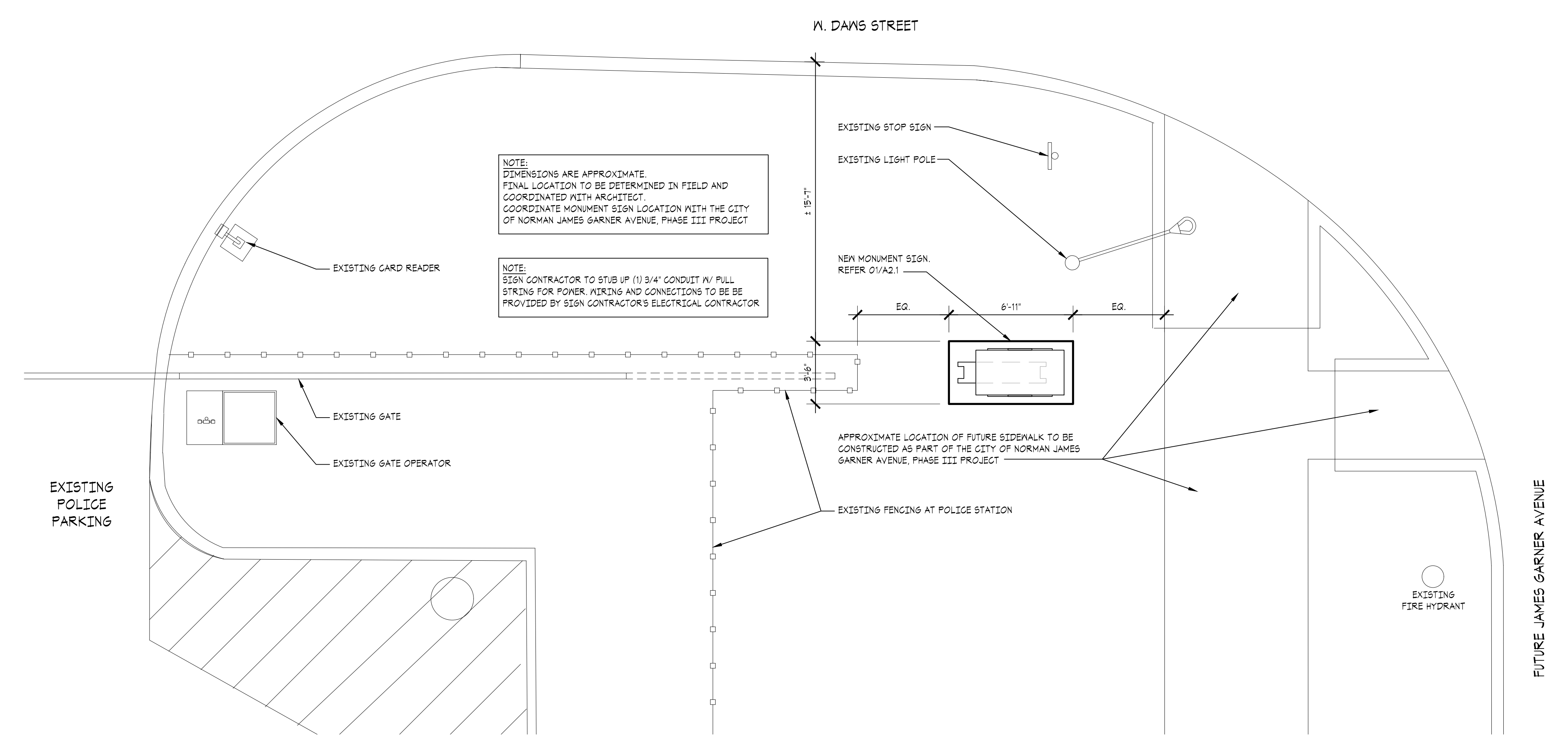
Project Number:  
CM095023

Sheet Title:  
EXTERIOR ENLARGED  
SIGN PLANS

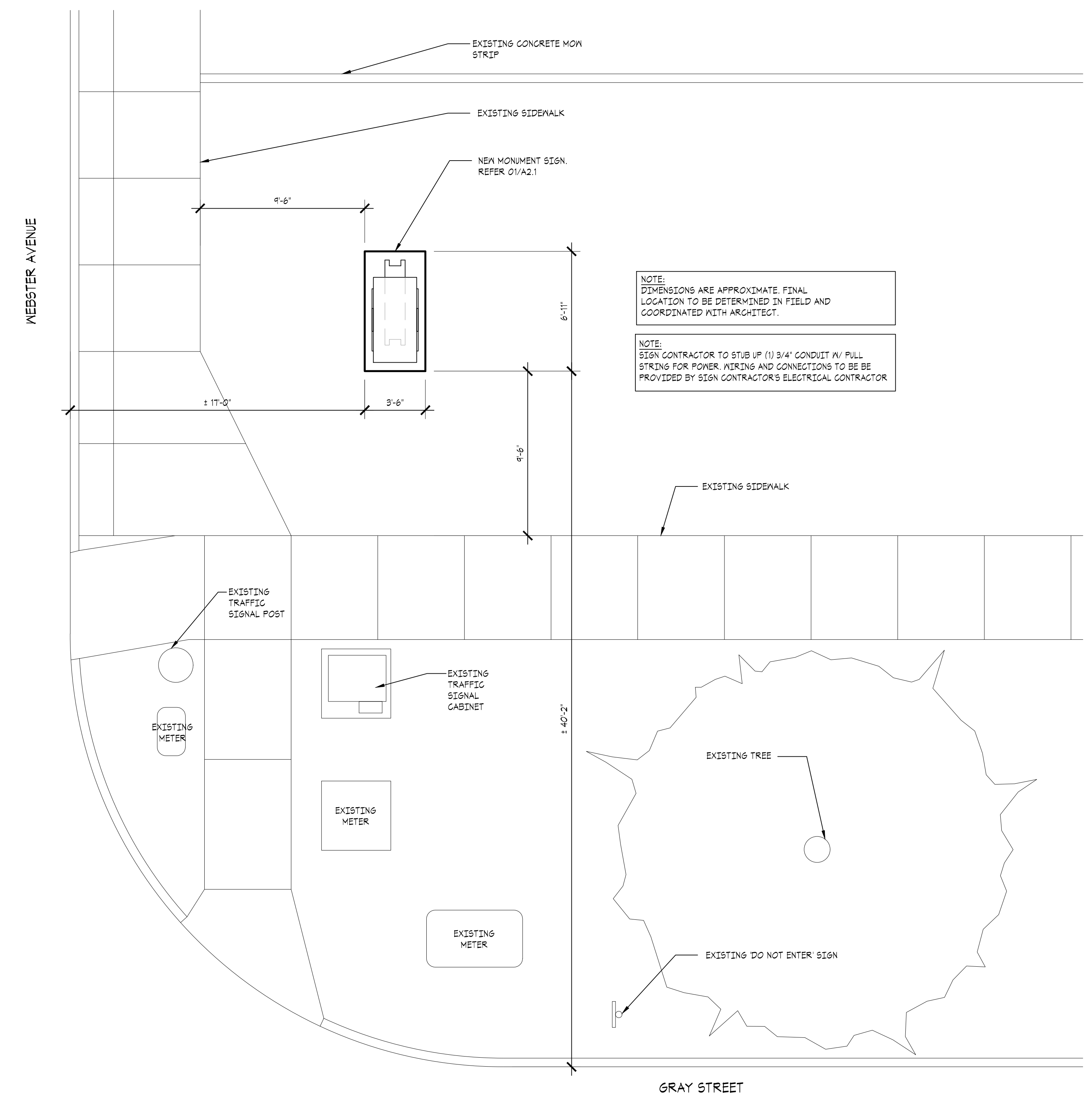
Sheet Number:

A1.1

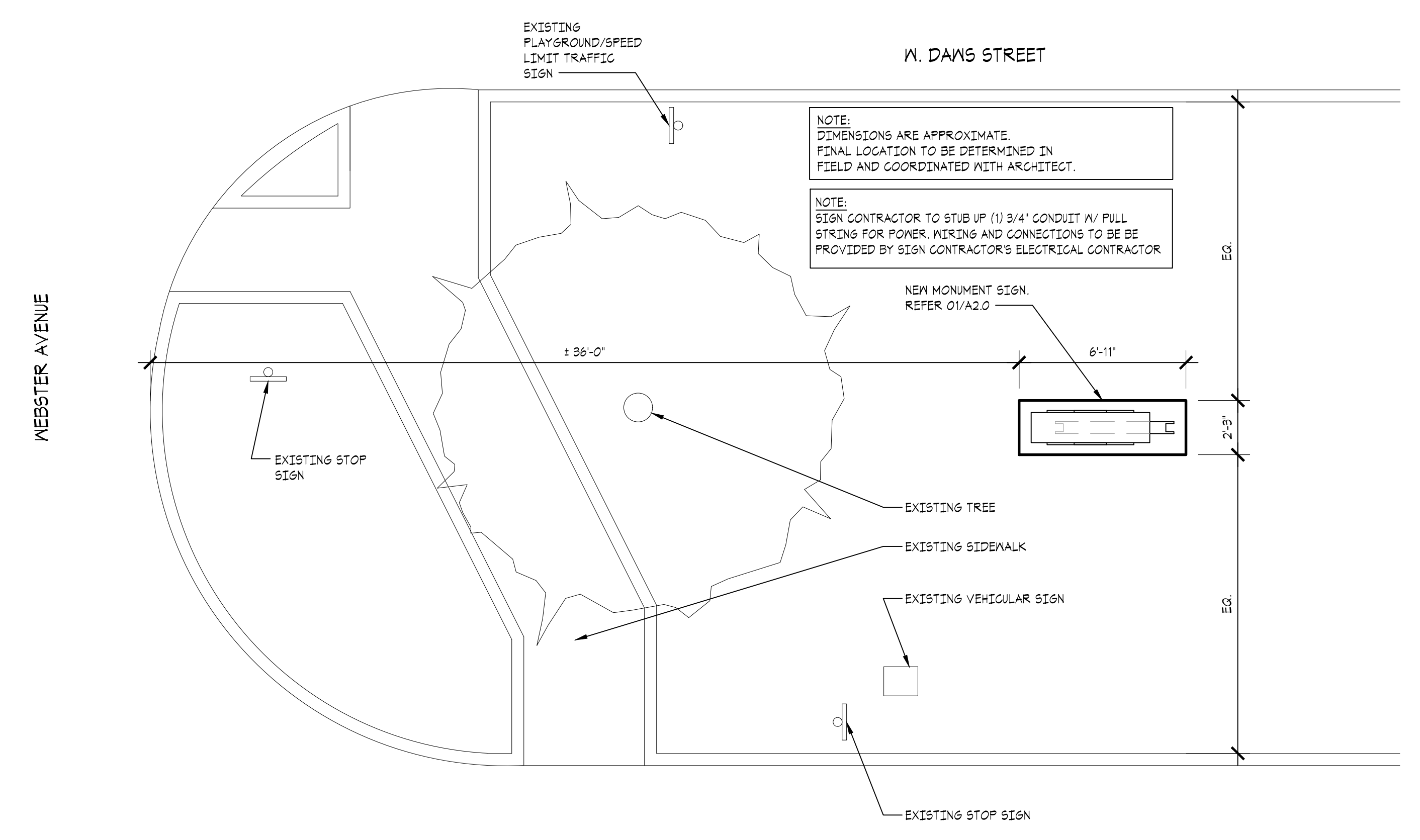
Copyright © 2008 The McKinney Partnership Architects, P.C. All Rights Reserved



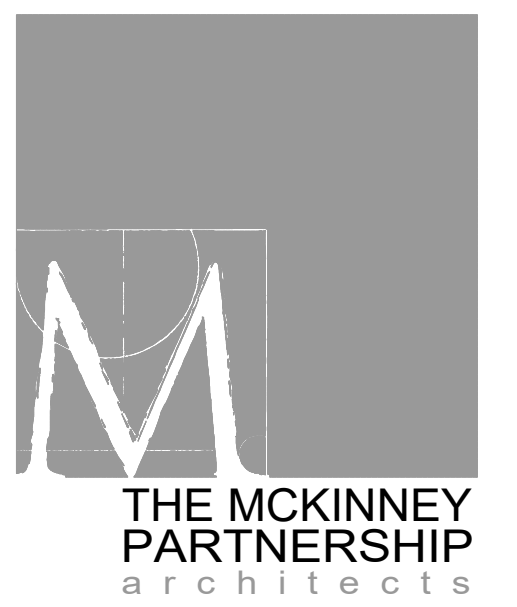
03 EXTERIOR ENLARGED SIGN PLAN  
SCALE: 1/4"=1'-0"



01 EXTERIOR ENLARGED SIGN PLAN  
SCALE: 1/4"=1'-0"



02 EXTERIOR ENLARGED SIGN PLAN  
SCALE: 1/4"=1'-0"



THE MCKINNEY PARTNERSHIP  
architects  
3600 West Main  
Suite 200  
Norman, Oklahoma  
73072  
405.360.1400 p  
405.364.8287 f  
tmparch.com

Copyright © 2008 The McKinney Partnership Architects, P.C. All Rights Reserved

Seal:

Project:

**City of Norman  
Municipal Complex  
Exterior Signage Package**  
Norman, OK

Issue Date:  
09/03/24 - ISSUED FOR BIDDING

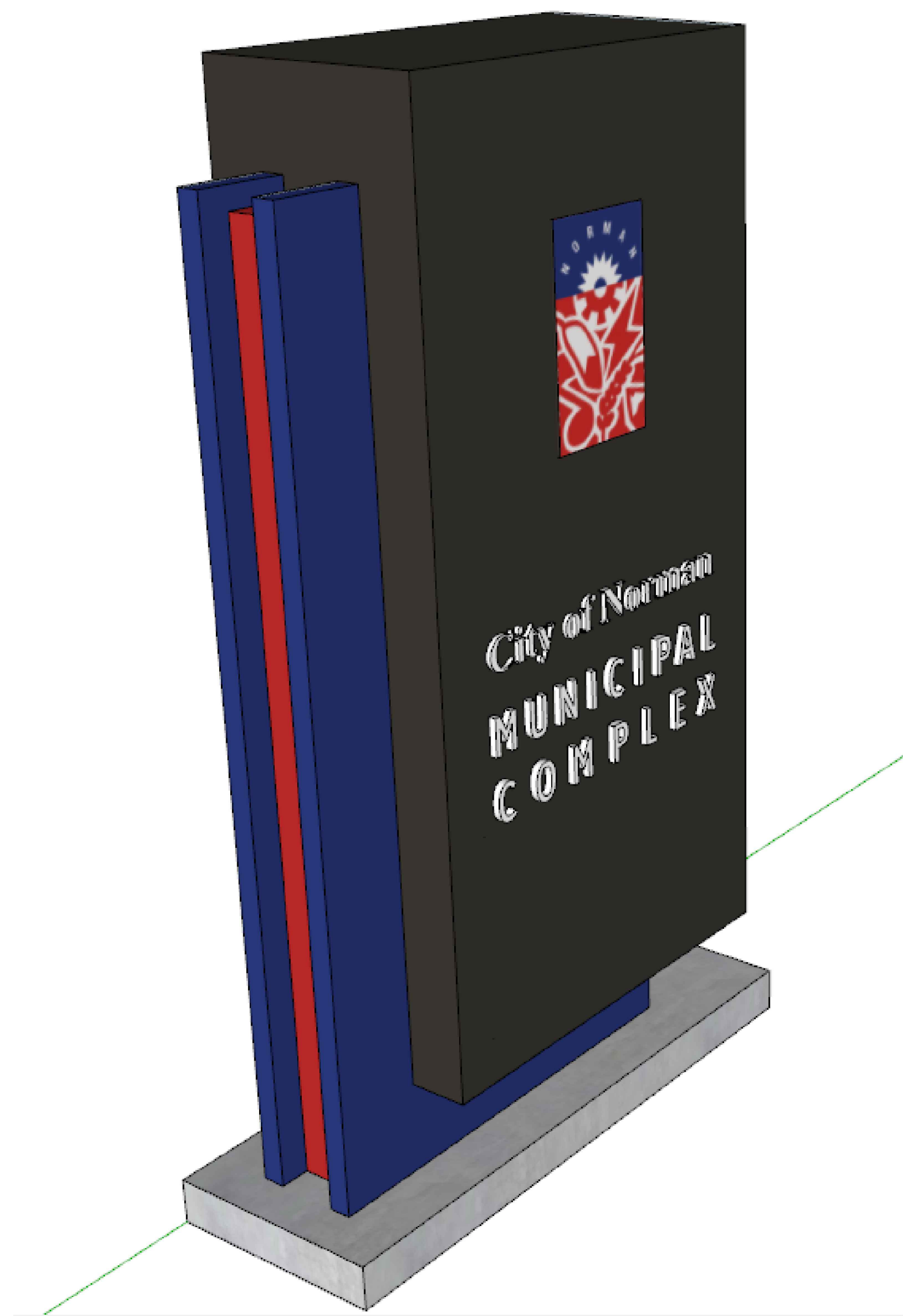
Revisions:

Project Number:  
CM095023

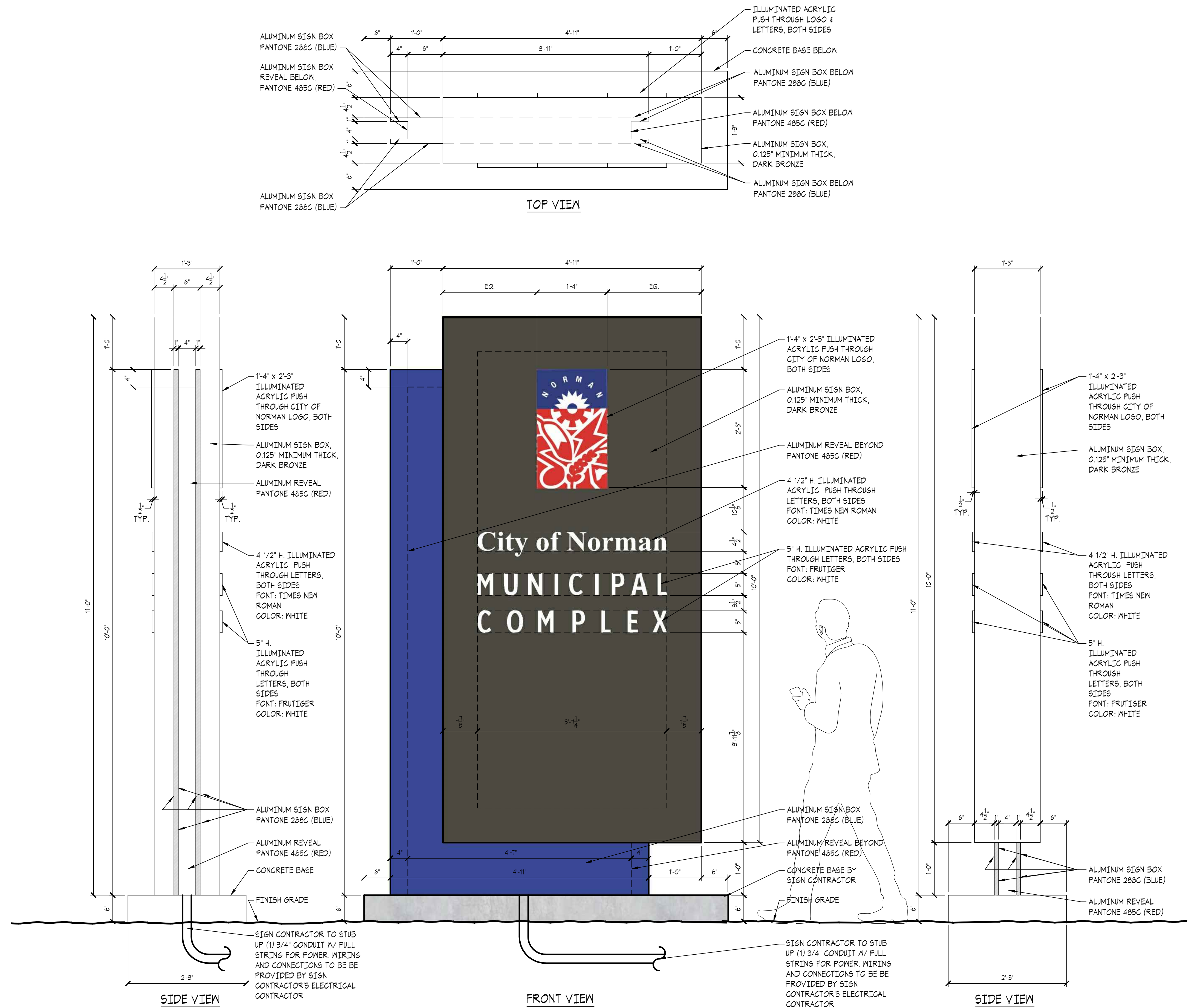
Sheet Title:  
EXTERIOR SIGN TYPES

Sheet Number:

**A2.0**



AXONOMETRIC VIEW  
NOT TO SCALE



**02 SIGN TYPE 'A1' - MONUMENT SIGN**  
SCALE: 1" = 1'-0" QTY: 1



Seal:

Project:

**City of Norman  
Municipal Complex  
Exterior Signage Package**  
Norman, OK

Issue Date:  
09/03/24 - ISSUED FOR BIDDING

Revisions:

Project Number:  
CM095023

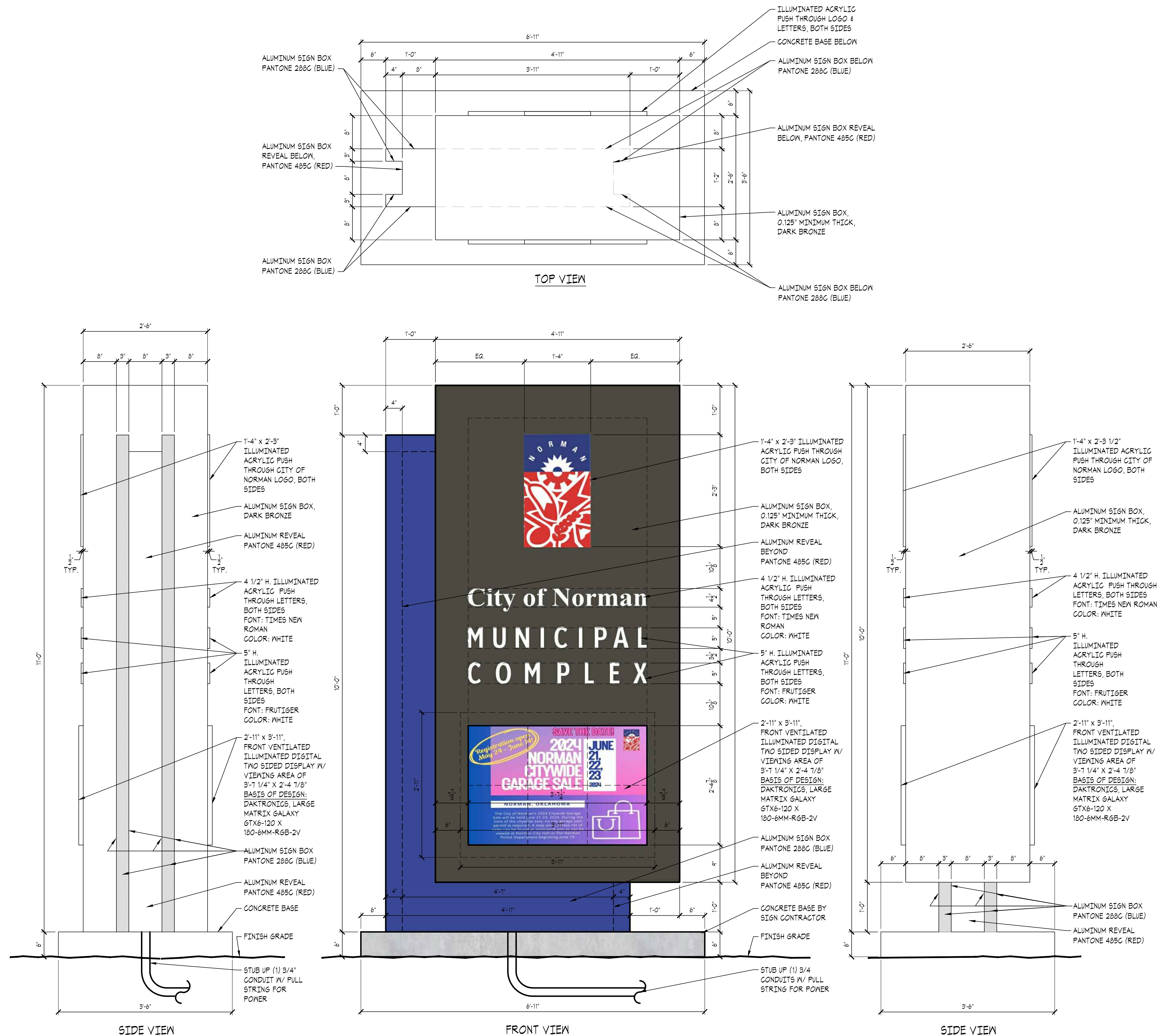
Sheet Title:  
**EXTERIOR SIGN TYPES**

Sheet Number:

**A2.1**

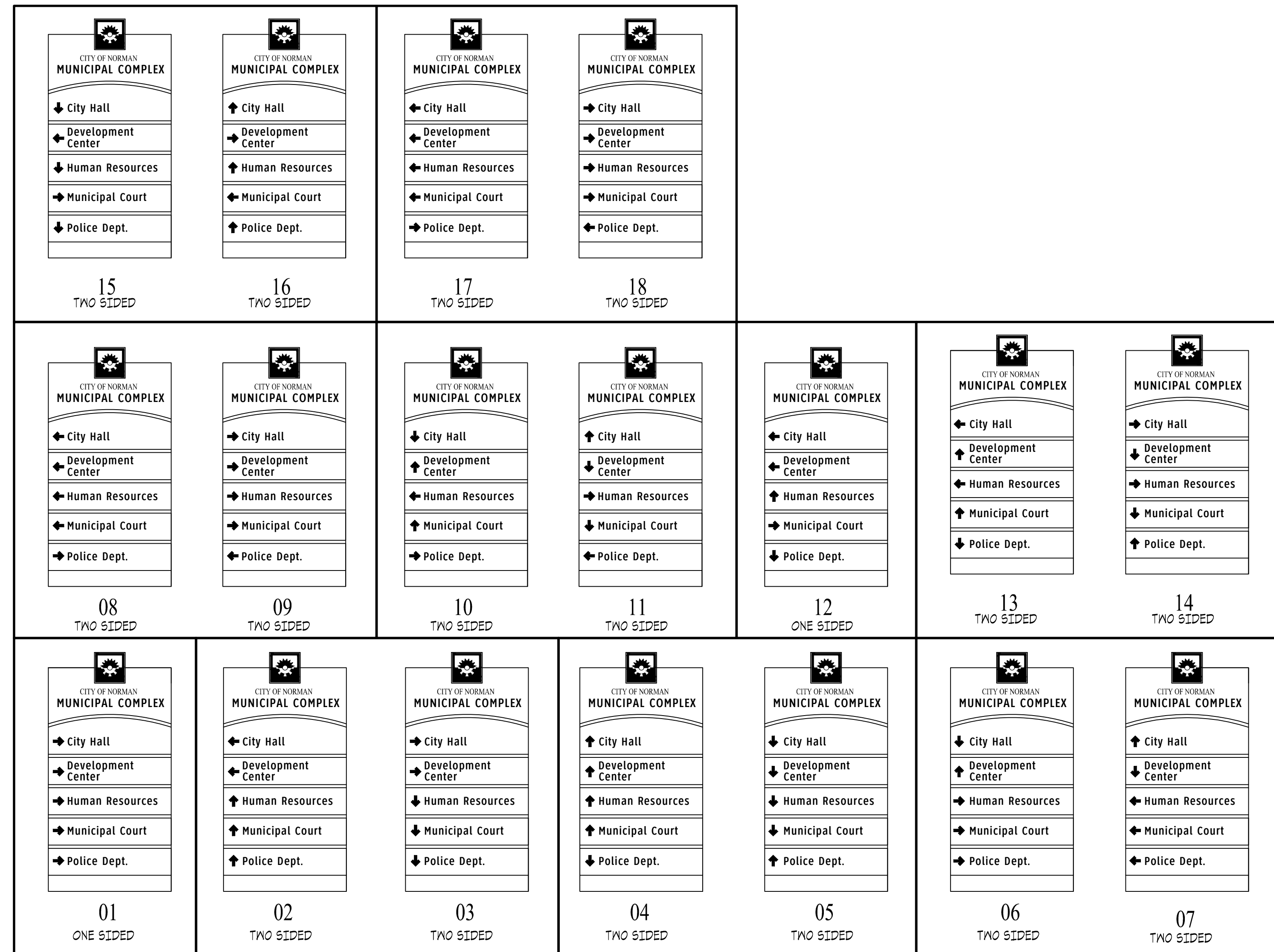


AXONOMETRIC VIEW  
NOT TO SCALE

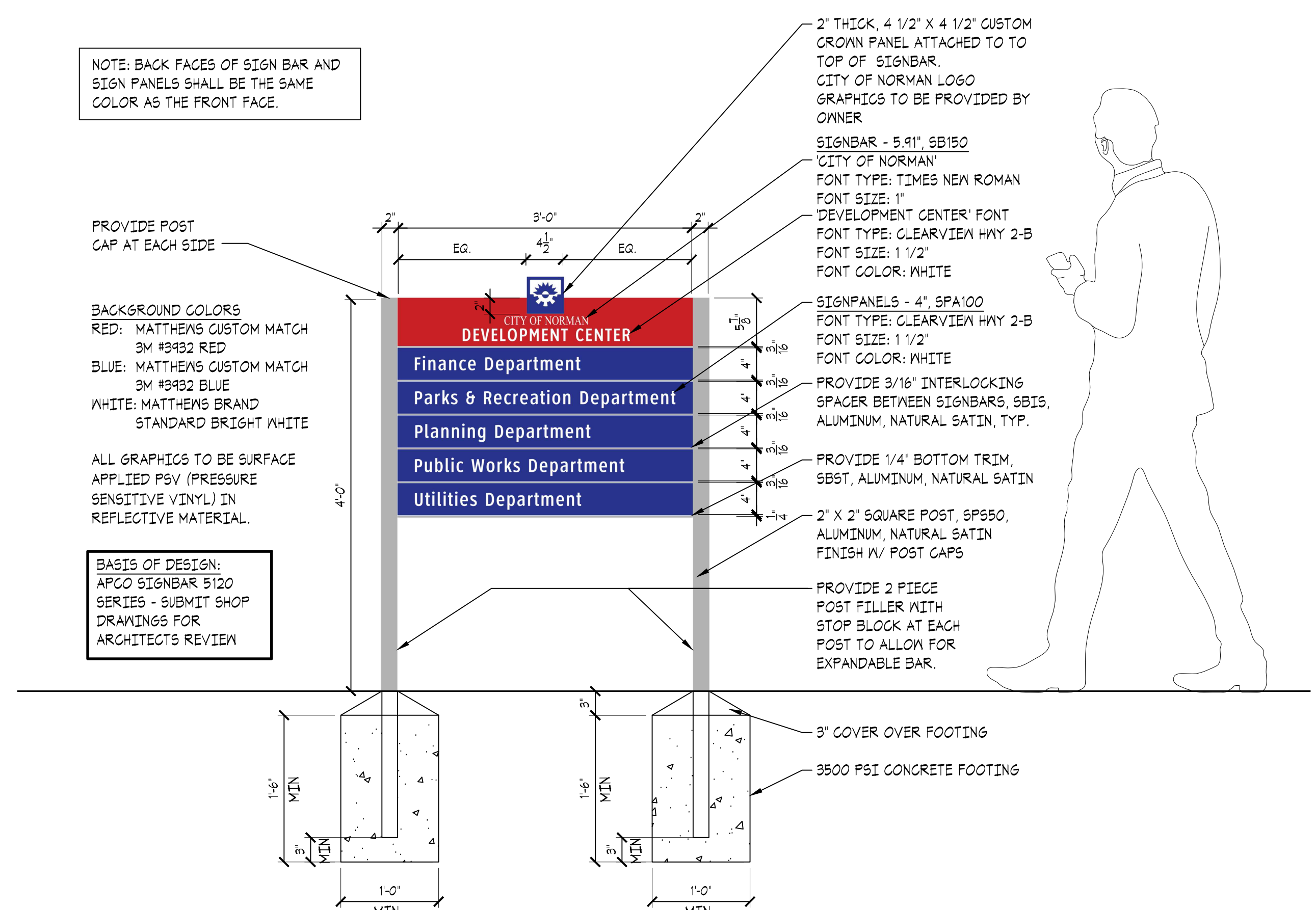


**01 SIGN TYPE 'A2' - MONUMENT SIGN W/ DIGITAL DISPLAY**  
SCALE: 1" = 1'-0" QTY: 2

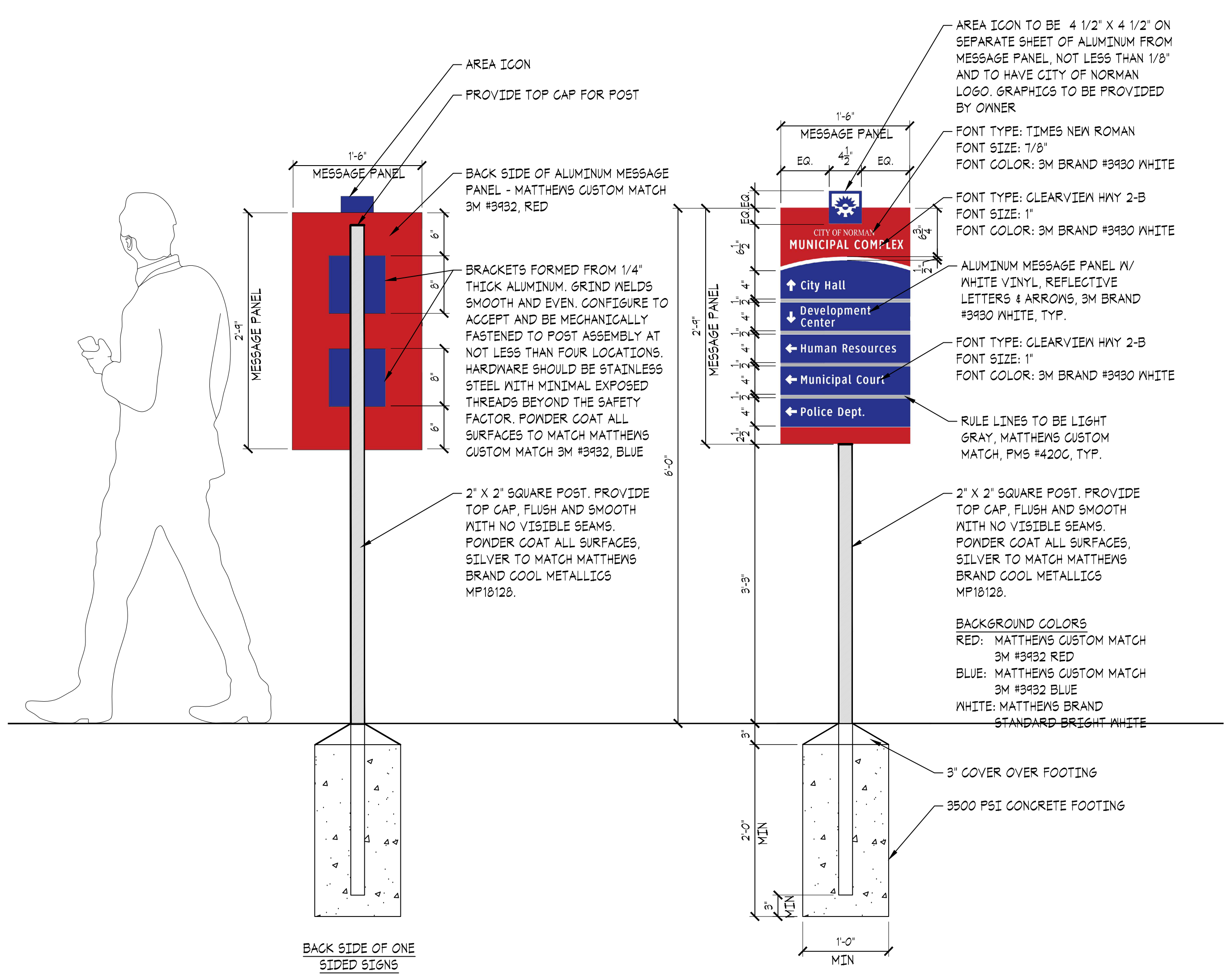




NOTE: REFER SITE PLAN ON SHEET A10 FOR LOCATIONS

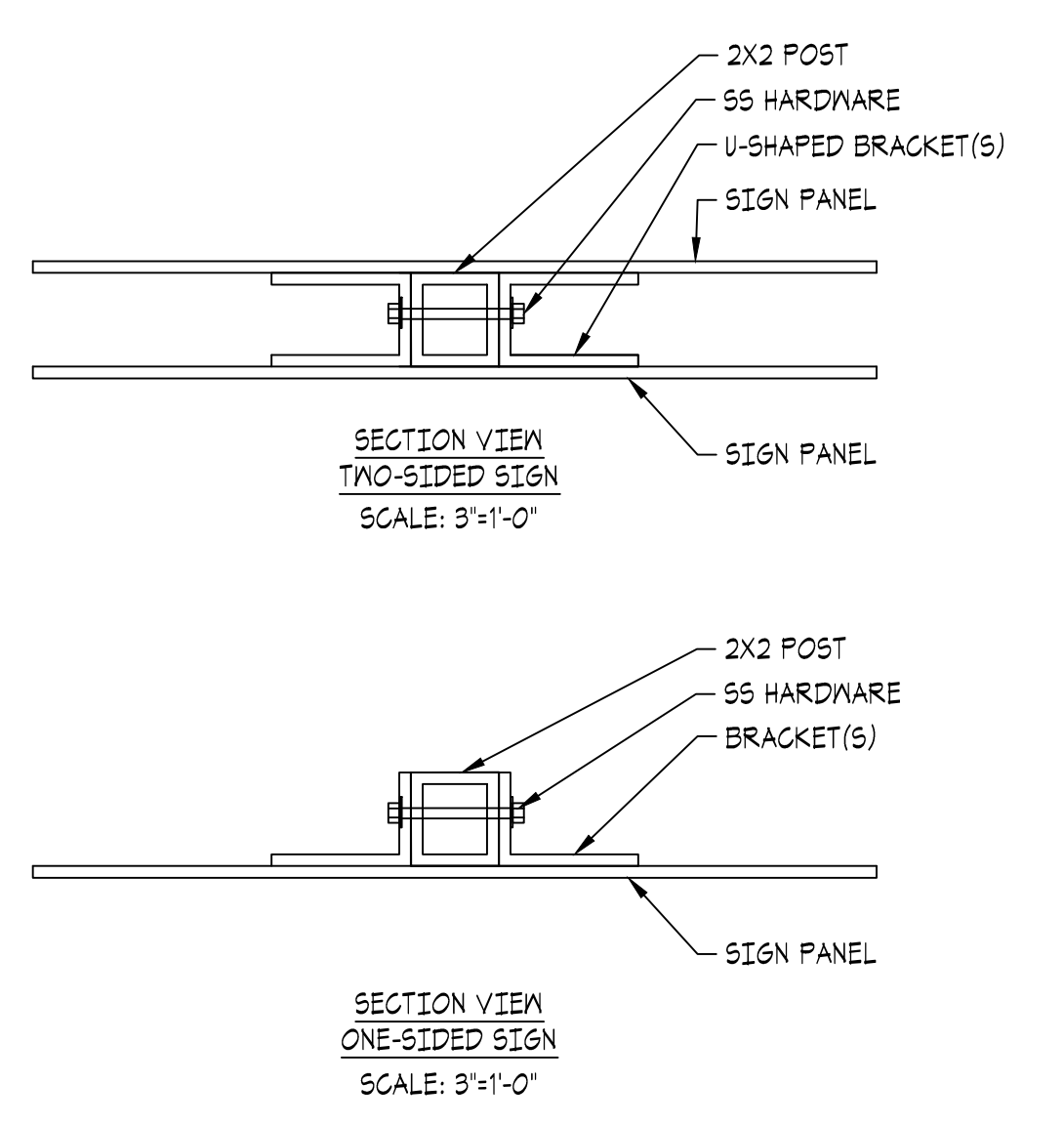


03 SIGN TYPE 'A3' - DEVELOPMENT CENTER EXTERIOR DIRECTORY  
SCALE: 1/4"=1'-0"  
QTY: 2

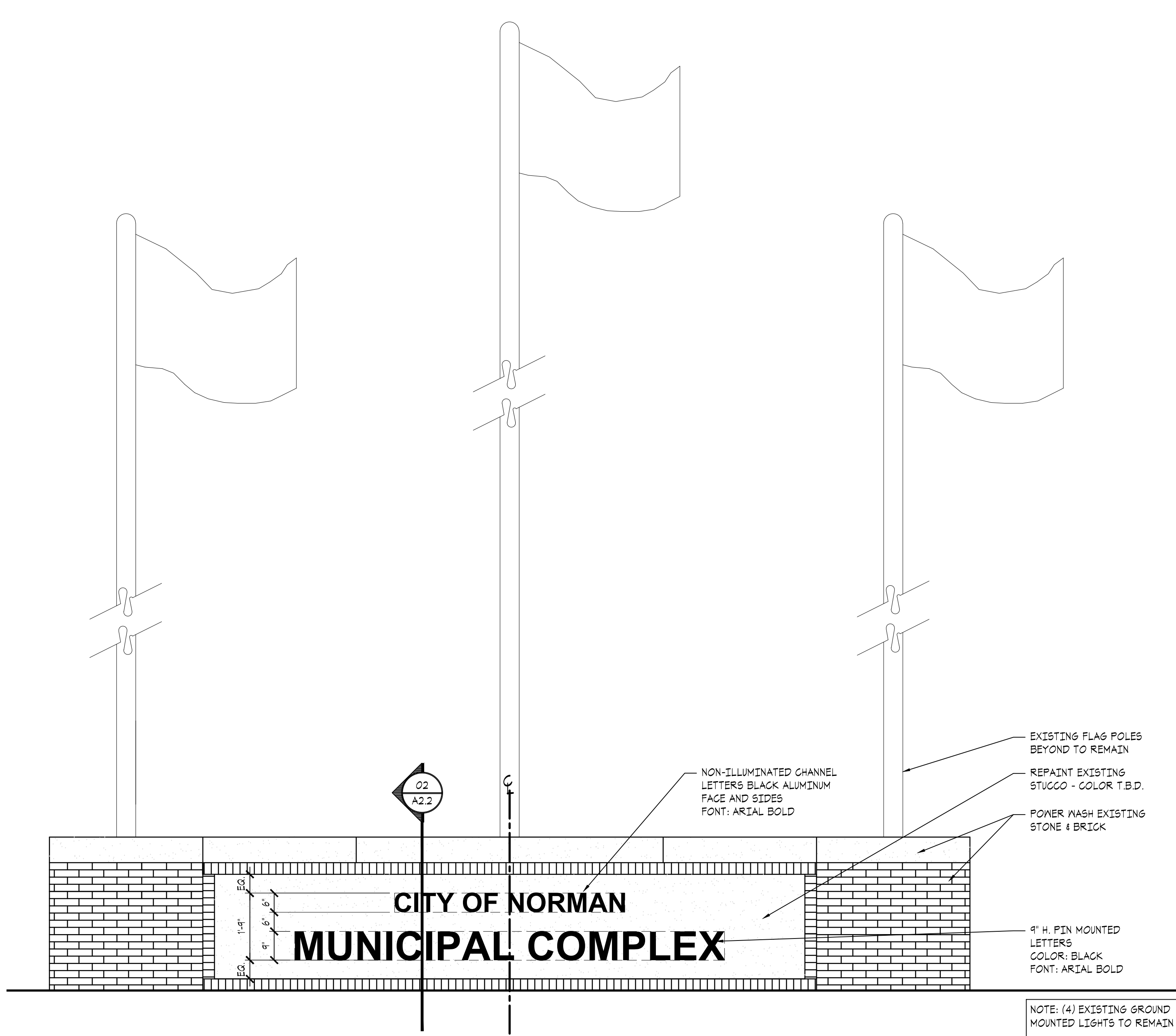


**PANEL NOTES:**  
MESSAGE PANEL & AREA ICON PANEL TO BE CONSTRUCTED OF ALUMINUM SHEETS NOT LESS THAN 1/8" THICK. THE MESSAGE PANEL AND AREA ICON SHOULD BE TWO SEPARATE SHEETS. BUFF RETURNS SMOOTH AND EVEN TO ELIMINATE TOOLING MARKS. EASE EDGES AND CORNERS (DO NOT ROUND) FOR SAFETY. AFTER BRACKETS ARE WELDED TO REVERSE OF PANEL, POWDER COAT REVERSE SURFACE AND RETURNS AS INDICATED. FOR AREA ICON, POWDER COAT ALL SURFACES. (NOTE THAT THE BRACKET AND AREA ICON HAVE MULTIPLE COLORS SO POWDER COATING WILL HAVE TO BE MULTIPLE PROCESS AS REQUIRED TO ACHIEVE DESIGN INTENT). FACE GRAPHIC ON PANEL IS 3M WHITE ENGINEERED REFLECTIVE SHEETING WITH PRINTED GRAPHICS USING UV TRANSLUCENT INKS INCORPORATED CLEAR OVERLAMINATE. APPLY REFLECTIVE SHEETING AND OVERLAMINATE TO FIRST SURFACE OF PANEL. LAMINATE AREA ICON TO FIRST SURFACE OF MESSAGE PANEL AS INDICATED WITH CHEMICAL ADHESIVE.

04 SIGN TYPE 'A4' - PEDESTRIAN DIRECTIONAL - TYPICAL  
SCALE: 1/4"=1'-0"  
QTY: 10



02 EXISTING MONUMENT SIGN - SECTION  
SCALE: 1/4"=1'-0"  
QTY: 1



01 SIGN TYPE 'A5' - EXISTING MONUMENT SIGN - ELEVATION  
SCALE: 1/2"=1'-0"  
QTY: 1

**THE MCKINNEY PARTNERSHIP**  
architects

3600 West Main  
Suite 200  
Norman, Oklahoma  
73072  
405.360.1400 p  
405.364.8287 f  
tmparch.com

---

Seal:

---

Project:

---

**City of Norman  
Municipal Complex  
Exterior Signage Package**  
Norman, OK

---

Issue Date:  
09/03/24 - ISSUED FOR BIDDING

---

Revisions:

---

Project Number:  
CM095023

---

Sheet Title:  
**EXTERIOR SIGN TYPES**

---

Sheet Number:  
**A2.2**





THE MCKINNEY PARTNERSHIP ARCHITECTS

3600 West Main  
Suite 200  
Norman, Oklahoma  
73072  
405.360.1400 p  
405.364.8287 f  
mparch.com

Copyright © 2008 The McKinney Partnership Architects, P.C. All Rights Reserved

Seal:

Project:

**City of Norman  
Municipal Complex  
Exterior Signage Package**  
Norman, OK

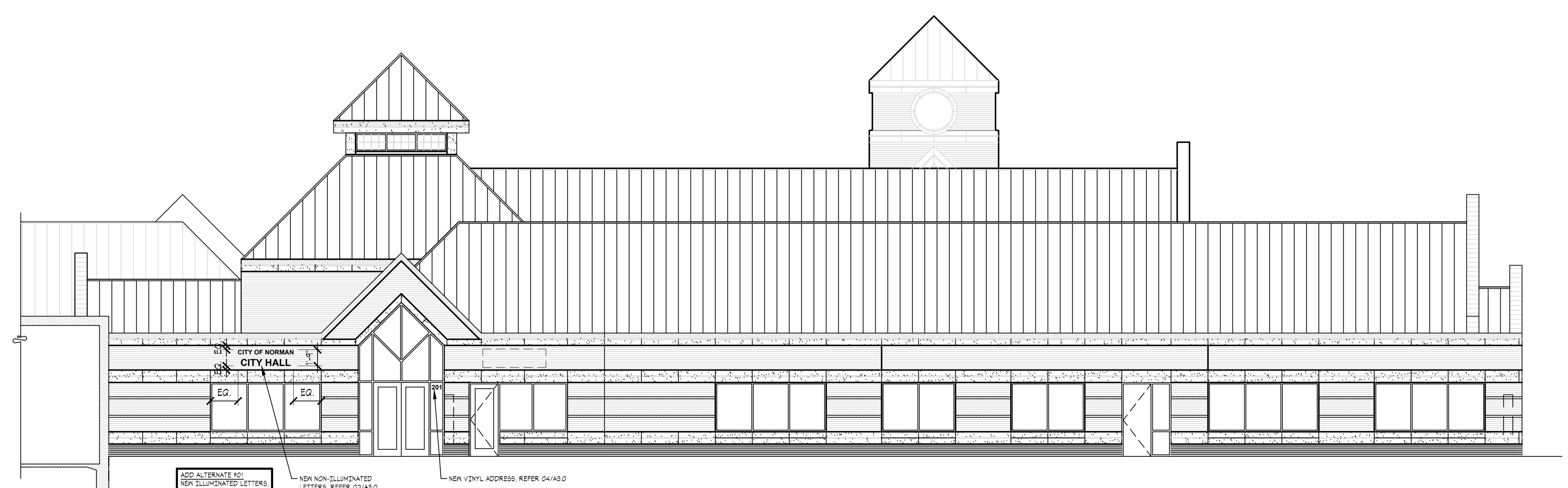
Issue Date:  
09/03/24 - ISSUED FOR BIDDING

Revisions:

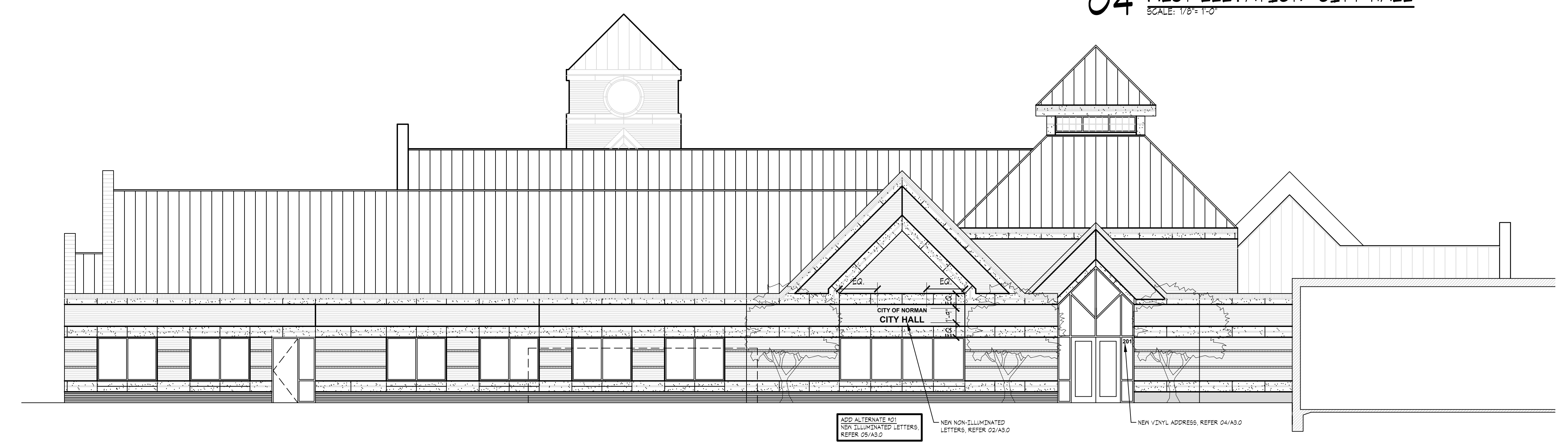
Project Number:  
CM095023

Sheet Title:  
EXTERIOR BUILDING SIGNS -  
CITY HALL

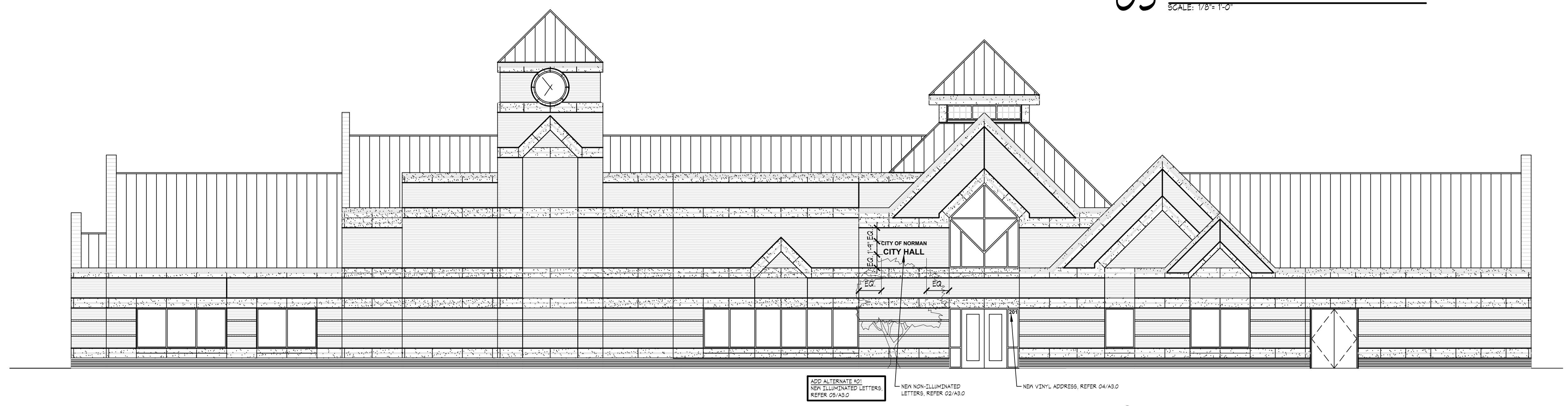
Sheet Number:  
**A3.0**



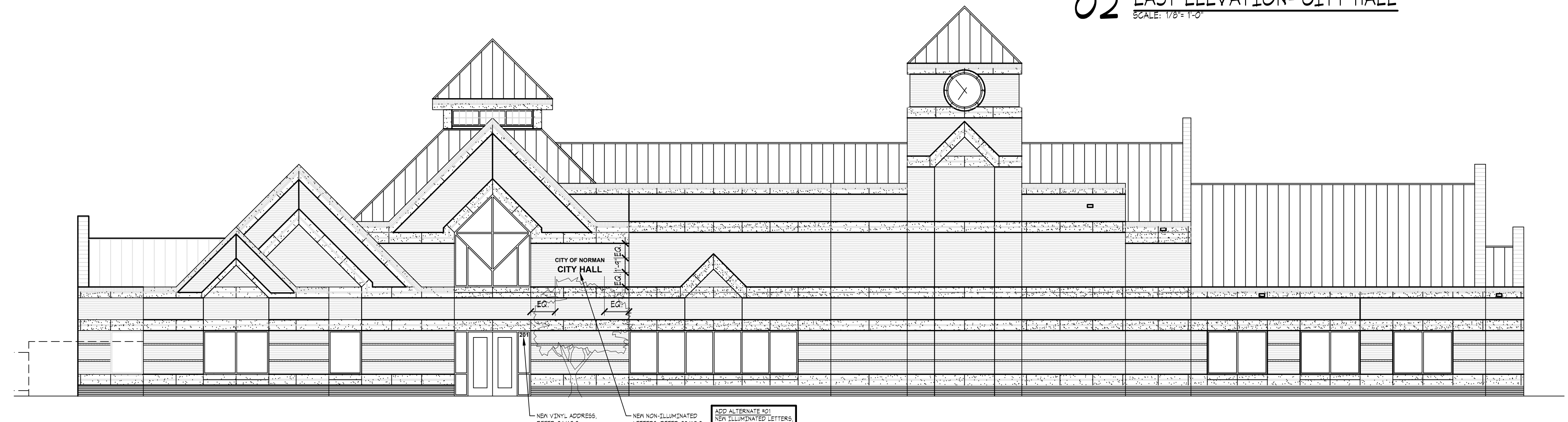
**04 WEST ELEVATION- CITY HALL**  
SCALE: 1/8" = 1'-0"



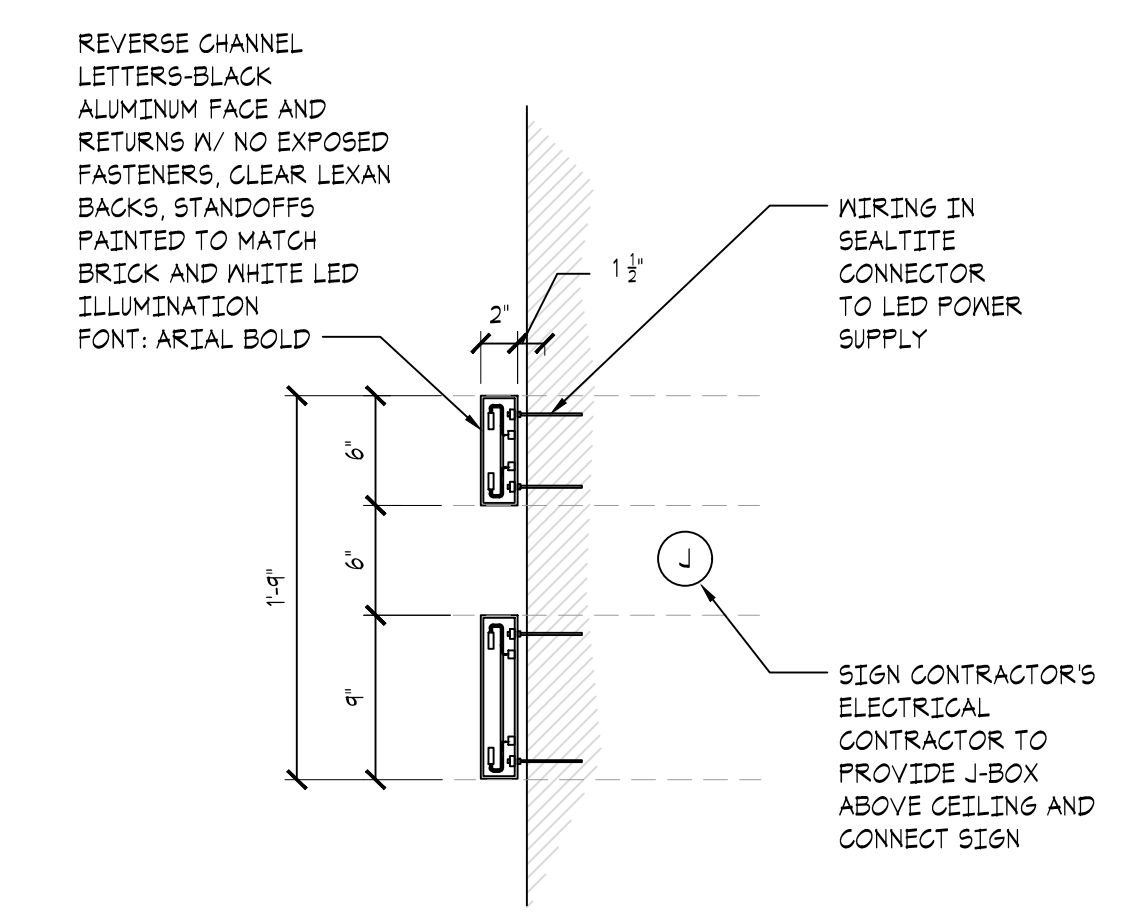
**03 NORTH ELEVATION- CITY HALL**  
SCALE: 1/8" = 1'-0"



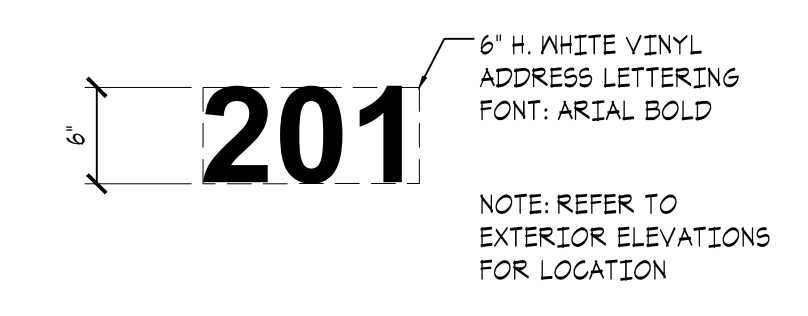
**02 EAST ELEVATION- CITY HALL**  
SCALE: 1/8" = 1'-0"



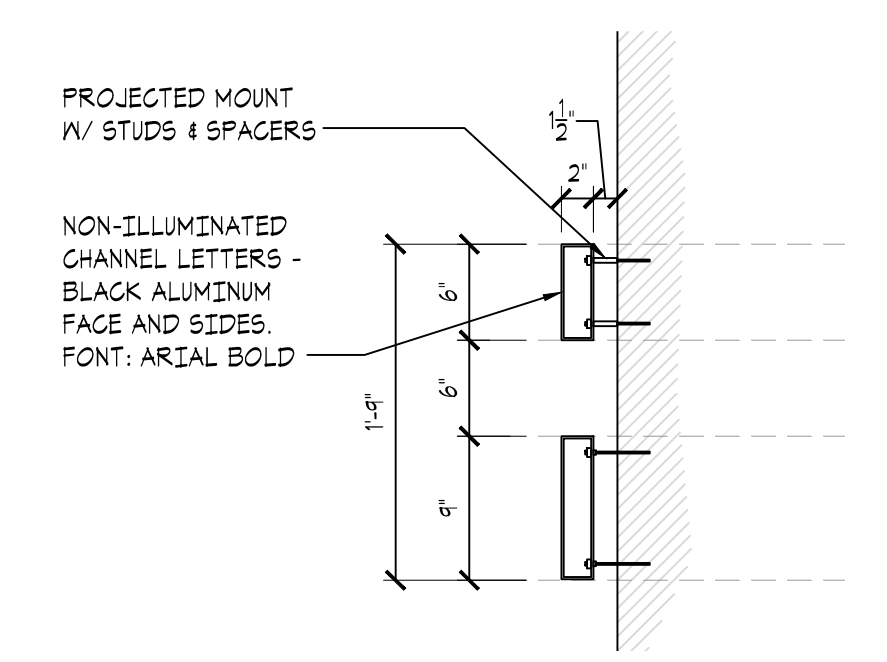
**01 SOUTH ELEVATION- CITY HALL**  
SCALE: 1/8" = 1'-0"



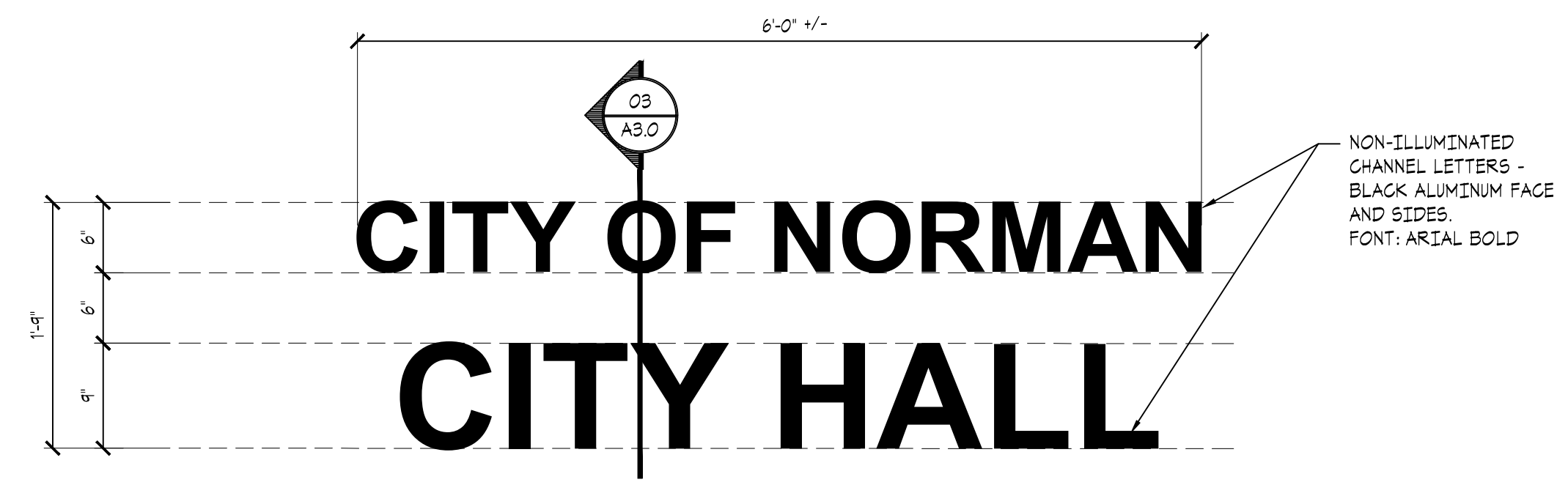
**05 SIGN TYPE 'ADD ALTERNATE #01' - SECTION - CITY HALL**  
SCALE: 1/4" = 1'-0" QTY: 4



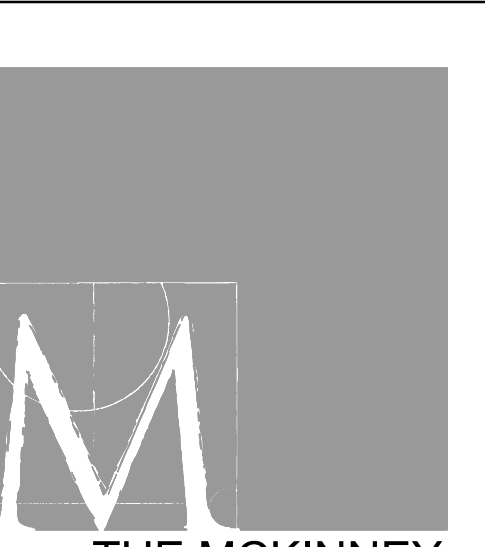
**04 SIGN TYPE 'A7' - CITY HALL**  
SCALE: 1/8" = 1'-0" QTY: 4



**03 SIGN TYPE 'A6' - SECTION - CITY HALL**  
SCALE: 1/4" = 1'-0" QTY: 4



**02 SIGN TYPE 'A6' - ELEVATION - CITY HALL**  
SCALE: 1/4" = 1'-0" QTY: 4



THE MCKINNEY PARTNERSHIP ARCHITECTS

3600 West Main  
Suite 200  
Norman, Oklahoma  
73072  
405.360.1400 p  
405.364.8287 f  
tmparch.com

Copyright © 2008 The McKinney Partnership Architects, P.C. All Rights Reserved

Seal:

Project:

**City of Norman  
Municipal Complex  
Exterior Signage Package**  
Norman, OK

Issue Date:  
09/03/24 - ISSUED FOR BIDDING

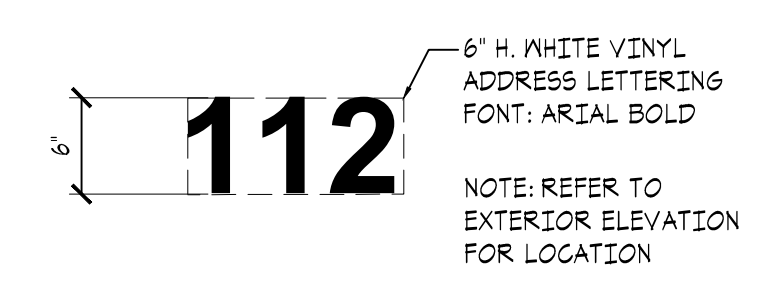
Revisions:

Project Number:  
CM095023

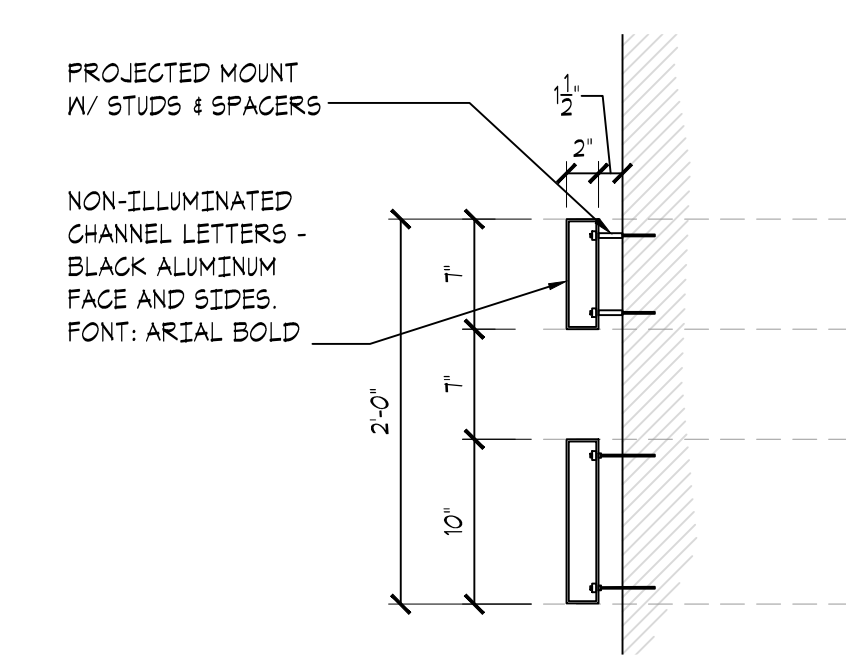
Sheet Title:  
**EXTERIOR BUILDING SIGNS -  
POLICE DEPARTMENT**

Sheet Number:

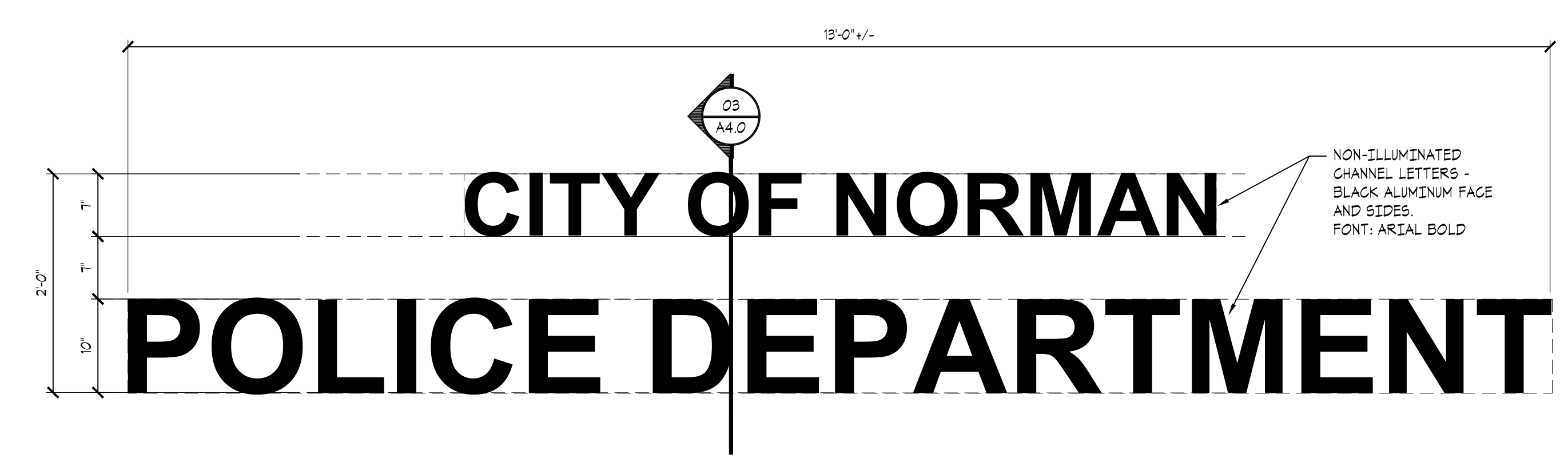
**A4.0**



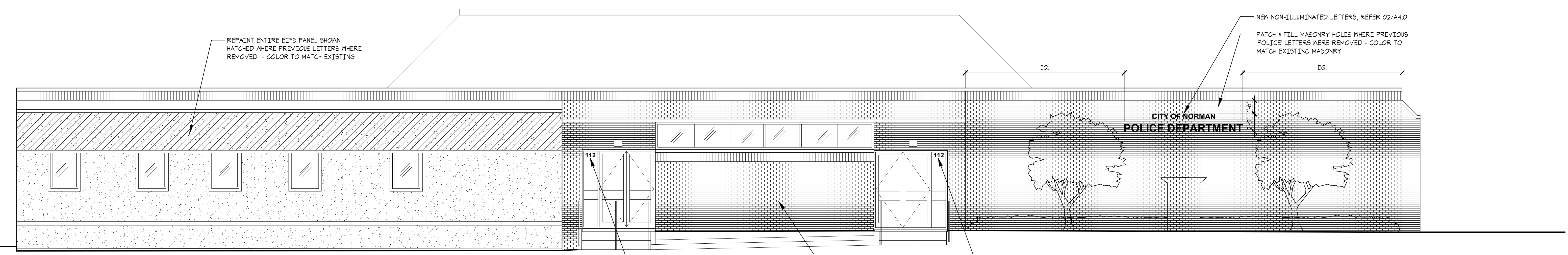
**04 SIGN TYPE 'A9' - POLICE**  
SCALE: NO SCALE QTY: 2



**03 SIGN TYPE 'A8' - SECTION - POLICE**  
SCALE: 1/4"=1'-0" QTY: 1



**02 SIGN TYPE 'A8' - ELEVATION - POLICE DEPARTMENT**  
SCALE: 1/4"=1'-0" QTY: 1



**01 WEST ELEVATION- POLICE DEPARTMENT**  
SCALE: 3/16"=1'-0"